

Converting Colors

XYZ(37.6165, 36.4607, 20.0939)

Have a look what the booklet for
XYZ(37.6165, 36.4607, 20.0939)
contains.

XYZ(37.6165, 36.4607, 20.0939)	3
<i>Conversions</i>	4
<i>Details</i>	6
<i>Harmonies</i>	12
<i>Previews</i>	24
<i>Color Blindness Simulation</i>	28
<i>CSS Examples</i>	31

Color

**XYZ(37.6165, 36.4607,
20.0939)**

Conversions

Conversions Part 1

Format	Color
Hex	C59B6F
RGB	197, 155, 111
RGB Percent	77%, 61%, 44%
CMY	0.2275, 0.3921, 0.5647
CMYK	0.00, 0.21, 0.44, 0.23
HSL	31°, 43%, 60%
HSV	31°, 44%, 77%
XYZ	37.6165, 36.4607, 20.0939
YIQ	162.5420, 39.1560, -4.7800

Conversions

Conversions Part 2

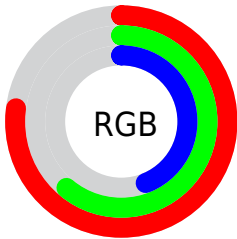
Format	Color
RYB	193, 197, 111
Decimal	12950383
CIELab	66.87, 9.90, 29.01
CIELCh	67, 30.655, 71.161
Yxy	36.4607, 0.3994, 0.3872
Android (android.graphics.Color)	4291140463 (0xFFC59B6F)
YUV	162.5420, -25.4102, 30.2197
Hunter-Lab	60.3827, 5.5301, 22.5376

Details

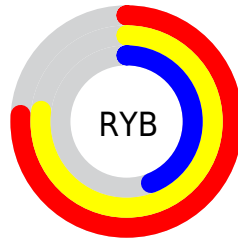
The XYZ color **37.6165, 36.4607, 20.0939** is a light color, and the websafe version is hex **CC9966**. A complement of this color would be **28.0243, 30.1919, 57.1737**, and the grayscale version is **34.7006, 36.5078, 39.7570**.

A 20% lighter version of the original color is **70.6513, 69.5053, 44.3425**, and **16.8043, 15.9111, 6.7429** is the 20% darker color. If you saturate the color by 10%, you get **35.1116, 32.9996, 14.4848**, and if you desaturate by 10%, it is **40.4900, 40.2761, 27.0068**.

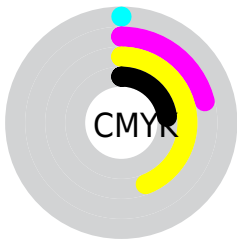
Distribution



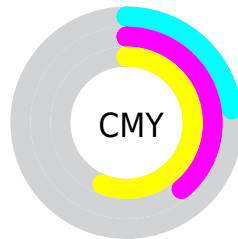
- Red (77%)
- Green (61%)
- Blue (44%)



- Red (76%)
- Yellow (77%)
- Blue (44%)



- Cyan (0%)
- Magenta (21%)
- Yellow (44%)
- Black (23%)



- Cyan (23%)
- Magenta (39%)
- Yellow (56%)

Brightness & Saturation Gradients

These gradients show how the XYZ color 37.6165, 36.4607, 20.0939 changes by changing the brightness by 10 percent. The first figure shows a shift by +10% for each color and the second figure -10%.

Similar to the brightness gradients but the following saturation gradients show a change of the XYZ color 37.6165, 36.4607, 20.0939 by changing the saturation by 10% instead.

■ 37.6165, 36.4607,
20.0939

■ 37.6165, 36.4607,
20.0939

327.2814,
330.9697, 265.0440

■ 25.8610, 24.7902,
12.2786

■ 70.8276, 69.7426,
44.4356

■ 16.8518, 15.9208,
6.8088

■ 93.0140, 92.1227,
61.7990

■ 10.2236, 9.4681,
3.2662

■ 119.4081,
118.8415, 83.1823

■ 5.6108, 5.0478,
1.2321

■ 150.3753,
150.2835, 109.0038

■ 2.6483, 2.2753,
0.0052

186.2808,
186.8328, 139.6822

■ 0.9706, 0.7606,
0.0000

227.4901,

■ 0.0000, 0.0000,

228.8741, 175.6360

0.0000

274.3685,
276.7916, 217.2838

■ 37.6165, 36.4607,
20.0939

■ 37.6165, 36.4607,
20.0939

■ 35.1116, 32.9996,
14.4848

■ 40.4900, 40.2761,
27.0068

■ 32.9538, 29.8753,
10.0926

■ 43.7467, 44.4521,
35.2983

■ 31.1230, 27.0763,
6.8231

■ 47.4036, 49.0012,
45.0402

■ 29.5955, 24.5880,
4.5670

■ 51.4757, 53.9338,
56.2986

■ 28.3433, 22.3939,
3.1927

■ 55.9773, 59.2598,
69.1354

■ 27.6603, 21.1391,
2.6224

■ 60.9218, 64.9885,
83.6092

■ 66.3221, 71.1292,
99.7755

■ 69.9223, 76.7832,
105.7431

■ 72.7042, 82.3470,
106.6704

Harmonies

Analogous

The Analogous color harmony consists of three colors that are next to each other on the color wheel.



41.8155, 36.4607, 25.1444



37.6165, 36.4607, 20.0939



32.9563, 36.4607, 19.5367

Triad

The Triadic color harmony groups three colors that are evenly spaced from another and form a triangle on the color wheel.



37.6165, 36.4607, 20.0939



26.6176, 36.4607, 44.8539



40.8652, 36.4607, 62.2121

Complementary

The Complementary color scheme is a pair of colors which are on the opposite of each other on the color wheel.



37.6165, 36.4607, 20.0939



28.0243, 30.1919, 57.1737

Split Complementary

Split-complementary colors differ from the complementary color scheme. The scheme consists of three colors, the original color and two neighbors of the complement color.



36.4107, 36.4607, 70.4164



37.6165, 36.4607, 20.0939



28.3622, 36.4607, 59.0045

Square

The Square scheme is like the rectangle color scheme, but the four colors are evenly spaced on the color wheel.



37.6165, 36.4607, 20.0939



26.8778, 36.4607, 32.0067



31.8528, 36.4607, 69.1266



43.8036, 36.4607, 48.5357

Rectangle

The Rectangle color scheme consists of four colors that form a rectangle on the color wheel.



37.6165, 36.4607, 20.0939



30.2400, 36.4607, 21.6023



31.8528, 36.4607, 69.1266



39.4797, 36.4607, 65.8257

Sweetspot

The Sweet Spot groups the original color and five complimentary colors.



37.6174, 36.4624, 20.0946



85.2163, 88.1490, 81.5250



34.5432, 25.5726, 33.6874



17.9104, 18.4626, 16.5572



0.0000, 0.0000, 0.0000



20.3446, 21.4041, 23.3091

Same Dimension

The Same Dimension uses a secret algorithm to generate beautiful new colors.



37.6174, 36.4624, 20.0946



63.2452, 59.6100, 26.7151



45.8614, 52.9503, 22.8426



11.0751, 11.5193, 11.2025



18.2774, 14.0720, 1.7528



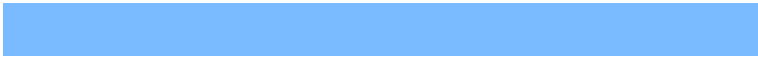
0.9378, 0.8110, 0.1071

Inverse Universe

The Inverse Universe completely reimagines the original color for something new.



28.0243, 30.1919, 57.1737



43.9351, 46.9915, 101.3624



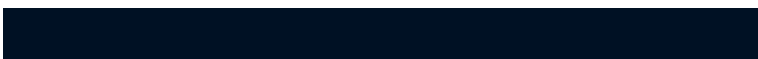
22.3183, 18.7800, 55.2717



10.4771, 11.1282, 13.5133



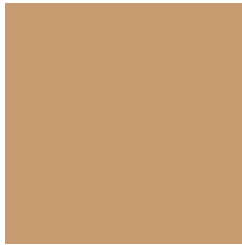
9.4751, 8.3440, 35.8555



0.5211, 0.5400, 1.7219

Previews

White Background



This preview shows how the XYZ color 37.6165, 36.4607, 20.0939 looks on a white background.

Color Contrast Check

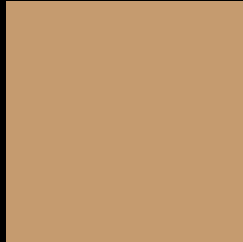
Large Text (above 18pt) WCAG AA × Fail

Any Text WCAG AA × Fail

Large Text (above 18pt) WCAG AAA × Fail

Any Text WCAG AAA × Fail

Black Background



This preview shows how the XYZ color 37.6165, 36.4607, 20.0939 looks on a black background.

Color Contrast Check

Large Text (above 18pt) WCAG AA ✓ Pass

Any Text WCAG AA ✓ Pass

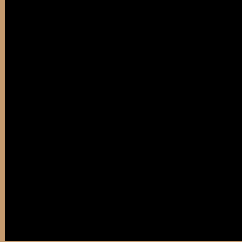
Large Text (above 18pt) WCAG AAA ✓ Pass

Any Text WCAG AAA ✓ Pass

If you want to check with other color combinations, try the [Color Contrast Checker](#).

XYZ 37.6165, 36.4607, 20.0939

Background



This preview shows how black text looks on a background with the XYZ color 37.6165, 36.4607, 20.0939.



This preview shows how white text looks on a background with the XYZ color 37.6165, 36.4607,

Color Blindness Simulation

Color vision deficiency is a very complex topic, and I could not describe the different causes any better than Wikipedia does, so if you want to learn more, you should check out their [article about color blindness](#).

Dichromacy



Original Color

37.6165, 36.4607, 20.0939

Protanopia

34.0390, 36.6394, 21.1977

Deuteranopia

37.2634, 36.5267, 20.1253



Tritanopia

41.4497, 36.5895, 38.1355

Trichromacy



Original Color

37.6165, 36.4607, 20.0939

Protanomaly

35.3186, 36.5242, 20.8112

Deuteranomaly

37.5227, 36.6604, 20.1374

Tritanomaly

39.7685, 36.3656, 30.5144

Monochromacy



Original Color

37.6165, 36.4607, 20.0939

Achromatopsia

34.8123, 36.6253, 39.8849

Achromatomaly

35.2840, 36.2692, 31.5265

CSS Examples

Text

The CSS property to change the color of the text to XYZ 37.6165, 36.4607, 20.0939 is called "color". The color property can be set on classes, ids or directly on the HTML element.

This example shows how text in the color `rgb(197, 155, 111)` looks like.

```
.text, #text, p{  
    color:rgb(197, 155, 111)  
}
```

If you want to add a text shadow in that color use the text-shadow property, you can generate a text shadow directly with our [CSS Text Shadow Generator](#).

Here you see how black text with a 4 pixel rgb(197, 155, 111) colored shadow looks like.

```
.shadow{ text-shadow: 4px 4px 2px rgb(197, 155, 111) }
```

Border

The CSS property to change the border of an element to XYZ 37.6165, 36.4607, 20.0939 is called "border". The border property can be set on classes, ids or directly on the HTML element.

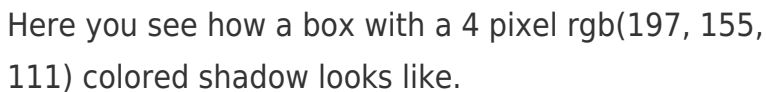
This example shows the color as border, it can be applied via the CSS property "border" or "border-color".

```
.border, #border, table{ border:4px solid rgb(197, 155, 111) }
```


If only the border color should be changed use the property `border-color`.

```
.border{ border-color:rgb(197, 155, 111) }
```

If you want to add a box shadow in that color use:



Here you see how a box with a 4 pixel `rgb(197, 155, 111)` colored shadow looks like.

```
.boxshadow{ -moz-box-shadow:4px 4px 4px 4px rgb(197, 155, 111); -webkit-box-shadow:4px 4px 4px 4px rgb(197, 155, 111); box-shadow:4px 4px 4px 4px rgb(197, 155, 111) }
```

Background

The CSS property to change the background color of an element to XYZ 37.6165, 36.4607, 20.0939 is called "background". The background property can be set on classes, ids or directly on the HTML element.

```
.background, #background, body{  
background: rgb(197, 155, 111) }
```

If only the background color should be changed can be used:

```
.background{ background-color: rgb(197,  
155, 111) }
```

This example shows the color as background, it is applied via the CSS property "background".

To optimize and compress your CSS code, you can use our [online CSS compressor and optimizer](#) based on csstidy. If you want to create a linear or radial gradient as background or border, check our [CSS Gradient Generator](#).

Hey! You found this booklet interesting? Support Converting Colors with the new Membership Option!

The pro membership hides all ads, plus gives you double the colors in the color bucket, and more awesome pro features!

[Learn more, Memberships starting at \\$2.50/m!](#)

**Follow me
on Twitter!**

@ConvertingColor