

Converting Colors

XYZ(37.6293, 37.5290, 41.8506)

Have a look what the booklet for
XYZ(37.6293, 37.5290, 41.8506)
contains.

XYZ(37.6244, 37.5099, 41.8163)	3
<i>Conversions</i>	4
<i>Details</i>	6
<i>Harmonies</i>	12
<i>Previews</i>	24
<i>Color Blindness Simulation</i>	28
<i>CSS Examples</i>	31

Color

**XYZ(37.6244, 37.5099,
41.8163)**

Conversions

Conversions Part 1

Format	Color
Hex	B0A1A7
RGB	176, 161, 167
RGB Percent	69%, 63%, 65%
CMY	0.3098, 0.3686, 0.3451
CMYK	0.00, 0.09, 0.05, 0.31
HSL	336°, 9%, 66%
HSV	336°, 9%, 69%
XYZ	37.6244, 37.5099, 41.8163
YIQ	166.1690, 7.0140, 5.0460

Conversions

Conversions Part 2

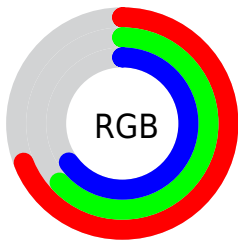
Format	Color
RYB	176, 161, 167
Decimal	11575719
CIELab	67.66, 6.53, -1.14
CIElCh	68, 6.629, 350.115
Yxy	37.5099, 0.3217, 0.3207
Android (android.graphics.Color)	4289765799 (0xFFB0A1A7)
YUV	166.1690, 0.4097, 8.6218
Hunter-Lab	61.2453, 2.4773, 2.3905

Details

The XYZ color **37.6244, 37.5099, 41.8163** is a light color, and the websafe version is hex **999999**. A complement of this color would be **37.4804, 41.5309, 44.0731**, and the grayscale version is **36.3238, 38.2155, 41.6167**.

A 20% lighter version of the original color is **71.0194, 71.5415, 79.1730**, and **16.7315, 16.3860, 18.5006** is the 20% darker color. If you saturate the color by 10%, you get **33.8259, 31.4119, 35.9279**, and if you desaturate by 10%, it is **41.9377, 44.5089, 48.2707**.

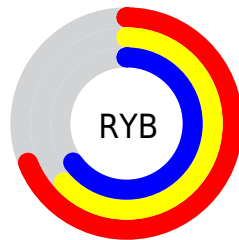
Distribution



Red (69%)

Green (63%)

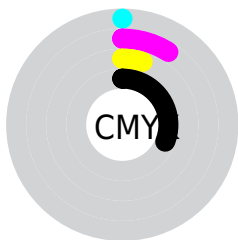
Blue (65%)



Red (69%)

Yellow (63%)

Blue (65%)

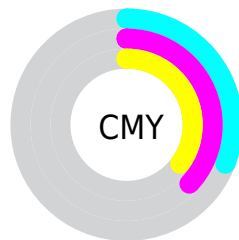


Cyan (0%)

Magenta (9%)

Yellow (5%)

Black (31%)



Cyan (31%)

Magenta (37%)

Yellow (35%)

Brightness & Saturation Gradients

These gradients show how the XYZ color 37.6244, 37.5099, 41.8163 changes by changing the brightness by 10 percent. The first figure shows a shift by +10% for each color and the second figure -10%.

Similar to the brightness gradients but the following saturation gradients show a change of the XYZ color 37.6244, 37.5099, 41.8163 by changing the saturation by 10% instead.

■ 37.6244, 37.5099,
41.8163

■ 37.6244, 37.5099,
41.8163

327.3148,
335.5129, 369.4980

■ 25.8672, 25.6025,
28.6330

■ 70.8397, 71.3563,
79.1886

■ 16.8565, 16.5265,
18.5602

■ 93.0285, 94.0642,
104.2147

■ 10.2269, 9.8975,
11.1793

119.4252,
121.1409, 134.0254

■ 5.6131, 5.3310,
6.0719

150.3952,
152.9711, 169.0394

■ 2.6497, 2.4428,
2.8193

186.3037,
189.9389, 209.6751

■ 0.9713, 0.8478,
1.0031

227.5163,

■ 0.0000, 0.0000,

232.4289, 256.3511

0.0000

274.3982,
280.8254, 309.4859

■ 37.6244, 37.5099,
41.8163

■ 37.6244, 37.5099,
41.8163

■ 33.8259, 31.4119,
35.9279

■ 41.9377, 44.5089,
48.2707

■ 30.5192, 26.1734,
30.5872

■ 46.7814, 52.4387,
55.3040

■ 27.6841, 21.7566,
25.7782

■ 52.1744, 61.3335,
62.9317

■ 25.2978, 18.1192,
21.4831

■ 58.1336, 71.2247,
71.1679

■ 23.3356, 15.2150,
17.6831

■ 64.6753, 82.1419,
80.0262

■ 21.7699, 12.9930,
14.3582

■ 68.0003, 86.4844,
88.2483

■ 20.5702, 11.3954,
11.4864

■ 69.5325, 87.0973,
96.3165

■ 19.7006, 10.3546,
9.0436

■ 71.1561, 87.7468,
104.8665

■ 19.1007, 9.7538,
6.9967

■ 71.7147, 87.9702,
107.8079

Harmonies

Analogous

The Analogous color harmony consists of three colors that are next to each other on the color wheel.



37.1822, 37.5099, 44.5604



37.6244, 37.5099, 41.8163



37.5304, 37.5099, 38.9358

Triad

The Triadic color harmony groups three colors that are evenly spaced from another and form a triangle on the color wheel.



37.6244, 37.5099, 41.8163



34.9801, 37.5099, 35.7791



34.4060, 37.5099, 45.3171

Complementary

The Complementary color scheme is a pair of colors which are on the opposite of each other on the color wheel.



37.6244, 37.5099, 41.8163



37.4804, 41.5309, 44.0731

Split Complementary

Split-complementary colors differ from the complementary color scheme. The scheme consists of three colors, the original color and two neighbors of the complement color.



33.8374, 37.5099, 42.8093



37.6244, 37.5099, 41.8163



34.1644, 37.5099, 37.3362

Square

The Square scheme is like the rectangle color scheme, but the four colors are evenly spaced on the color wheel.



37.6244, 37.5099, 41.8163



35.9907, 37.5099, 35.5417



33.7498, 37.5099, 39.8828



35.3155, 37.5099, 46.6445

Rectangle

The Rectangle color scheme consists of four colors that form a rectangle on the color wheel.



37.6244, 37.5099, 41.8163



37.1770, 37.5099, 37.3200



33.7498, 37.5099, 39.8828



34.1694, 37.5099, 44.5787

Sweetspot

The Sweet Spot groups the original color and five complimentary colors.



37.6255, 37.5115, 41.8171



72.3987, 74.7666, 82.1133



37.1602, 37.1722, 46.2911



15.5550, 15.9841, 17.5933



84.5950, 89.0005, 96.9216



16.2198, 17.0645, 18.5832

Same Dimension

The Same Dimension uses a secret algorithm to generate beautiful new colors.



37.6255, 37.5115, 41.8171



67.0362, 66.0921, 74.0048



37.3474, 37.8222, 39.0522



8.6325, 8.5597, 9.5629



13.9840, 7.1112, 5.0760



0.4692, 0.2354, 0.3135

Inverse Universe

The Inverse Universe completely reimagines the original color for something new.



37.6255, 37.5115, 41.8171



67.0362, 66.0921, 74.0048



37.7684, 41.1783, 47.0323



8.6325, 8.5597, 9.5629



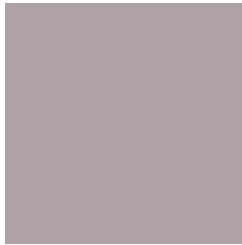
13.9840, 7.1112, 5.0760



0.4692, 0.2354, 0.3135

Previews

White Background



This preview shows how the XYZ color 37.6244, 37.5099, 41.8163 looks on a white background.

Color Contrast Check

Large Text (above 18pt) WCAG AA × Fail

Any Text WCAG AA × Fail

Large Text (above 18pt) WCAG AAA × Fail

Any Text WCAG AAA × Fail

Black Background



This preview shows how the XYZ color 37.6244, 37.5099, 41.8163 looks on a black background.

Color Contrast Check

Large Text (above 18pt) WCAG AA ✓ Pass

Any Text WCAG AA ✓ Pass

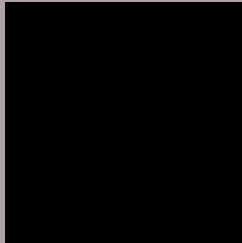
Large Text (above 18pt) WCAG AAA ✓ Pass

Any Text WCAG AAA ✓ Pass

If you want to check with other color combinations, try the [Color Contrast Checker](#).

XYZ 37.6244, 37.5099, 41.8163

Background



This preview shows how black text looks on a background with the XYZ color 37.6244, 37.5099, 41.8163.



This preview shows how white text looks on a background with the XYZ color 37.6244, 37.5099,

41.8163.

Color Blindness Simulation

Color vision deficiency is a very complex topic, and I could not describe the different causes any better than Wikipedia does, so if you want to learn more, you should check out their [article about color blindness](#).

Dichromacy



Original Color

37.6244, 37.5099, 41.8163

Protanopia

36.3732, 37.6310, 42.8825

Deuteranopia

38.3682, 37.6349, 41.8013



Tritanopia

38.2451, 37.5059, 44.7588

Trichromacy



Original Color

37.6244, 37.5099, 41.8163

Protanomaly

36.7426, 37.5676, 42.3605

Deuteranomaly

38.1363, 37.5153, 41.7904

Tritanomaly

38.0530, 37.4290, 43.7470

Monochromacy



Original Color

37.6244, 37.5099, 41.8163

Achromatopsia

36.2450, 38.1326, 41.5264

Achromatomaly

36.7360, 37.8501, 41.4460

CSS Examples

Text

The CSS property to change the color of the text to XYZ 37.6244, 37.5099, 41.8163 is called "color". The color property can be set on classes, ids or directly on the HTML element.

This example shows how text in the color `rgb(176, 161, 167)` looks like.

```
.text, #text, p{  
    color:rgb(176, 161, 167)  
}
```

If you want to add a text shadow in that color use the text-shadow property, you can generate a text shadow directly with our [CSS Text Shadow Generator](#).

Here you see how black text with a 4 pixel rgb(176, 161, 167) colored shadow looks like.

```
.shadow{ text-shadow: 4px 4px 2px rgb(176, 161, 167) }
```

Border

The CSS property to change the border of an element to XYZ 37.6244, 37.5099, 41.8163 is called "border". The border property can be set on classes, ids or directly on the HTML element.

This example shows the color as border, it can be applied via the CSS property "border" or "border-color".

```
.border, #border, table{ border:4px solid rgb(176, 161, 167) }
```


If only the border color should be changed use the property `border-color`.

```
.border{ border-color:rgb(176, 161, 167) }
```

If you want to add a box shadow in that color use:

Here you see how a box with a 4 pixel `rgb(176, 161, 167)` colored shadow looks like.

```
.boxshadow{ -moz-box-shadow:4px 4px 4px  
4px rgb(176, 161, 167); -webkit-box-  
shadow:4px 4px 4px 4px rgb(176, 161, 167);  
box-shadow:4px 4px 4px 4px rgb(176, 161,  
167) }
```

Background

The CSS property to change the background color of an element to XYZ 37.6244, 37.5099, 41.8163 is called "background". The background property can be set on classes, ids or directly on the HTML element.

```
.background, #background, body{  
background: rgb(176, 161, 167) }
```

If only the background color should be changed can be used:

```
.background{ background-color: rgb(176,  
161, 167) }
```

This example shows the color as background, it is applied via the CSS property "background".

To optimize and compress your CSS code, you can use our [online CSS compressor and optimizer](#) based on csstidy. If you want to create a linear or radial gradient as background or border, check our [CSS Gradient Generator](#).

Hey! You found this booklet interesting? Support Converting Colors with the new Membership Option!

The pro membership hides all ads, plus gives you double the colors in the color bucket, and more awesome pro features!

[Learn more, Memberships starting at \\$2.50/m!](#)

**Follow me
on Twitter!**

@ConvertingColor