

# Converting Colors

XYZ(37.6388, 35.1864, 34.0860)

Have a look what the booklet for  
XYZ(37.6388, 35.1864, 34.0860)  
contains.

<b>XYZ(37.6388, 35.1864, 34.0860)</b> .....	3
<b><i>Conversions</i></b> .....	4
<b><i>Details</i></b> .....	6
<b><i>Harmonies</i></b> .....	12
<b><i>Previews</i></b> .....	24
<b><i>Color Blindness Simulation</i></b> .....	28
<b><i>CSS Examples</i></b> .....	31

# Color

**XYZ(37.6388, 35.1864,  
34.0860)**

# Conversions

## Conversions Part 1

Format	Color
Hex	BD9797
RGB	189, 151, 151
RGB Percent	74%, 59%, 59%
CMY	0.2588, 0.4078, 0.4078
CMYK	0.00, 0.20, 0.20, 0.26
HSL	0°, 22%, 67%
HSV	0°, 20%, 74%
XYZ	37.6388, 35.1864, 34.0860
YIQ	162.3620, 22.6480, 8.0560

# Conversions

## Conversions Part 2

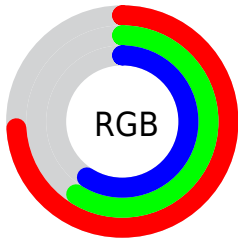
Format	Color
<a href="#">RYB</a>	<a href="#">189, 151, 151</a>
Decimal	<a href="#">12425111</a>
CIELab	<a href="#">65.89, 14.18, 5.40</a>
CIElCh	<a href="#">66, 15.174, 20.827</a>
Yxy	<a href="#">35.1864, 0.3521, 0.3291</a>
Android (android.graphics.Color)	<a href="#">4290615191</a> ( <a href="#">0xFFBD9797</a> )
YUV	<a href="#">162.3620, -5.6015, 23.3615</a>
Hunter-Lab	<a href="#">59.3181, 9.4559, 7.4528</a>

# Details

The XYZ color **37.6388, 35.1864, 34.0860** is a light color, and the websafe version is hex **CC9999**. A complement of this color would be **40.1450, 46.6474, 55.0324**, and the grayscale version is **34.5312, 36.3295, 39.5629**.

A 20% lighter version of the original color is **70.8568, 67.6633, 67.0834**, and **16.8491, 15.1853, 14.0996** is the 20% darker color. If you saturate the color by 10%, you get **33.4239, 29.0190, 25.7056**, and if you desaturate by 10%, it is **42.5893, 42.4305, 43.9264**.

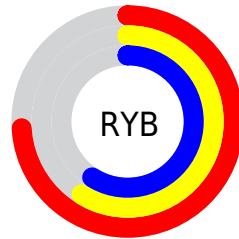
# Distribution



Red (74%)

Green (59%)

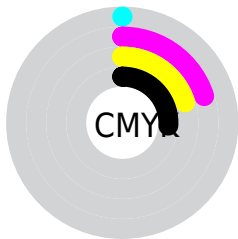
Blue (59%)



Red (74%)

Yellow (59%)

Blue (59%)

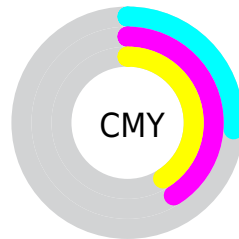


Cyan (0%)

Magenta (20%)

Yellow (20%)

Black (26%)



Cyan (26%)

Magenta (41%)


Yellow (41%)


# Brightness & Saturation Gradients

These gradients show how the XYZ color 37.6388, 35.1864, 34.0860 changes by changing the brightness by 10 percent. The first figure shows a shift by +10% for each color and the second figure -10%.


Similar to the brightness gradients but the following saturation gradients show a change of the XYZ color 37.6388, 35.1864, 34.0860 by changing the saturation by 10% instead.





 37.6388, 35.1864,  
34.0860


 37.6388, 35.1864,  
34.0860


327.3757,  
325.3903, 335.2962

 25.8784, 23.8065,  
22.6818


 70.8616, 67.7744,  
67.2028

 16.8649, 15.1901,  
14.1556


 93.0548, 89.7513,  
89.7525

 10.2329, 8.9529,  
8.0890


119.4563,  
116.0294, 116.8544

 5.6171, 4.7105,  
4.0634

150.4314,  
146.9930, 148.9270

 2.6521, 2.0784,  
1.6602

186.3456,  
183.0264, 186.3890

 0.9726, 0.6525,  
0.3332

227.5641,

 0.0000, 0.0000,

224.5142, 229.6588

0.0000

274.4524,  
271.8407, 279.1551

■ 37.6388, 35.1864,  
34.0860

■ 37.6388, 35.1864,  
34.0860

■ 33.4239, 29.0190,  
25.7056

■ 42.5893, 42.4305,  
43.9264

■ 29.9067, 23.8724,  
18.7137

■ 48.3050, 50.7941,  
55.2893

■ 27.0506, 19.6931,  
13.0360

■ 54.8175, 60.3236,  
68.2364

■ 24.8143, 16.4206,  
8.5904

■ 62.1557, 71.0613,  
82.8251

■ 23.1517, 13.9877,  
5.2856

■ 70.3472, 83.0474,  
99.1101

■ 22.0107, 12.3180,  
3.0176

■ 74.7964, 89.5589,  
107.9521

■ 21.3295, 11.3211,  
1.6638

■ 20.9866, 10.8193,  
0.9822

# Harmonies

## Analogous

The Analogous color harmony consists of three colors that are next to each other on the color wheel.



37.8846, 35.1864, 40.3150



37.6388, 35.1864, 34.0860



36.2425, 35.1864, 29.5120

# Triad

The Triadic color harmony groups three colors that are evenly spaced from another and form a triangle on the color wheel.



37.6388, 35.1864, 34.0860



30.2103, 35.1864, 31.0275



32.7608, 35.1864, 51.8452

# Complementary

The Complementary color scheme is a pair of colors which are on the opposite of each other on the color wheel.



37.6388, 35.1864, 34.0860



40.1450, 46.6474, 55.0324

# Split Complementary

Split-complementary colors differ from the complementary color scheme. The scheme consists of three colors, the original color and two neighbors of the complement color.



30.7926, 35.1864, 48.7076



37.6388, 35.1864, 34.0860



29.3640, 35.1864, 36.3765

# Square

The Square scheme is like the rectangle color scheme, but the four colors are evenly spaced on the color wheel.



37.6388, 35.1864, 34.0860



31.9335, 35.1864, 27.8881



29.5724, 35.1864, 42.8736



35.0006, 35.1864, 51.0551



# Rectangle

The Rectangle color scheme consists of four colors that form a rectangle on the color wheel.



37.6388, 35.1864, 34.0860



34.8801, 35.1864, 27.7895



29.5724, 35.1864, 42.8736



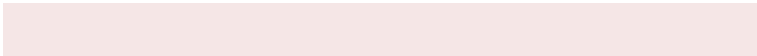
32.0471, 35.1864, 51.2029

# Sweetspot

The Sweet Spot groups the original color and five complimentary colors.



37.6398, 35.1880, 34.0867



80.2135, 81.7528, 86.4976



41.2386, 36.6266, 53.0406



17.1090, 17.3749, 18.3214



90.7827, 95.5105, 104.0109



18.6292, 19.5994, 21.3438



# Same Dimension

The Same Dimension uses a secret algorithm to generate beautiful new colors.



37.6398, 35.1880, 34.0867



64.0247, 58.0641, 54.3142



40.9473, 41.8030, 35.1892



9.5303, 9.5365, 9.9151



14.1204, 7.2796, 0.6609



0.5531, 0.2852, 0.0259

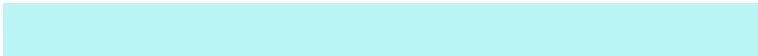


# Inverse Universe

The Inverse Universe completely reimagines the original color for something new.



40.1450, 46.6474, 55.0324



69.3025, 82.2060, 98.4409



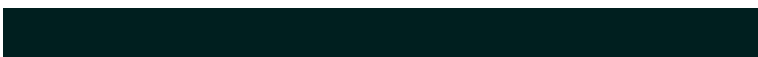
36.3229, 39.0033, 53.7584



9.8085, 10.8094, 12.2417



18.4215, 26.9548, 36.6248

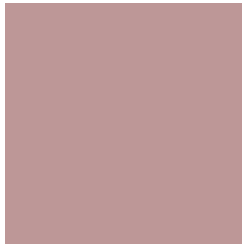


0.7216, 1.0559, 1.4346



# Previews

## White Background



This preview shows how the XYZ color 37.6388, 35.1864, 34.0860 looks on a white background.

## Color Contrast Check

Large Text (above 18pt) WCAG AA × Fail

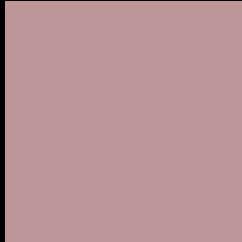
Any Text WCAG AA × Fail

Large Text (above 18pt) WCAG AAA × Fail

Any Text WCAG AAA × Fail



# Black Background



This preview shows how the XYZ color 37.6388, 35.1864, 34.0860 looks on a black background.

## Color Contrast Check

Large Text (above 18pt) WCAG AA ✓ Pass

Any Text WCAG AA ✓ Pass

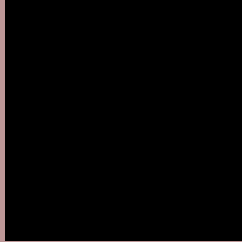
Large Text (above 18pt) WCAG AAA ✓ Pass

Any Text WCAG AAA ✓ Pass

If you want to check with other color combinations, try the [Color Contrast Checker](#).

**XYZ 37.6388, 35.1864, 34.0860**

## **Background**



This preview shows how black text looks on a background with the XYZ color 37.6388, 35.1864, 34.0860.



This preview shows how white text looks on a background with the XYZ color 37.6388, 35.1864,



# Color Blindness Simulation

Color vision deficiency is a very complex topic, and I could not describe the different causes any better than Wikipedia does, so if you want to learn more, you should check out their [article about color blindness](#).

## Dichromacy



### Original Color

37.6388, 35.1864, 34.0860

### Protanopia

33.8814, 35.4344, 36.5063

### Deuteranopia

36.0488, 35.3480, 33.7770



## Tritanopia

38.4157, 35.0153, 38.4521

# Trichromacy



## Original Color

37.6388, 35.1864, 34.0860

## Protanomaly

35.1233, 35.3313, 35.5403

## Deuteranomaly

36.5891, 35.3805, 33.7548

## Tritanomaly

38.2274, 35.1942, 36.6766

# Monochromacy



## Original Color

37.6388, 35.1864, 34.0860

## Achromatopsia

34.3422, 36.1307, 39.3463

## Achromatomaly

35.4117, 35.6930, 37.3708

# CSS Examples

## Text

The CSS property to change the color of the text to XYZ 37.6388, 35.1864, 34.0860 is called "color". The color property can be set on classes, ids or directly on the HTML element.

This example shows how text in the color `rgb(189, 151, 151)` looks like.

```
.text, #text, p{  
    color:rgb(189, 151, 151)  
}
```

If you want to add a text shadow in that color use the text-shadow property, you can generate a text shadow directly with our [CSS Text Shadow Generator](#).

Here you see how black text with a 4 pixel rgb(189, 151, 151) colored shadow looks like.

```
.shadow{ text-shadow: 4px 4px 2px rgb(189, 151, 151) }
```

## Border

The CSS property to change the border of an element to XYZ 37.6388, 35.1864, 34.0860 is called "border". The border property can be set on classes, ids or directly on the HTML element.

This example shows the color as border, it can be applied via the CSS property "border" or "border-color".

```
.border, #border, table{ border:4px solid rgb(189, 151, 151) }
```



If only the border color should be changed use the property border-color.

```
.border{ border-color:rgb(189, 151, 151) }
```

If you want to add a box shadow in that color use:

Here you see how a box with a 4 pixel rgb(189, 151, 151) colored shadow looks like.

```
.boxshadow{ -moz-box-shadow:4px 4px 4px  
4px rgb(189, 151, 151); -webkit-box-  
shadow:4px 4px 4px 4px rgb(189, 151, 151);  
box-shadow:4px 4px 4px 4px rgb(189, 151,  
151) }
```

# Background

The CSS property to change the background color of an element to XYZ 37.6388, 35.1864, 34.0860 is called "background". The background property can be set on classes, ids or directly on the HTML element.

```
.background, #background, body{  
background: rgb(189, 151, 151) }
```

If only the background color should be changed can be used:

```
.background{ background-color: rgb(189,  
151, 151) }
```

This example shows the color as background, it is applied via the CSS property "background".

To optimize and compress your CSS code, you can use our [online CSS compressor and optimizer](#) based on csstidy. If you want to create a linear or radial gradient as background or border, check our [CSS Gradient Generator](#).

Hey! You found this booklet interesting? Support Converting Colors with the new Membership Option!

The pro membership hides all ads, plus gives you double the colors in the color bucket, and more awesome pro features!

**[Learn more, Memberships starting at \\$2.50/m!](#)**

**Follow me  
on Twitter!**

@ConvertingColor