

Converting Colors

XYZ(37.6835, 37.4805, 21.1679)

Have a look what the booklet for
XYZ(37.6835, 37.4805, 21.1679)
contains.

XYZ(37.6835, 37.4805, 21.1679)	3
<i>Conversions</i>	4
<i>Details</i>	6
<i>Harmonies</i>	12
<i>Previews</i>	24
<i>Color Blindness Simulation</i>	28
<i>CSS Examples</i>	31

Color

**XYZ(37.6835, 37.4805,
21.1679)**

Conversions

Conversions Part 1

Format	Color
Hex	C29F72
RGB	194, 159, 114
RGB Percent	76%, 62%, 45%
CMY	0.2392, 0.3765, 0.5529
CMYK	0.00, 0.18, 0.41, 0.24
HSL	34°, 40%, 60%
HSV	34°, 41%, 76%
XYZ	37.6835, 37.4805, 21.1679
YIQ	164.3350, 35.3050, -6.5750

Conversions

Conversions Part 2

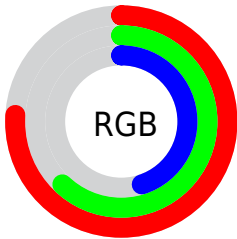
Format	Color
RYB	176, 194, 114
Decimal	12754802
CIELab	67.64, 6.82, 28.34
CIELCh	68, 29.148, 76.474
Yxy	37.4805, 0.3912, 0.3891
Android (android.graphics.Color)	4290944882 (0xFFC29F72)
YUV	164.3350, -24.8152, 26.0162
Hunter-Lab	61.2213, 2.7346, 22.3548

Details

The XYZ color **37.6835, 37.4805, 21.1679** is a light color, and the websafe version is hex **CC9966**. A complement of this color would be **27.4241, 28.9662, 55.1844**, and the grayscale version is **35.5498, 37.4012, 40.7299**.

A 20% lighter version of the original color is **71.0744, 71.5418, 46.1393**, and **16.9642, 16.5957, 7.3102** is the 20% darker color. If you saturate the color by 10%, you get **35.2849, 34.2669, 15.4862**, and if you desaturate by 10%, it is **40.4184, 40.9917, 28.1179**.

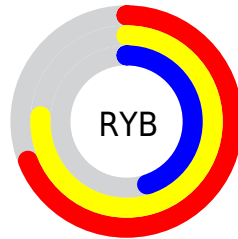
Distribution



Red (76%)

Green (62%)

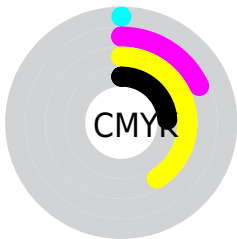
Blue (45%)



Red (69%)

Yellow (76%)

Blue (45%)

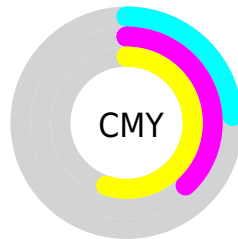


Cyan (0%)

Magenta (18%)

Yellow (41%)

Black (24%)



Cyan (24%)

Magenta (38%)

Yellow (55%)

Brightness & Saturation Gradients

These gradients show how the XYZ color 37.6835, 37.4805, 21.1679 changes by changing the brightness by 10 percent. The first figure shows a shift by +10% for each color and the second figure -10%.

Similar to the brightness gradients but the following saturation gradients show a change of the XYZ color 37.6835, 37.4805, 21.1679 by changing the saturation by 10% instead.

■ 37.6835, 37.4805,
21.1679

■ 37.6835, 37.4805,
21.1679

327.5647,
335.3862, 270.9797

■ 25.9132, 25.5797,
13.0543

■ 70.9298, 71.3112,
46.2512

■ 16.8911, 16.5095,
7.3348

■ 93.1365, 94.0099,
64.0581

■ 10.2517, 9.8854,
3.5908

■ 119.5528,
121.0767, 85.9331

■ 5.6297, 5.3230,
1.4036

■ 150.5440,
152.8960, 112.2948

■ 2.6598, 2.4380,
0.1445

186.4754,
189.8522, 143.5618

■ 0.9765, 0.8453,
0.0000

227.7124,

■ 0.0000, 0.0000,

232.3297, 180.1526

0.0000

274.6204,
280.7129, 222.4857

■ 37.6835, 37.4805,
21.1679

■ 37.6835, 37.4805,
21.1679

■ 35.2849, 34.2669,
15.4862

■ 40.4184, 40.9917,
28.1179

■ 33.2028, 31.3357,
10.9913

■ 43.5025, 44.8046,
36.4064

■ 31.4195, 28.6778,
7.5954

■ 46.9509, 48.9298,
46.1011

■ 29.9138, 26.2815,
5.1976

■ 50.7774, 53.3755,
57.2642

■ 28.6609, 24.1331,
3.6779

■ 54.9948, 58.1499,
69.9545

■ 27.7312, 22.4356,
2.8689

■ 59.6151, 63.2604,
84.2272

■ 64.6501, 68.7146,
100.1351

■ 67.7388, 73.5707,
105.2381

■ 70.1161, 78.3253,
106.0305

Harmonies

Analogous

The Analogous color harmony consists of three colors that are next to each other on the color wheel.



41.9125, 37.4805, 25.3678



37.6835, 37.4805, 21.1679



33.2294, 37.4805, 21.3814

Triad

The Triadic color harmony groups three colors that are evenly spaced from another and form a triangle on the color wheel.



37.6835, 37.4805, 21.1679



27.9637, 37.4805, 48.2379



42.2639, 37.4805, 60.3353

Complementary

The Complementary color scheme is a pair of colors which are on the opposite of each other on the color wheel.



37.6835, 37.4805, 21.1679



27.4241, 28.9662, 55.1844

Split Complementary

Split-complementary colors differ from the complementary color scheme. The scheme consists of three colors, the original color and two neighbors of the complement color.



38.1312, 37.4805, 69.4383



37.6835, 37.4805, 21.1679



29.9984, 37.4805, 61.5115

Square

The Square scheme is like the rectangle color scheme, but the four colors are evenly spaced on the color wheel.



37.6835, 37.4805, 21.1679



27.8659, 37.4805, 35.2913



33.6411, 37.4805, 69.9091



44.7032, 37.4805, 46.8757

Rectangle

The Rectangle color scheme consists of four colors that form a rectangle on the color wheel.



37.6835, 37.4805, 21.1679



30.7303, 37.4805, 23.9694



33.6411, 37.4805, 69.9091



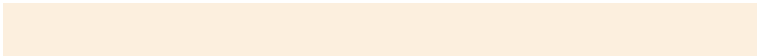
41.0117, 37.4805, 64.1194

Sweetspot

The Sweet Spot groups the original color and five complimentary colors.



37.6844, 37.4823, 21.1687



84.4383, 87.9109, 81.7350



33.7706, 25.7063, 32.0364



18.3019, 19.0276, 17.3602



0.0000, 0.0000, 0.0000



20.3446, 21.4041, 23.3091

Same Dimension

The Same Dimension uses a secret algorithm to generate beautiful new colors.



37.6844, 37.4823, 21.1687



64.5253, 62.9008, 29.4219



43.5643, 50.7455, 23.4188



10.5327, 10.9968, 10.6293



18.3154, 14.9165, 1.9138



0.8590, 0.7798, 0.1052

Inverse Universe

The Inverse Universe completely reimagines the original color for something new.



27.4241, 28.9662, 55.1844



43.5623, 45.5142, 98.9589



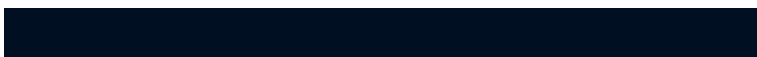
23.2265, 19.7817, 53.6329



9.8827, 10.4567, 12.7823



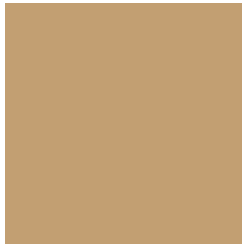
8.6096, 6.9757, 34.4493



0.4405, 0.4384, 1.5113

Previews

White Background



This preview shows how the XYZ color 37.6835, 37.4805, 21.1679 looks on a white background.

Color Contrast Check

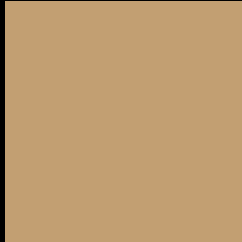
Large Text (above 18pt) WCAG AA × Fail

Any Text WCAG AA × Fail

Large Text (above 18pt) WCAG AAA × Fail

Any Text WCAG AAA × Fail

Black Background



This preview shows how the XYZ color 37.6835, 37.4805, 21.1679 looks on a black background.

Color Contrast Check

Large Text (above 18pt) WCAG AA ✓ Pass

Any Text WCAG AA ✓ Pass

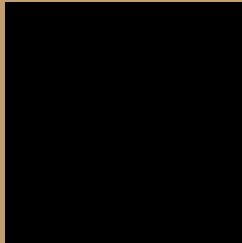
Large Text (above 18pt) WCAG AAA ✓ Pass

Any Text WCAG AAA ✓ Pass

If you want to check with other color combinations, try the [Color Contrast Checker](#).

XYZ 37.6835, 37.4805, 21.1679

Background



This preview shows how black text looks on a background with the XYZ color 37.6835, 37.4805, 21.1679.



This preview shows how white text looks on a background with the XYZ color 37.6835, 37.4805,

Color Blindness Simulation

Color vision deficiency is a very complex topic, and I could not describe the different causes any better than Wikipedia does, so if you want to learn more, you should check out their [article about color blindness](#).

Dichromacy



Original Color

37.6835, 37.4805, 21.1679

Protanopia

34.9676, 37.6362, 21.9445

Deuteranopia

38.2901, 37.5389, 21.1472



Tritanopia

41.4823, 37.2789, 40.1312

Trichromacy



Original Color

37.6835, 37.4805, 21.1679

Protanomaly

35.9589, 37.6225, 21.5863

Deuteranomaly

38.0291, 37.4044, 21.1350

Tritanomaly

39.9356, 37.3883, 32.3060

Monochromacy



Original Color

37.6835, 37.4805, 21.1679

Achromatopsia

35.2861, 37.1238, 40.4278

Achromatomaly

35.7878, 37.0299, 32.4554

CSS Examples

Text

The CSS property to change the color of the text to XYZ 37.6835, 37.4805, 21.1679 is called "color". The color property can be set on classes, ids or directly on the HTML element.

This example shows how text in the color `rgb(194, 159, 114)` looks like.

```
.text, #text, p{  
    color:rgb(194, 159, 114)  
}
```

If you want to add a text shadow in that color use the text-shadow property, you can generate a text shadow directly with our [CSS Text Shadow Generator](#).

Here you see how black text with a 4 pixel rgb(194, 159, 114) colored shadow looks like.

```
.shadow{ text-shadow: 4px 4px 2px rgb(194, 159, 114) }
```

Border

The CSS property to change the border of an element to XYZ 37.6835, 37.4805, 21.1679 is called "border". The border property can be set on classes, ids or directly on the HTML element.

This example shows the color as border, it can be applied via the CSS property "border" or "border-color".

```
.border, #border, table{ border:4px solid rgb(194, 159, 114) }
```


If only the border color should be changed use the property `border-color`.

```
.border{ border-color:rgb(194, 159, 114) }
```

If you want to add a box shadow in that color use:

Here you see how a box with a 4 pixel `rgb(194, 159, 114)` colored shadow looks like.

```
.boxshadow{ -moz-box-shadow:4px 4px 4px  
4px rgb(194, 159, 114); -webkit-box-  
shadow:4px 4px 4px 4px rgb(194, 159, 114);  
box-shadow:4px 4px 4px 4px rgb(194, 159,  
114) }
```

Background

The CSS property to change the background color of an element to XYZ 37.6835, 37.4805, 21.1679 is called "background". The background property can be set on classes, ids or directly on the HTML element.

```
.background, #background, body{  
background: rgb(194, 159, 114) }
```

If only the background color should be changed can be used:

```
.background{ background-color: rgb(194,  
159, 114) }
```

This example shows the color as background, it is applied via the CSS property "background".

To optimize and compress your CSS code, you can use our [online CSS compressor and optimizer](#) based on csstidy. If you want to create a linear or radial gradient as background or border, check our [CSS Gradient Generator](#).

Hey! You found this booklet interesting? Support Converting Colors with the new Membership Option!

The pro membership hides all ads, plus gives you double the colors in the color bucket, and more awesome pro features!

[Learn more, Memberships starting at \\$2.50/m!](#)

**Follow me
on Twitter!**

@ConvertingColor