

Converting Colors

XYZ(37.7111, 36.5591, 29.1138)

Have a look what the booklet for
XYZ(37.7111, 36.5591, 29.1138)
contains.

XYZ(37.7111, 36.5591, 29.1138)	3
<i>Conversions</i>	4
<i>Details</i>	6
<i>Harmonies</i>	12
<i>Previews</i>	24
<i>Color Blindness Simulation</i>	28
<i>CSS Examples</i>	31

Color

**XYZ(37.7111, 36.5591,
29.1138)**

Conversions

Conversions Part 1

Format	Color
Hex	BE9C8A
RGB	190, 156, 138
RGB Percent	75%, 61%, 54%
CMY	0.2549, 0.3882, 0.4588
CMYK	0.00, 0.18, 0.27, 0.25
HSL	21°, 29%, 64%
HSV	21°, 27%, 75%
XYZ	37.7111, 36.5591, 29.1138
YIQ	164.1140, 26.0420, 1.6100

Conversions

Conversions Part 2

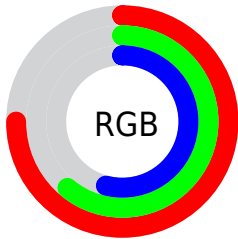
Format	Color
R _Y B	190, 166, 138
Decimal	12491914
CIE Lab	66.94, 9.89, 14.16
CIE LCh	67, 17.270, 55.082
Yxy	36.5591, 0.3648, 0.3536
Android (android.graphics.Color)	4290681994 (0xFFBE9C8A)
YUV	164.1140, -12.8742, 22.7020
Hunter-Lab	60.4641, 5.5171, 13.7764

Details

The XYZ color **37.7111, 36.5591, 29.1138** is a light color, and the websafe version is hex **CC9999**. A complement of this color would be **34.5276, 38.6248, 54.3508**, and the grayscale version is **35.3924, 37.2355, 40.5495**.

A 20% lighter version of the original color is **71.0560, 70.1243, 59.0805**, and **16.9664, 16.0420, 11.4347** is the 20% darker color. If you saturate the color by 10%, you get **34.4753, 32.0997, 21.8320**, and if you desaturate by 10%, it is **41.4027, 41.5446, 37.7356**.

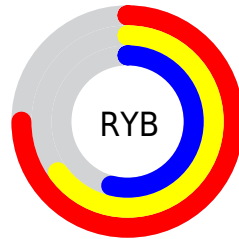
Distribution



Red (75%)

Green (61%)

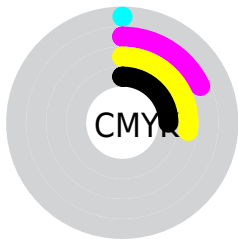
Blue (54%)



Red (75%)

Yellow (65%)

Blue (54%)

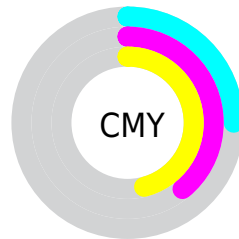


Cyan (0%)

Magenta (18%)

Yellow (27%)

Black (25%)



Cyan (25%)

Magenta (39%)

Yellow (46%)

Brightness & Saturation Gradients

These gradients show how the XYZ color 37.7111, 36.5591, 29.1138 changes by changing the brightness by 10 percent. The first figure shows a shift by +10% for each color and the second figure -10%.

Similar to the brightness gradients but the following saturation gradients show a change of the XYZ color 37.7111, 36.5591, 29.1138 by changing the saturation by 10% instead.

■ 37.7111, 36.5591,
29.1138

■ 37.7111, 36.5591,
29.1138

327.6814,
331.3977, 311.8292

■ 25.9347, 24.8663,
18.9206

■ 70.9719, 69.8942,
59.3022

■ 16.9072, 15.9775,
11.4367

■ 93.1870, 92.3052,
80.1345

■ 10.2633, 9.5082,
6.2435

■ 119.6124,
119.0578, 105.3502

■ 5.6375, 5.0741,
2.9225

150.6135,
150.5363, 135.3679

■ 2.6645, 2.2908,
1.0552

186.5555,
187.1252, 170.6061

■ 0.9789, 0.7688,
0.0000

227.8040,

■ 0.0000, 0.0000,

229.2088, 211.4833

0.0000

274.7241,
277.1715, 258.4182

■ 37.7111, 36.5591,
29.1138

■ 37.7111, 36.5591,
29.1138

■ 34.4753, 32.0997,
21.8320

■ 41.4027, 41.5446,
37.7356

■ 31.6736, 28.1434,
15.8198

■ 45.5648, 47.0678,
47.7585

■ 29.2864, 24.6732,
11.0037

■ 50.2153, 53.1466,
59.2422

■ 27.2917, 21.6688,
7.3017

■ 55.3701, 59.7964,
72.2428

■ 25.6648, 19.1087,
4.6213

■ 61.0441, 67.0318,
86.8129

■ 24.3780, 16.9689,
2.8547

■ 67.2519, 74.8671,
103.0028

■ 23.3941, 15.2210,
1.8486

■ 71.3227, 82.2420,
106.7229

■ 23.1709, 14.8184,
1.6390

■ 75.0452, 89.6872,
107.9638

Harmonies

Analogous

The Analogous color harmony consists of three colors that are next to each other on the color wheel.



39.5114, 36.5591, 34.0008



37.7111, 36.5591, 29.1138



35.1818, 36.5591, 27.0978

Triad

The Triadic color harmony groups three colors that are evenly spaced from another and form a triangle on the color wheel.



37.7111, 36.5591, 29.1138



29.9689, 36.5591, 38.5831



36.9270, 36.5591, 54.3488

Complementary

The Complementary color scheme is a pair of colors which are on the opposite of each other on the color wheel.



37.7111, 36.5591, 29.1138



34.5276, 38.6248, 54.3508

Split Complementary

Split-complementary colors differ from the complementary color scheme. The scheme consists of three colors, the original color and two neighbors of the complement color.



34.3184, 36.5591, 55.9730



37.7111, 36.5591, 29.1138



30.3843, 36.5591, 46.2384

Square

The Square scheme is like the rectangle color scheme, but the four colors are evenly spaced on the color wheel.



37.7111, 36.5591, 29.1138



30.7807, 36.5591, 32.1093



31.9449, 36.5591, 52.8414



39.0430, 36.5591, 48.6452

Rectangle

The Rectangle color scheme consists of four colors that form a rectangle on the color wheel.



37.7111, 36.5591, 29.1138



33.4545, 36.5591, 27.4426



31.9449, 36.5591, 52.8414



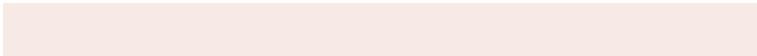
36.0751, 36.5591, 55.4180

Sweetspot

The Sweet Spot groups the original color and five complimentary colors.



37.7121, 36.5608, 29.1146



81.9648, 84.4962, 85.0698



37.8345, 32.1288, 43.5739



17.7360, 18.2079, 18.0421



92.9021, 97.7402, 106.4391



19.4759, 20.4902, 22.3138

Same Dimension

The Same Dimension uses a secret algorithm to generate beautiful new colors.



37.7121, 36.5608, 29.1146



64.6277, 61.1582, 44.3425



42.4146, 45.9658, 30.6820



9.7930, 10.0621, 10.0027



15.4741, 9.9869, 1.1121



0.6682, 0.5153, 0.0642

Inverse Universe

The Inverse Universe completely reimagines the original color for something new.



34.5276, 38.6248, 54.3508



57.8654, 65.5235, 97.8766



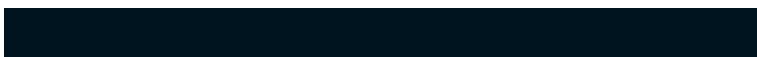
30.1578, 29.8854, 52.8942



9.5229, 10.2382, 12.1465



11.0664, 12.2445, 34.1731



0.4923, 0.5973, 1.3582

Previews

White Background



This preview shows how the XYZ color 37.7111, 36.5591, 29.1138 looks on a white background.

Color Contrast Check

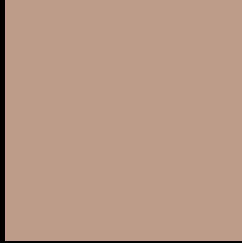
Large Text (above 18pt) WCAG AA × Fail

Any Text WCAG AA × Fail

Large Text (above 18pt) WCAG AAA × Fail

Any Text WCAG AAA × Fail

Black Background



This preview shows how the XYZ color 37.7111, 36.5591, 29.1138 looks on a black background.

Color Contrast Check

Large Text (above 18pt) WCAG AA ✓ Pass

Any Text WCAG AA ✓ Pass

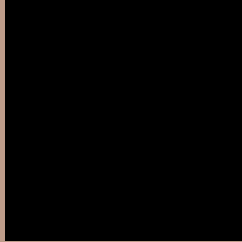
Large Text (above 18pt) WCAG AAA ✓ Pass

Any Text WCAG AAA ✓ Pass

If you want to check with other color combinations, try the [Color Contrast Checker](#).

XYZ 37.7111, 36.5591, 29.1138

Background



This preview shows how black text looks on a background with the XYZ color 37.7111, 36.5591, 29.1138.



This preview shows how white text looks on a background with the XYZ color 37.7111, 36.5591,

Color Blindness Simulation

Color vision deficiency is a very complex topic, and I could not describe the different causes any better than Wikipedia does, so if you want to learn more, you should check out their [article about color blindness](#).

Dichromacy



Original Color

37.7111, 36.5591, 29.1138

Protanopia

34.6995, 36.7754, 30.4688

Deuteranopia

37.3835, 36.6403, 29.1467



Tritanopia

39.9214, 36.4743, 40.0581

Trichromacy



Original Color

37.7111, 36.5591, 29.1138

Protanomaly

35.6645, 36.5000, 29.9764

Deuteranomaly

37.6307, 36.7677, 29.1583

Tritanomaly

39.0459, 36.3555, 35.9697

Monochromacy



Original Color

37.7111, 36.5591, 29.1138

Achromatopsia

35.2861, 37.1238, 40.4278

Achromatomaly

35.8948, 36.7405, 36.2101

CSS Examples

Text

The CSS property to change the color of the text to XYZ 37.7111, 36.5591, 29.1138 is called "color". The color property can be set on classes, ids or directly on the HTML element.

This example shows how text in the color `rgb(190, 156, 138)` looks like.

```
.text, #text, p{  
    color:rgb(190, 156, 138)  
}
```

If you want to add a text shadow in that color use the text-shadow property, you can generate a text shadow directly with our [CSS Text Shadow Generator](#).

Here you see how black text with a 4 pixel rgb(190, 156, 138) colored shadow looks like.

```
.shadow{ text-shadow: 4px 4px 2px rgb(190, 156, 138) }
```

Border

The CSS property to change the border of an element to XYZ 37.7111, 36.5591, 29.1138 is called "border". The border property can be set on classes, ids or directly on the HTML element.

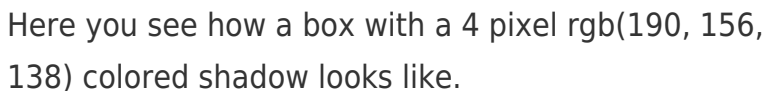
This example shows the color as border, it can be applied via the CSS property "border" or "border-color".

```
.border, #border, table{ border:4px solid rgb(190, 156, 138) }
```


If only the border color should be changed use the property border-color.

```
.border{ border-color:rgb(190, 156, 138) }
```

If you want to add a box shadow in that color use:



Here you see how a box with a 4 pixel rgb(190, 156, 138) colored shadow looks like.

```
.boxshadow{ -moz-box-shadow:4px 4px 4px  
4px rgb(190, 156, 138); -webkit-box-  
shadow:4px 4px 4px 4px rgb(190, 156, 138);  
box-shadow:4px 4px 4px 4px rgb(190, 156,  
138) }
```

Background

The CSS property to change the background color of an element to XYZ 37.7111, 36.5591, 29.1138 is called "background". The background property can be set on classes, ids or directly on the HTML element.

```
.background, #background, body{  
background: rgb(190, 156, 138) }
```

If only the background color should be changed can be used:

```
.background{ background-color: rgb(190,  
156, 138) }
```

This example shows the color as background, it is applied via the CSS property "background".

To optimize and compress your CSS code, you can use our [online CSS compressor and optimizer](#) based on csstidy. If you want to create a linear or radial gradient as background or border, check our [CSS Gradient Generator](#).

Hey! You found this booklet interesting? Support Converting Colors with the new Membership Option!

The pro membership hides all ads, plus gives you double the colors in the color bucket, and more awesome pro features!

[Learn more, Memberships starting at \\$2.50/m!](#)

**Follow me
on Twitter!**

@ConvertingColor