

Converting Colors

XYZ(37.7572, 36.5487, 30.6558)

Have a look what the booklet for
XYZ(37.7572, 36.5487, 30.6558)
contains.

XYZ(37.7572, 36.5487, 30.6558)	3
<i>Conversions</i>	4
<i>Details</i>	6
<i>Harmonies</i>	12
<i>Previews</i>	24
<i>Color Blindness Simulation</i>	28
<i>CSS Examples</i>	31

Color

**XYZ(37.7572, 36.5487,
30.6558)**

Conversions

Conversions Part 1

Format	Color
Hex	BD9C8E
RGB	189, 156, 142
RGB Percent	74%, 61%, 56%
CMY	0.2588, 0.3882, 0.4431
CMYK	0.00, 0.17, 0.25, 0.26
HSL	18°, 26%, 65%
HSV	18°, 25%, 74%
XYZ	37.7572, 36.5487, 30.6558
YIQ	164.2710, 24.1620, 2.6420

Conversions

Conversions Part 2

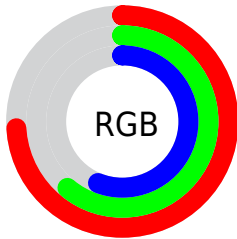
Format	Color
R _{YB}	189, 162, 142
Decimal	12426382
CIE Lab	66.94, 10.07, 11.91
CIE LCh	67, 15.597, 49.792
Yxy	36.5487, 0.3597, 0.3482
Android (android.graphics.Color)	4290616462 (0xFFBD9C8E)
YUV	164.2710, -10.9796, 21.6873
Hunter-Lab	60.4555, 5.6841, 12.2541

Details

The XYZ color **37.7572, 36.5487, 30.6558** is a light color, and the websafe version is hex **CC9999**. A complement of this color would be **35.6703, 40.0838, 54.0012**, and the grayscale version is **35.4591, 37.3057, 40.6259**.

A 20% lighter version of the original color is **71.2641, 70.1669, 62.0121**, and **16.9750, 16.0268, 12.3240** is the 20% darker color. If you saturate the color by 10%, you get **34.3507, 31.8172, 23.1030**, and if you desaturate by 10%, it is **41.6496, 41.8664, 39.5585**.

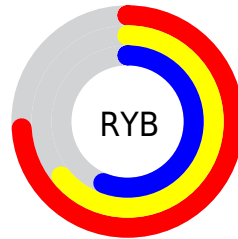
Distribution



Red (74%)

Green (61%)

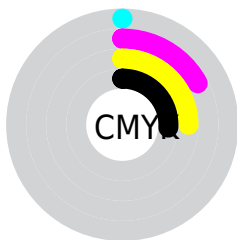
Blue (56%)



Red (74%)

Yellow (64%)

Blue (56%)

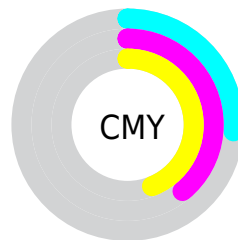


Cyan (0%)

Magenta (17%)

Yellow (25%)

Black (26%)



Cyan (26%)

Magenta (39%)

Yellow (44%)

Brightness & Saturation Gradients

These gradients show how the XYZ color 37.7572, 36.5487, 30.6558 changes by changing the brightness by 10 percent. The first figure shows a shift by +10% for each color and the second figure -10%.

Similar to the brightness gradients but the following saturation gradients show a change of the XYZ color 37.7572, 36.5487, 30.6558 by changing the saturation by 10% instead.

■ 37.7572, 36.5487,
30.6558

■ 37.7572, 36.5487,
30.6558

327.8762,
331.3525, 319.2514

■ 25.9707, 24.8583,
20.0806

■ 71.0421, 69.8781,
61.7710

■ 16.9343, 15.9715,
12.2690

■ 93.2712, 92.2859,
83.1480

■ 10.2826, 9.5040,
6.8024

119.7119,
119.0350, 108.9628

■ 5.6505, 5.0713,
3.2623

150.7295,
150.5096, 139.6339

■ 2.6724, 2.2892,
1.2301

186.6894,
187.0943, 175.5797

■ 0.9830, 0.7680,
0.0034

227.9569,

■ 0.0000, 0.0000,

229.1734, 217.2189

0.0000

274.8973,
277.1313, 264.9699

■ 37.7572, 36.5487,
30.6558

■ 37.7572, 36.5487,
30.6558

■ 34.3507, 31.8172,
23.1030

■ 41.6496, 41.8664,
39.5585

■ 31.4072, 27.6463,
16.8313

■ 46.0436, 47.7845,
49.8706

■ 28.9063, 24.0161,
11.7692

■ 50.9578, 54.3232,
61.6509

■ 26.8248, 20.9034,
7.8374

■ 56.4092, 61.5001,
74.9542

■ 25.1372, 18.2834,
4.9468

■ 62.4136, 69.3321,
89.8323

■ 23.8147, 16.1287,
2.9947

■ 68.9218, 77.8097,
105.9939

■ 22.8238, 14.4088,
1.8568

■ 72.8769, 85.7199,
107.3123

■ 22.4157, 13.6776,
1.4586

■ 74.7964, 89.5589,
107.9521

Harmonies

Analogous

The Analogous color harmony consists of three colors that are next to each other on the color wheel.



39.1948, 36.5487, 35.5468



37.7572, 36.5487, 30.6558



35.5505, 36.5487, 28.3060

Triad

The Triadic color harmony groups three colors that are evenly spaced from another and form a triangle on the color wheel.



37.7572, 36.5487, 30.6558



30.4529, 36.5487, 37.5319



36.3009, 36.5487, 53.3486

Complementary

The Complementary color scheme is a pair of colors which are on the opposite of each other on the color wheel.



37.7572, 36.5487, 30.6558



35.6703, 40.0838, 54.0012

Split Complementary

Split-complementary colors differ from the complementary color scheme. The scheme consists of three colors, the original color and two neighbors of the complement color.



33.9389, 36.5487, 54.0361



37.7572, 36.5487, 30.6558



30.6334, 36.5487, 44.3695

Square

The Square scheme is like the rectangle color scheme, but the four colors are evenly spaced on the color wheel.



37.7572, 36.5487, 30.6558



31.3804, 36.5487, 31.9669



31.8850, 36.5487, 50.5917



38.3279, 36.5487, 48.8076

Rectangle

The Rectangle color scheme consists of four colors that form a rectangle on the color wheel.



37.7572, 36.5487, 30.6558



33.9709, 36.5487, 28.2929



31.8850, 36.5487, 50.5917



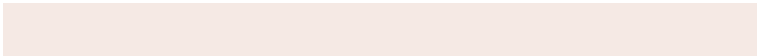
35.5175, 36.5487, 54.0562

Sweetspot

The Sweet Spot groups the original color and five complimentary colors.



37.7582, 36.5504, 30.6566



80.6172, 83.1068, 84.9467



38.4648, 33.2873, 45.3083



17.2322, 17.7319, 18.0217



90.7827, 95.5105, 104.0109



18.6292, 19.5994, 21.3438

Same Dimension

The Same Dimension uses a secret algorithm to generate beautiful new colors.



37.7582, 36.5504, 30.6566



64.0949, 60.5773, 47.0227



41.9524, 44.9389, 32.0546



9.7557, 9.9873, 9.9902



15.1410, 9.3207, 1.0011



0.6521, 0.4831, 0.0589

Inverse Universe

The Inverse Universe completely reimagines the original color for something new.



35.6703, 40.0838, 54.0012



59.6900, 68.0107, 96.2076



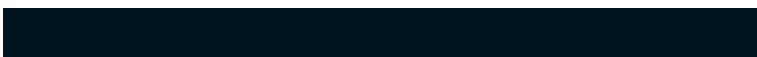
31.5991, 31.9414, 52.6442



9.5620, 10.3164, 12.1595



11.8640, 13.8397, 34.4389



0.5192, 0.6511, 1.3672

Previews

White Background



This preview shows how the XYZ color 37.7572, 36.5487, 30.6558 looks on a white background.

Color Contrast Check

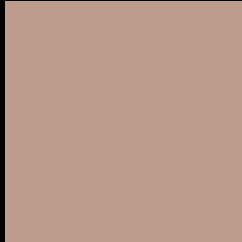
Large Text (above 18pt) WCAG AA × Fail

Any Text WCAG AA × Fail

Large Text (above 18pt) WCAG AAA × Fail

Any Text WCAG AAA × Fail

Black Background



This preview shows how the XYZ color 37.7572, 36.5487, 30.6558 looks on a black background.

Color Contrast Check

Large Text (above 18pt) WCAG AA ✓ Pass

Any Text WCAG AA ✓ Pass

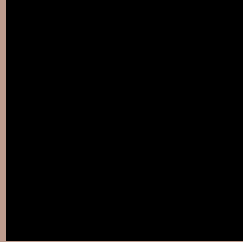
Large Text (above 18pt) WCAG AAA ✓ Pass

Any Text WCAG AAA ✓ Pass

If you want to check with other color combinations, try the [Color Contrast Checker](#).

XYZ 37.7572, 36.5487, 30.6558

Background



This preview shows how black text looks on a background with the XYZ color 37.7572, 36.5487, 30.6558.



This preview shows how white text looks on a background with the XYZ color 37.7572, 36.5487,

Color Blindness Simulation

Color vision deficiency is a very complex topic, and I could not describe the different causes any better than Wikipedia does, so if you want to learn more, you should check out their [article about color blindness](#).

Dichromacy



Original Color

37.7572, 36.5487, 30.6558

Protanopia

34.7856, 36.7848, 32.0548

Deuteranopia

37.1892, 36.5060, 30.6775



Tritanopia

39.9210, 36.7055, 40.5781

Trichromacy



Original Color

37.7572, 36.5487, 30.6558

Protanomaly

35.7363, 36.5023, 31.5477

Deuteranomaly

37.4330, 36.6317, 30.6889

Tritanomaly

39.1273, 36.6219, 36.9048

Monochromacy



Original Color

37.7572, 36.5487, 30.6558

Achromatopsia

35.2861, 37.1238, 40.4278

Achromatomaly

35.9792, 36.7743, 36.6543

CSS Examples

Text

The CSS property to change the color of the text to XYZ 37.7572, 36.5487, 30.6558 is called "color". The color property can be set on classes, ids or directly on the HTML element.

This example shows how text in the color `rgb(189, 156, 142)` looks like.

```
.text, #text, p{  
    color:rgb(189, 156, 142)  
}
```

If you want to add a text shadow in that color use the text-shadow property, you can generate a text shadow directly with our [CSS Text Shadow Generator](#).

Here you see how black text with a 4 pixel rgb(189, 156, 142) colored shadow looks like.

```
.shadow{ text-shadow: 4px 4px 2px rgb(189, 156, 142) }
```

Border

The CSS property to change the border of an element to XYZ 37.7572, 36.5487, 30.6558 is called "border". The border property can be set on classes, ids or directly on the HTML element.

This example shows the color as border, it can be applied via the CSS property "border" or "border-color".

```
.border, #border, table{ border:4px solid rgb(189, 156, 142) }
```


If only the border color should be changed use the property `border-color`.

```
.border{ border-color:rgb(189, 156, 142) }
```

If you want to add a box shadow in that color use:

Here you see how a box with a 4 pixel `rgb(189, 156, 142)` colored shadow looks like.

```
.boxshadow{ -moz-box-shadow:4px 4px 4px  
4px rgb(189, 156, 142); -webkit-box-  
shadow:4px 4px 4px 4px rgb(189, 156, 142);  
box-shadow:4px 4px 4px 4px rgb(189, 156,  
142) }
```

Background

The CSS property to change the background color of an element to XYZ 37.7572, 36.5487, 30.6558 is called "background". The background property can be set on classes, ids or directly on the HTML element.

```
.background, #background, body{  
background: rgb(189, 156, 142) }
```

If only the background color should be changed can be used:

```
.background{ background-color: rgb(189,  
156, 142) }
```

This example shows the color as background, it is applied via the CSS property "background".

To optimize and compress your CSS code, you can use our [online CSS compressor and optimizer](#) based on csstidy. If you want to create a linear or radial gradient as background or border, check our [CSS Gradient Generator](#).

Hey! You found this booklet interesting? Support Converting Colors with the new Membership Option!

The pro membership hides all ads, plus gives you double the colors in the color bucket, and more awesome pro features!

[Learn more, Memberships starting at \\$2.50/m!](#)

**Follow me
on Twitter!**

@ConvertingColor