

Converting Colors

XYZ(37.7828, 35.7709, 36.2030)

Have a look what the booklet for
XYZ(37.7828, 35.7709, 36.2030)
contains.

XYZ(37.8855, 35.7476, 36.3557)	3
<i>Conversions</i>	4
<i>Details</i>	6
<i>Harmonies</i>	12
<i>Previews</i>	24
<i>Color Blindness Simulation</i>	28
<i>CSS Examples</i>	31

Color

**XYZ(37.8855, 35.7476,
36.3557)**

Conversions

Conversions Part 1

Format	Color
Hex	BB999C
RGB	187, 153, 156
RGB Percent	73%, 60%, 61%
CMY	0.2667, 0.4000, 0.3882
CMYK	0.00, 0.18, 0.17, 0.27
HSL	355°, 20%, 67%
HSV	355°, 18%, 73%
XYZ	37.8855, 35.7476, 36.3557
YIQ	163.5080, 19.3010, 8.1410

Conversions

Conversions Part 2

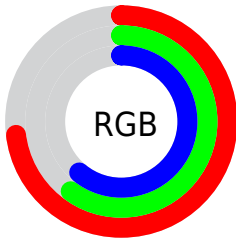
Format	Color
RYB	187, 153, 156
Decimal	12294556
CIELab	66.33, 13.12, 3.19
CIElCh	66, 13.499, 13.678
Yxy	35.7476, 0.3444, 0.3250
Android (android.graphics.Color)	4290484636 (0xFFBB999C)
YUV	163.5080, -3.7014, 20.6025
Hunter-Lab	59.7893, 8.4753, 5.8004

Details

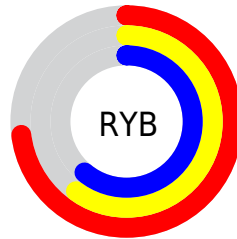
The XYZ color **37.8855, 35.7476, 36.3557** is a light color, and the websafe version is hex **CC9999**. A complement of this color would be **39.5604, 45.7745, 52.1000**, and the grayscale version is **35.0644, 36.8905, 40.1738**.

A 20% lighter version of the original color is **71.2539, 68.5119, 70.4414**, and **16.9740, 15.5092, 15.4635** is the 20% darker color. If you saturate the color by 10%, you get **33.7174, 29.5620, 28.3356**, and if you desaturate by 10%, it is **42.7380, 42.9768, 45.6049**.

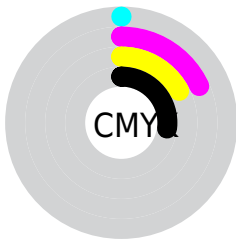
Distribution



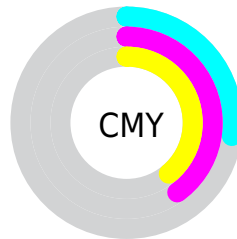
- Red (73%)
- Green (60%)
- Blue (61%)



- Red (73%)
- Yellow (60%)
- Blue (61%)



- Cyan (0%)
- Magenta (18%)
- Yellow (17%)
- Black (27%)





- Cyan (27%)
- Magenta (40%)
- Yellow (39%)

Brightness & Saturation Gradients


These gradients show how the XYZ color 37.8855, 35.7476, 36.3557 changes by changing the brightness by 10 percent. The first figure shows a shift by +10% for each color and the second figure -10%.


Similar to the brightness gradients but the following saturation gradients show a change of the XYZ color 37.8855, 35.7476, 36.3557 by changing the saturation by 10% instead.


 37.8855, 35.7476,
36.3557


 37.8855, 35.7476,
36.3557

328.4179,
327.8560, 345.5969

 26.0706, 24.2393,
24.4172


 71.2376, 68.6423,
70.7559

 17.0095, 15.5112,
15.4283


 93.5056, 90.7975,
94.0547

 10.3366, 9.1790,
8.9706


119.9887,
117.2705, 121.9774

 5.6867, 4.8581,
4.6254

151.0522,
148.4457, 154.9424

 2.6943, 2.1642,
1.9744

187.0616,
184.7075, 193.3683

 0.9943, 0.7004,
0.5394

228.3820,

 0.0000, 0.0000,

226.4402, 237.6736

0.0000

275.3790,
274.0282, 288.2770

■ 37.8855, 35.7476,
36.3557

■ 37.8855, 35.7476,
36.3557

■ 33.7174, 29.5620,
28.3356

■ 42.7380, 42.9768,
45.6049

■ 30.2001, 24.3673,
21.4907

■ 48.3006, 51.2897,
56.1294

■ 27.3014, 20.1134,
15.7664

■ 54.6015, 60.7299,
67.9762

■ 24.9855, 16.7439,
11.1028

■ 61.6662, 71.3375,
81.1887

■ 23.2127, 14.1965,
7.4347

■ 69.5193, 83.1505,
95.8086

■ 21.9384, 12.4007,
4.6893

■ 74.3036, 89.3049,
107.9291

■ 21.1108, 11.2740,
2.7841

■ 20.6532, 10.6878,
1.6171

■ 20.5908, 10.6037,
1.4708

Harmonies

Analogous

The Analogous color harmony consists of three colors that are next to each other on the color wheel.



37.8357, 35.7476, 42.1280



37.8855, 35.7476, 36.3557



36.8592, 35.7476, 31.7466

Triad

The Triadic color harmony groups three colors that are evenly spaced from another and form a triangle on the color wheel.



37.8855, 35.7476, 36.3557



31.3689, 35.7476, 31.4315



32.8989, 35.7476, 50.5826

Complementary

The Complementary color scheme is a pair of colors which are on the opposite of each other on the color wheel.



37.8855, 35.7476, 36.3557



39.5604, 45.7745, 52.1000

Split Complementary

Split-complementary colors differ from the complementary color scheme. The scheme consists of three colors, the original color and two neighbors of the complement color.



31.2492, 35.7476, 47.1069



37.8855, 35.7476, 36.3557



30.3900, 35.7476, 35.8849

Square

The Square scheme is like the rectangle color scheme, but the four colors are evenly spaced on the color wheel.



37.8855, 35.7476, 36.3557



33.0683, 35.7476, 29.0995



30.3470, 35.7476, 41.6085



34.9022, 35.7476, 50.7407

Rectangle

The Rectangle color scheme consists of four colors that form a rectangle on the color wheel.



37.8855, 35.7476, 36.3557



35.7255, 35.7476, 29.7939



30.3470, 35.7476, 41.6085



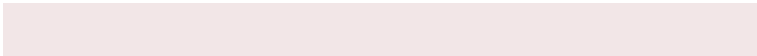
32.2865, 35.7476, 49.7491

Sweetspot

The Sweet Spot groups the original color and five complimentary colors.



37.8865, 35.7492, 36.3564



79.4917, 81.3728, 87.2701



40.0334, 36.5130, 51.9517



17.3551, 17.6951, 18.9334



90.7827, 95.5105, 104.0109



18.6292, 19.5994, 21.3438

Same Dimension

The Same Dimension uses a secret algorithm to generate beautiful new colors.



37.8865, 35.7492, 36.3564



64.5903, 59.1768, 58.8525



39.9899, 40.3571, 35.8211



9.5634, 9.5497, 10.0899



14.1991, 7.3108, 1.0759



0.5679, 0.2910, 0.1037

Inverse Universe

The Inverse Universe completely reimagines the original color for something new.



37.8865, 35.7492, 36.3564



64.5903, 59.1768, 58.8525



37.1283, 40.4023, 52.8555



9.5634, 9.5497, 10.0899



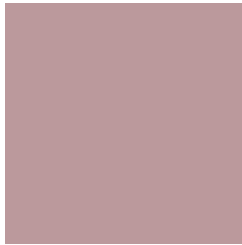
14.1991, 7.3108, 1.0759



0.5679, 0.2910, 0.1037

Previews

White Background



This preview shows how the XYZ color 37.8855, 35.7476, 36.3557 looks on a white background.

Color Contrast Check

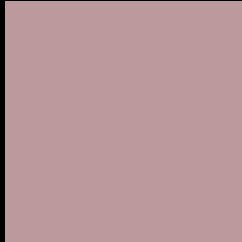
Large Text (above 18pt) WCAG AA × Fail

Any Text WCAG AA × Fail

Large Text (above 18pt) WCAG AAA × Fail

Any Text WCAG AAA × Fail

Black Background



This preview shows how the XYZ color 37.8855, 35.7476, 36.3557 looks on a black background.

Color Contrast Check

Large Text (above 18pt) WCAG AA ✓ Pass

Any Text WCAG AA ✓ Pass

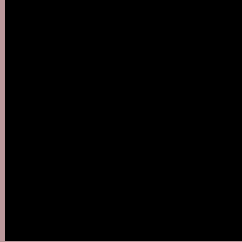
Large Text (above 18pt) WCAG AAA ✓ Pass

Any Text WCAG AAA ✓ Pass

If you want to check with other color combinations, try the [Color Contrast Checker](#).

XYZ 37.8855, 35.7476, 36.3557

Background



This preview shows how black text looks on a background with the XYZ color 37.8855, 35.7476, 36.3557.



This preview shows how white text looks on a background with the XYZ color 37.8855, 35.7476,

Color Blindness Simulation

Color vision deficiency is a very complex topic, and I could not describe the different causes any better than Wikipedia does, so if you want to learn more, you should check out their [article about color blindness](#).

Dichromacy



Original Color

37.8855, 35.7476, 36.3557

Protanopia

34.3999, 35.9203, 38.3780

Deuteranopia

36.3953, 35.7272, 35.9881



Tritanopia

38.6681, 35.8282, 39.9995

Trichromacy



Original Color

37.8855, 35.7476, 36.3557

Protanomaly

35.4981, 35.7276, 37.8260

Deuteranomaly

36.9291, 35.7543, 35.9652

Tritanomaly

38.4003, 35.7210, 38.5892

Monochromacy



Original Color

37.8855, 35.7476, 36.3557

Achromatopsia

35.2861, 37.1238, 40.4278

Achromatomaly

36.0171, 36.4855, 38.8623

CSS Examples

Text

The CSS property to change the color of the text to XYZ 37.8855, 35.7476, 36.3557 is called "color". The color property can be set on classes, ids or directly on the HTML element.

This example shows how text in the color `rgb(187, 153, 156)` looks like.

```
.text, #text, p{  
    color:rgb(187, 153, 156)  
}
```

If you want to add a text shadow in that color use the text-shadow property, you can generate a text shadow directly with our [CSS Text Shadow Generator](#).

Here you see how black text with a 4 pixel rgb(187, 153, 156) colored shadow looks like.

```
.shadow{ text-shadow: 4px 4px 2px rgb(187, 153, 156) }
```

Border

The CSS property to change the border of an element to XYZ 37.8855, 35.7476, 36.3557 is called "border". The border property can be set on classes, ids or directly on the HTML element.

This example shows the color as border, it can be applied via the CSS property "border" or "border-color".

```
.border, #border, table{ border:4px solid rgb(187, 153, 156) }
```


If only the border color should be changed use the property `border-color`.

```
.border{ border-color:rgb(187, 153, 156) }
```

If you want to add a box shadow in that color use:

Here you see how a box with a 4 pixel `rgb(187, 153, 156)` colored shadow looks like.

```
.boxshadow{ -moz-box-shadow:4px 4px 4px  
4px rgb(187, 153, 156); -webkit-box-  
shadow:4px 4px 4px 4px rgb(187, 153, 156);  
box-shadow:4px 4px 4px 4px rgb(187, 153,  
156) }
```

Background

The CSS property to change the background color of an element to XYZ 37.8855, 35.7476, 36.3557 is called "background". The background property can be set on classes, ids or directly on the HTML element.

```
.background, #background, body{  
background: rgb(187, 153, 156) }
```

If only the background color should be changed can be used:

```
.background{ background-color: rgb(187,  
153, 156) }
```

This example shows the color as background, it is applied via the CSS property "background".

To optimize and compress your CSS code, you can use our [online CSS compressor and optimizer](#) based on csstidy. If you want to create a linear or radial gradient as background or border, check our [CSS Gradient Generator](#).

Hey! You found this booklet interesting? Support Converting Colors with the new Membership Option!

The pro membership hides all ads, plus gives you double the colors in the color bucket, and more awesome pro features!

[Learn more, Memberships starting at \\$2.50/m!](#)

**Follow me
on Twitter!**

@ConvertingColor