

Converting Colors

XYZ(37.7999, 37.3357, 19.6010)

Have a look what the booklet for
XYZ(37.7999, 37.3357, 19.6010)
contains.

XYZ(37.7521, 37.2936, 19.6766)	3
<i>Conversions</i>	4
<i>Details</i>	6
<i>Harmonies</i>	12
<i>Previews</i>	24
<i>Color Blindness Simulation</i>	28
<i>CSS Examples</i>	31

Color

**XYZ(37.7521, 37.2936,
19.6766)**

Conversions

Conversions Part 1

Format	Color
Hex	C49E6D
RGB	196, 158, 109
RGB Percent	77%, 62%, 43%
CMY	0.2314, 0.3804, 0.5725
CMYK	0.00, 0.19, 0.44, 0.23
HSL	34°, 42%, 60%
HSV	34°, 44%, 77%
XYZ	37.7521, 37.2936, 19.6766
YIQ	163.7760, 38.3770, -7.1830

Conversions

Conversions Part 2

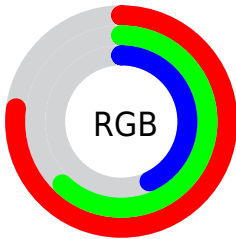
Format	Color
RYB	176, 196, 109
Decimal	12885613
CIELab	67.50, 7.64, 30.89
CIELCh	67, 31.817, 76.106
Yxy	37.2936, 0.3986, 0.3937
Android (android.graphics.Color)	4291075693 (0xFFC49E6D)
YUV	163.7760, -27.0046, 28.2604
Hunter-Lab	61.0685, 3.4776, 23.6444

Details

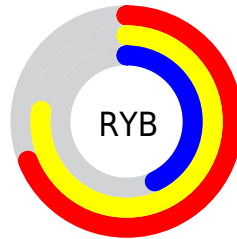
The XYZ color **37.7521, 37.2936, 19.6766** is a light color, and the websafe version is hex **CC9966**. A complement of this color would be **26.7037, 28.1030, 56.2414**, and the grayscale version is **35.2924, 37.1303, 40.4349**.

A 20% lighter version of the original color is **71.1003, 71.2325, 43.7201**, and **16.8885, 16.4171, 6.5537** is the 20% darker color. If you saturate the color by 10%, you get **35.4030, 34.0998, 14.2558**, and if you desaturate by 10%, it is **40.4400, 40.7884, 26.3718**.

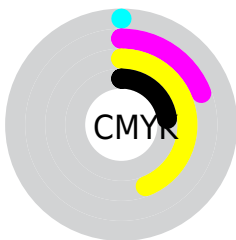
Distribution



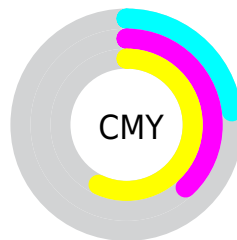
- Red (77%)
- Green (62%)
- Blue (43%)



- Red (69%)
- Yellow (77%)
- Blue (43%)



- Cyan (0%)
- Magenta (19%)
- Yellow (44%)
- Black (23%)



- Cyan (23%)
- Magenta (38%)
- Yellow (57%)

Brightness & Saturation Gradients

These gradients show how the XYZ color 37.7521, 37.2936, 19.6766 changes by changing the brightness by 10 percent. The first figure shows a shift by +10% for each color and the second figure -10%.

Similar to the brightness gradients but the following saturation gradients show a change of the XYZ color 37.7521, 37.2936, 19.6766 by changing the saturation by 10% instead.

■ 37.7521, 37.2936,
19.6766

■ 37.7521, 37.2936,
19.6766

327.8546,
334.5799, 262.7050

■ 25.9667, 25.4349,
11.9784

■ 71.0344, 71.0241,
43.7261

■ 16.9313, 16.4014,
6.6066

■ 93.2619, 93.6647,
60.9146

■ 10.2805, 9.8086,
3.1426

■ 119.7009,
120.6681, 82.1036

■ 5.6490, 5.2722,
1.1679

■ 150.7167,
152.4186, 107.7116

■ 2.6715, 2.4079,
0.0000

186.6746,
189.3006, 138.1572

■ 0.9825, 0.8299,
0.0000

227.9400,

■ 0.0000, 0.0000,

231.6986, 173.8589

0.0000

274.8782,
279.9969, 215.2354

■ 37.7521, 37.2936,
19.6766

■ 37.7521, 37.2936,
19.6766

■ 35.4030, 34.0998,
14.2558

■ 40.4400, 40.7884,
26.3718

■ 33.3721, 31.1914,
10.0232

■ 43.4804, 44.5888,
34.4155

■ 31.6405, 28.5587,
6.8852

■ 46.8893, 48.7056,
43.8787

■ 30.1853, 26.1892,
4.7331

■ 50.6810, 53.1476,
54.8267

■ 28.9795, 24.0684,
3.4349

■ 54.8686, 57.9230,
67.3207

■ 28.3842, 22.9743,
2.9385

■ 59.4650, 63.0397,
81.4186

■ 64.4821, 68.5054,
97.1752

■ 68.1431, 73.6121,
105.2248

■ 70.5358, 78.3975,
106.0223

Harmonies

Analogous

The Analogous color harmony consists of three colors that are next to each other on the color wheel.



42.3721, 37.2936, 24.1303



37.7521, 37.2936, 19.6766



32.9018, 37.2936, 19.8431

Triad

The Triadic color harmony groups three colors that are evenly spaced from another and form a triangle on the color wheel.



37.7521, 37.2936, 19.6766



27.1598, 37.2936, 48.5430



42.6619, 37.2936, 62.2800

Complementary

The Complementary color scheme is a pair of colors which are on the opposite of each other on the color wheel.



37.7521, 37.2936, 19.6766



26.7037, 28.1030, 56.2414

Split Complementary

Split-complementary colors differ from the complementary color scheme. The scheme consists of three colors, the original color and two neighbors of the complement color.



38.1190, 37.2936, 72.3550



37.7521, 37.2936, 19.6766



29.3198, 37.2936, 63.2628

Square

The Square scheme is like the rectangle color scheme, but the four colors are evenly spaced on the color wheel.



37.7521, 37.2936, 19.6766



27.0812, 37.2936, 34.4784



33.2366, 37.2936, 72.7513



45.3781, 37.2936, 47.4206

Rectangle

The Rectangle color scheme consists of four colors that form a rectangle on the color wheel.



37.7521, 37.2936, 19.6766



30.1901, 37.2936, 22.5069



33.2366, 37.2936, 72.7513



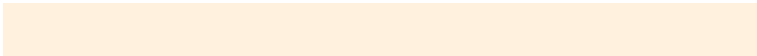
41.2800, 37.2936, 66.4744

Sweetspot

The Sweet Spot groups the original color and five complimentary colors.



37.7530, 37.2954, 19.6773



85.7188, 89.1541, 81.6925



33.5909, 24.8162, 31.0991



18.0344, 18.7106, 16.5985



0.0000, 0.0000, 0.0000



20.3446, 21.4041, 23.3091

Same Dimension

The Same Dimension uses a secret algorithm to generate beautiful new colors.



37.7530, 37.2954, 19.6773



64.3556, 62.0815, 26.3126



44.1499, 51.7447, 22.1292



10.5333, 10.9980, 10.6295



18.3251, 14.9360, 1.9171



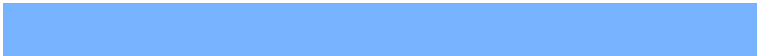
0.8594, 0.7805, 0.1054

Inverse Universe

The Inverse Universe completely reimagines the original color for something new.



26.7037, 28.1030, 56.2414



41.8698, 43.3920, 100.7765



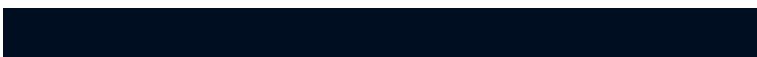
22.2879, 18.4572, 54.6123



9.8821, 10.4555, 12.7821



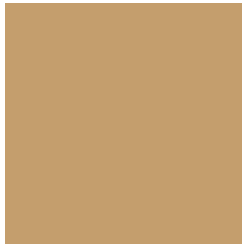
8.6024, 6.9613, 34.4469



0.4402, 0.4377, 1.5112

Previews

White Background



This preview shows how the XYZ color 37.7521, 37.2936, 19.6766 looks on a white background.

Color Contrast Check

Large Text (above 18pt) WCAG AA × Fail

Any Text WCAG AA × Fail

Large Text (above 18pt) WCAG AAA × Fail

Any Text WCAG AAA × Fail

Black Background



This preview shows how the XYZ color 37.7521, 37.2936, 19.6766 looks on a black background.

Color Contrast Check

Large Text (above 18pt) WCAG AA ✓ Pass

Any Text WCAG AA ✓ Pass

Large Text (above 18pt) WCAG AAA ✓ Pass

Any Text WCAG AAA ✓ Pass

If you want to check with other color combinations, try the [Color Contrast Checker](#).

XYZ 37.7521, 37.2936, 19.6766

Background



This preview shows how black text looks on a background with the XYZ color 37.7521, 37.2936, 19.6766.

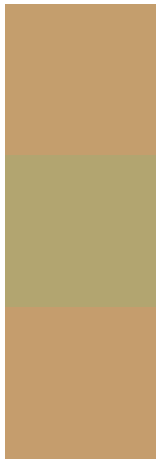


This preview shows how white text looks on a background with the XYZ color 37.7521, 37.2936,

Color Blindness Simulation

Color vision deficiency is a very complex topic, and I could not describe the different causes any better than Wikipedia does, so if you want to learn more, you should check out their [article about color blindness](#).

Dichromacy



Original Color

37.7521, 37.2936, 19.6766

Protanopia

34.7399, 37.5451, 20.7452

Deuteranopia

37.8432, 37.0884, 19.6322



Tritanopia

41.7649, 37.1951, 39.6285

Trichromacy



Original Color

37.7521, 37.2936, 19.6766

Protanomaly

35.7972, 37.3026, 20.3523

Deuteranomaly

37.8432, 37.0884, 19.6322

Tritanomaly

40.0667, 37.2365, 31.0622

Monochromacy



Original Color

37.7521, 37.2936, 19.6766

Achromatopsia

35.2861, 37.1238, 40.4278

Achromatomaly

35.8589, 37.0844, 31.6536

CSS Examples

Text

The CSS property to change the color of the text to XYZ 37.7521, 37.2936, 19.6766 is called "color". The color property can be set on classes, ids or directly on the HTML element.

This example shows how text in the color `rgb(196, 158, 109)` looks like.

```
.text, #text, p{  
    color:rgb(196, 158, 109)  
}
```

If you want to add a text shadow in that color use the text-shadow property, you can generate a text shadow directly with our [CSS Text Shadow Generator](#).

Here you see how black text with a 4 pixel rgb(196, 158, 109) colored shadow looks like.

```
.shadow{ text-shadow: 4px 4px 2px rgb(196, 158, 109) }
```

Border

The CSS property to change the border of an element to XYZ 37.7521, 37.2936, 19.6766 is called "border". The border property can be set on classes, ids or directly on the HTML element.

This example shows the color as border, it can be applied via the CSS property "border" or "border-color".

```
.border, #border, table{ border:4px solid rgb(196, 158, 109) }
```


If only the border color should be changed use the property `border-color`.

```
.border{ border-color:rgb(196, 158, 109) }
```

If you want to add a box shadow in that color use:

Here you see how a box with a 4 pixel `rgb(196, 158, 109)` colored shadow looks like.

```
.boxshadow{ -moz-box-shadow:4px 4px 4px  
4px rgb(196, 158, 109); -webkit-box-  
shadow:4px 4px 4px 4px rgb(196, 158, 109);  
box-shadow:4px 4px 4px 4px rgb(196, 158,  
109) }
```

Background

The CSS property to change the background color of an element to XYZ 37.7521, 37.2936, 19.6766 is called "background". The background property can be set on classes, ids or directly on the HTML element.

```
.background, #background, body{  
background: rgb(196, 158, 109) }
```

If only the background color should be changed can be used:

```
.background{ background-color: rgb(196,  
158, 109) }
```

This example shows the color as background, it is applied via the CSS property "background".

To optimize and compress your CSS code, you can use our [online CSS compressor and optimizer](#) based on csstidy. If you want to create a linear or radial gradient as background or border, check our [CSS Gradient Generator](#).

Hey! You found this booklet interesting? Support Converting Colors with the new Membership Option!

The pro membership hides all ads, plus gives you double the colors in the color bucket, and more awesome pro features!

[Learn more, Memberships starting at \\$2.50/m!](#)

**Follow me
on Twitter!**

@ConvertingColor