

Converting Colors

XYZ(37.8438, 35.3674, 37.8033)

Have a look what the booklet for
XYZ(37.8438, 35.3674, 37.8033)
contains.

XYZ(37.9798, 35.5245, 37.6560)	3
<i>Conversions</i>	4
<i>Details</i>	6
<i>Harmonies</i>	12
<i>Previews</i>	24
<i>Color Blindness Simulation</i>	28
<i>CSS Examples</i>	31

Color

**XYZ(37.9798, 35.5245,
37.6560)**

Conversions

Conversions Part 1

Format	Color
Hex	BB989F
RGB	187, 152, 159
RGB Percent	73%, 60%, 62%
CMY	0.2667, 0.4039, 0.3765
CMYK	0.00, 0.19, 0.15, 0.27
HSL	348°, 20%, 66%
HSV	348°, 19%, 73%
XYZ	37.9798, 35.5245, 37.6560
YIQ	163.2630, 18.6130, 9.5970

Conversions

Conversions Part 2

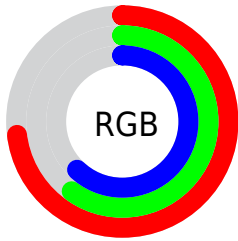
Format	Color
R_{YB}	187, 152, 159
Decimal	12294303
CIE _{Lab}	66.15, 14.16, 1.26
CIE _{LCh}	66, 14.217, 5.090
Y _{xy}	35.5245, 0.3417, 0.3196
Android (android.graphics.Color)	4290484383 (0xFFBB989F)
Y _{UV}	163.2630, -2.1017, 20.8173
Hunter-Lab	59.6024, 9.4393, 4.2631

Details

The XYZ color **37.9798, 35.5245, 37.6560** is a light color, and the websafe version is hex **CC9999**. A complement of this color would be **38.9589, 45.5123, 49.9138**, and the grayscale version is **34.9413, 36.7610, 40.0327**.

A 20% lighter version of the original color is **71.1711, 68.0523, 73.0026**, and **17.0333, 15.3766, 16.2576** is the 20% darker color. If you saturate the color by 10%, you get **33.9601, 29.4383, 30.2936**, and if you desaturate by 10%, it is **42.6372, 42.6338, 46.0072**.

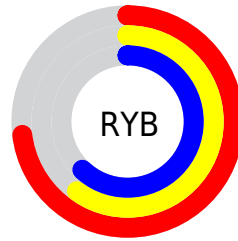
Distribution



Red (73%)

Green (60%)

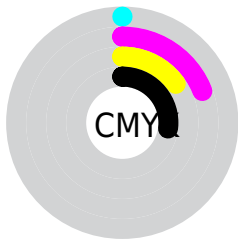
Blue (62%)



Red (73%)

Yellow (60%)

Blue (62%)

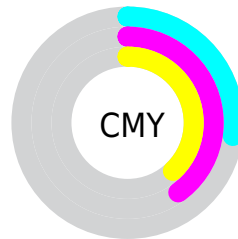


Cyan (0%)

Magenta (19%)

Yellow (15%)

Black (27%)



Cyan (27%)


Magenta (40%)


Yellow (38%)

Brightness & Saturation Gradients


These gradients show how the XYZ color 37.9798, 35.5245, 37.6560 changes by changing the brightness by 10 percent. The first figure shows a shift by +10% for each color and the second figure -10%.


Similar to the brightness gradients but the following saturation gradients show a change of the XYZ color 37.9798, 35.5245, 37.6560 by changing the saturation by 10% instead.


 37.9798, 35.5245,
37.6560


 37.9798, 35.5245,
37.6560

328.8157,
326.8774, 351.3958

 26.1442, 24.0672,
25.4161


 71.3813, 68.2975,
72.7781

 17.0648, 15.3835,
16.1655


 93.6778, 90.3820,
96.4974

 10.3763, 9.0890,
9.4857


120.1920,
116.7777, 124.8802

 5.7133, 4.7992,
4.9582

151.2893,
147.8689, 158.3450

 2.7105, 2.1300,
2.1644

187.3349,
184.0401, 197.3105

 1.0026, 0.6814,
0.6537

228.6943,

 0.0000, 0.0000,

225.6756, 242.1951

0.0000

275.7327,
273.1600, 293.4173

■ 37.9798, 35.5245,
37.6560

■ 37.9798, 35.5245,
37.6560

■ 33.9601, 29.4383,
30.2936

■ 42.6372, 42.6338,
46.0072

■ 30.5471, 24.3234,
23.8809

■ 47.9556, 50.8053,
55.3798

■ 27.7118, 20.1307,
18.3793

■ 53.9606, 60.0819,
65.8079

■ 25.4214, 16.8051,
13.7470

■ 60.6756, 70.5029,
77.3230

■ 23.6401, 14.2852,
9.9385

■ 68.1230, 82.1052,
89.9555

■ 22.3273, 12.5019,
6.9043

■ 73.3168, 88.9101,
102.7322

■ 21.4360, 11.3739,
4.5889

■ 74.3037, 89.3049,
107.9291

■ 20.8912, 10.7656,
2.9232

■ 20.8337, 10.7009,
2.7495

Harmonies

Analogous

The Analogous color harmony consists of three colors that are next to each other on the color wheel.



37.5893, 35.5245, 43.7960



37.9798, 35.5245, 37.6560



37.2031, 35.5245, 32.3637

Triad

The Triadic color harmony groups three colors that are evenly spaced from another and form a triangle on the color wheel.



37.9798, 35.5245, 37.6560



31.4807, 35.5245, 29.9114



32.0809, 35.5245, 50.2342

Complementary

The Complementary color scheme is a pair of colors which are on the opposite of each other on the color wheel.



37.9798, 35.5245, 37.6560



38.9589, 45.5123, 49.9138

Split Complementary

Split-complementary colors differ from the complementary color scheme. The scheme consists of three colors, the original color and two neighbors of the complement color.



30.5455, 35.5245, 45.7692



37.9798, 35.5245, 37.6560



30.2092, 35.5245, 33.9790

Square

The Square scheme is like the rectangle color scheme, but the four colors are evenly spaced on the color wheel.



37.9798, 35.5245, 37.6560



33.4055, 35.5245, 28.2004



29.8741, 35.5245, 39.7227



34.1271, 35.5245, 51.4794

Rectangle

The Rectangle color scheme consists of four colors that form a rectangle on the color wheel.



37.9798, 35.5245, 37.6560



36.1462, 35.5245, 29.8937



29.8741, 35.5245, 39.7227



31.4907, 35.5245, 49.0388

Sweetspot

The Sweet Spot groups the original color and five complimentary colors.



37.9808, 35.5261, 37.6567



78.7392, 79.9998, 86.6123



39.0215, 35.7493, 51.8578



17.2071, 17.4140, 18.8389



90.7827, 95.5105, 104.0109



18.6292, 19.5994, 21.3438

Same Dimension

The Same Dimension uses a secret algorithm to generate beautiful new colors.



37.9808, 35.5261, 37.6567



65.2715, 59.4492, 62.4394



39.1708, 38.8504, 35.1421



9.6061, 9.5667, 10.3146



14.3756, 7.3814, 2.0057



0.5866, 0.2985, 0.2024

Inverse Universe

The Inverse Universe completely reimagines the original color for something new.



37.9808, 35.5261, 37.6567



65.2715, 59.4492, 62.4394



37.5434, 41.5116, 53.0480



9.6061, 9.5667, 10.3146



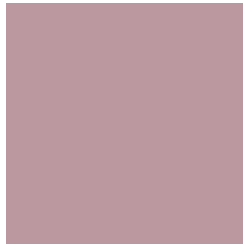
14.3756, 7.3814, 2.0057



0.5866, 0.2985, 0.2024

Previews

White Background



This preview shows how the XYZ color 37.9798, 35.5245, 37.6560 looks on a white background.

Color Contrast Check

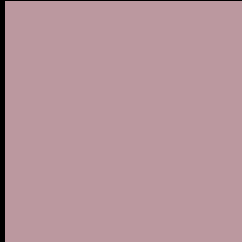
Large Text (above 18pt) WCAG AA × Fail

Any Text WCAG AA × Fail

Large Text (above 18pt) WCAG AAA × Fail

Any Text WCAG AAA × Fail

Black Background



This preview shows how the XYZ color 37.9798, 35.5245, 37.6560 looks on a black background.

Color Contrast Check

Large Text (above 18pt) WCAG AA ✓ Pass

Any Text WCAG AA ✓ Pass

Large Text (above 18pt) WCAG AAA ✓ Pass

Any Text WCAG AAA ✓ Pass

If you want to check with other color combinations, try the [Color Contrast Checker](#).

XYZ 37.9798, 35.5245, 37.6560

Background



This preview shows how black text looks on a background with the XYZ color 37.9798, 35.5245, 37.6560.



This preview shows how white text looks on a background with the XYZ color 37.9798, 35.5245,

37.6560.

Color Blindness Simulation

Color vision deficiency is a very complex topic, and I could not describe the different causes any better than Wikipedia does, so if you want to learn more, you should check out their [article about color blindness](#).

Dichromacy



Original Color

37.9798, 35.5245, 37.6560

Protanopia

34.3759, 35.6085, 40.1833

Deuteranopia

36.1915, 35.5927, 37.3103



Tritanopia

38.4165, 35.4689, 39.4717

Trichromacy



Original Color

37.9798, 35.5245, 37.6560

Protanomaly

35.5918, 35.4932, 39.1574

Deuteranomaly

36.9490, 35.7351, 37.2979

Tritanomaly

38.3272, 35.4332, 39.0016

Monochromacy



Original Color

37.9798, 35.5245, 37.6560

Achromatopsia

34.8123, 36.6253, 39.8849

Achromatomaly

35.9330, 36.1756, 39.2711

CSS Examples

Text

The CSS property to change the color of the text to XYZ 37.9798, 35.5245, 37.6560 is called "color". The color property can be set on classes, ids or directly on the HTML element.

This example shows how text in the color `rgb(187, 152, 159)` looks like.

```
.text, #text, p{  
    color:rgb(187, 152, 159)  
}
```

If you want to add a text shadow in that color use the text-shadow property, you can generate a text shadow directly with our [CSS Text Shadow Generator](#).

Here you see how black text with a 4 pixel rgb(187, 152, 159) colored shadow looks like.

```
.shadow{ text-shadow: 4px 4px 2px rgb(187, 152, 159) }
```

Border

The CSS property to change the border of an element to XYZ 37.9798, 35.5245, 37.6560 is called "border". The border property can be set on classes, ids or directly on the HTML element.

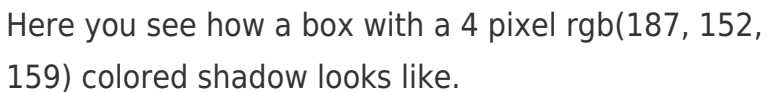
This example shows the color as border, it can be applied via the CSS property "border" or "border-color".

```
.border, #border, table{ border:4px solid rgb(187, 152, 159) }
```


If only the border color should be changed use the property `border-color`.

```
.border{ border-color:rgb(187, 152, 159) }
```

If you want to add a box shadow in that color use:



Here you see how a box with a 4 pixel `rgb(187, 152, 159)` colored shadow looks like.

```
.boxshadow{ -moz-box-shadow:4px 4px 4px 4px rgb(187, 152, 159); -webkit-box-shadow:4px 4px 4px 4px rgb(187, 152, 159); box-shadow:4px 4px 4px 4px rgb(187, 152, 159) }
```

Background

The CSS property to change the background color of an element to XYZ 37.9798, 35.5245, 37.6560 is called "background". The background property can be set on classes, ids or directly on the HTML element.

```
.background, #background, body{  
background: rgb(187, 152, 159) }
```

If only the background color should be changed can be used:

```
.background{ background-color: rgb(187,  
152, 159) }
```

This example shows the color as background, it is applied via the CSS property "background".

To optimize and compress your CSS code, you can use our [online CSS compressor and optimizer](#) based on csstidy. If you want to create a linear or radial gradient as background or border, check our [CSS Gradient Generator](#).

Hey! You found this booklet interesting? Support Converting Colors with the new Membership Option!

The pro membership hides all ads, plus gives you double the colors in the color bucket, and more awesome pro features!

[Learn more, Memberships starting at \\$2.50/m!](#)

**Follow me
on Twitter!**

@ConvertingColor