

Converting Colors

XYZ(38.1245, 36.6125, 37.0858)

Have a look what the booklet for
XYZ(38.1245, 36.6125, 37.0858)
contains.

XYZ(37.9819, 36.5255, 36.9466)	3
<i>Conversions</i>	4
<i>Details</i>	6
<i>Harmonies</i>	12
<i>Previews</i>	24
<i>Color Blindness Simulation</i>	28
<i>CSS Examples</i>	31

Color

**XYZ(37.9819, 36.5255,
36.9466)**

Conversions

Conversions Part 1

Format	Color
Hex	B99C9D
RGB	185, 156, 157
RGB Percent	73%, 61%, 62%
CMY	0.2745, 0.3882, 0.3843
CMYK	0.00, 0.16, 0.15, 0.27
HSL	358°, 17%, 67%
HSV	358°, 16%, 73%
XYZ	37.9819, 36.5255, 36.9466
YIQ	164.7850, 16.9630, 6.4590

Conversions

Conversions Part 2

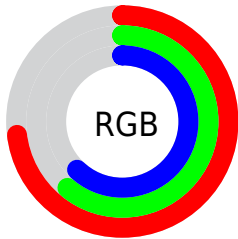
Format	Color
RYB	185, 156, 157
Decimal	12164253
CIELab	66.92, 10.87, 3.47
CIElCh	67, 11.412, 17.685
Yxy	36.5255, 0.3408, 0.3277
Android (android.graphics.Color)	4290354333 (0xFFB99C9D)
YUV	164.7850, -3.8380, 17.7286
Hunter-Lab	60.4363, 6.4168, 6.0596

Details

The XYZ color **37.9819, 36.5255, 36.9466** is a light color, and the websafe version is hex **CC9999**. A complement of this color would be **39.7124, 45.2275, 51.9863**, and the grayscale version is **35.6741, 37.5319, 40.8723**.

A 20% lighter version of the original color is **71.4536, 70.0428, 72.0410**, and **17.1688, 16.0493, 15.8286** is the 20% darker color. If you saturate the color by 10%, you get **33.6956, 30.2175, 28.5353**, and if you desaturate by 10%, it is **42.9661, 43.8716, 46.6916**.

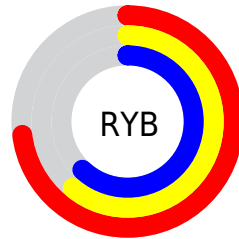
Distribution



Red (73%)

Green (61%)

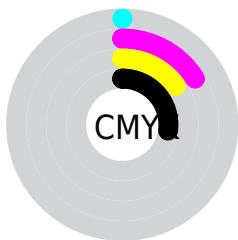
Blue (62%)



Red (73%)

Yellow (61%)

Blue (62%)

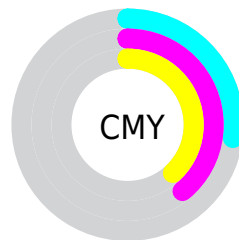


Cyan (0%)

Magenta (16%)

Yellow (15%)

Black (27%)



Cyan (27%)

Magenta (39%)

Yellow (38%)

Brightness & Saturation Gradients

These gradients show how the XYZ color 37.9819, 36.5255, 36.9466 changes by changing the brightness by 10 percent. The first figure shows a shift by +10% for each color and the second figure -10%.

Similar to the brightness gradients but the following saturation gradients show a change of the XYZ color 37.9819, 36.5255, 36.9466 by changing the saturation by 10% instead.

■ 37.9819, 36.5255,
36.9466

■ 37.9819, 36.5255,
36.9466

328.8245,
331.2516, 348.2410

■ 26.1458, 24.8403,
24.8707

■ 71.3845, 69.8424,
71.6761

■ 17.0660, 15.9581,
15.7626

■ 93.6816, 92.2429,
95.1667

■ 10.3771, 9.4945,
9.2038

120.1966,
118.9840, 123.2993

■ 5.7139, 5.0651,
4.7757

151.2945,
150.4500, 156.4924

■ 2.7109, 2.2855,
2.0598

187.3410,
187.0254, 195.1646

■ 1.0028, 0.7660,
0.5917

228.7012,

■ 0.0000, 0.0000,

229.0945, 239.7344

0.0000

275.7406,
277.0418, 290.6204

■ 37.9819, 36.5255,
36.9466

■ 37.9819, 36.5255,
36.9466

■ 33.6956, 30.2175,
28.5353

■ 42.9661, 43.8716,
46.6916

■ 30.0731, 24.8962,
21.3975

■ 48.6742, 52.2945,
57.8223

■ 27.0823, 20.5132,
15.4720

■ 55.1346, 61.8368,
70.3908

■ 24.6868, 17.0142,
10.6912

■ 62.3731, 72.5375,
84.4458

■ 22.8470, 14.3390,
6.9815

■ 70.4146, 84.4336,
100.0337

■ 21.5181, 12.4202,
4.2602

■ 73.8178, 89.0544,
107.9064

■ 20.6485, 11.1797,
2.4328

■ 20.1746, 10.5201,
1.3859

■ 20.0427, 10.3283,
1.1199

Harmonies

Analogous

The Analogous color harmony consists of three colors that are next to each other on the color wheel.



38.0676, 36.5255, 41.8361



37.9819, 36.5255, 36.9466



37.0035, 36.5255, 33.1354

Triad

The Triadic color harmony groups three colors that are evenly spaced from another and form a triangle on the color wheel.



37.9819, 36.5255, 36.9466



32.3151, 36.5255, 33.6972



34.0120, 36.5255, 49.8188

Complementary

The Complementary color scheme is a pair of colors which are on the opposite of each other on the color wheel.



37.9819, 36.5255, 36.9466



39.7124, 45.2275, 51.9863

Split Complementary

Split-complementary colors differ from the complementary color scheme. The scheme consists of three colors, the original color and two neighbors of the complement color.



32.5255, 36.5255, 47.2360



37.9819, 36.5255, 36.9466



31.5679, 36.5255, 37.7732

Square

The Square scheme is like the rectangle color scheme, but the four colors are evenly spaced on the color wheel.



37.9819, 36.5255, 36.9466



33.7160, 36.5255, 31.3692



31.6436, 36.5255, 42.7338



35.7364, 36.5255, 49.5509

Rectangle

The Rectangle color scheme consists of four colors that form a rectangle on the color wheel.



37.9819, 36.5255, 36.9466



35.9944, 36.5255, 31.5944



31.6436, 36.5255, 42.7338



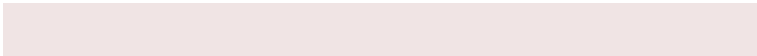
33.4690, 36.5255, 49.2469

Sweetspot

The Sweet Spot groups the original color and five complimentary colors.



37.9829, 36.5271, 36.9474



77.5197, 79.4114, 84.7335



40.3060, 37.4162, 50.9972



16.5675, 16.9068, 17.9853



88.6918, 93.3107, 101.6153



17.8044, 18.7317, 20.3988

Same Dimension

The Same Dimension uses a secret algorithm to generate beautiful new colors.



37.9829, 36.5271, 36.9474



65.0924, 61.0992, 60.4219



40.2067, 41.1104, 37.2704



9.0168, 9.0171, 9.4358



13.6527, 7.0348, 0.7919



0.4855, 0.2497, 0.0503

Inverse Universe

The Inverse Universe completely reimagines the original color for something new.



37.9829, 36.5271, 36.9474



65.0924, 61.0992, 60.4219



37.2117, 40.0581, 51.6702



9.0168, 9.0171, 9.4358



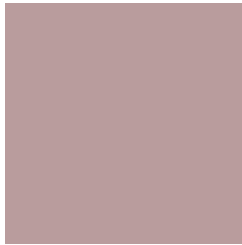
13.6527, 7.0348, 0.7919



0.4855, 0.2497, 0.0503

Previews

White Background



This preview shows how the XYZ color 37.9819, 36.5255, 36.9466 looks on a white background.

Color Contrast Check

Large Text (above 18pt) WCAG AA × Fail

Any Text WCAG AA × Fail

Large Text (above 18pt) WCAG AAA × Fail

Any Text WCAG AAA × Fail

Black Background



This preview shows how the XYZ color 37.9819, 36.5255, 36.9466 looks on a black background.

Color Contrast Check

Large Text (above 18pt) WCAG AA ✓ Pass

Any Text WCAG AA ✓ Pass

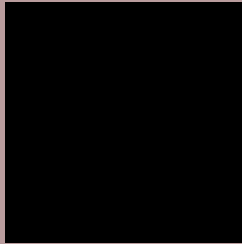
Large Text (above 18pt) WCAG AAA ✓ Pass

Any Text WCAG AAA ✓ Pass

If you want to check with other color combinations, try the [Color Contrast Checker](#).

XYZ 37.9819, 36.5255, 36.9466

Background



This preview shows how black text looks on a background with the XYZ color 37.9819, 36.5255, 36.9466.



This preview shows how white text looks on a background with the XYZ color 37.9819, 36.5255,

Color Blindness Simulation

Color vision deficiency is a very complex topic, and I could not describe the different causes any better than Wikipedia does, so if you want to learn more, you should check out their [article about color blindness](#).

Dichromacy



Original Color

37.9819, 36.5255, 36.9466

Protanopia

34.9914, 36.4857, 38.4559

Deuteranopia

37.3687, 36.7118, 37.0148



Tritanopia

38.9461, 36.6718, 41.5849

Trichromacy



Original Color

37.9819, 36.5255, 36.9466

Protanomaly

36.0624, 36.5291, 37.9510

Deuteranomaly

37.4342, 36.4933, 36.9692

Tritanomaly

38.5819, 36.5261, 39.6671

Monochromacy



Original Color

37.9819, 36.5255, 36.9466

Achromatopsia

35.7637, 37.6262, 40.9749

Achromatomaly

36.4552, 37.2200, 39.4452

CSS Examples

Text

The CSS property to change the color of the text to XYZ 37.9819, 36.5255, 36.9466 is called "color". The color property can be set on classes, ids or directly on the HTML element.

This example shows how text in the color `rgb(185, 156, 157)` looks like.

```
.text, #text, p{  
    color:rgb(185, 156, 157)  
}
```

If you want to add a text shadow in that color use the text-shadow property, you can generate a text shadow directly with our [CSS Text Shadow Generator](#).

Here you see how black text with a 4 pixel rgb(185, 156, 157) colored shadow looks like.

```
.shadow{ text-shadow: 4px 4px 2px rgb(185, 156, 157) }
```

Border

The CSS property to change the border of an element to XYZ 37.9819, 36.5255, 36.9466 is called "border". The border property can be set on classes, ids or directly on the HTML element.

This example shows the color as border, it can be applied via the CSS property "border" or "border-color".

```
.border, #border, table{ border:4px solid rgb(185, 156, 157) }
```


If only the border color should be changed use the property `border-color`.

```
.border{ border-color:rgb(185, 156, 157) }
```

If you want to add a box shadow in that color use:

Here you see how a box with a 4 pixel `rgb(185, 156, 157)` colored shadow looks like.

```
.boxshadow{ -moz-box-shadow:4px 4px 4px  
4px rgb(185, 156, 157); -webkit-box-  
shadow:4px 4px 4px 4px rgb(185, 156, 157);  
box-shadow:4px 4px 4px 4px rgb(185, 156,  
157) }
```

Background

The CSS property to change the background color of an element to XYZ 37.9819, 36.5255, 36.9466 is called "background". The background property can be set on classes, ids or directly on the HTML element.

```
.background, #background, body{  
background: rgb(185, 156, 157) }
```

If only the background color should be changed can be used:

```
.background{ background-color: rgb(185,  
156, 157) }
```

This example shows the color as background, it is applied via the CSS property "background".

To optimize and compress your CSS code, you can use our [online CSS compressor and optimizer](#) based on csstidy. If you want to create a linear or radial gradient as background or border, check our [CSS Gradient Generator](#).

Hey! You found this booklet interesting? Support Converting Colors with the new Membership Option!

The pro membership hides all ads, plus gives you double the colors in the color bucket, and more awesome pro features!

[Learn more, Memberships starting at \\$2.50/m!](#)

**Follow me
on Twitter!**

@ConvertingColor