

Converting Colors

XYZ(38.3120, 38.7786, 45.2046)

Have a look what the booklet for
XYZ(38.3120, 38.7786, 45.2046)
contains.

XYZ(38.2315, 38.8116, 45.0115)	3
<i>Conversions</i>	4
<i>Details</i>	6
<i>Harmonies</i>	12
<i>Previews</i>	24
<i>Color Blindness Simulation</i>	28
<i>CSS Examples</i>	31

Color

**XYZ(38.2315, 38.8116,
45.0115)**

Conversions

Conversions Part 1

Format	Color
Hex	ADA5AD
RGB	173, 165, 173
RGB Percent	68%, 65%, 68%
CMY	0.3216, 0.3529, 0.3216
CMYK	0.00, 0.05, 0.00, 0.32
HSL	300°, 5%, 66%
HSV	300°, 5%, 68%
XYZ	38.2315, 38.8116, 45.0115
YIQ	168.3040, 2.2000, 4.1840

Conversions

Conversions Part 2

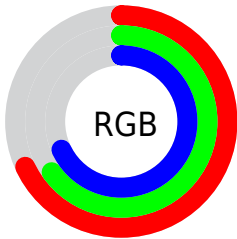
Format	Color
RYB	173, 165, 173
Decimal	11380141
CIELab	68.61, 4.37, -3.10
CIELCh	69, 5.359, 324.648
Yxy	38.8116, 0.3132, 0.3180
Android (android.graphics.Color)	4289570221 (0xFFADA5AD)
YUV	168.3040, 2.3151, 4.1184
Hunter-Lab	62.2990, 0.5184, 0.7718

Details

The XYZ color **38.2315, 38.8116, 45.0115** is a light color, and the websafe version is hex **999999**. A complement of this color would be **37.2536, 40.6041, 41.4732**, and the grayscale version is **37.3579, 39.3034, 42.8014**.

A 20% lighter version of the original color is **71.5917, 73.2818, 83.7703**, and **17.2415, 17.2557, 20.5111** is the 20% darker color. If you saturate the color by 10%, you get **35.3203, 32.9886, 44.0416**, and if you desaturate by 10%, it is **41.5671, 45.4822, 46.1238**.

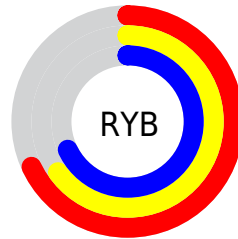
Distribution



Red (68%)

Green (65%)

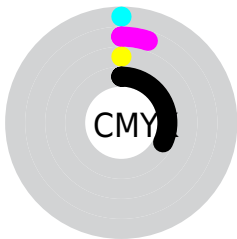
Blue (68%)



Red (68%)

Yellow (65%)

Blue (68%)

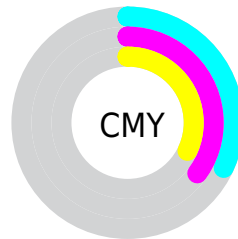


Cyan (0%)

Magenta (5%)

Yellow (0%)

Black (32%)



Cyan (32%)

Magenta (35%)

Yellow (32%)

Brightness & Saturation Gradients

These gradients show how the XYZ color 38.2315, 38.8116, 45.0115 changes by changing the brightness by 10 percent. The first figure shows a shift by +10% for each color and the second figure -10%.

Similar to the brightness gradients but the following saturation gradients show a change of the XYZ color 38.2315, 38.8116, 45.0115 by changing the saturation by 10% instead.

■ 38.2315, 38.8116,
45.0115

■ 38.2315, 38.8116,
45.0115

329.8757,
341.0888, 382.9816

■ 26.3404, 26.6132,
31.1235

■ 71.7644, 73.3504,
84.0563

■ 17.2125, 17.2829,
20.4336

■ 94.1370, 96.4596,
110.0502

■ 10.4824, 10.4364,
12.5234

120.7342,
123.9746, 140.9164

■ 5.7846, 5.6893,
6.9744

151.9212,
156.2796, 177.0735

■ 2.7540, 2.6571,
3.3679

188.0636,
193.7591, 218.9400

■ 1.0250, 0.9554,
1.2854

229.5265,

■ 0.0000, 0.0000,

236.7976, 266.9345

0.0498

276.6755,
285.7794, 321.4755

■ 0.0000, 0.0000,
0.0000

■ 38.2315, 38.8116,
45.0115

■ 38.2315, 38.8116,
45.0115

■ 35.3203, 32.9886,
44.0416

■ 41.5671, 45.4822,
46.1238

■ 32.8132, 27.9744,
43.2059

■ 45.3395, 53.0270,
47.3813

■ 30.6934, 23.7349,
42.4993

■ 49.5650, 61.4780,
48.7898

■ 28.9417, 20.2315,
41.9154

■ 54.2579, 70.8637,
50.3541

■ 27.5370, 17.4221,
41.4472

■ 59.4318, 81.2116,
52.0787

■ 26.4563, 15.2607,
41.0869

■ 60.5368, 83.4216,
52.4471

■ 25.6738, 13.6957,
40.8261

■ 60.5368, 83.4216,
52.4471

■ 25.1596, 12.6673,
40.6547

■ 60.5368, 83.4216,
52.4471

■ 24.8776, 12.1034,
40.5607

■ 60.5368, 83.4216,
52.4471

Harmonies

Analogous

The Analogous color harmony consists of three colors that are next to each other on the color wheel.



37.5716, 38.8116, 46.6349



38.2315, 38.8116, 45.0115



38.5321, 38.8116, 42.6951

Triad

The Triadic color harmony groups three colors that are evenly spaced from another and form a triangle on the color wheel.



38.2315, 38.8116, 45.0115



37.0411, 38.8116, 37.7900



35.4310, 38.8116, 44.2313

Complementary

The Complementary color scheme is a pair of colors which are on the opposite of each other on the color wheel.



38.2315, 38.8116, 45.0115



37.2536, 40.6041, 41.4732

Split Complementary

Split-complementary colors differ from the complementary color scheme. The scheme consists of three colors, the original color and two neighbors of the complement color.



35.2938, 38.8116, 41.8263



38.2315, 38.8116, 45.0115



36.2153, 38.8116, 38.1662

Square

The Square scheme is like the rectangle color scheme, but the four colors are evenly spaced on the color wheel.



38.2315, 38.8116, 45.0115



37.8382, 38.8116, 38.5735



35.5788, 38.8116, 39.6215



35.9564, 38.8116, 46.1725

Rectangle

The Rectangle color scheme consists of four colors that form a rectangle on the color wheel.



38.2315, 38.8116, 45.0115



38.4850, 38.8116, 41.0925



35.5788, 38.8116, 39.6215



35.3383, 38.8116, 43.4479

Sweetspot

The Sweet Spot groups the original color and five complimentary colors.



38.2326, 38.8133, 45.0123



70.5362, 73.6403, 81.3021



36.5408, 37.9768, 44.9401



15.3363, 16.0181, 17.6712



82.5889, 86.8899, 94.6231



15.4596, 16.2647, 17.7123

Same Dimension

The Same Dimension uses a secret algorithm to generate beautiful new colors.



38.2326, 38.8133, 45.0123



67.6518, 67.8716, 80.3407



37.8639, 38.6658, 43.0706



8.5257, 8.5252, 10.1489



18.2019, 8.7433, 29.7728



0.5064, 0.2432, 0.8282

Inverse Universe

The Inverse Universe completely reimagines the original color for something new.



37.4816, 38.5129, 41.0575



65.8928, 67.1680, 71.0778



37.6108, 40.7470, 43.3545



8.2890, 8.4305, 8.9026



12.6607, 6.5268, 0.5925



0.3522, 0.1816, 0.0165

Previews

White Background



This preview shows how the XYZ color 38.2315, 38.8116, 45.0115 looks on a white background.

Color Contrast Check

Large Text (above 18pt) WCAG AA × Fail

Any Text WCAG AA × Fail

Large Text (above 18pt) WCAG AAA × Fail

Any Text WCAG AAA × Fail

Black Background



This preview shows how the XYZ color 38.2315, 38.8116, 45.0115 looks on a black background.

Color Contrast Check

Large Text (above 18pt) WCAG AA ✓ Pass

Any Text WCAG AA ✓ Pass

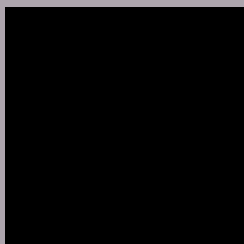
Large Text (above 18pt) WCAG AAA ✓ Pass

Any Text WCAG AAA ✓ Pass

If you want to check with other color combinations, try the [Color Contrast Checker](#).

XYZ 38.2315, 38.8116, 45.0115

Background



This preview shows how black text looks on a background with the XYZ color 38.2315, 38.8116, 45.0115.



This preview shows how white text looks on a background with the XYZ color 38.2315, 38.8116,

45.0115.

Color Blindness Simulation

Color vision deficiency is a very complex topic, and I could not describe the different causes any better than Wikipedia does, so if you want to learn more, you should check out their [article about color blindness](#).

Dichromacy



Original Color

38.2315, 38.8116, 45.0115

Protanopia

37.4246, 38.6533, 45.5327

Deuteranopia

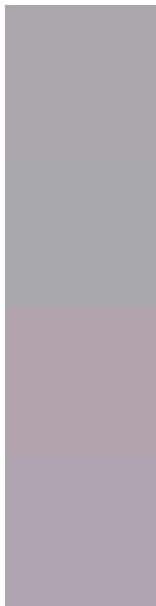
39.6164, 38.7204, 45.4302



Tritanopia

38.6668, 38.7239, 47.0315

Trichromacy



Original Color

38.2315, 38.8116, 45.0115

Protanomaly

37.8538, 38.8745, 45.5528

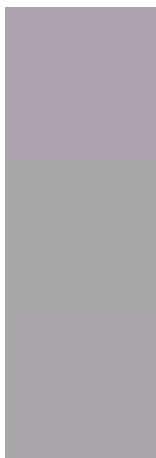
Deuteranomaly

39.0973, 38.7154, 45.4566

Tritanomaly

38.5675, 38.6842, 46.5084

Monochromacy



Original Color

38.2315, 38.8116, 45.0115

Achromatopsia

37.2190, 39.1572, 42.6422

Achromatomaly

37.6520, 39.0858, 43.5900

CSS Examples

Text

The CSS property to change the color of the text to XYZ 38.2315, 38.8116, 45.0115 is called "color". The color property can be set on classes, ids or directly on the HTML element.

This example shows how text in the color `rgb(173, 165, 173)` looks like.

```
.text, #text, p{  
    color:rgb(173, 165, 173)  
}
```

If you want to add a text shadow in that color use the text-shadow property, you can generate a text shadow directly with our [CSS Text Shadow Generator](#).

Here you see how black text with a 4 pixel rgb(173, 165, 173) colored shadow looks like.

```
.shadow{ text-shadow: 4px 4px 2px rgb(173, 165, 173) }
```

Border

The CSS property to change the border of an element to XYZ 38.2315, 38.8116, 45.0115 is called "border". The border property can be set on classes, ids or directly on the HTML element.

This example shows the color as border, it can be applied via the CSS property "border" or "border-color".

```
.border, #border, table{ border:4px solid rgb(173, 165, 173) }
```


If only the border color should be changed use the property `border-color`.

```
.border{ border-color:rgb(173, 165, 173) }
```

If you want to add a box shadow in that color use:

Here you see how a box with a 4 pixel `rgb(173, 165, 173)` colored shadow looks like.

```
.boxshadow{ -moz-box-shadow:4px 4px 4px  
4px rgb(173, 165, 173); -webkit-box-  
shadow:4px 4px 4px 4px rgb(173, 165, 173);  
box-shadow:4px 4px 4px 4px rgb(173, 165,  
173) }
```

Background

The CSS property to change the background color of an element to XYZ 38.2315, 38.8116, 45.0115 is called "background". The background property can be set on classes, ids or directly on the HTML element.

```
.background, #background, body{  
background: rgb(173, 165, 173) }
```

If only the background color should be changed can be used:

```
.background{ background-color: rgb(173,  
165, 173) }
```

This example shows the color as background, it is applied via the CSS property "background".

To optimize and compress your CSS code, you can use our [online CSS compressor and optimizer](#) based on csstidy. If you want to create a linear or radial gradient as background or border, check our [CSS Gradient Generator](#).

Hey! You found this booklet interesting? Support Converting Colors with the new Membership Option!

The pro membership hides all ads, plus gives you double the colors in the color bucket, and more awesome pro features!

[Learn more, Memberships starting at \\$2.50/m!](#)

**Follow me
on Twitter!**

@ConvertingColor