

Converting Colors

XYZ(38.3473, 34.8699, 31.0153)

Have a look what the booklet for
XYZ(38.3473, 34.8699, 31.0153)
contains.

XYZ(38.3889, 34.9292, 31.1042)	3
<i>Conversions</i>	4
<i>Details</i>	6
<i>Harmonies</i>	12
<i>Previews</i>	24
<i>Color Blindness Simulation</i>	28
<i>CSS Examples</i>	31

Color

**XYZ(38.3889, 34.9292,
31.1042)**

Conversions

Conversions Part 1

Format	Color
Hex	C49490
RGB	196, 148, 144
RGB Percent	77%, 58%, 56%
CMY	0.2314, 0.4196, 0.4353
CMYK	0.00, 0.24, 0.27, 0.23
HSL	5°, 31%, 67%
HSV	5°, 27%, 77%
XYZ	38.3889, 34.9292, 31.1042
YIQ	161.8960, 29.8920, 8.9320

Conversions

Conversions Part 2

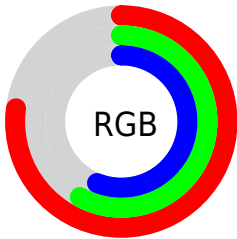
Format	Color
R _Y B	196, 148, 144
Decimal	12883088
CIE Lab	65.69, 17.47, 9.13
CIE LCh	66, 19.710, 27.599
Yxy	34.9292, 0.3676, 0.3345
Android (android.graphics.Color)	4291073168 (0xFFC49490)
YUV	161.8960, -8.8227, 29.9092
Hunter-Lab	59.1009, 12.5177, 10.1669

Details

The XYZ color **38.3889, 34.9292, 31.1042** is a light color, and the websafe version is hex **CC9999**. A complement of this color would be **40.3144, 47.6126, 59.2901**, and the grayscale version is **34.3250, 36.1125, 39.3265**.

A 20% lighter version of the original color is **71.8216, 67.2009, 62.6117**, and **17.2796, 15.0203, 12.5781** is the 20% darker color. If you saturate the color by 10%, you get **34.3998, 29.1436, 23.0142**, and if you desaturate by 10%, it is **43.0835, 41.7090, 40.7132**.

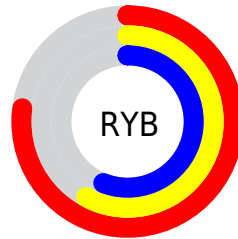
Distribution



Red (77%)

Green (58%)

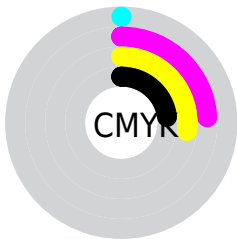
Blue (56%)



Red (77%)

Yellow (58%)

Blue (56%)

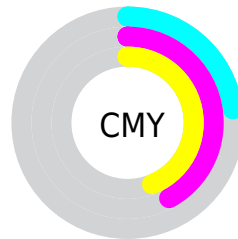


Cyan (0%)

Magenta (24%)

Yellow (27%)

Black (23%)



Cyan (23%)


Magenta (42%)


Yellow (44%)

Brightness & Saturation Gradients


These gradients show how the XYZ color 38.3889, 34.9292, 31.1042 changes by changing the brightness by 10 percent. The first figure shows a shift by +10% for each color and the second figure -10%.


Similar to the brightness gradients but the following saturation gradients show a change of the XYZ color 38.3889, 34.9292, 31.1042 by changing the saturation by 10% instead.


 38.3889, 34.9292,
31.1042


 38.3889, 34.9292,
31.1042

330.5374,
324.2557, 321.3841

 26.4632, 23.6083,
20.4191


 72.0039, 67.3761,
62.4856

 17.3050, 15.0433,
12.5129


 94.4239, 89.2709,
84.0189

 10.5488, 8.8498,
6.9673


121.0728,
115.4591, 110.0054

 5.8294, 4.6433,
3.3635

152.3159,
146.3252, 140.8636

 2.7813, 2.0396,
1.2831

188.5186,
182.2535, 177.0120

 1.0392, 0.6303,
0.0479

230.0461,

 0.0000, 0.0000,

223.6284, 218.8692

0.0000

277.2640,
270.8344, 266.8538

■ 38.3889, 34.9292,
31.1042

■ 38.3889, 34.9292,
31.1042

■ 34.3998, 29.1436,
23.0142

■ 43.0835, 41.7090,
40.7132

■ 31.0793, 24.3010,
16.3635

■ 48.5125, 49.5216,
51.9113

■ 28.3917, 20.3528,
11.0683

■ 54.7065, 58.4095,
64.7665

■ 26.2965, 17.2441,
7.0352

■ 61.6936, 68.4112,
79.3425

■ 24.7487, 14.9141,
4.1592

■ 69.5006, 79.5634,
95.6995

■ 23.6967, 13.2936,
2.3179

■ 76.5750, 90.4758,
108.0354

■ 23.0773, 12.3007,
1.3533

■ 22.9372, 12.0801,
1.1228

Harmonies

Analogous

The Analogous color harmony consists of three colors that are next to each other on the color wheel.



39.0866, 34.9292, 38.7047



38.3889, 34.9292, 31.1042



36.2769, 34.9292, 26.0813

Triad

The Triadic color harmony groups three colors that are evenly spaced from another and form a triangle on the color wheel.



38.3889, 34.9292, 31.1042



28.7110, 34.9292, 30.1021



32.9662, 34.9292, 56.3186

Complementary

The Complementary color scheme is a pair of colors which are on the opposite of each other on the color wheel.



38.3889, 34.9292, 31.1042



40.3144, 47.6126, 59.2901

Split Complementary

Split-complementary colors differ from the complementary color scheme. The scheme consists of three colors, the original color and two neighbors of the complement color.



30.3006, 34.9292, 53.1682



38.3889, 34.9292, 31.1042



27.9348, 34.9292, 37.3671

Square

The Square scheme is like the rectangle color scheme, but the four colors are evenly spaced on the color wheel.



38.3889, 34.9292, 31.1042



30.6828, 34.9292, 25.5646



28.4996, 34.9292, 45.9188



35.8495, 34.9292, 54.0088

Rectangle

The Rectangle color scheme consists of four colors that form a rectangle on the color wheel.



38.3889, 34.9292, 31.1042



34.4108, 34.9292, 24.4723



28.4996, 34.9292, 45.9188



32.0163, 34.9292, 55.8542

Sweetspot

The Sweet Spot groups the original color and five complimentary colors.



38.3898, 34.9308, 31.1049



86.2223, 87.3244, 90.6055



42.3121, 35.5121, 54.8042



18.1217, 18.2116, 18.7044



0.0000, 0.0000, 0.0000



20.3446, 21.4041, 23.3091

Same Dimension

The Same Dimension uses a secret algorithm to generate beautiful new colors.



38.3898, 34.9308, 31.1049



65.0790, 56.8074, 47.2733



42.8325, 43.8161, 32.5858



10.1341, 10.1997, 10.4965



14.7635, 7.8128, 0.7299



0.6597, 0.3812, 0.0388

Inverse Universe

The Inverse Universe completely reimagines the original color for something new.



40.3144, 47.6126, 59.2901



69.1604, 83.7263, 107.1234



35.1991, 37.3819, 57.5850



10.3000, 11.2914, 12.9214



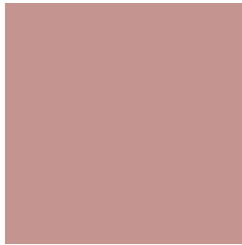
17.0360, 23.8286, 37.2581



0.7562, 1.0697, 1.6165

Previews

White Background



This preview shows how the XYZ color 38.3889, 34.9292, 31.1042 looks on a white background.

Color Contrast Check

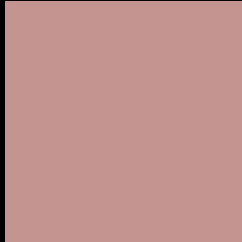
Large Text (above 18pt) WCAG AA × Fail

Any Text WCAG AA × Fail

Large Text (above 18pt) WCAG AAA × Fail

Any Text WCAG AAA × Fail

Black Background



This preview shows how the XYZ color 38.3889, 34.9292, 31.1042 looks on a black background.

Color Contrast Check

Large Text (above 18pt) WCAG AA ✓ Pass

Any Text WCAG AA ✓ Pass

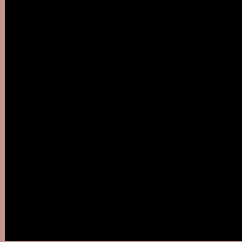
Large Text (above 18pt) WCAG AAA ✓ Pass

Any Text WCAG AAA ✓ Pass

If you want to check with other color combinations, try the [Color Contrast Checker](#).

XYZ 38.3889, 34.9292, 31.1042

Background



This preview shows how black text looks on a background with the XYZ color 38.3889, 34.9292, 31.1042.



This preview shows how white text looks on a background with the XYZ color 38.3889, 34.9292,

Color Blindness Simulation

Color vision deficiency is a very complex topic, and I could not describe the different causes any better than Wikipedia does, so if you want to learn more, you should check out their [article about color blindness](#).

Dichromacy



Original Color

38.3889, 34.9292, 31.1042

Protanopia

33.4202, 34.9976, 33.8479

Deuteranopia

35.5696, 34.9181, 30.8518



Tritanopia

39.3906, 34.8624, 36.5513

Trichromacy



Original Color

38.3889, 34.9292, 31.1042

Protanomaly

34.9711, 34.8109, 32.8930

Deuteranomaly

36.4359, 34.8787, 30.7985

Tritanomaly

39.1272, 35.0048, 34.4001

Monochromacy



Original Color

38.3889, 34.9292, 31.1042

Achromatopsia

34.3422, 36.1307, 39.3463

Achromatomaly

35.4289, 35.4792, 35.9912

CSS Examples

Text

The CSS property to change the color of the text to XYZ 38.3889, 34.9292, 31.1042 is called "color". The color property can be set on classes, ids or directly on the HTML element.

This example shows how text in the color `rgb(196, 148, 144)` looks like.

```
.text, #text, p{  
    color:rgb(196, 148, 144)  
}
```

If you want to add a text shadow in that color use the text-shadow property, you can generate a text shadow directly with our [CSS Text Shadow Generator](#).

Here you see how black text with a 4 pixel rgb(196, 148, 144) colored shadow looks like.

```
.shadow{ text-shadow: 4px 4px 2px rgb(196, 148, 144) }
```

Border

The CSS property to change the border of an element to XYZ 38.3889, 34.9292, 31.1042 is called "border". The border property can be set on classes, ids or directly on the HTML element.

This example shows the color as border, it can be applied via the CSS property "border" or "border-color".

```
.border, #border, table{ border:4px solid rgb(196, 148, 144) }
```


If only the border color should be changed use the property `border-color`.

```
.border{ border-color:rgb(196, 148, 144) }
```

If you want to add a box shadow in that color use:

Here you see how a box with a 4 pixel `rgb(196, 148, 144)` colored shadow looks like.

```
.boxshadow{ -moz-box-shadow:4px 4px 4px  
4px rgb(196, 148, 144); -webkit-box-  
shadow:4px 4px 4px 4px rgb(196, 148, 144);  
box-shadow:4px 4px 4px 4px rgb(196, 148,  
144) }
```

Background

The CSS property to change the background color of an element to XYZ 38.3889, 34.9292, 31.1042 is called "background". The background property can be set on classes, ids or directly on the HTML element.

```
.background, #background, body{  
background: rgb(196, 148, 144) }
```

If only the background color should be changed can be used:

```
.background{ background-color: rgb(196,  
148, 144) }
```

This example shows the color as background, it is applied via the CSS property "background".

To optimize and compress your CSS code, you can use our [online CSS compressor and optimizer](#) based on csstidy. If you want to create a linear or radial gradient as background or border, check our [CSS Gradient Generator](#).

Hey! You found this booklet interesting? Support Converting Colors with the new Membership Option!

The pro membership hides all ads, plus gives you double the colors in the color bucket, and more awesome pro features!

[Learn more, Memberships starting at \\$2.50/m!](#)

**Follow me
on Twitter!**

@ConvertingColor