

Converting Colors

XYZ(38.3625, 34.5691, 32.0907)

Have a look what the booklet for
XYZ(38.3625, 34.5691, 32.0907)
contains.

XYZ(38.4651, 34.7098, 32.2761)	3
<i>Conversions</i>	4
<i>Details</i>	6
<i>Harmonies</i>	12
<i>Previews</i>	24
<i>Color Blindness Simulation</i>	28
<i>CSS Examples</i>	31

Color

**XYZ(38.4651, 34.7098,
32.2761)**

Conversions

Conversions Part 1

Format	Color
Hex	C49393
RGB	196, 147, 147
RGB Percent	77%, 58%, 58%
CMY	0.2314, 0.4235, 0.4235
CMYK	0.00, 0.25, 0.25, 0.23
HSL	0°, 29%, 67%
HSV	0°, 25%, 77%
XYZ	38.4651, 34.7098, 32.2761
YIQ	161.6510, 29.2040, 10.3880

Conversions

Conversions Part 2

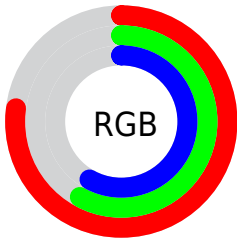
Format	Color
R _Y B	196, 147, 147
Decimal	12882835
CIE Lab	65.52, 18.45, 7.20
CIE LCh	66, 19.807, 21.323
Yxy	34.7098, 0.3648, 0.3292
Android (android.graphics.Color)	4291072915 (0xFFC49393)
YUV	161.6510, -7.2229, 30.1241
Hunter-Lab	58.9150, 13.4398, 8.7590

Details

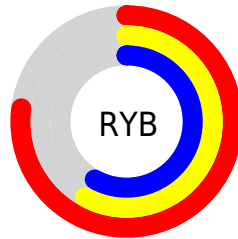
The XYZ color **38.4651, 34.7098, 32.2761** is a light color, and the websafe version is hex **CC9999**. A complement of this color would be **41.7357, 49.6668, 59.6116**, and the grayscale version is **34.2034, 35.9846, 39.1872**.

A 20% lighter version of the original color is **71.9373, 66.8730, 64.3746**, and **17.3250, 14.8915, 13.2705** is the 20% darker color. If you saturate the color by 10%, you get **34.2640, 28.5626, 23.9232**, and if you desaturate by 10%, it is **43.4494, 42.0034, 42.1836**.

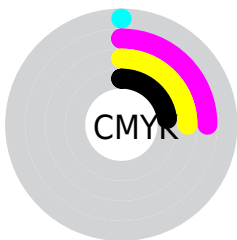
Distribution



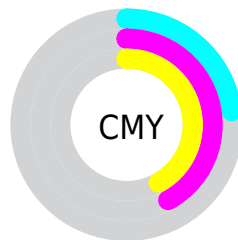
- Red (77%)
- Green (58%)
- Blue (58%)



- Red (77%)
- Yellow (58%)
- Blue (58%)



- Cyan (0%)
- Magenta (25%)
- Yellow (25%)
- Black (23%)





- Cyan (23%)
- Magenta (42%)
- Yellow (42%)

Brightness & Saturation Gradients


These gradients show how the XYZ color 38.4651, 34.7098, 32.2761 changes by changing the brightness by 10 percent. The first figure shows a shift by +10% for each color and the second figure -10%.


Similar to the brightness gradients but the following saturation gradients show a change of the XYZ color 38.4651, 34.7098, 32.2761 by changing the saturation by 10% instead.


 38.4651, 34.7098,
32.2761


 38.4651, 34.7098,
32.2761


330.8574,
323.2855, 326.9065

 26.5227, 23.4394,
21.3059


 72.1198, 67.0360,
64.3466

 17.3498, 14.9183,
13.1544

 94.5628, 88.8605,
86.2840

 10.5811, 8.7621,
7.4030


121.2367,
114.9719, 112.7142

 5.8511, 4.5863,
3.6331

152.5069,
145.7546, 144.0558

 2.7945, 2.0066,
1.4263

188.7387,
181.5929, 180.7273

 1.0461, 0.6113,
0.1621

230.2975,

 0.0000, 0.0000,

222.8712, 223.1472

0.0000

277.5486,
269.9740, 271.7341

■ 38.4651, 34.7098,
32.2761

■ 38.4651, 34.7098,
32.2761

■ 34.2640, 28.5626,
23.9232

■ 43.4494, 42.0034,
42.1836

■ 30.8035, 23.4990,
17.0441

■ 49.2508, 50.4925,
53.7168

■ 28.0418, 19.4576,
11.5540

■ 55.9047, 60.2289,
66.9448

■ 25.9311, 16.3691,
7.3583

■ 63.4436, 71.2603,
81.9322

■ 24.4182, 14.1552,
4.3511

■ 71.8982, 83.6316,
98.7402

■ 23.4413, 12.7257,
2.4094

■ 76.5750, 90.4758,
108.0354

■ 22.9252, 11.9704,
1.3837

■ 22.7652, 11.7361,
1.0654

Harmonies

Analogous

The Analogous color harmony consists of three colors that are next to each other on the color wheel.



38.8185, 34.7098, 40.2551



38.4651, 34.7098, 32.2761



36.6012, 34.7098, 26.6420

Triad

The Triadic color harmony groups three colors that are evenly spaced from another and form a triangle on the color wheel.



38.4651, 34.7098, 32.2761



28.8243, 34.7098, 28.6620



32.1561, 34.7098, 55.8895

Complementary

The Complementary color scheme is a pair of colors which are on the opposite of each other on the color wheel.



38.4651, 34.7098, 32.2761



41.7357, 49.6668, 59.6116

Split Complementary

Split-complementary colors differ from the complementary color scheme. The scheme consists of three colors, the original color and two neighbors of the complement color.



29.6257, 34.7098, 51.6884



38.4651, 34.7098, 32.2761



27.7774, 34.7098, 35.4335

Square

The Square scheme is like the rectangle color scheme, but the four colors are evenly spaced on the color wheel.



38.4651, 34.7098, 32.2761



31.0034, 34.7098, 24.7780



28.0619, 34.7098, 43.9054



35.0610, 34.7098, 54.7156

Rectangle

The Rectangle color scheme consists of four colors that form a rectangle on the color wheel.



38.4651, 34.7098, 32.2761



34.8096, 34.7098, 24.5881



28.0619, 34.7098, 43.9054



31.2362, 34.7098, 55.0391

Sweetspot

The Sweet Spot groups the original color and five complimentary colors.



38.4660, 34.7114, 32.2768



86.8760, 88.0393, 92.6501



43.1627, 36.5891, 57.0121



18.4520, 18.6347, 19.5466



0.0000, 0.0000, 0.0000



20.3446, 21.4041, 23.3091

Same Dimension

The Same Dimension uses a secret algorithm to generate beautiful new colors.



38.4660, 34.7114, 32.2768



65.3475, 56.5371, 49.8517



42.6892, 43.1577, 33.6845



10.0733, 10.0780, 10.4762



14.6276, 7.5410, 0.6846



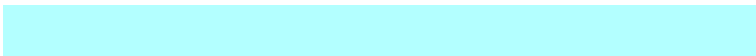
0.6320, 0.3259, 0.0296

Inverse Universe

The Inverse Universe completely reimagines the original color for something new.



41.7357, 49.6668, 59.6116



72.2831, 88.2603, 107.8340



36.6543, 39.5040, 57.9178



10.3685, 11.4283, 12.9442



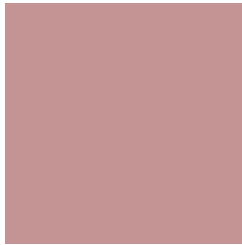
19.0837, 27.9239, 37.9407



0.8246, 1.2066, 1.6393

Previews

White Background



This preview shows how the XYZ color 38.4651, 34.7098, 32.2761 looks on a white background.

Color Contrast Check

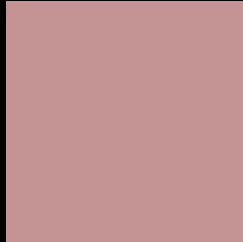
Large Text (above 18pt) WCAG AA × Fail

Any Text WCAG AA × Fail

Large Text (above 18pt) WCAG AAA × Fail

Any Text WCAG AAA × Fail

Black Background



This preview shows how the XYZ color 38.4651, 34.7098, 32.2761 looks on a black background.

Color Contrast Check

Large Text (above 18pt) WCAG AA ✓ Pass

Any Text WCAG AA ✓ Pass

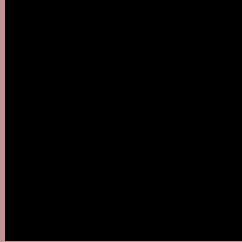
Large Text (above 18pt) WCAG AAA ✓ Pass

Any Text WCAG AAA ✓ Pass

If you want to check with other color combinations, try the [Color Contrast Checker](#).

XYZ 38.4651, 34.7098, 32.2761

Background



This preview shows how black text looks on a background with the XYZ color 38.4651, 34.7098, 32.2761.



This preview shows how white text looks on a background with the XYZ color 38.4651, 34.7098,

Color Blindness Simulation

Color vision deficiency is a very complex topic, and I could not describe the different causes any better than Wikipedia does, so if you want to learn more, you should check out their [article about color blindness](#).

Dichromacy



Original Color

38.4651, 34.7098, 32.2761

Protanopia

33.4577, 34.9887, 35.1271

Deuteranopia

35.5663, 34.8898, 32.0540



Tritanopia

39.3906, 34.8624, 36.5513

Trichromacy



Original Color

38.4651, 34.7098, 32.2761

Protanomaly

35.2118, 34.9072, 34.1601

Deuteranomaly

36.5046, 34.6476, 31.9578

Tritanomaly

39.0546, 34.7280, 34.7818

Monochromacy



Original Color

38.4651, 34.7098, 32.2761

Achromatopsia

34.3422, 36.1307, 39.3463

Achromatomaly

35.5983, 35.5469, 36.8833

CSS Examples

Text

The CSS property to change the color of the text to XYZ 38.4651, 34.7098, 32.2761 is called "color". The color property can be set on classes, ids or directly on the HTML element.

This example shows how text in the color `rgb(196, 147, 147)` looks like.

```
.text, #text, p{  
    color:rgb(196, 147, 147)  
}
```

If you want to add a text shadow in that color use the text-shadow property, you can generate a text shadow directly with our [CSS Text Shadow Generator](#).

Here you see how black text with a 4 pixel rgb(196, 147, 147) colored shadow looks like.

```
.shadow{ text-shadow: 4px 4px 2px rgb(196, 147, 147) }
```

Border

The CSS property to change the border of an element to XYZ 38.4651, 34.7098, 32.2761 is called "border". The border property can be set on classes, ids or directly on the HTML element.

This example shows the color as border, it can be applied via the CSS property "border" or "border-color".

```
.border, #border, table{ border:4px solid rgb(196, 147, 147) }
```


If only the border color should be changed use the property `border-color`.

```
.border{ border-color:rgb(196, 147, 147) }
```

If you want to add a box shadow in that color use:

Here you see how a box with a 4 pixel `rgb(196, 147, 147)` colored shadow looks like.

```
.boxshadow{ -moz-box-shadow:4px 4px 4px  
4px rgb(196, 147, 147); -webkit-box-  
shadow:4px 4px 4px 4px rgb(196, 147, 147);  
box-shadow:4px 4px 4px 4px rgb(196, 147,  
147) }
```

Background

The CSS property to change the background color of an element to XYZ 38.4651, 34.7098, 32.2761 is called "background". The background property can be set on classes, ids or directly on the HTML element.

```
.background, #background, body{  
background: rgb(196, 147, 147) }
```

If only the background color should be changed can be used:

```
.background{ background-color: rgb(196,  
147, 147) }
```

This example shows the color as background, it is applied via the CSS property "background".

To optimize and compress your CSS code, you can use our [online CSS compressor and optimizer](#) based on csstidy. If you want to create a linear or radial gradient as background or border, check our [CSS Gradient Generator](#).

Hey! You found this booklet interesting? Support Converting Colors with the new Membership Option!

The pro membership hides all ads, plus gives you double the colors in the color bucket, and more awesome pro features!

[Learn more, Memberships starting at \\$2.50/m!](#)

**Follow me
on Twitter!**

@ConvertingColor