

Converting Colors

XYZ(38.3990, 35.1519, 32.7661)

Have a look what the booklet for
XYZ(38.3990, 35.1519, 32.7661)
contains.

XYZ(38.3409, 35.1023, 32.7716)	3
<i>Conversions</i>	4
<i>Details</i>	6
<i>Harmonies</i>	12
<i>Previews</i>	24
<i>Color Blindness Simulation</i>	28
<i>CSS Examples</i>	31

Color

**XYZ(38.3409, 35.1023,
32.7716)**

Conversions

Conversions Part 1

Format	Color
Hex	C29594
RGB	194, 149, 148
RGB Percent	76%, 58%, 58%
CMY	0.2392, 0.4157, 0.4196
CMYK	0.00, 0.23, 0.24, 0.24
HSL	1°, 27%, 67%
HSV	1°, 24%, 76%
XYZ	38.3409, 35.1023, 32.7716
YIQ	162.3410, 27.1410, 9.2290

Conversions

Conversions Part 2

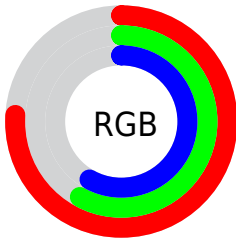
Format	Color
RYB	194, 149, 148
Decimal	12752276
CIELab	65.83, 16.73, 7.05
CIELCh	66, 18.158, 22.850
Yxy	35.1023, 0.3610, 0.3305
Android (android.graphics.Color)	4290942356 (0xFFC29594)
YUV	162.3410, -7.0701, 27.7649
Hunter-Lab	59.2472, 11.8309, 8.6778

Details

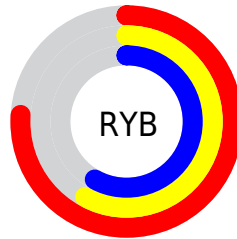
The XYZ color **38.3409, 35.1023, 32.7716** is a light color, and the websafe version is hex **CC9999**. A complement of this color would be **41.0199, 48.3297, 58.2059**, and the grayscale version is **34.5265, 36.3246, 39.5575**.

A 20% lighter version of the original color is **71.8003, 67.4854, 65.1188**, and **17.1728, 15.0874, 13.3163** is the 20% darker color. If you saturate the color by 10%, you get **34.1706, 29.0165, 24.4299**, and if you desaturate by 10%, it is **43.2597, 42.2727, 42.6334**.

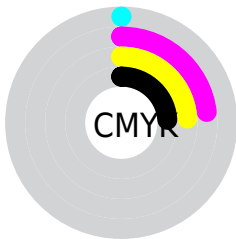
Distribution



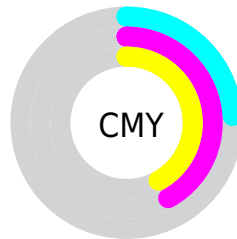
- Red (76%)
- Green (58%)
- Blue (58%)



- Red (76%)
- Yellow (58%)
- Blue (58%)



- Cyan (0%)
- Magenta (23%)
- Yellow (24%)
- Black (24%)





- Cyan (24%)
- Magenta (42%)
- Yellow (42%)

Brightness & Saturation Gradients


These gradients show how the XYZ color 38.3409, 35.1023, 32.7716 changes by changing the brightness by 10 percent. The first figure shows a shift by +10% for each color and the second figure -10%.


Similar to the brightness gradients but the following saturation gradients show a change of the XYZ color 38.3409, 35.1023, 32.7716 by changing the saturation by 10% instead.


 38.3409, 35.1023,
32.7716


 38.3409, 35.1023,
32.7716


330.3357,
325.0196, 329.2197

 26.4258, 23.7417,
21.6819


 71.9309, 67.6442,
65.1307

 17.2768, 15.1421,
13.4272


 94.3365, 89.5943,
87.2371

 10.5286, 8.9192,
7.5892


120.9696,
115.8430, 113.8528

 5.8157, 4.6885,
3.7493

152.1956,
146.7747, 145.3963

 2.7730, 2.0657,
1.4888

188.3799,
182.7739, 182.2862

 1.0349, 0.6452,
0.2096

229.8877,

 0.0000, 0.0000,

224.2248, 224.9411

0.0000

277.0846,
271.5119, 273.7794

■ 38.3409, 35.1023,
32.7716

■ 38.3409, 35.1023,
32.7716

■ 34.1706, 29.0165,
24.4299

■ 43.2597, 42.2727,
42.6334

■ 30.7094, 23.9579,
17.5305

■ 48.9581, 50.5717,
54.0831

■ 27.9189, 19.8714,
11.9926

■ 55.4690, 60.0468,
67.1875

■ 25.7554, 16.6946,
7.7258

■ 62.8225, 70.7414,
82.0084

■ 24.1706, 14.3580,
4.6295

■ 71.0472, 82.6965,
98.6048

■ 23.1089, 12.7821,
2.5874

■ 76.0583, 90.2094,
108.0112

■ 22.5037, 11.8720,
1.4597

■ 22.2942, 11.5613,
1.0565

Harmonies

Analogous

The Analogous color harmony consists of three colors that are next to each other on the color wheel.



38.7420, 35.1023, 40.0868



38.3409, 35.1023, 32.7716



36.5732, 35.1023, 27.6235

Triad

The Triadic color harmony groups three colors that are evenly spaced from another and form a triangle on the color wheel.



38.3409, 35.1023, 32.7716



29.4229, 35.1023, 29.9833



32.7264, 35.1023, 54.8122

Complementary

The Complementary color scheme is a pair of colors which are on the opposite of each other on the color wheel.



38.3409, 35.1023, 32.7716



41.0199, 48.3297, 58.2059

Split Complementary

Split-complementary colors differ from the complementary color scheme. The scheme consists of three colors, the original color and two neighbors of the complement color.



30.3477, 35.1023, 51.2305



38.3409, 35.1023, 32.7716



28.5077, 35.1023, 36.4129

Square

The Square scheme is like the rectangle color scheme, but the four colors are evenly spaced on the color wheel.



38.3409, 35.1023, 32.7716



31.4025, 35.1023, 26.1705



28.8370, 35.1023, 44.2421



35.4049, 35.1023, 53.4961

Rectangle

The Rectangle color scheme consists of four colors that form a rectangle on the color wheel.



38.3409, 35.1023, 32.7716



34.9063, 35.1023, 25.7825



28.8370, 35.1023, 44.2421



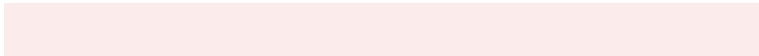
31.8672, 35.1023, 54.1266

Sweetspot

The Sweet Spot groups the original color and five complimentary colors.



38.3419, 35.1039, 32.7723



85.0268, 86.2756, 90.6010



42.4901, 36.5103, 55.3967



18.4780, 18.6866, 19.5552



0.0000, 0.0000, 0.0000



20.3446, 21.4041, 23.3091

Same Dimension

The Same Dimension uses a secret algorithm to generate beautiful new colors.



38.3419, 35.1039, 32.7723



65.7239, 58.1406, 51.8864



42.3020, 43.0242, 34.0924



10.0904, 10.1123, 10.4819



14.6655, 7.6168, 0.6972



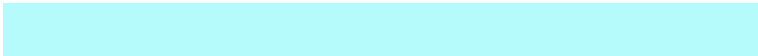
0.6399, 0.3415, 0.0322

Inverse Universe

The Inverse Universe completely reimagines the original color for something new.



41.0199, 48.3297, 58.2059



71.3462, 85.9101, 105.2917



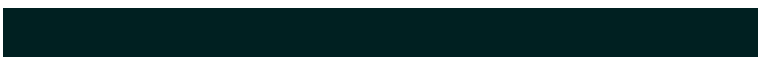
36.3693, 39.0284, 56.6557



10.3491, 11.3895, 12.9378



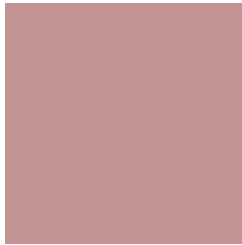
18.4838, 26.7240, 37.7407



0.8047, 1.1668, 1.6327

Previews

White Background



This preview shows how the XYZ color 38.3409, 35.1023, 32.7716 looks on a white background.

Color Contrast Check

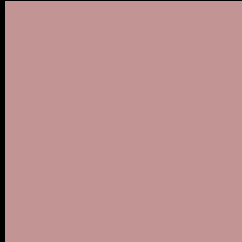
Large Text (above 18pt) WCAG AA × Fail

Any Text WCAG AA × Fail

Large Text (above 18pt) WCAG AAA × Fail

Any Text WCAG AAA × Fail

Black Background



This preview shows how the XYZ color 38.3409, 35.1023, 32.7716 looks on a black background.

Color Contrast Check

Large Text (above 18pt) WCAG AA ✓ Pass

Any Text WCAG AA ✓ Pass

Large Text (above 18pt) WCAG AAA ✓ Pass

Any Text WCAG AAA ✓ Pass

If you want to check with other color combinations, try the [Color Contrast Checker](#).

XYZ 38.3409, 35.1023, 32.7716

Background



This preview shows how black text looks on a background with the XYZ color 38.3409, 35.1023, 32.7716.



This preview shows how white text looks on a background with the XYZ color 38.3409, 35.1023,

Color Blindness Simulation

Color vision deficiency is a very complex topic, and I could not describe the different causes any better than Wikipedia does, so if you want to learn more, you should check out their [article about color blindness](#).

Dichromacy



Original Color

38.3409, 35.1023, 32.7716

Protanopia

33.9206, 35.4740, 35.6312

Deuteranopia

36.0439, 35.3730, 32.5317



Tritanopia

39.1974, 34.9727, 37.4854

Trichromacy



Original Color

38.3409, 35.1023, 32.7716

Protanomaly

35.4605, 35.2740, 34.6454

Deuteranomaly

36.9074, 35.3282, 32.4775

Tritanomaly

39.0120, 35.1485, 35.7385

Monochromacy



Original Color

38.3409, 35.1023, 32.7716

Achromatopsia

34.3422, 36.1307, 39.3463

Achromatomaly

35.5983, 35.5469, 36.8833

CSS Examples

Text

The CSS property to change the color of the text to XYZ 38.3409, 35.1023, 32.7716 is called "color". The color property can be set on classes, ids or directly on the HTML element.

This example shows how text in the color `rgb(194, 149, 148)` looks like.

```
.text, #text, p{  
    color:rgb(194, 149, 148)  
}
```

If you want to add a text shadow in that color use the text-shadow property, you can generate a text shadow directly with our [CSS Text Shadow Generator](#).

Here you see how black text with a 4 pixel rgb(194, 149, 148) colored shadow looks like.

```
.shadow{ text-shadow: 4px 4px 2px rgb(194, 149, 148) }
```

Border

The CSS property to change the border of an element to XYZ 38.3409, 35.1023, 32.7716 is called "border". The border property can be set on classes, ids or directly on the HTML element.

This example shows the color as border, it can be applied via the CSS property "border" or "border-color".

```
.border, #border, table{ border:4px solid rgb(194, 149, 148) }
```


If only the border color should be changed use the property `border-color`.

```
.border{ border-color:rgb(194, 149, 148) }
```

If you want to add a box shadow in that color use:

Here you see how a box with a 4 pixel `rgb(194, 149, 148)` colored shadow looks like.

```
.boxshadow{ -moz-box-shadow:4px 4px 4px  
4px rgb(194, 149, 148); -webkit-box-  
shadow:4px 4px 4px 4px rgb(194, 149, 148);  
box-shadow:4px 4px 4px 4px rgb(194, 149,  
148) }
```

Background

The CSS property to change the background color of an element to XYZ 38.3409, 35.1023, 32.7716 is called "background". The background property can be set on classes, ids or directly on the HTML element.

```
.background, #background, body{  
background: rgb(194, 149, 148) }
```

If only the background color should be changed can be used:

```
.background{ background-color: rgb(194,  
149, 148) }
```

This example shows the color as background, it is applied via the CSS property "background".

To optimize and compress your CSS code, you can use our [online CSS compressor and optimizer](#) based on csstidy. If you want to create a linear or radial gradient as background or border, check our [CSS Gradient Generator](#).

Hey! You found this booklet interesting? Support Converting Colors with the new Membership Option!

The pro membership hides all ads, plus gives you double the colors in the color bucket, and more awesome pro features!

[Learn more, Memberships starting at \\$2.50/m!](#)

**Follow me
on Twitter!**

@ConvertingColor