

Converting Colors

XYZ(38.4682, 35.5231, 32.5516)

Have a look what the booklet for
XYZ(38.4682, 35.5231, 32.5516)
contains.

XYZ(38.4209, 35.3886, 32.4094)	3
<i>Conversions</i>	4
<i>Details</i>	6
<i>Harmonies</i>	12
<i>Previews</i>	24
<i>Color Blindness Simulation</i>	28
<i>CSS Examples</i>	31

Color

**XYZ(38.4209, 35.3886,
32.4094)**

Conversions

Conversions Part 1

Format	Color
Hex	C29693
RGB	194, 150, 147
RGB Percent	76%, 59%, 58%
CMY	0.2392, 0.4117, 0.4235
CMYK	0.00, 0.23, 0.24, 0.24
HSL	4°, 28%, 67%
HSV	4°, 24%, 76%
XYZ	38.4209, 35.3886, 32.4094
YIQ	162.8140, 27.1870, 8.3950

Conversions

Conversions Part 2

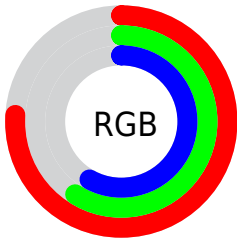
Format	Color
RYB	194, 150, 147
Decimal	12752531
CIELab	66.05, 16.03, 7.93
CIELCh	66, 17.887, 26.314
Yxy	35.3886, 0.3617, 0.3332
Android (android.graphics.Color)	4290942611 (0xFFC29693)
YUV	162.8140, -7.7963, 27.3501
Hunter-Lab	59.4883, 11.1808, 9.3405

Details

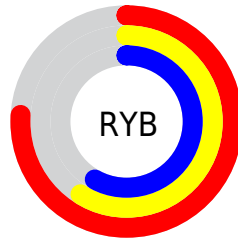
The XYZ color **38.4209, 35.3886, 32.4094** is a light color, and the websafe version is hex **CC9999**. A complement of this color would be **40.4004, 47.3582, 58.0508**, and the grayscale version is **34.7524, 36.5623, 39.8163**.

A 20% lighter version of the original color is **71.9191, 67.9120, 64.5761**, and **17.2206, 15.2572, 13.1036** is the 20% darker color. If you saturate the color by 10%, you get **34.3485, 29.4779, 24.1641**, and if you desaturate by 10%, it is **43.2011, 42.3035, 42.1580**.

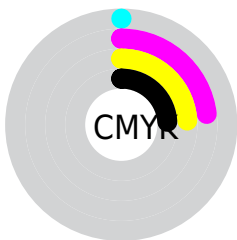
Distribution



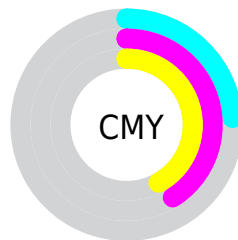
- Red (76%)
- Green (59%)
- Blue (58%)



- Red (76%)
- Yellow (59%)
- Blue (58%)



- Cyan (0%)
- Magenta (23%)
- Yellow (24%)
- Black (24%)





- Cyan (24%)
- Magenta (41%)
- Yellow (42%)

Brightness & Saturation Gradients


These gradients show how the XYZ color 38.4209, 35.3886, 32.4094 changes by changing the brightness by 10 percent. The first figure shows a shift by +10% for each color and the second figure -10%.


Similar to the brightness gradients but the following saturation gradients show a change of the XYZ color 38.4209, 35.3886, 32.4094 by changing the saturation by 10% instead.


 38.4209, 35.3886,
32.4094


 38.4209, 35.3886,
32.4094

330.6718,
326.2803, 327.5300

 26.4882, 23.9624,
21.4070


 72.0526, 68.0873,
64.5577

 17.3238, 15.3057,
13.2277


 94.4822, 90.1286,
86.5407

 10.5624, 9.0342,
7.4530


121.1417,
116.4771, 113.0209

 5.8385, 4.7635,
3.6642

152.3961,
147.5171, 144.4169

 2.7869, 2.1092,
1.4430

188.6110,
183.6330, 181.1473

 1.0421, 0.6698,
0.1749

230.1517,

 0.0000, 0.0000,

225.2092, 223.6306

0.0000

277.3835,
272.6302, 272.2853

■ 38.4209, 35.3886,
32.4094

■ 38.4209, 35.3886,
32.4094

■ 34.3485, 29.4779,
24.1641

■ 43.2011, 42.3035,
42.1580

■ 30.9475, 24.5200,
17.3452

■ 48.7175, 50.2610,
53.4772

■ 28.1826, 20.4665,
11.8725

■ 55.0003, 59.3036,
66.4329

■ 26.0143, 17.2629,
7.6567

■ 62.0774, 69.4699,
81.0864

■ 24.3984, 14.8486,
4.5978

■ 69.9752, 80.7965,
97.4960

■ 23.2848, 13.1551,
2.5809

■ 76.0582, 90.2094,
108.0112

■ 22.6139, 12.1022,
1.4668

■ 22.3846, 11.7421,
1.0867

Harmonies

Analogous

The Analogous color harmony consists of three colors that are next to each other on the color wheel.



38.9900, 35.3886, 39.4794



38.4209, 35.3886, 32.4094



36.5465, 35.3886, 27.6051

Triad

The Triadic color harmony groups three colors that are evenly spaced from another and form a triangle on the color wheel.



38.4209, 35.3886, 32.4094



29.5655, 35.3886, 30.9809



33.3088, 35.3886, 55.0355

Complementary

The Complementary color scheme is a pair of colors which are on the opposite of each other on the color wheel.



38.4209, 35.3886, 32.4094



40.4004, 47.3582, 58.0508

Split Complementary

Split-complementary colors differ from the complementary color scheme. The scheme consists of three colors, the original color and two neighbors of the complement color.



30.8839, 35.3886, 52.0183



38.4209, 35.3886, 32.4094



28.7957, 35.3886, 37.6003

Square

The Square scheme is like the rectangle color scheme, but the four colors are evenly spaced on the color wheel.



38.4209, 35.3886, 32.4094



31.4238, 35.3886, 26.8597



29.2655, 35.3886, 45.3812



35.9492, 35.3886, 53.1744

Rectangle

The Rectangle color scheme consists of four colors that form a rectangle on the color wheel.



38.4209, 35.3886, 32.4094



34.8577, 35.3886, 26.0044



29.2655, 35.3886, 45.3812



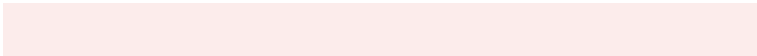
32.4428, 35.3886, 54.5490

Sweetspot

The Sweet Spot groups the original color and five complimentary colors.



38.4219, 35.3902, 32.4101



85.2404, 86.7028, 90.6723



42.1578, 36.1274, 54.4176



18.5284, 18.7875, 19.5720



0.0000, 0.0000, 0.0000



20.3446, 21.4041, 23.3091

Same Dimension

The Same Dimension uses a secret algorithm to generate beautiful new colors.



38.4219, 35.3902, 32.4101



65.5926, 58.2911, 50.5691



42.4297, 43.4058, 33.7461



10.1237, 10.1789, 10.4930



14.7389, 7.7636, 0.7217



0.6550, 0.3718, 0.0372

Inverse Universe

The Inverse Universe completely reimagines the original color for something new.



40.4004, 47.3582, 58.0508



69.7849, 83.6631, 104.9403



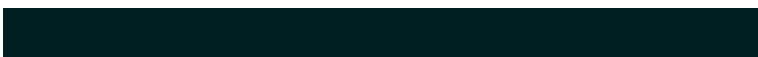
35.8009, 38.1591, 56.5176



10.3117, 11.3146, 12.9253



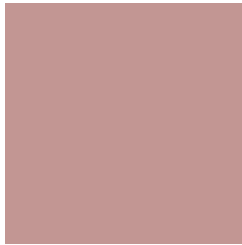
17.3696, 24.4958, 37.3693



0.7674, 1.0923, 1.6203

Previews

White Background



This preview shows how the XYZ color 38.4209, 35.3886, 32.4094 looks on a white background.

Color Contrast Check

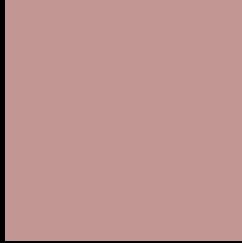
Large Text (above 18pt) WCAG AA × Fail

Any Text WCAG AA × Fail

Large Text (above 18pt) WCAG AAA × Fail

Any Text WCAG AAA × Fail

Black Background



This preview shows how the XYZ color 38.4209, 35.3886, 32.4094 looks on a black background.

Color Contrast Check

Large Text (above 18pt) WCAG AA ✓ Pass

Any Text WCAG AA ✓ Pass

Large Text (above 18pt) WCAG AAA ✓ Pass

Any Text WCAG AAA ✓ Pass

If you want to check with other color combinations, try the [Color Contrast Checker](#).

XYZ 38.4209, 35.3886, 32.4094

Background



This preview shows how black text looks on a background with the XYZ color 38.4209, 35.3886, 32.4094.



This preview shows how white text looks on a background with the XYZ color 38.4209, 35.3886,

32.4094.

Color Blindness Simulation

Color vision deficiency is a very complex topic, and I could not describe the different causes any better than Wikipedia does, so if you want to learn more, you should check out their [article about color blindness](#).

Dichromacy



Original Color

38.4209, 35.3886, 32.4094

Protanopia

33.9642, 35.5156, 34.7709

Deuteranopia

36.2011, 35.4631, 32.1312



Tritanopia

39.4407, 35.3200, 37.9964

Trichromacy



Original Color

38.4209, 35.3886, 32.4094

Protanomaly

35.2980, 35.2090, 33.7898

Deuteranomaly

36.8292, 35.2969, 32.0660

Tritanomaly

39.1695, 35.4636, 35.7910

Monochromacy



Original Color

38.4209, 35.3886, 32.4094

Achromatopsia

34.8123, 36.6253, 39.8849

Achromatomaly

35.7682, 35.8867, 36.9399

CSS Examples

Text

The CSS property to change the color of the text to XYZ 38.4209, 35.3886, 32.4094 is called "color". The color property can be set on classes, ids or directly on the HTML element.

This example shows how text in the color `rgb(194, 150, 147)` looks like.

```
.text, #text, p{  
    color:rgb(194, 150, 147)  
}
```

If you want to add a text shadow in that color use the text-shadow property, you can generate a text shadow directly with our [CSS Text Shadow Generator](#).

Here you see how black text with a 4 pixel rgb(194, 150, 147) colored shadow looks like.

```
.shadow{ text-shadow: 4px 4px 2px rgb(194, 150, 147) }
```

Border

The CSS property to change the border of an element to XYZ 38.4209, 35.3886, 32.4094 is called "border". The border property can be set on classes, ids or directly on the HTML element.

This example shows the color as border, it can be applied via the CSS property "border" or "border-color".

```
.border, #border, table{ border:4px solid rgb(194, 150, 147) }
```


If only the border color should be changed use the property `border-color`.

```
.border{ border-color:rgb(194, 150, 147) }
```

If you want to add a box shadow in that color use:

Here you see how a box with a 4 pixel `rgb(194, 150, 147)` colored shadow looks like.

```
.boxshadow{ -moz-box-shadow:4px 4px 4px  
4px rgb(194, 150, 147); -webkit-box-  
shadow:4px 4px 4px 4px rgb(194, 150, 147);  
box-shadow:4px 4px 4px 4px rgb(194, 150,  
147) }
```

Background

The CSS property to change the background color of an element to XYZ 38.4209, 35.3886, 32.4094 is called "background". The background property can be set on classes, ids or directly on the HTML element.

```
.background, #background, body{  
background: rgb(194, 150, 147) }
```

If only the background color should be changed can be used:

```
.background{ background-color: rgb(194,  
150, 147) }
```

This example shows the color as background, it is applied via the CSS property "background".

To optimize and compress your CSS code, you can use our [online CSS compressor and optimizer](#) based on csstidy. If you want to create a linear or radial gradient as background or border, check our [CSS Gradient Generator](#).

Hey! You found this booklet interesting? Support Converting Colors with the new Membership Option!

The pro membership hides all ads, plus gives you double the colors in the color bucket, and more awesome pro features!

[Learn more, Memberships starting at \\$2.50/m!](#)

**Follow me
on Twitter!**

@ConvertingColor