

Converting Colors

XYZ(38.4895, 37.5641, 36.2609)

Have a look what the booklet for
XYZ(38.4895, 37.5641, 36.2609)
contains.

XYZ(38.5642, 37.6019, 36.2357)	3
<i>Conversions</i>	4
<i>Details</i>	6
<i>Harmonies</i>	12
<i>Previews</i>	24
<i>Color Blindness Simulation</i>	28
<i>CSS Examples</i>	31

Color

**XYZ(38.5642, 37.6019,
36.2357)**

Conversions

Conversions Part 1

Format	Color
Hex	BA9F9B
RGB	186, 159, 155
RGB Percent	73%, 62%, 61%
CMY	0.2706, 0.3765, 0.3922
CMYK	0.00, 0.15, 0.17, 0.27
HSL	8°, 18%, 67%
HSV	8°, 17%, 73%
XYZ	38.5642, 37.6019, 36.2357
YIQ	166.6170, 17.3760, 4.4800

Conversions

Conversions Part 2

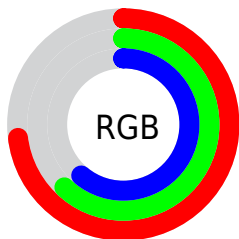
Format	Color
RYB	186, 160, 155
Decimal	12230555
CIELab	67.73, 9.27, 5.76
CIELCh	68, 10.911, 31.852
Yxy	37.6019, 0.3431, 0.3345
Android (android.graphics.Color)	4290420635 (0xFFBA9F9B)
YUV	166.6170, -5.7272, 16.9989
Hunter-Lab	61.3204, 4.9474, 7.8884

Details

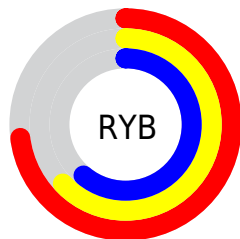
The XYZ color **38.5642, 37.6019, 36.2357** is a light color, and the websafe version is hex **CC9999**. A complement of this color would be **39.1082, 43.9686, 52.8802**, and the grayscale version is **36.5662, 38.4705, 41.8944**.

A 20% lighter version of the original color is **72.1731, 71.5738, 70.3328**, and **17.5341, 16.7111, 15.3981** is the 20% darker color. If you saturate the color by 10%, you get **34.5158, 31.8150, 27.7640**, and if you desaturate by 10%, it is **43.2204, 44.2185, 46.0979**.

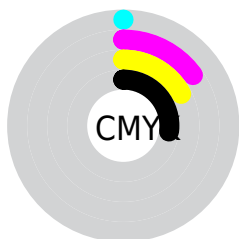
Distribution



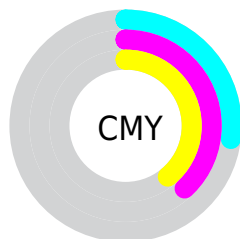
- Red (73%)
- Green (62%)
- Blue (61%)



- Red (73%)
- Yellow (63%)
- Blue (61%)



- Cyan (0%)
- Magenta (15%)
- Yellow (17%)
- Black (27%)





- Cyan (27%)
- Magenta (38%)
- Yellow (39%)

Brightness & Saturation Gradients


These gradients show how the XYZ color 38.5642, 37.6019, 36.2357 changes by changing the brightness by 10 percent. The first figure shows a shift by +10% for each color and the second figure -10%.


Similar to the brightness gradients but the following saturation gradients show a change of the XYZ color 38.5642, 37.6019, 36.2357 by changing the saturation by 10% instead.

 38.5642, 37.6019,
36.2357


 38.5642, 37.6019,
36.2357


331.2732,
335.9091, 345.0581

 26.6001, 25.6739,
24.3252


 72.2704, 71.4975,
70.5688

 17.4081, 16.5798,
15.3606


 94.7432, 94.2339,
93.8285

 10.6230, 9.9354,
8.9234


121.4497,
121.3419, 121.7083

 5.8794, 5.3561,
4.5951

152.7550,
153.2058, 154.6268

 2.8118, 2.4577,
1.9572

189.0247,
190.2101, 193.0025

 1.0550, 0.8553,
0.5288

230.6241,

 0.0000, 0.0000,

232.7392, 237.2539

0.0000

277.9185,
281.1774, 287.7996

■ 38.5642, 37.6019,
36.2357

■ 38.5642, 37.6019,
36.2357

■ 34.5158, 31.8150,
27.7640

■ 43.2204, 44.2185,
46.0979

■ 31.0469, 26.8203,
20.6181

■ 48.5049, 51.6904,
57.4070

■ 28.1319, 22.5845,
14.7314

■ 54.4409, 60.0486,
70.2187

■ 25.7417, 19.0705,
10.0306

■ 61.0498, 69.3208,
84.5855

■ 23.8448, 16.2378,
6.4350

■ 68.3518, 79.5336,
100.5571

■ 22.4059, 14.0419,
3.8537

■ 74.0598, 89.1792,
107.9177

■ 21.3853, 12.4328,
2.1811

■ 20.7335, 11.3522,
1.2765

■ 20.5769, 11.0933,
1.0567

Harmonies

Analogous

The Analogous color harmony consists of three colors that are next to each other on the color wheel.



39.0782, 37.6019, 40.6428



38.5642, 37.6019, 36.2357



37.2906, 37.6019, 33.2899

Triad

The Triadic color harmony groups three colors that are evenly spaced from another and form a triangle on the color wheel.



38.5642, 37.6019, 36.2357



32.9568, 37.6019, 36.7169



35.8443, 37.6019, 50.9394

Complementary

The Complementary color scheme is a pair of colors which are on the opposite of each other on the color wheel.



38.5642, 37.6019, 36.2357



39.1082, 43.9686, 52.8802

Split Complementary

Split-complementary colors differ from the complementary color scheme. The scheme consists of three colors, the original color and two neighbors of the complement color.



34.2320, 37.6019, 49.6853



38.5642, 37.6019, 36.2357



32.5965, 37.6019, 41.2429

Square

The Square scheme is like the rectangle color scheme, but the four colors are evenly spaced on the color wheel.



38.5642, 37.6019, 36.2357



34.0560, 37.6019, 33.5519



33.0562, 37.6019, 46.0393



37.4776, 37.6019, 49.3447

Rectangle

The Rectangle color scheme consists of four colors that form a rectangle on the color wheel.



38.5642, 37.6019, 36.2357



36.2009, 37.6019, 32.4227



33.0562, 37.6019, 46.0393



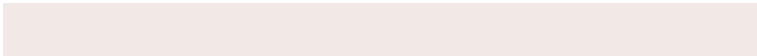
35.2820, 37.6019, 50.8366

Sweetspot

The Sweet Spot groups the original color and five complimentary colors.



38.5652, 37.6036, 36.2365



79.7788, 82.1879, 86.6232



40.4546, 37.2756, 49.5270



17.4264, 17.8977, 18.7727



90.7827, 95.5105, 104.0109



18.6292, 19.5994, 21.3438

Same Dimension

The Same Dimension uses a secret algorithm to generate beautiful new colors.



38.5652, 37.6036, 36.2365



67.0864, 64.1425, 59.7661



41.3251, 43.1233, 37.1564



9.0956, 9.1942, 9.4022



13.8751, 7.5265, 0.7215



0.5196, 0.3262, 0.0356

Inverse Universe

The Inverse Universe completely reimagines the original color for something new.



39.1082, 43.9686, 52.8802



68.2549, 77.8557, 95.6316



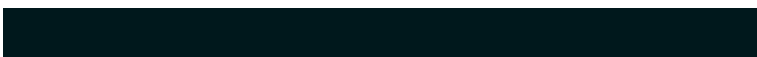
36.1783, 38.1089, 51.9036



9.1651, 10.0074, 11.5280



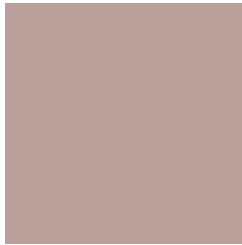
14.6913, 19.8422, 34.3087



0.5457, 0.7551, 1.2187

Previews

White Background



This preview shows how the XYZ color 38.5642, 37.6019, 36.2357 looks on a white background.

Color Contrast Check

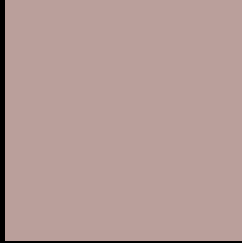
Large Text (above 18pt) WCAG AA × Fail

Any Text WCAG AA × Fail

Large Text (above 18pt) WCAG AAA × Fail

Any Text WCAG AAA × Fail

Black Background



This preview shows how the XYZ color 38.5642, 37.6019, 36.2357 looks on a black background.

Color Contrast Check

Large Text (above 18pt) WCAG AA ✓ Pass

Any Text WCAG AA ✓ Pass

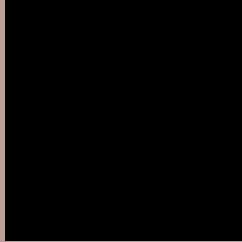
Large Text (above 18pt) WCAG AAA ✓ Pass

Any Text WCAG AAA ✓ Pass

If you want to check with other color combinations, try the [Color Contrast Checker](#).

XYZ 38.5642, 37.6019, 36.2357

Background



This preview shows how black text looks on a background with the XYZ color 38.5642, 37.6019, 36.2357.



This preview shows how white text looks on a background with the XYZ color 38.5642, 37.6019,

Color Blindness Simulation

Color vision deficiency is a very complex topic, and I could not describe the different causes any better than Wikipedia does, so if you want to learn more, you should check out their [article about color blindness](#).

Dichromacy



Original Color

38.5642, 37.6019, 36.2357

Protanopia

36.0246, 37.5656, 37.6999

Deuteranopia

38.3221, 37.4771, 36.2244



Tritanopia

39.9574, 37.6699, 42.7011

Trichromacy



Original Color

38.5642, 37.6019, 36.2357

Protanomaly

36.9106, 37.5051, 37.1921

Deuteranomaly

38.3221, 37.4771, 36.2244

Tritanomaly

39.4212, 37.6989, 40.3208

Monochromacy



Original Color

38.5642, 37.6019, 36.2357

Achromatopsia

36.7301, 38.6429, 42.0822

Achromatomaly

37.3419, 38.1939, 40.0544

CSS Examples

Text

The CSS property to change the color of the text to XYZ 38.5642, 37.6019, 36.2357 is called "color". The color property can be set on classes, ids or directly on the HTML element.

This example shows how text in the color `rgb(186, 159, 155)` looks like.

```
.text, #text, p{  
    color:rgb(186, 159, 155)  
}
```

If you want to add a text shadow in that color use the text-shadow property, you can generate a text shadow directly with our [CSS Text Shadow Generator](#).

Here you see how black text with a 4 pixel rgb(186, 159, 155) colored shadow looks like.

```
.shadow{ text-shadow: 4px 4px 2px rgb(186, 159, 155) }
```

Border

The CSS property to change the border of an element to XYZ 38.5642, 37.6019, 36.2357 is called "border". The border property can be set on classes, ids or directly on the HTML element.

This example shows the color as border, it can be applied via the CSS property "border" or "border-color".

```
.border, #border, table{ border:4px solid rgb(186, 159, 155) }
```


If only the border color should be changed use the property `border-color`.

```
.border{ border-color:rgb(186, 159, 155) }
```

If you want to add a box shadow in that color use:

Here you see how a box with a 4 pixel `rgb(186, 159, 155)` colored shadow looks like.

```
.boxshadow{ -moz-box-shadow:4px 4px 4px  
4px rgb(186, 159, 155); -webkit-box-  
shadow:4px 4px 4px 4px rgb(186, 159, 155);  
box-shadow:4px 4px 4px 4px rgb(186, 159,  
155) }
```

Background

The CSS property to change the background color of an element to XYZ 38.5642, 37.6019, 36.2357 is called "background". The background property can be set on classes, ids or directly on the HTML element.

```
.background, #background, body{  
background: rgb(186, 159, 155) }
```

If only the background color should be changed can be used:

```
.background{ background-color: rgb(186,  
159, 155) }
```

This example shows the color as background, it is applied via the CSS property "background".

To optimize and compress your CSS code, you can use our [online CSS compressor and optimizer](#) based on csstidy. If you want to create a linear or radial gradient as background or border, check our [CSS Gradient Generator](#).

Hey! You found this booklet interesting? Support Converting Colors with the new Membership Option!

The pro membership hides all ads, plus gives you double the colors in the color bucket, and more awesome pro features!

[Learn more, Memberships starting at \\$2.50/m!](#)

**Follow me
on Twitter!**

@ConvertingColor