

# Converting Colors

XYZ(38.5151, 36.6201, 33.3249)

Have a look what the booklet for  
XYZ(38.5151, 36.6201, 33.3249)  
contains.

<b>XYZ(38.6320, 36.6890, 33.4793)</b> .....	3
<i><b>Conversions</b></i> .....	4
<i><b>Details</b></i> .....	6
<i><b>Harmonies</b></i> .....	12
<i><b>Previews</b></i> .....	24
<i><b>Color Blindness Simulation</b></i> .....	28
<i><b>CSS Examples</b></i> .....	31

# Color

**XYZ(38.6320, 36.6890,  
33.4793)**

# Conversions

## Conversions Part 1

Format	Color
Hex	BF9B95
RGB	191, 155, 149
RGB Percent	75%, 61%, 58%
CMY	0.2510, 0.3921, 0.4157
CMYK	0.00, 0.19, 0.22, 0.25
HSL	9°, 25%, 67%
HSV	9°, 22%, 75%
XYZ	38.6320, 36.6890, 33.4793
YIQ	165.0800, 23.3820, 5.7660

# Conversions

## Conversions Part 2

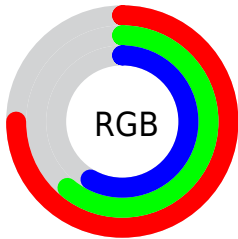
Format	Color
<a href="#">RYB</a>	<a href="#">191, 156, 149</a>
Decimal	<a href="#">12557205</a>
CIELab	<a href="#">67.04, 12.43, 8.19</a>
CIELCh	<a href="#">67, 14.883, 33.374</a>
Yxy	<a href="#">36.6890, 0.3551, 0.3372</a>
Android (android.graphics.Color)	<a href="#">4290747285</a> ( <a href="#">0xFFBF9B95</a> )
YUV	<a href="#">165.0800, -7.9274, 22.7318</a>
Hunter-Lab	<a href="#">60.5714, 7.8459, 9.6290</a>

# Details

The XYZ color **38.6320, 36.6890, 33.4793** is a light color, and the websafe version is hex **CC9999**. A complement of this color would be **39.1469, 44.8477, 55.8836**, and the grayscale version is **35.8324, 37.6984, 41.0536**.

A 20% lighter version of the original color is **72.5375, 70.3614, 66.2579**, and **17.4714, 16.1008, 13.7422** is the 20% darker color. If you saturate the color by 10%, you get **34.6884, 31.0452, 25.2483**, and if you desaturate by 10%, it is **43.1970, 43.1749, 43.1521**.

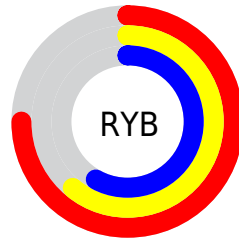
# Distribution



Red (75%)

Green (61%)

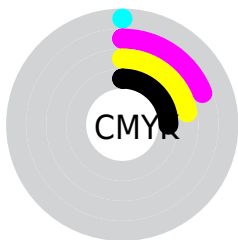
Blue (58%)



Red (75%)

Yellow (61%)

Blue (58%)

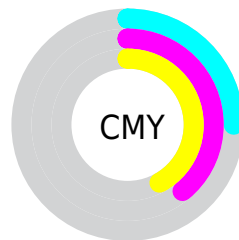


Cyan (0%)

Magenta (19%)

Yellow (22%)

Black (25%)



Cyan (25%)

Magenta (39%)


Yellow (42%)


# Brightness & Saturation Gradients

These gradients show how the XYZ color 38.6320, 36.6890, 33.4793 changes by changing the brightness by 10 percent. The first figure shows a shift by +10% for each color and the second figure -10%.


Similar to the brightness gradients but the following saturation gradients show a change of the XYZ color 38.6320, 36.6890, 33.4793 by changing the saturation by 10% instead.





 38.6320, 36.6890,  
33.4793


 38.6320, 36.6890,  
33.4793


331.5575,  
331.9621, 332.5020

 26.6530, 24.9668,  
22.2198


 72.3735, 70.0942,  
66.2477

 17.4480, 16.0523,  
13.8186


 94.8667, 92.5460,  
88.5937

 10.6517, 9.5612,  
7.8573


121.5953,  
119.3431, 115.4722

 5.8987, 5.1090,  
3.9173

152.9247,  
150.8699, 147.3018

 2.8237, 2.3114,  
1.5801

189.2203,  
187.5108, 184.5011

 1.0612, 0.7797,  
0.2766

230.8474,

 0.0000, 0.0000,

229.6502, 227.4885

0.0000

278.1714,  
277.6725, 276.6826

■ 38.6320, 36.6890,  
33.4793

■ 38.6320, 36.6890,  
33.4793

■ 34.6884, 31.0452,  
25.2483

■ 43.1970, 43.1749,  
43.1521

■ 31.3364, 26.2041,  
18.3878

■ 48.4058, 50.5301,  
54.3287

■ 28.5480, 22.1305,  
12.8238

■ 54.2831, 58.7872,  
67.0706

■ 26.2917, 18.7848,  
8.4743

■ 60.8517, 67.9752,  
81.4348

■ 24.5330, 16.1237,  
5.2481

■ 68.1330, 78.1220,  
97.4756

■ 23.2331, 14.0994,  
3.0408

■ 74.7317, 88.6879,  
107.7874

■ 22.3472, 12.6576,  
1.7286

■ 75.2959, 89.8164,  
107.9755

■ 21.8849, 11.8743,  
1.1385

# Harmonies

## Analogous

The Analogous color harmony consists of three colors that are next to each other on the color wheel.



39.3969, 36.6890, 39.2193



38.6320, 36.6890, 33.4793



36.8578, 36.6890, 29.8141

# Triad

The Triadic color harmony groups three colors that are evenly spaced from another and form a triangle on the color wheel.



38.6320, 36.6890, 33.4793



31.1259, 36.6890, 34.6210



35.1285, 36.6890, 53.7196

# Complementary

The Complementary color scheme is a pair of colors which are on the opposite of each other on the color wheel.



38.6320, 36.6890, 33.4793



39.1469, 44.8477, 55.8836

# Split Complementary

Split-complementary colors differ from the complementary color scheme. The scheme consists of three colors, the original color and two neighbors of the complement color.



32.9584, 36.6890, 52.1519



38.6320, 36.6890, 33.4793



30.7071, 36.6890, 40.6859

# Square

The Square scheme is like the rectangle color scheme, but the four colors are evenly spaced on the color wheel.



38.6320, 36.6890, 33.4793



32.5332, 36.6890, 30.4215



31.3639, 36.6890, 47.2007



37.3199, 36.6890, 51.2809



# Rectangle

The Rectangle color scheme consists of four colors that form a rectangle on the color wheel.



38.6320, 36.6890, 33.4793



35.3761, 36.6890, 28.8072



31.3639, 36.6890, 47.2007



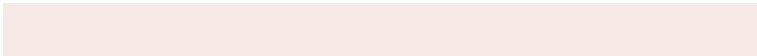
34.3723, 36.6890, 53.6446

# Sweetspot

The Sweet Spot groups the original color and five complimentary colors.



38.6330, 36.6907, 33.4801



81.7698, 83.5541, 86.7069



41.0329, 36.0914, 50.9245



17.8316, 18.1722, 18.7735



92.9021, 97.7402, 106.4391



19.4759, 20.4902, 22.3138



# Same Dimension

The Same Dimension uses a secret algorithm to generate beautiful new colors.



38.6330, 36.6907, 33.4801



65.9333, 61.0597, 53.1317



42.3580, 44.1406, 34.7217



9.6373, 9.7505, 9.9507



14.4187, 7.8763, 0.7603



0.6006, 0.3801, 0.0417



# Inverse Universe

The Inverse Universe completely reimagines the original color for something new.



39.1469, 44.8477, 55.8836



67.0005, 78.0495, 99.8129



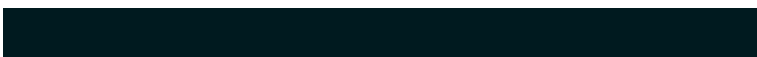
35.1459, 36.8459, 54.5500



9.6892, 10.5707, 12.2019



14.9140, 19.9398, 35.4556

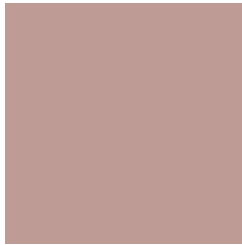


0.6165, 0.8457, 1.3996



# Previews

## White Background



This preview shows how the XYZ color 38.6320, 36.6890, 33.4793 looks on a white background.

## Color Contrast Check

Large Text (above 18pt) WCAG AA × Fail

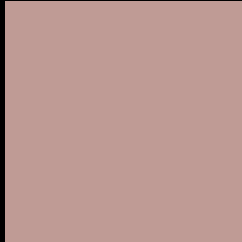
Any Text WCAG AA × Fail

Large Text (above 18pt) WCAG AAA × Fail

Any Text WCAG AAA × Fail



# Black Background



This preview shows how the XYZ color 38.6320, 36.6890, 33.4793 looks on a black background.

## Color Contrast Check

Large Text (above 18pt) WCAG AA ✓ Pass

Any Text WCAG AA ✓ Pass

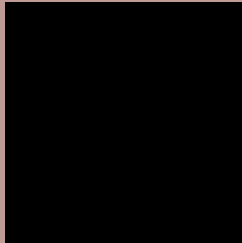
Large Text (above 18pt) WCAG AAA ✓ Pass

Any Text WCAG AAA ✓ Pass

If you want to check with other color combinations, try the [Color Contrast Checker](#).

**XYZ 38.6320, 36.6890, 33.4793**

## **Background**



This preview shows how black text looks on a background with the XYZ color 38.6320, 36.6890, 33.4793.



This preview shows how white text looks on a background with the XYZ color 38.6320, 36.6890,



# Color Blindness Simulation

Color vision deficiency is a very complex topic, and I could not describe the different causes any better than Wikipedia does, so if you want to learn more, you should check out their [article about color blindness](#).

## Dichromacy



### Original Color

38.6320, 36.6890, 33.4793

### Protanopia

35.2091, 36.9293, 35.4093

### Deuteranopia

37.6593, 36.9379, 33.5786



## Tritanopia

40.0844, 36.8003, 40.1124

# Trichromacy



## Original Color

38.6320, 36.6890, 33.4793

## Protanomaly

36.3698, 36.7557, 34.8834

## Deuteranomaly

37.9753, 36.8487, 33.5448

## Tritanomaly

39.5518, 36.8209, 37.8234

# Monochromacy



## Original Color

38.6320, 36.6890, 33.4793

## Achromatopsia

35.7637, 37.6262, 40.9749

## Achromatomaly

36.4584, 36.9916, 38.0194

# CSS Examples

## Text

The CSS property to change the color of the text to XYZ 38.6320, 36.6890, 33.4793 is called "color". The color property can be set on classes, ids or directly on the HTML element.

This example shows how text in the color `rgb(191, 155, 149)` looks like.

```
.text, #text, p{  
    color:rgb(191, 155, 149)  
}
```

If you want to add a text shadow in that color use the text-shadow property, you can generate a text shadow directly with our [CSS Text Shadow Generator](#).

Here you see how black text with a 4 pixel rgb(191, 155, 149) colored shadow looks like.

```
.shadow{ text-shadow: 4px 4px 2px rgb(191, 155, 149) }
```

## Border

The CSS property to change the border of an element to XYZ 38.6320, 36.6890, 33.4793 is called "border". The border property can be set on classes, ids or directly on the HTML element.

This example shows the color as border, it can be applied via the CSS property "border" or "border-color".

```
.border, #border, table{ border:4px solid rgb(191, 155, 149) }
```



If only the border color should be changed use the property `border-color`.

```
.border{ border-color:rgb(191, 155, 149) }
```

If you want to add a box shadow in that color use:

Here you see how a box with a 4 pixel `rgb(191, 155, 149)` colored shadow looks like.

```
.boxshadow{ -moz-box-shadow:4px 4px 4px  
4px rgb(191, 155, 149); -webkit-box-  
shadow:4px 4px 4px 4px rgb(191, 155, 149);  
box-shadow:4px 4px 4px 4px rgb(191, 155,  
149) }
```

# Background

The CSS property to change the background color of an element to XYZ 38.6320, 36.6890, 33.4793 is called "background". The background property can be set on classes, ids or directly on the HTML element.

```
.background, #background, body{  
background: rgb(191, 155, 149) }
```

If only the background color should be changed can be used:

```
.background{ background-color: rgb(191,  
155, 149) }
```

This example shows the color as background, it is applied via the CSS property "background".

To optimize and compress your CSS code, you can use our [online CSS compressor and optimizer](#) based on csstidy. If you want to create a linear or radial gradient as background or border, check our [CSS Gradient Generator](#).

Hey! You found this booklet interesting? Support Converting Colors with the new Membership Option!

The pro membership hides all ads, plus gives you double the colors in the color bucket, and more awesome pro features!

**[Learn more, Memberships starting at \\$2.50/m!](#)**

**Follow me  
on Twitter!**

@ConvertingColor