

Converting Colors

XYZ(38.5659, 35.9320, 32.9199)

Have a look what the booklet for
XYZ(38.5659, 35.9320, 32.9199)
contains.

XYZ(38.5659, 35.9320, 32.9199)	3
<i>Conversions</i>	4
<i>Details</i>	6
<i>Harmonies</i>	12
<i>Previews</i>	24
<i>Color Blindness Simulation</i>	28
<i>CSS Examples</i>	31

Color

**XYZ(38.5659, 35.9320,
32.9199)**

Conversions

Conversions Part 1

Format	Color
Hex	C19894
RGB	193, 152, 148
RGB Percent	76%, 60%, 58%
CMY	0.2431, 0.4039, 0.4196
CMYK	0.00, 0.21, 0.23, 0.24
HSL	5°, 27%, 67%
HSV	5°, 23%, 76%
XYZ	38.5659, 35.9320, 32.9199
YIQ	163.8030, 25.7200, 7.4480

Conversions

Conversions Part 2

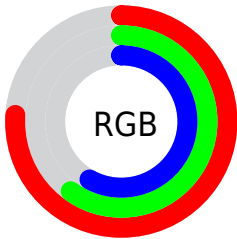
Format	Color
RYB	193, 152, 148
Decimal	12687508
CIELab	66.47, 14.70, 7.95
CIElCh	66, 16.710, 28.417
Yxy	35.9320, 0.3590, 0.3345
Android (android.graphics.Color)	4290877588 (0xFFC19894)
YUV	163.8030, -7.7909, 25.6058
Hunter-Lab	59.9433, 9.9413, 9.3992

Details

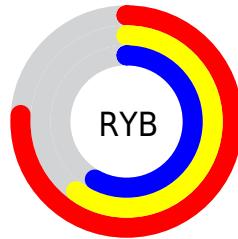
The XYZ color **38.5659, 35.9320, 32.9199** is a light color, and the websafe version is hex **CC9999**. A complement of this color would be **40.0357, 46.5404, 57.3256**, and the grayscale version is **35.2210, 37.0553, 40.3532**.

A 20% lighter version of the original color is **72.1563, 68.7309, 65.3405**, and **17.4588, 15.6594, 13.4116** is the 20% darker color. If you saturate the color by 10%, you get **34.5186, 30.0815, 24.6518**, and if you desaturate by 10%, it is **43.2930, 42.7338, 42.6720**.

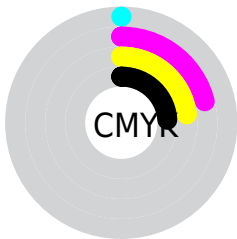
Distribution



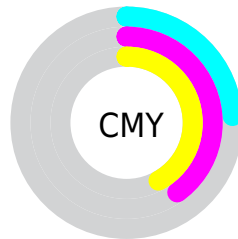
- Red (76%)
- Green (60%)
- Blue (58%)



- Red (76%)
- Yellow (60%)
- Blue (58%)



- Cyan (0%)
- Magenta (21%)
- Yellow (23%)
- Black (24%)





- Cyan (24%)
- Magenta (40%)
- Yellow (42%)

Brightness & Saturation Gradients


These gradients show how the XYZ color 38.5659, 35.9320, 32.9199 changes by changing the brightness by 10 percent. The first figure shows a shift by +10% for each color and the second figure -10%.


Similar to the brightness gradients but the following saturation gradients show a change of the XYZ color 38.5659, 35.9320, 32.9199 by changing the saturation by 10% instead.


 38.5659, 35.9320,
32.9199


 38.5659, 35.9320,
32.9199

331.2804,
328.6632, 329.9096

 26.6014, 24.3817,
21.7945

 72.2730, 68.9271,
65.3650

 17.4091, 15.6170,
13.5091


 94.7463, 91.1407,
87.5218

 10.6237, 9.2535,
7.6452


121.4533,
117.6774, 114.1928

 5.8798, 4.9069,
3.7843

152.7593,
148.9218, 145.7965

 2.8121, 2.1928,
1.5078

189.0296,
185.2582, 182.7515

 1.0552, 0.7160,
0.2237

230.6297,

 0.0000, 0.0000,

227.0710, 225.4763

0.0000

277.9248,
274.7445, 274.3895

■ 38.5659, 35.9320,
32.9199

■ 38.5659, 35.9320,
32.9199

■ 34.5186, 30.0815,
24.6518

■ 43.2930, 42.7338,
42.6720

■ 31.1170, 25.1353,
17.7930

■ 48.7261, 50.5214,
53.9737

■ 28.3284, 21.0496,
12.2653

■ 54.8936, 59.3339,
66.8891

■ 26.1161, 17.7752,
7.9823

■ 61.8214, 69.2064,
81.4782

■ 24.4396, 15.2579,
4.8471

■ 69.5344, 80.1727,
97.7978

■ 23.2529, 13.4367,
2.7488

■ 75.8025, 90.0776,
107.9992

■ 22.5020, 12.2413,
1.5542

■ 22.1956, 11.7438,
1.0969

Harmonies

Analogous

The Analogous color harmony consists of three colors that are next to each other on the color wheel.



39.1966, 35.9320, 39.5062



38.5659, 35.9320, 32.9199



36.7374, 35.9320, 28.5103

Triad

The Triadic color harmony groups three colors that are evenly spaced from another and form a triangle on the color wheel.



38.5659, 35.9320, 32.9199



30.2114, 35.9320, 32.3351



34.0194, 35.9320, 54.5956

Complementary

The Complementary color scheme is a pair of colors which are on the opposite of each other on the color wheel.



38.5659, 35.9320, 32.9199



40.0357, 46.5404, 57.3256

Split Complementary

Split-complementary colors differ from the complementary color scheme. The scheme consists of three colors, the original color and two neighbors of the complement color.



31.6914, 35.9320, 52.0902



38.5659, 35.9320, 32.9199



29.5604, 35.9320, 38.7440

Square

The Square scheme is like the rectangle color scheme, but the four colors are evenly spaced on the color wheel.



38.5659, 35.9320, 32.9199



31.9111, 35.9320, 28.2028



30.0890, 35.9320, 46.0620



36.4960, 35.9320, 52.5528

Rectangle

The Rectangle color scheme consists of four colors that form a rectangle on the color wheel.



38.5659, 35.9320, 32.9199



35.1285, 35.9320, 27.1070



30.0890, 35.9320, 46.0620



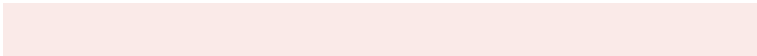
33.1943, 35.9320, 54.2521

Sweetspot

The Sweet Spot groups the original color and five complimentary colors.



38.5669, 35.9337, 32.9206



83.4243, 84.9796, 88.6532



41.7952, 36.2028, 53.0720



17.7694, 18.0476, 18.7528



92.9021, 97.7402, 106.4391



19.4759, 20.4902, 22.3138

Same Dimension

The Same Dimension uses a secret algorithm to generate beautiful new colors.



38.5669, 35.9337, 32.9206



65.2106, 58.7802, 51.0503



42.5225, 43.8449, 34.2392



10.1437, 10.2187, 10.4997



14.7885, 7.8627, 0.7382



0.6640, 0.3898, 0.0402

Inverse Universe

The Inverse Universe completely reimagines the original color for something new.



40.0357, 46.5404, 57.3256



68.2982, 81.0964, 102.4138



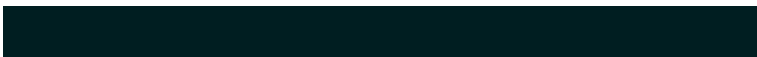
35.6118, 37.6926, 55.8510



10.2895, 11.2702, 12.9179



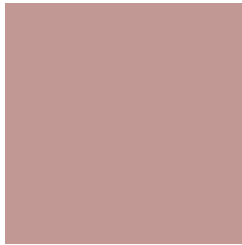
16.7363, 23.2291, 37.1582



0.7460, 1.0494, 1.6131

Previews

White Background



This preview shows how the XYZ color 38.5659, 35.9320, 32.9199 looks on a white background.

Color Contrast Check

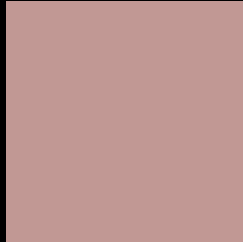
Large Text (above 18pt) WCAG AA × Fail

Any Text WCAG AA × Fail

Large Text (above 18pt) WCAG AAA × Fail

Any Text WCAG AAA × Fail

Black Background



This preview shows how the XYZ color 38.5659, 35.9320, 32.9199 looks on a black background.

Color Contrast Check

Large Text (above 18pt) WCAG AA ✓ Pass

Any Text WCAG AA ✓ Pass

Large Text (above 18pt) WCAG AAA ✓ Pass

Any Text WCAG AAA ✓ Pass

If you want to check with other color combinations, try the [Color Contrast Checker](#).

XYZ 38.5659, 35.9320, 32.9199

Background



This preview shows how black text looks on a background with the XYZ color 38.5659, 35.9320, 32.9199.



This preview shows how white text looks on a background with the XYZ color 38.5659, 35.9320,

Color Blindness Simulation

Color vision deficiency is a very complex topic, and I could not describe the different causes any better than Wikipedia does, so if you want to learn more, you should check out their [article about color blindness](#).

Dichromacy



Original Color

38.5659, 35.9320, 32.9199

Protanopia

34.4310, 36.0051, 35.2720

Deuteranopia

36.6834, 35.9508, 32.6095



Tritanopia

39.9336, 36.0234, 39.0309

Trichromacy



Original Color

38.5659, 35.9320, 32.9199

Protanomaly

35.7173, 35.9182, 34.3286

Deuteranomaly

37.4813, 36.1141, 32.5990

Tritanomaly

39.4005, 36.0369, 36.7775

Monochromacy



Original Color

38.5659, 35.9320, 32.9199

Achromatopsia

35.2861, 37.1238, 40.4278

Achromatomaly

36.4216, 36.7242, 37.5166

CSS Examples

Text

The CSS property to change the color of the text to XYZ 38.5659, 35.9320, 32.9199 is called "color". The color property can be set on classes, ids or directly on the HTML element.

This example shows how text in the color `rgb(193, 152, 148)` looks like.

```
.text, #text, p{  
    color:rgb(193, 152, 148)  
}
```

If you want to add a text shadow in that color use the text-shadow property, you can generate a text shadow directly with our [CSS Text Shadow Generator](#).

Here you see how black text with a 4 pixel rgb(193, 152, 148) colored shadow looks like.

```
.shadow{ text-shadow: 4px 4px 2px rgb(193, 152, 148) }
```

Border

The CSS property to change the border of an element to XYZ 38.5659, 35.9320, 32.9199 is called "border". The border property can be set on classes, ids or directly on the HTML element.

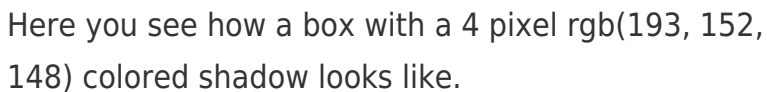
This example shows the color as border, it can be applied via the CSS property "border" or "border-color".

```
.border, #border, table{ border:4px solid rgb(193, 152, 148) }
```


If only the border color should be changed use the property `border-color`.

```
.border{ border-color:rgb(193, 152, 148) }
```

If you want to add a box shadow in that color use:



Here you see how a box with a 4 pixel `rgb(193, 152, 148)` colored shadow looks like.

```
.boxshadow{ -moz-box-shadow:4px 4px 4px 4px rgb(193, 152, 148); -webkit-box-shadow:4px 4px 4px 4px rgb(193, 152, 148); box-shadow:4px 4px 4px 4px rgb(193, 152, 148) }
```

Background

The CSS property to change the background color of an element to XYZ 38.5659, 35.9320, 32.9199 is called "background". The background property can be set on classes, ids or directly on the HTML element.

```
.background, #background, body{  
background: rgb(193, 152, 148) }
```

If only the background color should be changed can be used:

```
.background{ background-color: rgb(193,  
152, 148) }
```

This example shows the color as background, it is applied via the CSS property "background".

To optimize and compress your CSS code, you can use our [online CSS compressor and optimizer](#) based on csstidy. If you want to create a linear or radial gradient as background or border, check our [CSS Gradient Generator](#).

Hey! You found this booklet interesting? Support Converting Colors with the new Membership Option!

The pro membership hides all ads, plus gives you double the colors in the color bucket, and more awesome pro features!

[Learn more, Memberships starting at \\$2.50/m!](#)

**Follow me
on Twitter!**

@ConvertingColor