

Converting Colors

XYZ(38.5952, 36.7976, 36.1813)

Have a look what the booklet for
XYZ(38.5952, 36.7976, 36.1813)
contains.

XYZ(38.5439, 36.8349, 36.0887)	3
<i>Conversions</i>	4
<i>Details</i>	6
<i>Harmonies</i>	12
<i>Previews</i>	24
<i>Color Blindness Simulation</i>	28
<i>CSS Examples</i>	31

Color

**XYZ(38.5439, 36.8349,
36.0887)**

Conversions

Conversions Part 1

Format	Color
Hex	BC9C9B
RGB	188, 156, 155
RGB Percent	74%, 61%, 61%
CMY	0.2627, 0.3882, 0.3922
CMYK	0.00, 0.17, 0.18, 0.26
HSL	2°, 20%, 67%
HSV	2°, 18%, 74%
XYZ	38.5439, 36.8349, 36.0887
YIQ	165.4540, 19.3930, 6.4730

Conversions

Conversions Part 2

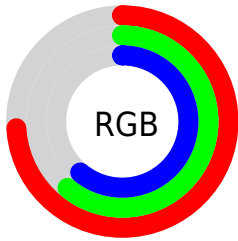
Format	Color
RYB	188, 156, 155
Decimal	12360859
CIELab	67.15, 11.67, 4.96
CIELCh	67, 12.682, 23.009
Yxy	36.8349, 0.3458, 0.3305
Android (android.graphics.Color)	4290550939 (0xFFBC9C9B)
YUV	165.4540, -5.1538, 19.7728
Hunter-Lab	60.6918, 7.1505, 7.2291

Details

The XYZ color **38.5439, 36.8349, 36.0887** is a light color, and the websafe version is hex **CC9999**. A complement of this color would be **40.3646, 46.1388, 54.3555**, and the grayscale version is **36.0006, 37.8754, 41.2463**.

A 20% lighter version of the original color is **72.4591, 70.6045, 70.1306**, and **17.3818, 16.1710, 15.3019** is the 20% darker color. If you saturate the color by 10%, you get **34.2538, 30.5876, 27.4662**, and if you desaturate by 10%, it is **43.5409, 44.1019, 46.1605**.

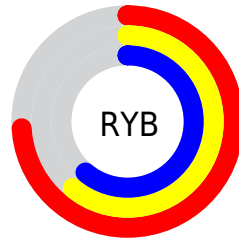
Distribution



Red (74%)

Green (61%)

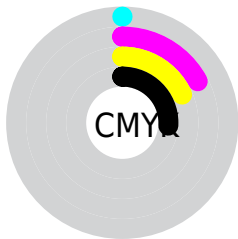
Blue (61%)



Red (74%)

Yellow (61%)

Blue (61%)

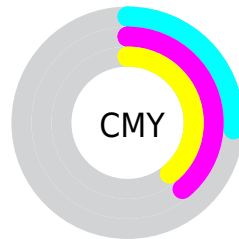


Cyan (0%)

Magenta (17%)

Yellow (18%)

Black (26%)



Cyan (26%)


Magenta (39%)


Yellow (39%)

Brightness & Saturation Gradients

These gradients show how the XYZ color 38.5439, 36.8349, 36.0887 changes by changing the brightness by 10 percent. The first figure shows a shift by +10% for each color and the second figure -10%.


Similar to the brightness gradients but the following saturation gradients show a change of the XYZ color 38.5439, 36.8349, 36.0887 by changing the saturation by 10% instead.


 38.5439, 36.8349,
36.0887


 38.5439, 36.8349,
36.0887

331.1881,
332.5952, 344.3972

 26.5842, 25.0797,
24.2125


 72.2396, 70.3188,
70.3395

 17.3962, 16.1364,
15.2777


 94.7063, 92.8163,
93.5512

 10.6144, 9.6207,
8.8657

121.4060,
119.6633, 121.3785

 5.8736, 5.1482,
4.5581

152.7042,
151.2442, 154.2398

 2.8083, 2.3345,
1.9362

188.9661,
187.9435, 192.5539

 1.0532, 0.7919,
0.5156

230.5572,

 0.0000, 0.0000,

230.1454, 236.7391

0.0000

277.8427,
278.2346, 287.2140

■ 38.5439, 36.8349,
36.0887

■ 38.5439, 36.8349,
36.0887

■ 34.2538, 30.5876,
27.4662

■ 43.5409, 44.1019,
46.1605

■ 30.6359, 25.3098,
20.2241

■ 49.2714, 52.4261,
57.7415

■ 27.6571, 20.9543,
14.2915

■ 55.7646, 61.8491,
70.8911

■ 25.2801, 17.4682,
9.5902

■ 63.0469, 72.4090,
85.6646

■ 23.4640, 14.7933,
6.0337

■ 71.1437, 84.1419,
102.1150

■ 22.1627, 12.8640,
3.5243

■ 74.5492, 89.4314,
107.9406

■ 21.3228, 11.6049,
1.9480

■ 20.8748, 10.9225,
1.1401

■ 20.8012, 10.8156,
0.9913

Harmonies

Analogous

The Analogous color harmony consists of three colors that are next to each other on the color wheel.



38.8304, 36.8349, 41.4164



38.5439, 36.8349, 36.0887



37.2946, 36.8349, 32.1920

Triad

The Triadic color harmony groups three colors that are evenly spaced from another and form a triangle on the color wheel.



38.5439, 36.8349, 36.0887



32.1251, 36.8349, 34.0376



34.5601, 36.8349, 51.6263

Complementary

The Complementary color scheme is a pair of colors which are on the opposite of each other on the color wheel.



38.5439, 36.8349, 36.0887



40.3646, 46.1388, 54.3555

Split Complementary

Split-complementary colors differ from the complementary color scheme. The scheme consists of three colors, the original color and two neighbors of the complement color.



32.8216, 36.8349, 49.2233



38.5439, 36.8349, 36.0887



31.4496, 36.8349, 38.8254

Square

The Square scheme is like the rectangle color scheme, but the four colors are evenly spaced on the color wheel.



38.5439, 36.8349, 36.0887



33.5778, 36.8349, 31.0861



31.6999, 36.8349, 44.4129



36.4834, 36.8349, 50.7232

Rectangle

The Rectangle color scheme consists of four colors that form a rectangle on the color wheel.



38.5439, 36.8349, 36.0887



36.1078, 36.8349, 30.7646



31.6999, 36.8349, 44.4129



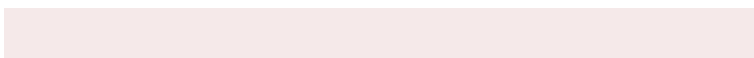
33.9356, 36.8349, 51.1716

Sweetspot

The Sweet Spot groups the original color and five complimentary colors.



38.5449, 36.8366, 36.0895



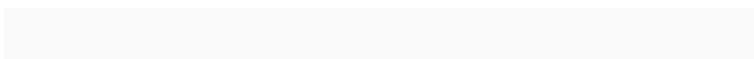
81.3514, 83.4741, 88.5861



41.4786, 37.7417, 52.3657



17.3432, 17.7312, 18.7449



90.7827, 95.5105, 104.0109



18.6292, 19.5994, 21.3438

Same Dimension

The Same Dimension uses a secret algorithm to generate beautiful new colors.



38.5449, 36.8366, 36.0895



66.7610, 62.2546, 59.1793



41.4178, 42.5824, 37.0471



9.5528, 9.5816, 9.9226



14.1724, 7.3836, 0.6782



0.5632, 0.3053, 0.0293

Inverse Universe

The Inverse Universe completely reimagines the original color for something new.



40.3646, 46.1388, 54.3555



70.6647, 82.2122, 98.3703



37.1486, 39.7068, 53.2835



9.7830, 10.7584, 12.2332



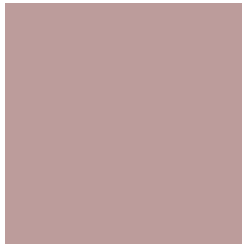
17.6192, 25.3500, 36.3573



0.6980, 1.0087, 1.4268

Previews

White Background



This preview shows how the XYZ color 38.5439, 36.8349, 36.0887 looks on a white background.

Color Contrast Check

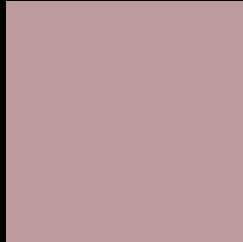
Large Text (above 18pt) WCAG AA × Fail

Any Text WCAG AA × Fail

Large Text (above 18pt) WCAG AAA × Fail

Any Text WCAG AAA × Fail

Black Background



This preview shows how the XYZ color 38.5439, 36.8349, 36.0887 looks on a black background.

Color Contrast Check

Large Text (above 18pt) WCAG AA ✓ Pass

Any Text WCAG AA ✓ Pass

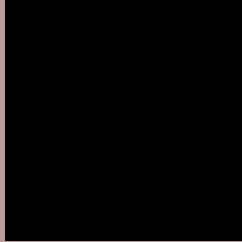
Large Text (above 18pt) WCAG AAA ✓ Pass

Any Text WCAG AAA ✓ Pass

If you want to check with other color combinations, try the [Color Contrast Checker](#).

XYZ 38.5439, 36.8349, 36.0887

Background



This preview shows how black text looks on a background with the XYZ color 38.5439, 36.8349, 36.0887.



This preview shows how white text looks on a background with the XYZ color 38.5439, 36.8349,

Color Blindness Simulation

Color vision deficiency is a very complex topic, and I could not describe the different causes any better than Wikipedia does, so if you want to learn more, you should check out their [article about color blindness](#).

Dichromacy



Original Color

38.5439, 36.8349, 36.0887

Protanopia

35.5037, 37.0224, 38.0757

Deuteranopia

37.6717, 36.8876, 36.1448



Tritanopia

39.4248, 36.6832, 41.0790

Trichromacy



Original Color

38.5439, 36.8349, 36.0887

Protanomaly

36.4216, 36.7242, 37.5166

Deuteranomaly

37.9809, 36.7948, 36.1106

Tritanomaly

39.2292, 36.8701, 39.2315

Monochromacy



Original Color

38.5439, 36.8349, 36.0887

Achromatopsia

35.7637, 37.6262, 40.9749

Achromatomaly

36.5869, 37.2981, 38.9891

CSS Examples

Text

The CSS property to change the color of the text to XYZ 38.5439, 36.8349, 36.0887 is called "color". The color property can be set on classes, ids or directly on the HTML element.

This example shows how text in the color `rgb(188, 156, 155)` looks like.

```
.text, #text, p{  
    color:rgb(188, 156, 155)  
}
```

If you want to add a text shadow in that color use the text-shadow property, you can generate a text shadow directly with our [CSS Text Shadow Generator](#).

Here you see how black text with a 4 pixel rgb(188, 156, 155) colored shadow looks like.

```
.shadow{ text-shadow: 4px 4px 2px rgb(188, 156, 155) }
```

Border

The CSS property to change the border of an element to XYZ 38.5439, 36.8349, 36.0887 is called "border". The border property can be set on classes, ids or directly on the HTML element.

This example shows the color as border, it can be applied via the CSS property "border" or "border-color".

```
.border, #border, table{ border:4px solid rgb(188, 156, 155) }
```


If only the border color should be changed use the property `border-color`.

```
.border{ border-color:rgb(188, 156, 155) }
```

If you want to add a box shadow in that color use:

Here you see how a box with a 4 pixel `rgb(188, 156, 155)` colored shadow looks like.

```
.boxshadow{ -moz-box-shadow:4px 4px 4px  
4px rgb(188, 156, 155); -webkit-box-  
shadow:4px 4px 4px 4px rgb(188, 156, 155);  
box-shadow:4px 4px 4px 4px rgb(188, 156,  
155) }
```

Background

The CSS property to change the background color of an element to XYZ 38.5439, 36.8349, 36.0887 is called "background". The background property can be set on classes, ids or directly on the HTML element.

```
.background, #background, body{  
background: rgb(188, 156, 155) }
```

If only the background color should be changed can be used:

```
.background{ background-color: rgb(188,  
156, 155) }
```

This example shows the color as background, it is applied via the CSS property "background".

To optimize and compress your CSS code, you can use our [online CSS compressor and optimizer](#) based on csstidy. If you want to create a linear or radial gradient as background or border, check our [CSS Gradient Generator](#).

Hey! You found this booklet interesting? Support Converting Colors with the new Membership Option!

The pro membership hides all ads, plus gives you double the colors in the color bucket, and more awesome pro features!

[Learn more, Memberships starting at \\$2.50/m!](#)

**Follow me
on Twitter!**

@ConvertingColor