

Converting Colors

XYZ(38.6347, 36.5596, 35.0461)

Have a look what the booklet for
XYZ(38.6347, 36.5596, 35.0461)
contains.

XYZ(38.7063, 36.6897, 35.1788)	3
<i>Conversions</i>	4
<i>Details</i>	6
<i>Harmonies</i>	12
<i>Previews</i>	24
<i>Color Blindness Simulation</i>	28
<i>CSS Examples</i>	31

Color

**XYZ(38.7063, 36.6897,
35.1788)**

Conversions

Conversions Part 1

Format	Color
Hex	BE9B99
RGB	190, 155, 153
RGB Percent	75%, 61%, 60%
CMY	0.2549, 0.3921, 0.4000
CMYK	0.00, 0.18, 0.19, 0.25
HSL	3°, 22%, 67%
HSV	3°, 19%, 75%
XYZ	38.7063, 36.6897, 35.1788
YIQ	165.2370, 21.5020, 6.7980

Conversions

Conversions Part 2

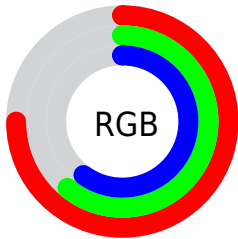
Format	Color
RYB	190, 155, 153
Decimal	12491673
CIELab	67.04, 12.66, 5.94
CIELCh	67, 13.989, 25.136
Yxy	36.6897, 0.3500, 0.3318
Android (android.graphics.Color)	4290681753 (0xFFBE9B99)
YUV	165.2370, -6.0328, 21.7172
Hunter-Lab	60.5720, 8.0627, 7.9662

Details

The XYZ color **38.7063, 36.6897, 35.1788** is a light color, and the websafe version is hex **CC9999**. A complement of this color would be **40.4140, 46.4554, 55.5522**, and the grayscale version is **35.8995, 37.7691, 41.1306**.

A 20% lighter version of the original color is **72.6669, 70.3723, 68.7847**, and **17.5019, 16.0942, 14.7544** is the 20% darker color. If you saturate the color by 10%, you get **34.4889, 30.5693, 26.6374**, and if you desaturate by 10%, it is **43.6208, 43.8037, 45.1863**.

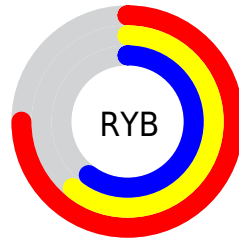
Distribution



Red (75%)

Green (61%)

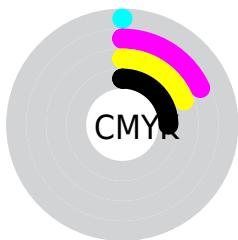
Blue (60%)



Red (75%)

Yellow (61%)

Blue (60%)

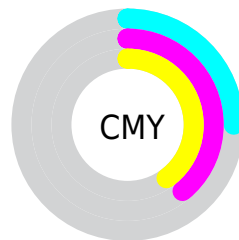


Cyan (0%)

Magenta (18%)

Yellow (19%)

Black (25%)



Cyan (25%)


Magenta (39%)


Yellow (40%)

Brightness & Saturation Gradients


These gradients show how the XYZ color 38.7063, 36.6897, 35.1788 changes by changing the brightness by 10 percent. The first figure shows a shift by +10% for each color and the second figure -10%.


Similar to the brightness gradients but the following saturation gradients show a change of the XYZ color 38.7063, 36.6897, 35.1788 by changing the saturation by 10% instead.


 38.7063, 36.6897,
35.1788


 38.7063, 36.6897,
35.1788


331.8689,
331.9651, 340.2850

 26.7110, 24.9673,
23.5160


 72.4864, 70.0953,
68.9174

 17.4918, 16.0527,
14.7661


 95.0019, 92.5473,
91.8302

 10.6832, 9.5615,
8.5106


121.7548,
119.3446, 119.3301

 5.9199, 5.1092,
4.3309

153.1106,
150.8717, 151.8357

 2.8367, 2.3115,
1.8086

189.4345,
187.5129, 189.7654

 1.0680, 0.7798,
0.4336

231.0920,

 0.0000, 0.0000,

229.6526, 233.5379

0.0000

278.4483,
277.6752, 283.5716

■ 38.7063, 36.6897,
35.1788

■ 38.7063, 36.6897,
35.1788

■ 34.4889, 30.5693,
26.6374

■ 43.6208, 43.8037,
45.1863

■ 30.9341, 25.3935,
19.4910

■ 49.2587, 51.9474,
56.7216

■ 28.0092, 21.1167,
13.6663

■ 55.6488, 61.1613,
69.8460

■ 25.6773, 17.6878,
9.0821

■ 62.8173, 71.4823,
84.6164

■ 23.8979, 15.0503,
5.6486

■ 70.7892, 82.9454,
101.0872

■ 22.6252, 13.1409,
3.2635

■ 75.0453, 89.6872,
107.9638

■ 21.8060, 11.8866,
1.8069

■ 21.3632, 11.1942,
1.0635

■ 21.3470, 11.1705,
1.0310

Harmonies

Analogous

The Analogous color harmony consists of three colors that are next to each other on the color wheel.



39.1069, 36.6897, 40.9500



38.7063, 36.6897, 35.1788



37.2622, 36.6897, 31.0910

Triad

The Triadic color harmony groups three colors that are evenly spaced from another and form a triangle on the color wheel.



38.7063, 36.6897, 35.1788



31.6242, 36.6897, 33.6223



34.5269, 36.6897, 52.7885

Complementary

The Complementary color scheme is a pair of colors which are on the opposite of each other on the color wheel.



38.7063, 36.6897, 35.1788



40.4140, 46.4554, 55.5522

Split Complementary

Split-complementary colors differ from the complementary color scheme. The scheme consists of three colors, the original color and two neighbors of the complement color.



32.5871, 36.6897, 50.3470



38.7063, 36.6897, 35.1788



30.9553, 36.6897, 38.9641

Square

The Square scheme is like the rectangle color scheme, but the four colors are evenly spaced on the color wheel.



38.7063, 36.6897, 35.1788



33.1645, 36.6897, 30.2584



31.3005, 36.6897, 45.1317



36.6381, 36.6897, 51.5145

Rectangle

The Rectangle color scheme consists of four colors that form a rectangle on the color wheel.



38.7063, 36.6897, 35.1788



35.9318, 36.6897, 29.6666



31.3005, 36.6897, 45.1317



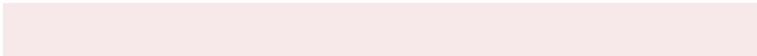
33.8341, 36.6897, 52.3685

Sweetspot

The Sweet Spot groups the original color and five complimentary colors.



38.7073, 36.6914, 35.1796



82.3467, 84.1480, 88.6256



41.7201, 37.3674, 52.6758



17.9381, 18.2694, 19.1660



92.9021, 97.7402, 106.4391



19.4759, 20.4902, 22.3138

Same Dimension

The Same Dimension uses a secret algorithm to generate beautiful new colors.



38.7073, 36.6914, 35.1796



67.0154, 61.9547, 57.4053



41.9961, 43.2690, 36.2758



9.5705, 9.6170, 9.9285



14.2131, 7.4651, 0.6918



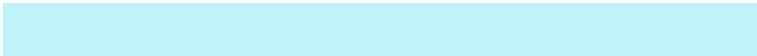
0.5711, 0.3211, 0.0319

Inverse Universe

The Inverse Universe completely reimagines the original color for something new.



40.4140, 46.4554, 55.5522



70.6246, 82.6072, 100.5016



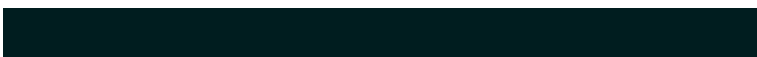
36.7408, 39.1089, 54.3278



9.7631, 10.7186, 12.2265



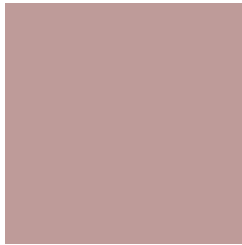
17.0132, 24.1381, 36.1553



0.6801, 0.9728, 1.4208

Previews

White Background



This preview shows how the XYZ color 38.7063, 36.6897, 35.1788 looks on a white background.

Color Contrast Check

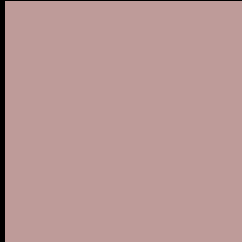
Large Text (above 18pt) WCAG AA × Fail

Any Text WCAG AA × Fail

Large Text (above 18pt) WCAG AAA × Fail

Any Text WCAG AAA × Fail

Black Background



This preview shows how the XYZ color 38.7063, 36.6897, 35.1788 looks on a black background.

Color Contrast Check

Large Text (above 18pt) WCAG AA ✓ Pass

Any Text WCAG AA ✓ Pass

Large Text (above 18pt) WCAG AAA ✓ Pass

Any Text WCAG AAA ✓ Pass

If you want to check with other color combinations, try the [Color Contrast Checker](#).

XYZ 38.7063, 36.6897, 35.1788

Background



This preview shows how black text looks on a background with the XYZ color 38.7063, 36.6897, 35.1788.



This preview shows how white text looks on a background with the XYZ color 38.7063, 36.6897,

Color Blindness Simulation

Color vision deficiency is a very complex topic, and I could not describe the different causes any better than Wikipedia does, so if you want to learn more, you should check out their [article about color blindness](#).

Dichromacy



Original Color

38.7063, 36.6897, 35.1788

Protanopia

35.3314, 36.9535, 37.1689

Deuteranopia

37.4228, 36.7880, 34.8342



Tritanopia

39.6686, 36.5754, 40.5663

Trichromacy



Original Color

38.7063, 36.6897, 35.1788

Protanomaly

36.4761, 36.7720, 36.6277

Deuteranomaly

37.9742, 36.8200, 34.8113

Tritanomaly

39.4745, 36.7608, 38.7332

Monochromacy



Original Color

38.7063, 36.6897, 35.1788

Achromatopsia

35.7637, 37.6262, 40.9749

Achromatomaly

36.6335, 37.0616, 38.9410

CSS Examples

Text

The CSS property to change the color of the text to XYZ 38.7063, 36.6897, 35.1788 is called "color". The color property can be set on classes, ids or directly on the HTML element.

This example shows how text in the color `rgb(190, 155, 153)` looks like.

```
.text, #text, p{  
    color:rgb(190, 155, 153)  
}
```

If you want to add a text shadow in that color use the text-shadow property, you can generate a text shadow directly with our [CSS Text Shadow Generator](#).

Here you see how black text with a 4 pixel rgb(190, 155, 153) colored shadow looks like.

```
.shadow{ text-shadow: 4px 4px 2px rgb(190, 155, 153) }
```

Border

The CSS property to change the border of an element to XYZ 38.7063, 36.6897, 35.1788 is called "border". The border property can be set on classes, ids or directly on the HTML element.

This example shows the color as border, it can be applied via the CSS property "border" or "border-color".

```
.border, #border, table{ border:4px solid rgb(190, 155, 153) }
```


If only the border color should be changed use the property `border-color`.

```
.border{ border-color:rgb(190, 155, 153) }
```

If you want to add a box shadow in that color use:

Here you see how a box with a 4 pixel `rgb(190, 155, 153)` colored shadow looks like.

```
.boxshadow{ -moz-box-shadow:4px 4px 4px  
4px rgb(190, 155, 153); -webkit-box-  
shadow:4px 4px 4px 4px rgb(190, 155, 153);  
box-shadow:4px 4px 4px 4px rgb(190, 155,  
153) }
```

Background

The CSS property to change the background color of an element to XYZ 38.7063, 36.6897, 35.1788 is called "background". The background property can be set on classes, ids or directly on the HTML element.

```
.background, #background, body{  
background: rgb(190, 155, 153) }
```

If only the background color should be changed can be used:

```
.background{ background-color: rgb(190,  
155, 153) }
```

This example shows the color as background, it is applied via the CSS property "background".

To optimize and compress your CSS code, you can use our [online CSS compressor and optimizer](#) based on csstidy. If you want to create a linear or radial gradient as background or border, check our [CSS Gradient Generator](#).

Hey! You found this booklet interesting? Support Converting Colors with the new Membership Option!

The pro membership hides all ads, plus gives you double the colors in the color bucket, and more awesome pro features!

[Learn more, Memberships starting at \\$2.50/m!](#)

**Follow me
on Twitter!**

@ConvertingColor