

Converting Colors

XYZ(38.7032, 36.2057, 35.1268)

Have a look what the booklet for
XYZ(38.7032, 36.2057, 35.1268)
contains.

XYZ(38.6269, 36.1587, 35.0805)	3
<i>Conversions</i>	4
<i>Details</i>	6
<i>Harmonies</i>	12
<i>Previews</i>	24
<i>Color Blindness Simulation</i>	28
<i>CSS Examples</i>	31

Color

**XYZ(38.6269, 36.1587,
35.0805)**

Conversions

Conversions Part 1

Format	Color
Hex	BF9999
RGB	191, 153, 153
RGB Percent	75%, 60%, 60%
CMY	0.2510, 0.4000, 0.4000
CMYK	0.00, 0.20, 0.20, 0.25
HSL	0°, 23%, 67%
HSV	0°, 20%, 75%
XYZ	38.6269, 36.1587, 35.0805
YIQ	164.3620, 22.6480, 8.0560

Conversions

Conversions Part 2

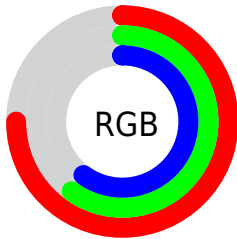
Format	Color
R_{YB}	191, 153, 153
Decimal	12556697
CIE Lab	66.64, 14.15, 5.38
CIE LCh	67, 15.133, 20.808
Yxy	36.1587, 0.3516, 0.3291
Android (android.graphics.Color)	4290746777 (0xFFBF9999)
YUV	164.3620, -5.6015, 23.3615
Hunter-Lab	60.1321, 9.4314, 7.5032

Details

The XYZ color **38.6269, 36.1587, 35.0805** is a light color, and the websafe version is hex **CC9999**. A complement of this color would be **41.1714, 47.7946, 56.3460**, and the grayscale version is **35.4782, 37.3258, 40.6478**.

A 20% lighter version of the original color is **72.2867, 69.0871, 68.5567**, and **17.4662, 15.7804, 14.6957** is the 20% darker color. If you saturate the color by 10%, you get **34.2944, 29.8192, 26.4663**, and if you desaturate by 10%, it is **43.7143, 43.6032, 45.1930**.

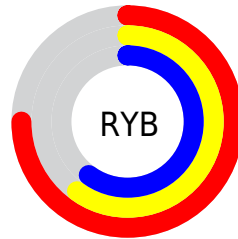
Distribution



Red (75%)

Green (60%)

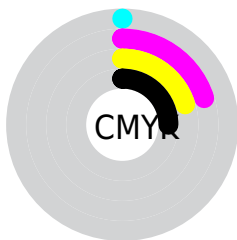
Blue (60%)



Red (75%)

Yellow (60%)

Blue (60%)

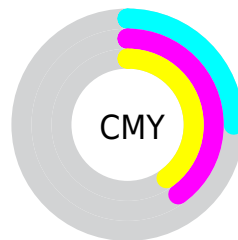


Cyan (0%)

Magenta (20%)

Yellow (20%)

Black (25%)



Cyan (25%)


Magenta (40%)


Yellow (40%)

Brightness & Saturation Gradients


These gradients show how the XYZ color 38.6269, 36.1587, 35.0805 changes by changing the brightness by 10 percent. The first figure shows a shift by +10% for each color and the second figure -10%.


Similar to the brightness gradients but the following saturation gradients show a change of the XYZ color 38.6269, 36.1587, 35.0805 by changing the saturation by 10% instead.


 38.6269, 36.1587,
35.0805


 38.6269, 36.1587,
35.0805

331.5362,
329.6537, 339.8386

 26.6490, 24.5568,
23.4408


 72.3657, 69.2769,
68.7634

 17.4450, 15.7472,
14.7110


 94.8574, 91.5621,
91.6438

 10.6496, 9.3454,
8.4725


121.5843,
118.1770, 119.1082

 5.8973, 4.9672,
4.3066

152.9120,
149.5063, 151.5750

 2.8228, 2.2280,
1.7950

189.2056,
185.9342, 189.4630

 1.0607, 0.7352,
0.4247

230.8306,

 0.0000, 0.0000,

227.8451, 233.1905

0.0000

278.1523,
275.6235, 283.1762

■ 38.6269, 36.1587,
35.0805

■ 38.6269, 36.1587,
35.0805

■ 34.2944, 29.8192,
26.4663

■ 43.7143, 43.6032,
45.1930

■ 30.6779, 24.5273,
19.2770

■ 49.5870, 52.1964,
56.8679

■ 27.7400, 20.2283,
13.4367

■ 56.2772, 61.9860,
70.1682

■ 25.4383, 16.8601,
8.8611

■ 63.8147, 73.0153,
85.1530

■ 23.7257, 14.3541,
5.4569

■ 72.2276, 85.3256,
101.8782

■ 22.5488, 12.6318,
3.1175

■ 75.2961, 89.8165,
107.9755

■ 21.8444, 11.6010,
1.7175

■ 21.4895, 11.0816,
1.0121

■ 21.4862, 11.0768,
1.0056

Harmonies

Analogous

The Analogous color harmony consists of three colors that are next to each other on the color wheel.



38.8755, 36.1587, 41.4087



38.6269, 36.1587, 35.0805



37.2106, 36.1587, 30.4268

Triad

The Triadic color harmony groups three colors that are evenly spaced from another and form a triangle on the color wheel.



38.6269, 36.1587, 35.0805



31.0836, 36.1587, 31.9638



33.6728, 36.1587, 53.0975

Complementary

The Complementary color scheme is a pair of colors which are on the opposite of each other on the color wheel.



38.6269, 36.1587, 35.0805



41.1714, 47.7946, 56.3460

Split Complementary

Split-complementary colors differ from the complementary color scheme. The scheme consists of three colors, the original color and two neighbors of the complement color.



31.6735, 36.1587, 49.9151



38.6269, 36.1587, 35.0805



30.2227, 36.1587, 37.4006

Square

The Square scheme is like the rectangle color scheme, but the four colors are evenly spaced on the color wheel.



38.6269, 36.1587, 35.0805



32.8352, 36.1587, 28.7703



30.4338, 36.1587, 43.9971



35.9473, 36.1587, 52.2994

Rectangle

The Rectangle color scheme consists of four colors that form a rectangle on the color wheel.



38.6269, 36.1587, 35.0805



35.8278, 36.1587, 28.6722



30.4338, 36.1587, 43.9971



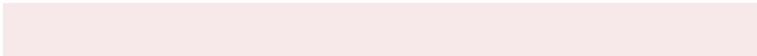
32.9479, 36.1587, 52.4458

Sweetspot

The Sweet Spot groups the original color and five complimentary colors.



38.6279, 36.1603, 35.0813



82.1197, 83.6939, 88.5499



42.2815, 37.6210, 54.3238



17.8834, 18.1598, 19.1478



92.9021, 97.7402, 106.4391



19.4759, 20.4902, 22.3138

Same Dimension

The Same Dimension uses a secret algorithm to generate beautiful new colors.



38.6279, 36.1603, 35.0813



65.5382, 59.4307, 55.5861



41.9886, 42.8818, 36.2015



9.5303, 9.5365, 9.9151



14.1204, 7.2795, 0.6609



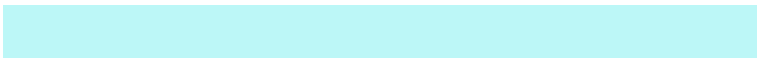
0.5531, 0.2852, 0.0259

Inverse Universe

The Inverse Universe completely reimagines the original color for something new.



41.1714, 47.7946, 56.3460



70.9445, 84.1593, 100.7843



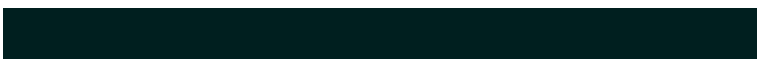
37.2939, 40.0395, 55.0535



9.8086, 10.8094, 12.2417



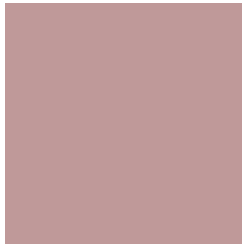
18.4218, 26.9553, 36.6249



0.7216, 1.0559, 1.4346

Previews

White Background



This preview shows how the XYZ color 38.6269, 36.1587, 35.0805 looks on a white background.

Color Contrast Check

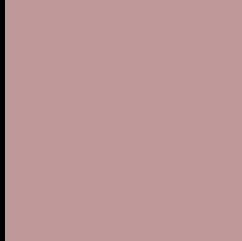
Large Text (above 18pt) WCAG AA × Fail

Any Text WCAG AA × Fail

Large Text (above 18pt) WCAG AAA × Fail

Any Text WCAG AAA × Fail

Black Background



This preview shows how the XYZ color 38.6269, 36.1587, 35.0805 looks on a black background.

Color Contrast Check

Large Text (above 18pt) WCAG AA ✓ Pass

Any Text WCAG AA ✓ Pass

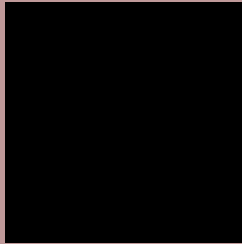
Large Text (above 18pt) WCAG AAA ✓ Pass

Any Text WCAG AAA ✓ Pass

If you want to check with other color combinations, try the [Color Contrast Checker](#).

XYZ 38.6269, 36.1587, 35.0805

Background



This preview shows how black text looks on a background with the XYZ color 38.6269, 36.1587, 35.0805.



This preview shows how white text looks on a background with the XYZ color 38.6269, 36.1587,

Color Blindness Simulation

Color vision deficiency is a very complex topic, and I could not describe the different causes any better than Wikipedia does, so if you want to learn more, you should check out their [article about color blindness](#).

Dichromacy



Original Color

38.6269, 36.1587, 35.0805

Protanopia

34.8178, 36.4163, 37.5417

Deuteranopia

37.0159, 36.3260, 34.7664



Tritanopia

39.4157, 35.9840, 39.5185

Trichromacy



Original Color

38.6269, 36.1587, 35.0805

Protanomaly

36.0781, 36.3105, 36.5596

Deuteranomaly

37.5635, 36.3582, 34.7438

Tritanomaly

39.2245, 36.1661, 37.7143

Monochromacy



Original Color

38.6269, 36.1587, 35.0805

Achromatopsia

35.2861, 37.1238, 40.4278

Achromatomaly

36.3715, 36.6783, 38.4203

CSS Examples

Text

The CSS property to change the color of the text to XYZ 38.6269, 36.1587, 35.0805 is called "color". The color property can be set on classes, ids or directly on the HTML element.

This example shows how text in the color `rgb(191, 153, 153)` looks like.

```
.text, #text, p{  
    color:rgb(191, 153, 153)  
}
```

If you want to add a text shadow in that color use the text-shadow property, you can generate a text shadow directly with our [CSS Text Shadow Generator](#).

Here you see how black text with a 4 pixel rgb(191, 153, 153) colored shadow looks like.

```
.shadow{ text-shadow: 4px 4px 2px rgb(191, 153, 153) }
```

Border

The CSS property to change the border of an element to XYZ 38.6269, 36.1587, 35.0805 is called "border". The border property can be set on classes, ids or directly on the HTML element.

This example shows the color as border, it can be applied via the CSS property "border" or "border-color".

```
.border, #border, table{ border:4px solid rgb(191, 153, 153) }
```


If only the border color should be changed use the property `border-color`.

```
.border{ border-color:rgb(191, 153, 153) }
```

If you want to add a box shadow in that color use:

Here you see how a box with a 4 pixel `rgb(191, 153, 153)` colored shadow looks like.

```
.boxshadow{ -moz-box-shadow:4px 4px 4px  
4px rgb(191, 153, 153); -webkit-box-  
shadow:4px 4px 4px 4px rgb(191, 153, 153);  
box-shadow:4px 4px 4px 4px rgb(191, 153,  
153) }
```

Background

The CSS property to change the background color of an element to XYZ 38.6269, 36.1587, 35.0805 is called "background". The background property can be set on classes, ids or directly on the HTML element.

```
.background, #background, body{  
background: rgb(191, 153, 153) }
```

If only the background color should be changed can be used:

```
.background{ background-color: rgb(191,  
153, 153) }
```

This example shows the color as background, it is applied via the CSS property "background".

To optimize and compress your CSS code, you can use our [online CSS compressor and optimizer](#) based on csstidy. If you want to create a linear or radial gradient as background or border, check our [CSS Gradient Generator](#).

Hey! You found this booklet interesting? Support Converting Colors with the new Membership Option!

The pro membership hides all ads, plus gives you double the colors in the color bucket, and more awesome pro features!

[Learn more, Memberships starting at \\$2.50/m!](#)

**Follow me
on Twitter!**

@ConvertingColor