

Converting Colors

XYZ(38.7079, 36.5823, 37.0923)

Have a look what the booklet for
XYZ(38.7079, 36.5823, 37.0923)
contains.

XYZ(38.7934, 36.6958, 36.9367)	3
<i>Conversions</i>	4
<i>Details</i>	6
<i>Harmonies</i>	12
<i>Previews</i>	24
<i>Color Blindness Simulation</i>	28
<i>CSS Examples</i>	31

Color

**XYZ(38.7934, 36.6958,
36.9367)**

Conversions

Conversions Part 1

Format	Color
Hex	BD9B9D
RGB	189, 155, 157
RGB Percent	74%, 61%, 62%
CMY	0.2588, 0.3921, 0.3843
CMYK	0.00, 0.18, 0.17, 0.26
HSL	356°, 20%, 67%
HSV	356°, 18%, 74%
XYZ	38.7934, 36.6958, 36.9367
YIQ	165.3940, 19.6220, 7.8300

Conversions

Conversions Part 2

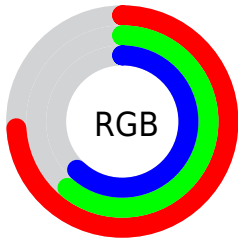
Format	Color
R _{YB}	189, 155, 157
Decimal	12426141
CIE Lab	67.05, 12.92, 3.70
CIE LCh	67, 13.442, 15.982
Yxy	36.6958, 0.3451, 0.3264
Android (android.graphics.Color)	4290616221 (0xFFBD9B9D)
YUV	165.3940, -4.1382, 20.7025
Hunter-Lab	60.5771, 8.3011, 6.2520

Details

The XYZ color **38.7934, 36.6958, 36.9367** is a light color, and the websafe version is hex **CC9999**. A complement of this color would be **40.6862, 46.9525, 53.9342**, and the grayscale version is **35.9669, 37.8399, 41.2077**.

A 20% lighter version of the original color is **72.9363, 70.4395, 72.0394**, and **17.5435, 16.0921, 15.8171** is the 20% darker color. If you saturate the color by 10%, you get **34.4809, 30.3269, 28.5434**, and if you desaturate by 10%, it is **43.8214, 44.1411, 46.6605**.

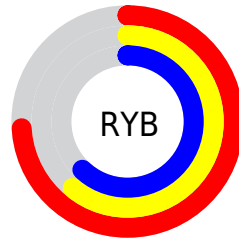
Distribution



Red (74%)

Green (61%)

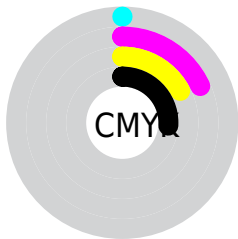
Blue (62%)



Red (74%)

Yellow (61%)

Blue (62%)

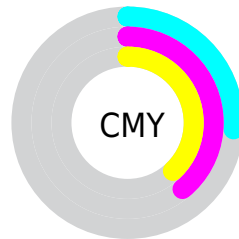


Cyan (0%)

Magenta (18%)

Yellow (17%)

Black (26%)



Cyan (26%)


Magenta (39%)


Yellow (38%)

Brightness & Saturation Gradients


These gradients show how the XYZ color 38.7934, 36.6958, 36.9367 changes by changing the brightness by 10 percent. The first figure shows a shift by +10% for each color and the second figure -10%.


Similar to the brightness gradients but the following saturation gradients show a change of the XYZ color 38.7934, 36.6958, 36.9367 by changing the saturation by 10% instead.


 38.7934, 36.6958,
36.9367


 38.7934, 36.6958,
36.9367


332.2336,
331.9916, 348.1968

 26.7790, 24.9721,
24.8631


 72.6187, 70.1047,
71.6607

 17.5431, 16.0562,
15.7570


 95.1603, 92.5586,
95.1481

 10.7201, 9.5640,
9.1999


121.9418,
119.3580, 123.2772

 5.9449, 5.1108,
4.7732

153.3284,
150.8873, 156.4665

 2.8519, 2.3124,
2.0584

189.6855,
187.5310, 195.1346

 1.0759, 0.7803,
0.5908

231.3786,

 0.0048, 0.0000,

229.6733, 239.7000

0.0000

278.7728,
277.6987, 290.5812

■ 0.0000, 0.0000,
0.0000

■ 38.7934, 36.6958,
36.9367

■ 38.7934, 36.6958,
36.9367

■ 34.4809, 30.3269,
28.5434

■ 43.8214, 44.1411,
46.6605

■ 30.8486, 24.9800,
21.4206

■ 49.5922, 52.7041,
57.7666

■ 27.8626, 20.6033,
15.5070

■ 56.1353, 62.4300,
70.3071

■ 25.4850, 17.1387,
10.7355

■ 63.4778, 73.3601,
84.3305

■ 23.6738, 14.5217,
7.0323

■ 71.6454, 85.5336,
99.8831

■ 22.3818, 12.6794,
4.3150

■ 74.7964, 89.5589,
107.9521

■ 21.5541, 11.5269,
2.4892

■ 21.1117, 10.9351,
1.4381

■ 21.0474, 10.8433,
1.3033

Harmonies

Analogous

The Analogous color harmony consists of three colors that are next to each other on the color wheel.



38.8308, 36.6958, 42.7436



38.7934, 36.6958, 36.9367



37.6803, 36.6958, 32.3976

Triad

The Triadic color harmony groups three colors that are evenly spaced from another and form a triangle on the color wheel.



38.7934, 36.6958, 36.9367



32.1284, 36.6958, 32.6353



33.9352, 36.6958, 51.8973

Complementary

The Complementary color scheme is a pair of colors which are on the opposite of each other on the color wheel.



38.7934, 36.6958, 36.9367



40.6862, 46.9525, 53.9342

Split Complementary

Split-complementary colors differ from the complementary color scheme. The scheme consists of three colors, the original color and two neighbors of the complement color.



32.2187, 36.6958, 48.6059



38.7934, 36.6958, 36.9367



31.2034, 36.6958, 37.2914

Square

The Square scheme is like the rectangle color scheme, but the four colors are evenly spaced on the color wheel.



38.7934, 36.6958, 36.9367



33.8076, 36.6958, 30.0849



31.2358, 36.6958, 43.1344



35.9713, 36.6958, 51.7786

Rectangle

The Rectangle color scheme consists of four colors that form a rectangle on the color wheel.



38.7934, 36.6958, 36.9367



36.5020, 36.6958, 30.5335



31.2358, 36.6958, 43.1344



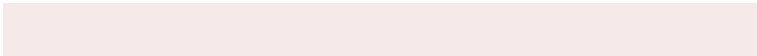
33.3034, 36.6958, 51.1401

Sweetspot

The Sweet Spot groups the original color and five complimentary colors.



38.7944, 36.6975, 36.9375



81.3488, 83.3047, 89.0917



41.3360, 37.6496, 53.2329



17.3426, 17.6901, 18.8676



90.7827, 95.5105, 104.0109



18.6292, 19.5994, 21.3438

Same Dimension

The Same Dimension uses a secret algorithm to generate beautiful new colors.



38.7944, 36.6975, 36.9375



65.9547, 60.5136, 59.3061



41.2285, 41.8362, 36.9146



9.5523, 9.5452, 10.0313



14.1711, 7.2996, 0.9287



0.5629, 0.2891, 0.0777

Inverse Universe

The Inverse Universe completely reimagines the original color for something new.



38.7944, 36.6975, 36.9375



65.9547, 60.5136, 59.3061



37.8919, 41.0193, 54.0648



9.5523, 9.5452, 10.0313



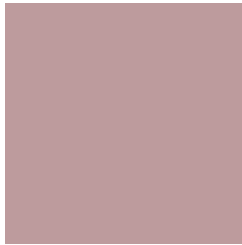
14.1711, 7.2996, 0.9287



0.5629, 0.2891, 0.0777

Previews

White Background



This preview shows how the XYZ color 38.7934, 36.6958, 36.9367 looks on a white background.

Color Contrast Check

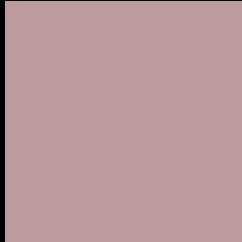
Large Text (above 18pt) WCAG AA × Fail

Any Text WCAG AA × Fail

Large Text (above 18pt) WCAG AAA × Fail

Any Text WCAG AAA × Fail

Black Background



This preview shows how the XYZ color 38.7934, 36.6958, 36.9367 looks on a black background.

Color Contrast Check

Large Text (above 18pt) WCAG AA ✓ Pass

Any Text WCAG AA ✓ Pass

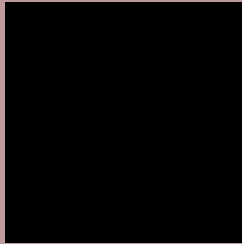
Large Text (above 18pt) WCAG AAA ✓ Pass

Any Text WCAG AAA ✓ Pass

If you want to check with other color combinations, try the [Color Contrast Checker](#).

XYZ 38.7934, 36.6958, 36.9367

Background



This preview shows how black text looks on a background with the XYZ color 38.7934, 36.6958, 36.9367.



This preview shows how white text looks on a background with the XYZ color 38.7934, 36.6958,

Color Blindness Simulation

Color vision deficiency is a very complex topic, and I could not describe the different causes any better than Wikipedia does, so if you want to learn more, you should check out their [article about color blindness](#).

Dichromacy



Original Color

38.7934, 36.6958, 36.9367

Protanopia

35.4666, 36.9831, 38.9874

Deuteranopia

37.5190, 36.7991, 36.5780



Tritanopia

39.6737, 36.8115, 41.0907

Trichromacy



Original Color

38.7934, 36.6958, 36.9367

Protanomaly

36.5952, 36.7936, 38.4308

Deuteranomaly

38.0653, 36.8285, 36.5548

Tritanomaly

39.4017, 36.7027, 39.6580

Monochromacy



Original Color

38.7934, 36.6958, 36.9367

Achromatopsia

35.7637, 37.6262, 40.9749

Achromatomaly

36.7220, 37.0970, 39.4074

CSS Examples

Text

The CSS property to change the color of the text to XYZ 38.7934, 36.6958, 36.9367 is called "color". The color property can be set on classes, ids or directly on the HTML element.

This example shows how text in the color `rgb(189, 155, 157)` looks like.

```
.text, #text, p{  
    color:rgb(189, 155, 157)  
}
```

If you want to add a text shadow in that color use the text-shadow property, you can generate a text shadow directly with our [CSS Text Shadow Generator](#).

Here you see how black text with a 4 pixel rgb(189, 155, 157) colored shadow looks like.

```
.shadow{ text-shadow: 4px 4px 2px rgb(189, 155, 157) }
```

Border

The CSS property to change the border of an element to XYZ 38.7934, 36.6958, 36.9367 is called "border". The border property can be set on classes, ids or directly on the HTML element.

This example shows the color as border, it can be applied via the CSS property "border" or "border-color".

```
.border, #border, table{ border:4px solid rgb(189, 155, 157) }
```


If only the border color should be changed use the property `border-color`.

```
.border{ border-color:rgb(189, 155, 157) }
```

If you want to add a box shadow in that color use:

Here you see how a box with a 4 pixel `rgb(189, 155, 157)` colored shadow looks like.

```
.boxshadow{ -moz-box-shadow:4px 4px 4px  
4px rgb(189, 155, 157); -webkit-box-  
shadow:4px 4px 4px 4px rgb(189, 155, 157);  
box-shadow:4px 4px 4px 4px rgb(189, 155,  
157) }
```

Background

The CSS property to change the background color of an element to XYZ 38.7934, 36.6958, 36.9367 is called "background". The background property can be set on classes, ids or directly on the HTML element.

```
.background, #background, body{  
background: rgb(189, 155, 157) }
```

If only the background color should be changed can be used:

```
.background{ background-color: rgb(189,  
155, 157) }
```

This example shows the color as background, it is applied via the CSS property "background".

To optimize and compress your CSS code, you can use our [online CSS compressor and optimizer](#) based on csstidy. If you want to create a linear or radial gradient as background or border, check our [CSS Gradient Generator](#).

Hey! You found this booklet interesting? Support Converting Colors with the new Membership Option!

The pro membership hides all ads, plus gives you double the colors in the color bucket, and more awesome pro features!

[Learn more, Memberships starting at \\$2.50/m!](#)

**Follow me
on Twitter!**

@ConvertingColor