

Converting Colors

XYZ(38.7625, 37.5170, 21.7215)

Have a look what the booklet for
XYZ(38.7625, 37.5170, 21.7215)
contains.

XYZ(38.7625, 37.5170, 21.7215)	3
<i>Conversions</i>	4
<i>Details</i>	6
<i>Harmonies</i>	12
<i>Previews</i>	24
<i>Color Blindness Simulation</i>	28
<i>CSS Examples</i>	31

Color

**XYZ(38.7625, 37.5170,
21.7215)**

Conversions

Conversions Part 1

Format	Color
Hex	C79D74
RGB	199, 157, 116
RGB Percent	78%, 62%, 45%
CMY	0.2196, 0.3843, 0.5451
CMYK	0.00, 0.21, 0.42, 0.22
HSL	30°, 43%, 62%
HSV	30°, 42%, 78%
XYZ	38.7625, 37.5170, 21.7215
YIQ	164.8840, 38.1930, -3.8470

Conversions

Conversions Part 2

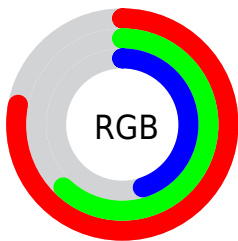
Format	Color
RYB	199, 197, 116
Decimal	13081972
CIELab	67.66, 10.17, 27.38
CIElCh	68, 29.213, 69.621
Yxy	37.5170, 0.3955, 0.3828
Android (android.graphics.Color)	4291272052 (0xFFC79D74)
YUV	164.8840, -24.0998, 29.9197
Hunter-Lab	61.2511, 5.7735, 21.8498

Details

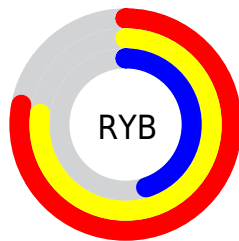
The XYZ color **38.7625, 37.5170, 21.7215** is a light color, and the websafe version is hex **CC9966**. A complement of this color would be **29.7376, 32.2890, 58.6977**, and the grayscale version is **35.8084, 37.6732, 41.0261**.

A 20% lighter version of the original color is **71.8514, 71.1741, 46.9968**, and **17.4948, 16.5530, 7.5832** is the 20% darker color. If you saturate the color by 10%, you get **36.0930, 33.8362, 15.7196**, and if you desaturate by 10%, it is **41.8223, 41.5814, 29.0776**.

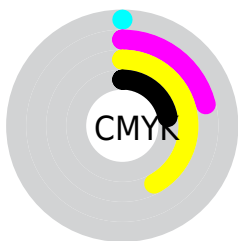
Distribution



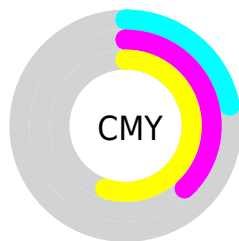
- Red (78%)
- Green (62%)
- Blue (45%)



- Red (78%)
- Yellow (77%)
- Blue (45%)



- Cyan (0%)
- Magenta (21%)
- Yellow (42%)
- Black (22%)



- Cyan (22%)
- Magenta (38%)
- Yellow (55%)

Brightness & Saturation Gradients

These gradients show how the XYZ color 38.7625, 37.5170, 21.7215 changes by changing the brightness by 10 percent. The first figure shows a shift by +10% for each color and the second figure -10%.

Similar to the brightness gradients but the following saturation gradients show a change of the XYZ color 38.7625, 37.5170, 21.7215 by changing the saturation by 10% instead.

■ 38.7625, 37.5170,
21.7215

■ 38.7625, 37.5170,
21.7215

332.1043,
335.5435, 273.9943

■ 26.7549, 25.6080,
13.4560

■ 72.5718, 71.3672,
47.1815

■ 17.5249, 16.5306,
7.6089

■ 95.1041, 94.0773,
65.2132

■ 10.7070, 9.9004,
3.7616

■ 121.8755,
121.1565, 87.3374

■ 5.9360, 5.3330,
1.4955

153.2512,
152.9892, 113.9725

■ 2.8465, 2.4439,
0.2146

189.5965,
189.9599, 145.5373

■ 1.0731, 0.8484,
0.0000

231.2769,

■ 0.0024, 0.0000,

232.4529, 182.4501

0.0000

278.6577,
280.8526, 225.1296

■ 0.0000, 0.0000,
0.0000

■ 38.7625, 37.5170,
21.7215

■ 38.7625, 37.5170,
21.7215

■ 36.0930, 33.8362,
15.7196

■ 41.8223, 41.5814,
29.0776

■ 33.7915, 30.5204,
10.9843

■ 45.2874, 46.0364,
37.8634

■ 31.8378, 27.5574,
7.4213

■ 49.1753, 50.8953,
48.1515

■ 30.2076, 24.9317,
4.9216

■ 53.5015, 56.1694,
60.0089

■ 28.8729, 22.6259,
3.3556

■ 58.2809, 61.8691,
73.4985

■ 27.9501, 20.9360,
2.5679

■ 63.5272, 68.0048,
88.6796

■ 69.2055, 74.5668,
105.3530

■ 72.0483, 80.2525,
106.3007

■ 75.0550, 86.2659,
107.3029

Harmonies

Analogous

The Analogous color harmony consists of three colors that are next to each other on the color wheel.



42.7593, 37.5170, 26.9786



38.7625, 37.5170, 21.7215



34.2300, 37.5170, 20.9406

Triad

The Triadic color harmony groups three colors that are evenly spaced from another and form a triangle on the color wheel.



38.7625, 37.5170, 21.7215



27.7789, 37.5170, 45.1396



41.4756, 37.5170, 63.1046

Complementary

The Complementary color scheme is a pair of colors which are on the opposite of each other on the color wheel.



38.7625, 37.5170, 21.7215



29.7376, 32.2890, 58.6977

Split Complementary

Split-complementary colors differ from the complementary color scheme. The scheme consists of three colors, the original color and two neighbors of the complement color.



37.1268, 37.5170, 70.5307



38.7625, 37.5170, 21.7215



29.3914, 37.5170, 58.8089

Square

The Square scheme is like the rectangle color scheme, but the four colors are evenly spaced on the color wheel.



38.7625, 37.5170, 21.7215



28.1364, 37.5170, 32.8021



32.7253, 37.5170, 68.8115



44.4149, 37.5170, 50.1162

Rectangle

The Rectangle color scheme consists of four colors that form a rectangle on the color wheel.



38.7625, 37.5170, 21.7215



31.5447, 37.5170, 22.8497



32.7253, 37.5170, 68.8115



40.1158, 37.5170, 66.4465

Sweetspot

The Sweet Spot groups the original color and five complimentary colors.



38.7634, 37.5188, 21.7223



85.0454, 87.8073, 81.4680



36.0466, 27.1324, 36.0853



17.8682, 18.3783, 16.5431



0.0000, 0.0000, 0.0000



20.3446, 21.4041, 23.3091

Same Dimension

The Same Dimension uses a secret algorithm to generate beautiful new colors.



38.7634, 37.5188, 21.7223



63.6230, 59.8445, 28.4478



46.8121, 53.6161, 24.4051



11.0593, 11.4878, 11.1972



18.0600, 13.6371, 1.6804



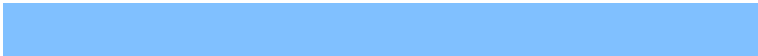
0.9276, 0.7906, 0.1037

Inverse Universe

The Inverse Universe completely reimagines the original color for something new.



29.7376, 32.2890, 58.6977



45.7291, 49.4746, 101.7471



23.9176, 20.6491, 56.7577



10.4928, 11.1596, 13.5185



9.6896, 8.7730, 35.9270



0.5312, 0.5602, 1.7253

Previews

White Background



This preview shows how the XYZ color 38.7625, 37.5170, 21.7215 looks on a white background.

Color Contrast Check

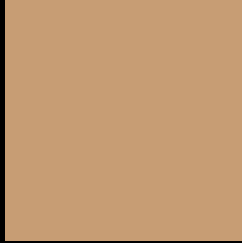
Large Text (above 18pt) WCAG AA × Fail

Any Text WCAG AA × Fail

Large Text (above 18pt) WCAG AAA × Fail

Any Text WCAG AAA × Fail

Black Background



This preview shows how the XYZ color 38.7625, 37.5170, 21.7215 looks on a black background.

Color Contrast Check

Large Text (above 18pt) WCAG AA ✓ Pass

Any Text WCAG AA ✓ Pass

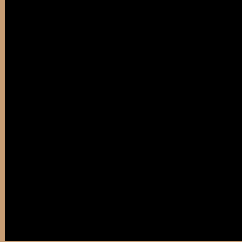
Large Text (above 18pt) WCAG AAA ✓ Pass

Any Text WCAG AAA ✓ Pass

If you want to check with other color combinations, try the [Color Contrast Checker](#).

XYZ 38.7625, 37.5170, 21.7215

Background



This preview shows how black text looks on a background with the XYZ color 38.7625, 37.5170, 21.7215.



This preview shows how white text looks on a background with the XYZ color 38.7625, 37.5170,

21.7215.

Color Blindness Simulation

Color vision deficiency is a very complex topic, and I could not describe the different causes any better than Wikipedia does, so if you want to learn more, you should check out their [article about color blindness](#).

Dichromacy



Original Color

38.7625, 37.5170, 21.7215

Protanopia

35.1450, 37.7072, 22.8786

Deuteranopia

38.4052, 37.5850, 21.7535



Tritanopia

42.4900, 37.5792, 39.1965

Trichromacy



Original Color

38.7625, 37.5170, 21.7215

Protanomaly

36.4400, 37.5878, 22.4741

Deuteranomaly

38.6679, 37.7204, 21.7657

Tritanomaly

40.8592, 37.3834, 31.8503

Monochromacy



Original Color

38.7625, 37.5170, 21.7215

Achromatopsia

35.7637, 37.6262, 40.9749

Achromatomaly

36.3183, 37.2944, 32.8881

CSS Examples

Text

The CSS property to change the color of the text to XYZ 38.7625, 37.5170, 21.7215 is called "color". The color property can be set on classes, ids or directly on the HTML element.

This example shows how text in the color `rgb(199, 157, 116)` looks like.

```
.text, #text, p{  
    color:rgb(199, 157, 116)  
}
```

If you want to add a text shadow in that color use the text-shadow property, you can generate a text shadow directly with our [CSS Text Shadow Generator](#).

Here you see how black text with a 4 pixel rgb(199, 157, 116) colored shadow looks like.

```
.shadow{ text-shadow: 4px 4px 2px rgb(199, 157, 116) }
```

Border

The CSS property to change the border of an element to XYZ 38.7625, 37.5170, 21.7215 is called "border". The border property can be set on classes, ids or directly on the HTML element.

This example shows the color as border, it can be applied via the CSS property "border" or "border-color".

```
.border, #border, table{ border:4px solid rgb(199, 157, 116) }
```


If only the border color should be changed use the property border-color.

```
.border{ border-color:rgb(199, 157, 116) }
```

If you want to add a box shadow in that color use:

Here you see how a box with a 4 pixel rgb(199, 157, 116) colored shadow looks like.

```
.boxshadow{ -moz-box-shadow:4px 4px 4px  
4px rgb(199, 157, 116); -webkit-box-  
shadow:4px 4px 4px 4px rgb(199, 157, 116);  
box-shadow:4px 4px 4px 4px rgb(199, 157,  
116) }
```

Background

The CSS property to change the background color of an element to XYZ 38.7625, 37.5170, 21.7215 is called "background". The background property can be set on classes, ids or directly on the HTML element.

```
.background, #background, body{  
background: rgb(199, 157, 116) }
```

If only the background color should be changed can be used:

```
.background{ background-color: rgb(199,  
157, 116) }
```

This example shows the color as background, it is applied via the CSS property "background".

To optimize and compress your CSS code, you can use our [online CSS compressor and optimizer](#) based on csstidy. If you want to create a linear or radial gradient as background or border, check our [CSS Gradient Generator](#).

Hey! You found this booklet interesting? Support Converting Colors with the new Membership Option!

The pro membership hides all ads, plus gives you double the colors in the color bucket, and more awesome pro features!

[Learn more, Memberships starting at \\$2.50/m!](#)

**Follow me
on Twitter!**

@ConvertingColor