

Converting Colors

XYZ(38.8713, 36.2732, 36.0110)

Have a look what the booklet for
XYZ(38.8713, 36.2732, 36.0110)
contains.

XYZ(38.7935, 36.2254, 35.9579)	3
<i>Conversions</i>	4
<i>Details</i>	6
<i>Harmonies</i>	12
<i>Previews</i>	24
<i>Color Blindness Simulation</i>	28
<i>CSS Examples</i>	31

Color

**XYZ(38.7935, 36.2254,
35.9579)**

Conversions

Conversions Part 1

Format	Color
Hex	BF999B
RGB	191, 153, 155
RGB Percent	75%, 60%, 61%
CMY	0.2510, 0.4000, 0.3922
CMYK	0.00, 0.20, 0.19, 0.25
HSL	357°, 23%, 67%
HSV	357°, 20%, 75%
XYZ	38.7935, 36.2254, 35.9579
YIQ	164.5900, 22.0060, 8.6780

Conversions

Conversions Part 2

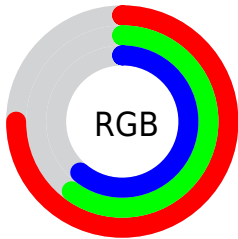
Format	Color
R_{YB}	191, 153, 155
Decimal	12556699
CIE _{Lab}	66.69, 14.46, 4.33
CIE _{LCh}	67, 15.093, 16.670
Yxy	36.2254, 0.3496, 0.3264
Android (android.graphics.Color)	4290746779 (0xFFBF999B)
YUV	164.5900, -4.7279, 23.1616
Hunter-Lab	60.1875, 9.7229, 6.7096

Details

The XYZ color **38.7935, 36.2254, 35.9579** is a light color, and the websafe version is hex **CC9999**. A complement of this color would be **40.9545, 47.7089, 55.1967**, and the grayscale version is **35.5833, 37.4364, 40.7682**.

A 20% lighter version of the original color is **72.5328, 69.1856, 69.8529**, and **17.5666, 15.8206, 15.2245** is the 20% darker color. If you saturate the color by 10%, you get **34.5064, 29.9037, 27.5843**, and if you desaturate by 10%, it is **43.8108, 43.6423, 45.6994**.

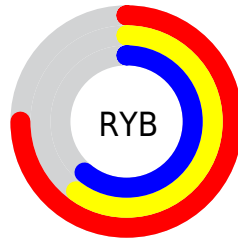
Distribution



Red (75%)

Green (60%)

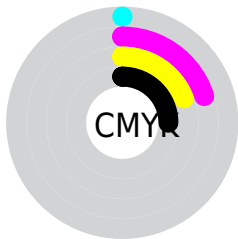
Blue (61%)



Red (75%)

Yellow (60%)

Blue (61%)

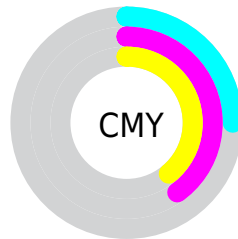


Cyan (0%)

Magenta (20%)

Yellow (19%)

Black (25%)



Cyan (25%)

Magenta (40%)


Yellow (39%)

Brightness & Saturation Gradients


These gradients show how the XYZ color 38.7935, 36.2254, 35.9579 changes by changing the brightness by 10 percent. The first figure shows a shift by +10% for each color and the second figure -10%.


Similar to the brightness gradients but the following saturation gradients show a change of the XYZ color 38.7935, 36.2254, 35.9579 by changing the saturation by 10% instead.


 38.7935, 36.2254,
35.9579


 38.7935, 36.2254,
35.9579

332.2340,
329.9447, 343.8083

 26.7791, 24.6083,
24.1122


 72.6188, 69.3798,
70.1354

 17.5431, 15.7855,
15.2039


 95.1605, 91.6860,
93.3043

 10.7202, 9.3725,
8.8144


121.9420,
118.3239, 121.0847

 5.9449, 4.9849,
4.5252

153.3287,
149.6781, 153.8952

 2.8519, 2.2384,
1.9177

189.6858,
186.1328, 192.1543

 1.0760, 0.7408,
0.5039

231.3789,

 0.0049, 0.0000,

228.0726, 236.2804

0.0000

278.7732,
275.8817, 286.6923

■ 0.0000, 0.0000,
0.0000

■ 38.7935, 36.2254,
35.9579

■ 38.7935, 36.2254,
35.9579

■ 34.5064, 29.9037,
27.5843

■ 43.8108, 43.6423,
45.6994

■ 30.9127, 24.6207,
20.5154

■ 49.5869, 52.1976,
56.8639

■ 27.9768, 20.3223,
14.6860

■ 56.1526, 61.9382,
69.5061

■ 25.6588, 16.9476,
10.0248

■ 63.5361, 72.9069,
83.6772

■ 23.9144, 14.4289,
6.4528

■ 71.7643, 85.1444,
99.4259

■ 22.6936, 12.6893,
3.8818

■ 75.2960, 89.8164,
107.9755

■ 21.9376, 11.6380,
2.2093

■ 21.5443, 11.1033,
1.3014

■ 21.5410, 11.0984,
1.2951

Harmonies

Analogous

The Analogous color harmony consists of three colors that are next to each other on the color wheel.



38.8650, 36.2254, 42.4024



38.7935, 36.2254, 35.9579



37.5206, 36.2254, 31.0149

Triad

The Triadic color harmony groups three colors that are evenly spaced from another and form a triangle on the color wheel.



38.7935, 36.2254, 35.9579



31.3465, 36.2254, 31.4569



33.4325, 36.2254, 52.9311

Complementary

The Complementary color scheme is a pair of colors which are on the opposite of each other on the color wheel.



38.7935, 36.2254, 35.9579



40.9545, 47.7089, 55.1967

Split Complementary

Split-complementary colors differ from the complementary color scheme. The scheme consists of three colors, the original color and two neighbors of the complement color.



31.5162, 36.2254, 49.2750



38.7935, 36.2254, 35.9579



30.3480, 36.2254, 36.6252

Square

The Square scheme is like the rectangle color scheme, but the four colors are evenly spaced on the color wheel.



38.7935, 36.2254, 35.9579



33.1916, 36.2254, 28.6190



30.4088, 36.2254, 43.1470



35.7012, 36.2254, 52.7015

Rectangle

The Rectangle color scheme consists of four colors that form a rectangle on the color wheel.



38.7935, 36.2254, 35.9579



36.1925, 36.2254, 29.0228



30.4088, 36.2254, 43.1470



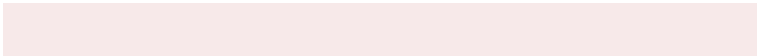
32.7279, 36.2254, 52.1000

Sweetspot

The Sweet Spot groups the original color and five complimentary colors.



38.7945, 36.2270, 35.9587



82.2307, 83.7378, 89.1362



41.6505, 37.2965, 54.2943



17.9101, 18.1704, 19.2892



92.9021, 97.7402, 106.4391



19.4759, 20.4902, 22.3138

Same Dimension

The Same Dimension uses a secret algorithm to generate beautiful new colors.



38.7945, 36.2270, 35.9587



65.8771, 59.5645, 57.3759



41.5117, 41.9275, 36.0439



9.5499, 9.5443, 10.0190



14.1657, 7.2975, 0.9005



0.5619, 0.2887, 0.0723

Inverse Universe

The Inverse Universe completely reimagines the original color for something new.



38.7945, 36.2270, 35.9587



65.8771, 59.5645, 57.3759



37.7816, 41.0139, 55.2157



9.5499, 9.5443, 10.0190



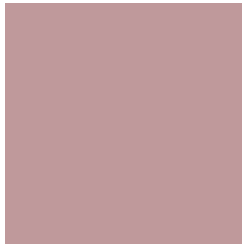
14.1657, 7.2975, 0.9005



0.5619, 0.2887, 0.0723

Previews

White Background



This preview shows how the XYZ color 38.7935, 36.2254, 35.9579 looks on a white background.

Color Contrast Check

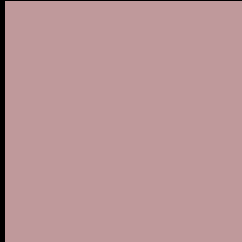
Large Text (above 18pt) WCAG AA × Fail

Any Text WCAG AA × Fail

Large Text (above 18pt) WCAG AAA × Fail

Any Text WCAG AAA × Fail

Black Background



This preview shows how the XYZ color 38.7935, 36.2254, 35.9579 looks on a black background.

Color Contrast Check

Large Text (above 18pt) WCAG AA ✓ Pass

Any Text WCAG AA ✓ Pass

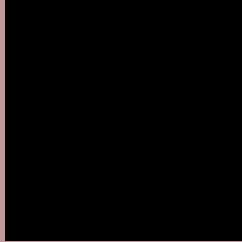
Large Text (above 18pt) WCAG AAA ✓ Pass

Any Text WCAG AAA ✓ Pass

If you want to check with other color combinations, try the [Color Contrast Checker](#).

XYZ 38.7935, 36.2254, 35.9579

Background



This preview shows how black text looks on a background with the XYZ color 38.7935, 36.2254, 35.9579.



This preview shows how white text looks on a background with the XYZ color 38.7935, 36.2254,

35.9579.

Color Blindness Simulation

Color vision deficiency is a very complex topic, and I could not describe the different causes any better than Wikipedia does, so if you want to learn more, you should check out their [article about color blindness](#).

Dichromacy



Original Color

38.7935, 36.2254, 35.9579

Protanopia

34.9914, 36.4857, 38.4559

Deuteranopia

36.9458, 36.2708, 35.6256



Tritanopia

39.5773, 36.3073, 39.5724

Trichromacy



Original Color

38.7935, 36.2254, 35.9579

Protanomaly

36.2489, 36.3789, 37.4591

Deuteranomaly

37.7288, 36.4243, 35.6139

Tritanomaly

39.3116, 36.2010, 38.1733

Monochromacy



Original Color

38.7935, 36.2254, 35.9579

Achromatopsia

35.7637, 37.6262, 40.9749

Achromatomaly

36.6335, 37.0616, 38.9410

CSS Examples

Text

The CSS property to change the color of the text to XYZ 38.7935, 36.2254, 35.9579 is called "color". The color property can be set on classes, ids or directly on the HTML element.

This example shows how text in the color `rgb(191, 153, 155)` looks like.

```
.text, #text, p{  
    color:rgb(191, 153, 155)  
}
```

If you want to add a text shadow in that color use the text-shadow property, you can generate a text shadow directly with our [CSS Text Shadow Generator](#).

Here you see how black text with a 4 pixel rgb(191, 153, 155) colored shadow looks like.

```
.shadow{ text-shadow: 4px 4px 2px rgb(191, 153, 155) }
```

Border

The CSS property to change the border of an element to XYZ 38.7935, 36.2254, 35.9579 is called "border". The border property can be set on classes, ids or directly on the HTML element.

This example shows the color as border, it can be applied via the CSS property "border" or "border-color".

```
.border, #border, table{ border:4px solid rgb(191, 153, 155) }
```


If only the border color should be changed use the property `border-color`.

```
.border{ border-color:rgb(191, 153, 155) }
```

If you want to add a box shadow in that color use:

Here you see how a box with a 4 pixel `rgb(191, 153, 155)` colored shadow looks like.

```
.boxshadow{ -moz-box-shadow:4px 4px 4px  
4px rgb(191, 153, 155); -webkit-box-  
shadow:4px 4px 4px 4px rgb(191, 153, 155);  
box-shadow:4px 4px 4px 4px rgb(191, 153,  
155) }
```

Background

The CSS property to change the background color of an element to XYZ 38.7935, 36.2254, 35.9579 is called "background". The background property can be set on classes, ids or directly on the HTML element.

```
.background, #background, body{  
background: rgb(191, 153, 155) }
```

If only the background color should be changed can be used:

```
.background{ background-color: rgb(191,  
153, 155) }
```

This example shows the color as background, it is applied via the CSS property "background".

To optimize and compress your CSS code, you can use our [online CSS compressor and optimizer](#) based on csstidy. If you want to create a linear or radial gradient as background or border, check our [CSS Gradient Generator](#).

Hey! You found this booklet interesting? Support Converting Colors with the new Membership Option!

The pro membership hides all ads, plus gives you double the colors in the color bucket, and more awesome pro features!

[Learn more, Memberships starting at \\$2.50/m!](#)

**Follow me
on Twitter!**

@ConvertingColor