

Converting Colors

XYZ(39.0171, 39.3157, 36.9985)

Have a look what the booklet for
XYZ(39.0171, 39.3157, 36.9985)
contains.

XYZ(38.9843, 39.3778, 36.9985)	3
<i>Conversions</i>	4
<i>Details</i>	6
<i>Harmonies</i>	12
<i>Previews</i>	24
<i>Color Blindness Simulation</i>	28
<i>CSS Examples</i>	31

Color

**XYZ(38.9843, 39.3778,
36.9985)**

Conversions

Conversions Part 1

Format	Color
Hex	B7A59C
RGB	183, 165, 156
RGB Percent	72%, 65%, 61%
CMY	0.2824, 0.3529, 0.3882
CMYK	0.00, 0.10, 0.15, 0.28
HSL	20°, 16%, 66%
HSV	20°, 15%, 72%
XYZ	38.9843, 39.3778, 36.9985
YIQ	169.3560, 13.6170, 1.0170

Conversions

Conversions Part 2

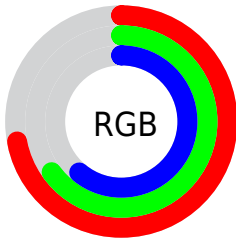
Format	Color
RYB	183, 170, 156
Decimal	12035484
CIELab	69.02, 5.01, 7.03
CIElCh	69, 8.634, 54.509
Yxy	39.3778, 0.3379, 0.3413
Android (android.graphics.Color)	4290225564 (0xFFB7A59C)
YUV	169.3560, -6.5845, 11.9658
Hunter-Lab	62.7517, 1.0770, 8.9688

Details

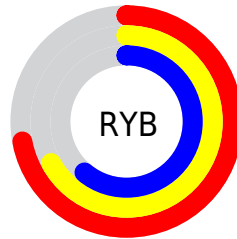
The XYZ color **38.9843, 39.3778, 36.9985** is a light color, and the websafe version is hex **999999**. A complement of this color would be **37.3934, 40.7581, 50.6964**, and the grayscale version is **37.9161, 39.8907, 43.4410**.

A 20% lighter version of the original color is **72.8227, 74.1903, 71.4548**, and **17.6609, 17.5760, 15.8263** is the 20% darker color. If you saturate the color by 10%, you get **35.4540, 34.6129, 28.7438**, and if you desaturate by 10%, it is **42.9601, 44.6593, 46.5545**.

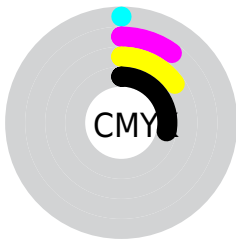
Distribution



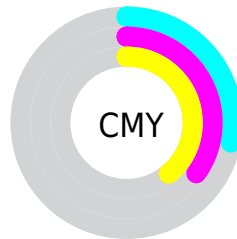
- Red (72%)
- Green (65%)
- Blue (61%)



- Red (72%)
- Yellow (67%)
- Blue (61%)



- Cyan (0%)
- Magenta (10%)
- Yellow (15%)
- Black (28%)



- Cyan (28%)
- Magenta (35%)
- Yellow (39%)

Brightness & Saturation Gradients

These gradients show how the XYZ color 38.9843, 39.3778, 36.9985 changes by changing the brightness by 10 percent. The first figure shows a shift by +10% for each color and the second figure -10%.

Similar to the brightness gradients but the following saturation gradients show a change of the XYZ color 38.9843, 39.3778, 36.9985 by changing the saturation by 10% instead.

■ 38.9843, 39.3778,
36.9985

■ 38.9843, 39.3778,
36.9985

333.0320,
343.4941, 348.4725

■ 26.9282, 27.0538,
24.9106

■ 72.9086, 74.2151,
71.7568

■ 17.6556, 17.6136,
15.7920

■ 95.5074, 97.4972,
95.2642

■ 10.8012, 10.6729,
9.2243

122.3512,
125.2007, 123.4152

■ 5.9996, 5.8474,
4.7890

153.8053,
157.7101, 156.6283

■ 2.8855, 2.7525,
2.0674

190.2351,
195.4097, 195.3220

■ 1.0935, 1.0039,
0.5963

232.0059,

■ 0.0197, 0.0000,

238.6840, 239.9149

0.0000

279.4831,
287.9173, 290.8256

■ 0.0000, 0.0000,
0.0000

■ 38.9843, 39.3778,
36.9985

■ 38.9843, 39.3778,
36.9985

■ 35.4540, 34.6129,
28.7438

■ 42.9601, 44.6593,
46.5545

■ 32.3498, 30.3435,
21.7312

■ 47.3936, 50.4674,
57.4625

■ 29.6554, 26.5547,
15.9005

■ 52.3004, 56.8181,
69.7738

■ 27.3522, 23.2288,
11.1854

■ 57.6945, 63.7255,
83.5358

■ 25.4202, 20.3470,
7.5131

■ 63.5892, 71.2029,
98.7941

■ 23.8371, 17.8889,
4.8021

■ 68.2088, 78.5478,
106.1740

■ 22.5779, 15.8325,
2.9584

■ 71.8852, 85.9006,
107.3995

■ 21.6135, 14.1531,
1.8684

■ 73.3386, 88.8074,
107.8839

■ 21.1985, 13.4073,
1.4706

Harmonies

Analogous

The Analogous color harmony consists of three colors that are next to each other on the color wheel.



39.8863, 39.3778, 39.8092



38.9843, 39.3778, 36.9985



37.6811, 39.3778, 35.7681

Triad

The Triadic color harmony groups three colors that are evenly spaced from another and form a triangle on the color wheel.



38.9843, 39.3778, 36.9985



34.8556, 39.3778, 42.1549



38.5355, 39.3778, 50.1450

Complementary

The Complementary color scheme is a pair of colors which are on the opposite of each other on the color wheel.



38.9843, 39.3778, 36.9985



37.3934, 40.7581, 50.6964

Split Complementary

Split-complementary colors differ from the complementary color scheme. The scheme consists of three colors, the original color and two neighbors of the complement color.



37.1749, 39.3778, 50.8676



38.9843, 39.3778, 36.9985



35.0717, 39.3778, 46.0959

Square

The Square scheme is like the rectangle color scheme, but the four colors are evenly spaced on the color wheel.



38.9843, 39.3778, 36.9985



35.3147, 39.3778, 38.6261



35.9125, 39.3778, 49.3446



39.6228, 39.3778, 47.4262

Rectangle

The Rectangle color scheme consists of four colors that form a rectangle on the color wheel.



38.9843, 39.3778, 36.9985



36.7686, 39.3778, 35.9517



35.9125, 39.3778, 49.3446



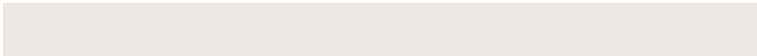
38.0941, 39.3778, 50.6361

Sweetspot

The Sweet Spot groups the original color and five complimentary colors.



38.9854, 39.3796, 36.9993



77.4597, 80.6683, 84.6424



39.0573, 36.9008, 45.1089



16.9829, 17.6516, 18.3891



88.6918, 93.3107, 101.6153



17.8044, 18.7317, 20.3988

Same Dimension

The Same Dimension uses a secret algorithm to generate beautiful new colors.



38.9854, 39.3796, 36.9993



67.4911, 67.3987, 60.7641



41.5497, 44.5081, 37.8541



9.2428, 9.4885, 9.4512



14.8455, 9.4674, 1.0449



0.5818, 0.4506, 0.0563

Inverse Universe

The Inverse Universe completely reimagines the original color for something new.



37.3934, 40.7581, 50.6964



64.0403, 70.3842, 90.4459



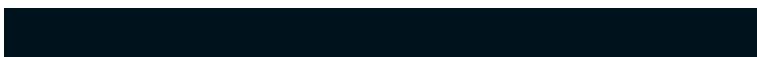
34.9157, 35.8027, 49.8705



9.0076, 9.6923, 11.4755



10.8810, 12.2216, 33.0386



0.4380, 0.5396, 1.1828

Previews

White Background



This preview shows how the XYZ color 38.9843, 39.3778, 36.9985 looks on a white background.

Color Contrast Check

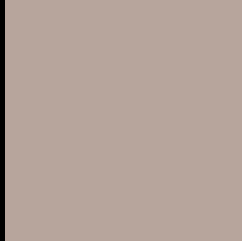
Large Text (above 18pt) WCAG AA × Fail

Any Text WCAG AA × Fail

Large Text (above 18pt) WCAG AAA × Fail

Any Text WCAG AAA × Fail

Black Background



This preview shows how the XYZ color 38.9843, 39.3778, 36.9985 looks on a black background.

Color Contrast Check

Large Text (above 18pt) WCAG AA ✓ Pass

Any Text WCAG AA ✓ Pass

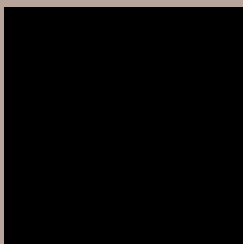
Large Text (above 18pt) WCAG AAA ✓ Pass

Any Text WCAG AAA ✓ Pass

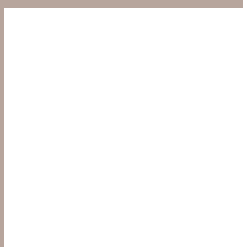
If you want to check with other color combinations, try the [Color Contrast Checker](#).

XYZ 38.9843, 39.3778, 36.9985

Background



This preview shows how black text looks on a background with the XYZ color 38.9843, 39.3778, 36.9985.



This preview shows how white text looks on a background with the XYZ color 38.9843, 39.3778,

36.9985.

Color Blindness Simulation

Color vision deficiency is a very complex topic, and I could not describe the different causes any better than Wikipedia does, so if you want to learn more, you should check out their [article about color blindness](#).

Dichromacy



Original Color

38.9843, 39.3778, 36.9985

Protanopia

37.6297, 39.4726, 37.9834

Deuteranopia

40.0842, 39.4135, 36.9474



Tritanopia

40.6658, 39.2501, 45.9901

Trichromacy



Original Color

38.9843, 39.3778, 36.9985

Protanomaly

38.0360, 39.4189, 37.5022

Deuteranomaly

39.7697, 39.5160, 36.9838

Tritanomaly

39.9322, 39.2119, 42.5098

Monochromacy



Original Color

38.9843, 39.3778, 36.9985

Achromatopsia

37.7116, 39.6755, 43.2066

Achromatomaly

38.1590, 39.6843, 40.7706

CSS Examples

Text

The CSS property to change the color of the text to XYZ 38.9843, 39.3778, 36.9985 is called "color". The color property can be set on classes, ids or directly on the HTML element.

This example shows how text in the color `rgb(183, 165, 156)` looks like.

```
.text, #text, p{  
    color:rgb(183, 165, 156)  
}
```

If you want to add a text shadow in that color use the text-shadow property, you can generate a text shadow directly with our [CSS Text Shadow Generator](#).

Here you see how black text with a 4 pixel rgb(183, 165, 156) colored shadow looks like.

```
.shadow{ text-shadow: 4px 4px 2px rgb(183, 165, 156) }
```

Border

The CSS property to change the border of an element to XYZ 38.9843, 39.3778, 36.9985 is called "border". The border property can be set on classes, ids or directly on the HTML element.

This example shows the color as border, it can be applied via the CSS property "border" or "border-color".

```
.border, #border, table{ border:4px solid rgb(183, 165, 156) }
```


If only the border color should be changed use the property `border-color`.

```
.border{ border-color:rgb(183, 165, 156) }
```

If you want to add a box shadow in that color use:

Here you see how a box with a 4 pixel `rgb(183, 165, 156)` colored shadow looks like.

```
.boxshadow{ -moz-box-shadow:4px 4px 4px  
4px rgb(183, 165, 156); -webkit-box-  
shadow:4px 4px 4px 4px rgb(183, 165, 156);  
box-shadow:4px 4px 4px 4px rgb(183, 165,  
156) }
```

Background

The CSS property to change the background color of an element to XYZ 38.9843, 39.3778, 36.9985 is called "background". The background property can be set on classes, ids or directly on the HTML element.

```
.background, #background, body{  
background: rgb(183, 165, 156) }
```

If only the background color should be changed can be used:

```
.background{ background-color: rgb(183,  
165, 156) }
```

This example shows the color as background, it is applied via the CSS property "background".

To optimize and compress your CSS code, you can use our [online CSS compressor and optimizer](#) based on csstidy. If you want to create a linear or radial gradient as background or border, check our [CSS Gradient Generator](#).

Hey! You found this booklet interesting? Support Converting Colors with the new Membership Option!

The pro membership hides all ads, plus gives you double the colors in the color bucket, and more awesome pro features!

[Learn more, Memberships starting at \\$2.50/m!](#)

**Follow me
on Twitter!**

@ConvertingColor