

Converting Colors

XYZ(39.0221, 35.9005, 31.7819)

Have a look what the booklet for
XYZ(39.0221, 35.9005, 31.7819)
contains.

XYZ(38.9424, 35.9133, 31.6675)	3
<i>Conversions</i>	4
<i>Details</i>	6
<i>Harmonies</i>	12
<i>Previews</i>	24
<i>Color Blindness Simulation</i>	28
<i>CSS Examples</i>	31

Color

**XYZ(38.9424, 35.9133,
31.6675)**

Conversions

Conversions Part 1

Format	Color
Hex	C49791
RGB	196, 151, 145
RGB Percent	77%, 59%, 57%
CMY	0.2314, 0.4078, 0.4314
CMYK	0.00, 0.23, 0.26, 0.23
HSL	7°, 30%, 67%
HSV	7°, 26%, 77%
XYZ	38.9424, 35.9133, 31.6675
YIQ	163.7710, 28.7460, 7.6740

Conversions

Conversions Part 2

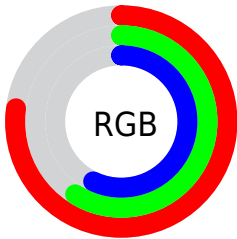
Format	Color
RYB	196, 152, 145
Decimal	12883857
CIELab	66.45, 15.96, 9.65
CIELCh	66, 18.651, 31.165
Yxy	35.9133, 0.3656, 0.3371
Android (android.graphics.Color)	4291073937 (0xFFC49791)
YUV	163.7710, -9.2541, 28.2648
Hunter-Lab	59.9277, 11.1199, 10.6189

Details

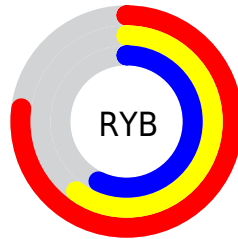
The XYZ color **38.9424, 35.9133, 31.6675** is a light color, and the websafe version is hex **CC9999**. A complement of this color would be **40.0538, 46.8308, 59.1530**, and the grayscale version is **35.2116, 37.0453, 40.3423**.

A 20% lighter version of the original color is **72.6481, 68.6688, 63.4583**, and **17.6072, 15.6033, 12.9102** is the 20% darker color. If you saturate the color by 10%, you get **34.9778, 30.1975, 23.5218**, and if you desaturate by 10%, it is **43.5780, 42.5532, 41.3240**.

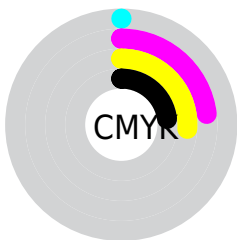
Distribution



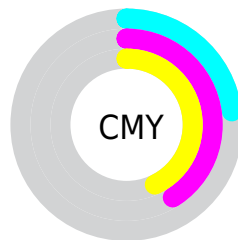
- Red (77%)
- Green (59%)
- Blue (57%)



- Red (77%)
- Yellow (60%)
- Blue (57%)



- Cyan (0%)
- Magenta (23%)
- Yellow (26%)
- Black (23%)





- Cyan (23%)
- Magenta (41%)
- Yellow (43%)

Brightness & Saturation Gradients


These gradients show how the XYZ color 38.9424, 35.9133, 31.6675 changes by changing the brightness by 10 percent. The first figure shows a shift by +10% for each color and the second figure -10%.


Similar to the brightness gradients but the following saturation gradients show a change of the XYZ color 38.9424, 35.9133, 31.6675 by changing the saturation by 10% instead.


 38.9424, 35.9133,
31.6675


 38.9424, 35.9133,
31.6675

332.8569,
328.5814, 324.0477

 26.8954, 24.3672,
20.8449


 72.8450, 68.8982,
63.3813

 17.6309, 15.6063,
12.8206


 95.4313, 91.1059,
85.1096

 10.7834, 9.2460,
7.1758


122.2614,
117.6362, 111.3103

 5.9876, 4.9020,
3.4922

153.7007,
148.8736, 142.4019

 2.8781, 2.1899,
1.3511

190.1146,
185.2024, 178.8029

 1.0896, 0.7145,
0.1031

231.8683,

 0.0164, 0.0000,

227.0070, 220.9318

0.0000

279.3273,
274.6719, 269.2072

■ 0.0000, 0.0000,
0.0000

■ 38.9424, 35.9133,
31.6675

■ 38.9424, 35.9133,
31.6675

■ 34.9778, 30.1975,
23.5218

■ 43.5780, 42.5532,
41.3240

■ 31.6501, 25.3600,
16.8083

■ 48.9106, 50.1503,
52.5601

■ 28.9268, 21.3587,
11.4446

■ 54.9686, 58.7425,
65.4431

■ 26.7710, 18.1459,
7.3391

■ 61.7778, 68.3638,
80.0355

■ 25.1422, 15.6692,
4.3887

■ 69.3628, 79.0468,
96.3968

■ 23.9941, 13.8698,
2.4739

■ 76.4988, 90.3233,
108.0100

■ 23.2710, 12.6792,
1.4448

■ 76.5751, 90.4758,
108.0354

■ 23.0729, 12.3515,
1.1680

Harmonies

Analogous

The Analogous color harmony consists of three colors that are next to each other on the color wheel.



39.7941, 35.9133, 38.7915



38.9424, 35.9133, 31.6675



36.7924, 35.9133, 27.1115

Triad

The Triadic color harmony groups three colors that are evenly spaced from another and form a triangle on the color wheel.



38.9424, 35.9133, 31.6675



29.6401, 35.9133, 32.1406



34.2439, 35.9133, 56.5971

Complementary

The Complementary color scheme is a pair of colors which are on the opposite of each other on the color wheel.



38.9424, 35.9133, 31.6675



40.0538, 46.8308, 59.1530

Split Complementary

Split-complementary colors differ from the complementary color scheme. The scheme consists of three colors, the original color and two neighbors of the complement color.



31.6078, 35.9133, 54.1943



38.9424, 35.9133, 31.6675



29.0387, 35.9133, 39.4171

Square

The Square scheme is like the rectangle color scheme, but the four colors are evenly spaced on the color wheel.



38.9424, 35.9133, 31.6675



31.4284, 35.9133, 27.3573



29.7396, 35.9133, 47.6209



36.9917, 35.9133, 53.8064

Rectangle

The Rectangle color scheme consists of four colors that form a rectangle on the color wheel.



38.9424, 35.9133, 31.6675



34.9666, 35.9133, 25.7821



29.7396, 35.9133, 47.6209



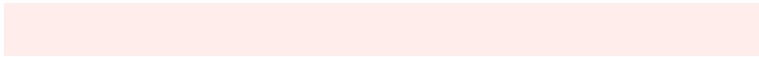
33.3158, 35.9133, 56.3678

Sweetspot

The Sweet Spot groups the original color and five complimentary colors.



38.9434, 35.9150, 31.6682



86.4623, 87.8043, 90.6855



42.1904, 35.7069, 53.4126



18.1816, 18.3313, 18.7244



0.0000, 0.0000, 0.0000



20.3446, 21.4041, 23.3091

Same Dimension

The Same Dimension uses a secret algorithm to generate beautiful new colors.



38.9434, 35.9150, 31.6682



66.4741, 59.1977, 48.9711



43.4898, 45.0079, 33.1837



10.1666, 10.2646, 10.5073



14.8589, 8.0035, 0.7617



0.6744, 0.4105, 0.0437

Inverse Universe

The Inverse Universe completely reimagines the original color for something new.



40.0538, 46.8308, 59.1530



68.8060, 82.1698, 106.8416



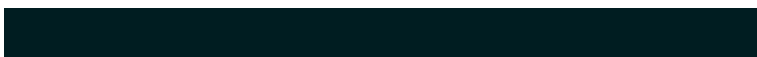
35.0153, 36.7539, 57.4735



10.2641, 11.2194, 12.9094



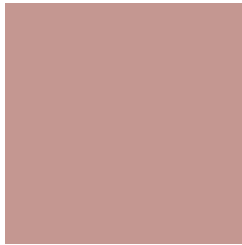
16.0362, 21.8289, 36.9248



0.7221, 1.0016, 1.6051

Previews

White Background



This preview shows how the XYZ color 38.9424, 35.9133, 31.6675 looks on a white background.

Color Contrast Check

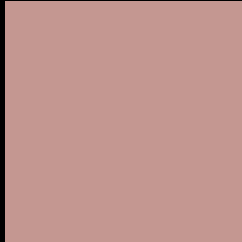
Large Text (above 18pt) WCAG AA × Fail

Any Text WCAG AA × Fail

Large Text (above 18pt) WCAG AAA × Fail

Any Text WCAG AAA × Fail

Black Background



This preview shows how the XYZ color 38.9424, 35.9133, 31.6675 looks on a black background.

Color Contrast Check

Large Text (above 18pt) WCAG AA ✓ Pass

Any Text WCAG AA ✓ Pass

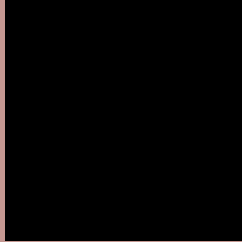
Large Text (above 18pt) WCAG AAA ✓ Pass

Any Text WCAG AAA ✓ Pass

If you want to check with other color combinations, try the [Color Contrast Checker](#).

XYZ 38.9424, 35.9133, 31.6675

Background



This preview shows how black text looks on a background with the XYZ color 38.9424, 35.9133, 31.6675.



This preview shows how white text looks on a background with the XYZ color 38.9424, 35.9133,

31.6675.

Color Blindness Simulation

Color vision deficiency is a very complex topic, and I could not describe the different causes any better than Wikipedia does, so if you want to learn more, you should check out their [article about color blindness](#).

Dichromacy



Original Color

38.9424, 35.9133, 31.6675

Protanopia

34.1862, 35.9072, 33.9831

Deuteranopia

36.6897, 35.9809, 31.3968



Tritanopia

40.3813, 36.0387, 38.0855

Trichromacy



Original Color

38.9424, 35.9133, 31.6675

Protanomaly

35.7624, 35.7170, 33.0262

Deuteranomaly

37.3287, 35.8162, 31.3313

Tritanomaly

39.8487, 36.0496, 35.8684

Monochromacy



Original Color

38.9424, 35.9133, 31.6675

Achromatopsia

35.2861, 37.1238, 40.4278

Achromatomaly

36.3884, 36.4607, 37.0180

CSS Examples

Text

The CSS property to change the color of the text to XYZ 38.9424, 35.9133, 31.6675 is called "color". The color property can be set on classes, ids or directly on the HTML element.

This example shows how text in the color `rgb(196, 151, 145)` looks like.

```
.text, #text, p{  
    color:rgb(196, 151, 145)  
}
```

If you want to add a text shadow in that color use the text-shadow property, you can generate a text shadow directly with our [CSS Text Shadow Generator](#).

Here you see how black text with a 4 pixel rgb(196, 151, 145) colored shadow looks like.

```
.shadow{ text-shadow: 4px 4px 2px rgb(196, 151, 145) }
```

Border

The CSS property to change the border of an element to XYZ 38.9424, 35.9133, 31.6675 is called "border". The border property can be set on classes, ids or directly on the HTML element.

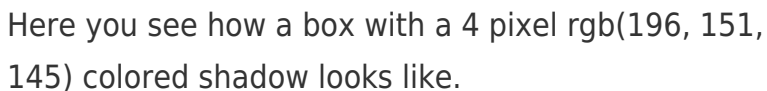
This example shows the color as border, it can be applied via the CSS property "border" or "border-color".

```
.border, #border, table{ border:4px solid rgb(196, 151, 145) }
```


If only the border color should be changed use the property border-color.

```
.border{ border-color:rgb(196, 151, 145) }
```

If you want to add a box shadow in that color use:



Here you see how a box with a 4 pixel rgb(196, 151, 145) colored shadow looks like.

```
.boxshadow{ -moz-box-shadow:4px 4px 4px 4px rgb(196, 151, 145); -webkit-box-shadow:4px 4px 4px 4px rgb(196, 151, 145); box-shadow:4px 4px 4px 4px rgb(196, 151, 145) }
```

Background

The CSS property to change the background color of an element to XYZ 38.9424, 35.9133, 31.6675 is called "background". The background property can be set on classes, ids or directly on the HTML element.

```
.background, #background, body{  
background: rgb(196, 151, 145) }
```

If only the background color should be changed can be used:

```
.background{ background-color: rgb(196,  
151, 145) }
```

This example shows the color as background, it is applied via the CSS property "background".

To optimize and compress your CSS code, you can use our [online CSS compressor and optimizer](#) based on csstidy. If you want to create a linear or radial gradient as background or border, check our [CSS Gradient Generator](#).

Hey! You found this booklet interesting? Support Converting Colors with the new Membership Option!

The pro membership hides all ads, plus gives you double the colors in the color bucket, and more awesome pro features!

[Learn more, Memberships starting at \\$2.50/m!](#)

**Follow me
on Twitter!**

@ConvertingColor