

Converting Colors

XYZ(39.1233, 38.4638, 40.0237)

Have a look what the booklet for
XYZ(39.1233, 38.4638, 40.0237)
contains.

XYZ(39.2984, 38.6754, 40.0442)	3
<i>Conversions</i>	4
<i>Details</i>	6
<i>Harmonies</i>	12
<i>Previews</i>	24
<i>Color Blindness Simulation</i>	28
<i>CSS Examples</i>	31

Color

**XYZ(39.2984, 38.6754,
40.0442)**

Conversions

Conversions Part 1

Format	Color
Hex	B8A2A3
RGB	184, 162, 163
RGB Percent	72%, 64%, 64%
CMY	0.2784, 0.3647, 0.3608
CMYK	0.00, 0.12, 0.11, 0.28
HSL	357°, 13%, 68%
HSV	357°, 12%, 72%
XYZ	39.2984, 38.6754, 40.0442
YIQ	168.6920, 12.7910, 4.9750

Conversions

Conversions Part 2

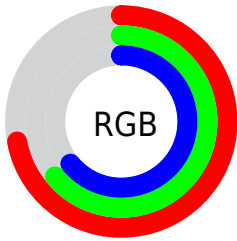
Format	Color
RYB	184, 162, 163
Decimal	12100259
CIELab	68.52, 8.20, 2.42
CIELCh	69, 8.551, 16.468
Yxy	38.6754, 0.3330, 0.3277
Android (android.graphics.Color)	4290290339 (0xFFB8A2A3)
YUV	168.6920, -2.8062, 13.4251
Hunter-Lab	62.1895, 3.9648, 5.3555

Details

The XYZ color **39.2984, 38.6754, 40.0442** is a light color, and the websafe version is hex **999999**. A complement of this color would be **40.5896, 45.3823, 51.4224**, and the grayscale version is **37.5699, 39.5264, 43.0443**.

A 20% lighter version of the original color is **73.4029, 73.2129, 76.5924**, and **17.8052, 17.1249, 17.4059** is the 20% darker color. If you saturate the color by 10%, you get **34.8253, 32.0751, 31.3198**, and if you desaturate by 10%, it is **44.4666, 46.3151, 50.0799**.

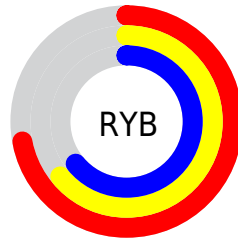
Distribution



Red (72%)

Green (64%)

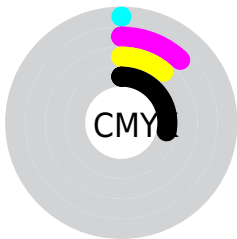
Blue (64%)



Red (72%)

Yellow (64%)

Blue (64%)

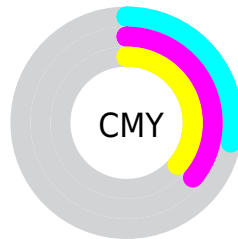


Cyan (0%)

Magenta (12%)

Yellow (11%)

Black (28%)



Cyan (28%)

Magenta (36%)

Yellow (36%)

Brightness & Saturation Gradients

These gradients show how the XYZ color 39.2984, 38.6754, 40.0442 changes by changing the brightness by 10 percent. The first figure shows a shift by +10% for each color and the second figure -10%.

Similar to the brightness gradients but the following saturation gradients show a change of the XYZ color 39.2984, 38.6754, 40.0442 by changing the saturation by 10% instead.

■ 39.2984, 38.6754,
40.0442

■ 39.2984, 38.6754,
40.0442

334.3429,
340.5085, 361.8675

■ 27.1737, 26.5073,
27.2590

■ 73.3851, 73.1422,
76.4686

■ 17.8410, 17.2035,
17.5336

■ 96.0778, 96.2096,
100.9449

■ 10.9349, 10.3797,
10.4497

123.0240,
123.6790, 130.1553

■ 6.0900, 5.6514,
5.5887

154.5888,
155.9347, 164.5183

■ 2.9411, 2.6343,
2.5319

191.1378,
193.3611, 204.4525

■ 1.1227, 0.9439,
0.8570

233.0362,

■ 0.0440, 0.0000,

236.3426, 250.3764

0.0000

280.6494,
285.2636, 302.7085

■ 0.0000, 0.0000,
0.0000

■ 39.2984, 38.6754,
40.0442

■ 39.2984, 38.6754,
40.0442

■ 34.8253, 32.0751,
31.3198

■ 44.4666, 46.3151,
50.0799

■ 31.0145, 26.4645,
23.8502

■ 50.3544, 55.0309,
61.4752

■ 27.8356, 21.7975,
17.5784

■ 56.9890, 64.8642,
74.2793

■ 25.2545, 18.0221,
12.4422

■ 64.3953, 75.8526,
88.5378

■ 23.2336, 15.0816,
8.3735

■ 72.5971, 88.0318,
104.2945

■ 21.7314, 12.9127,
5.2972

■ 73.5774, 88.9305,
107.8951

■ 20.7005, 11.4430,
3.1284

■ 20.0848, 10.5863,
1.7678

■ 19.8131, 10.2087,
1.1656

Harmonies

Analogous

The Analogous color harmony consists of three colors that are next to each other on the color wheel.



39.3343, 38.6754, 43.8695



39.2984, 38.6754, 40.0442



38.5716, 38.6754, 36.9618

Triad

The Triadic color harmony groups three colors that are evenly spaced from another and form a triangle on the color wheel.



39.2984, 38.6754, 40.0442



34.9149, 38.6754, 37.2086



36.1575, 38.6754, 49.7374

Complementary

The Complementary color scheme is a pair of colors which are on the opposite of each other on the color wheel.



39.2984, 38.6754, 40.0442



40.5896, 45.3823, 51.4224

Split Complementary

Split-complementary colors differ from the complementary color scheme. The scheme consists of three colors, the original color and two neighbors of the complement color.



35.0056, 38.6754, 47.7173



39.2984, 38.6754, 40.0442



34.3002, 38.6754, 40.4000

Square

The Square scheme is like the rectangle color scheme, but the four colors are evenly spaced on the color wheel.



39.2984, 38.6754, 40.0442



36.0309, 38.6754, 35.3944



34.3330, 38.6754, 44.2476



37.4985, 38.6754, 49.6276

Rectangle

The Rectangle color scheme consists of four colors that form a rectangle on the color wheel.



39.2984, 38.6754, 40.0442



37.8030, 38.6754, 35.6733



34.3330, 38.6754, 44.2476



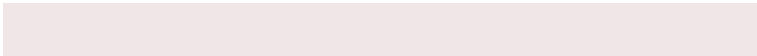
35.7360, 38.6754, 49.2799

Sweetspot

The Sweet Spot groups the original color and five complimentary colors.



39.2995, 38.6771, 40.0450



78.5212, 80.8727, 86.7373



41.0779, 39.3582, 50.7797



16.7708, 17.2027, 18.3947



88.6918, 93.3107, 101.6153



17.8044, 18.7317, 20.3988

Same Dimension

The Same Dimension uses a secret algorithm to generate beautiful new colors.



39.2995, 38.6771, 40.0450



69.2826, 67.2213, 68.7804



41.0234, 42.2674, 40.1808



9.0207, 9.0186, 9.4562



13.6620, 7.0386, 0.8409



0.4872, 0.2504, 0.0591

Inverse Universe

The Inverse Universe completely reimagines the original color for something new.



39.2995, 38.6771, 40.0450



69.2826, 67.2213, 68.7804



38.7089, 41.4543, 51.3092



9.0207, 9.0186, 9.4562



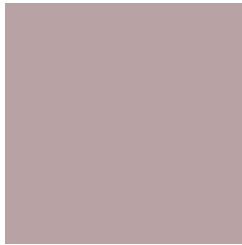
13.6620, 7.0386, 0.8409



0.4872, 0.2504, 0.0591

Previews

White Background



This preview shows how the XYZ color 39.2984, 38.6754, 40.0442 looks on a white background.

Color Contrast Check

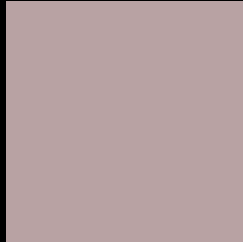
Large Text (above 18pt) WCAG AA × Fail

Any Text WCAG AA × Fail

Large Text (above 18pt) WCAG AAA × Fail

Any Text WCAG AAA × Fail

Black Background



This preview shows how the XYZ color 39.2984, 38.6754, 40.0442 looks on a black background.

Color Contrast Check

Large Text (above 18pt) WCAG AA ✓ Pass

Any Text WCAG AA ✓ Pass

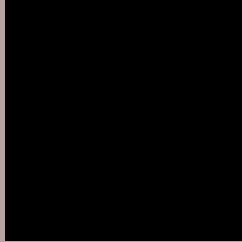
Large Text (above 18pt) WCAG AAA ✓ Pass

Any Text WCAG AAA ✓ Pass

If you want to check with other color combinations, try the [Color Contrast Checker](#).

XYZ 39.2984, 38.6754, 40.0442

Background



This preview shows how black text looks on a background with the XYZ color 39.2984, 38.6754, 40.0442.



This preview shows how white text looks on a background with the XYZ color 39.2984, 38.6754,

Color Blindness Simulation

Color vision deficiency is a very complex topic, and I could not describe the different causes any better than Wikipedia does, so if you want to learn more, you should check out their [article about color blindness](#).

Dichromacy



Original Color

39.2984, 38.6754, 40.0442

Protanopia

37.0053, 38.5351, 41.0849

Deuteranopia

39.5388, 38.7993, 40.0554



Tritanopia

40.1212, 38.4730, 44.8466

Trichromacy



Original Color

39.2984, 38.6754, 40.0442

Protanomaly

37.8352, 38.7046, 40.5986

Deuteranomaly

39.5388, 38.7993, 40.0554

Tritanomaly

39.9139, 38.6686, 42.8962

Monochromacy



Original Color

39.2984, 38.6754, 40.0442

Achromatopsia

37.7116, 39.6755, 43.2066

Achromatomaly

38.0668, 39.0611, 42.0924

CSS Examples

Text

The CSS property to change the color of the text to XYZ 39.2984, 38.6754, 40.0442 is called "color". The color property can be set on classes, ids or directly on the HTML element.

This example shows how text in the color `rgb(184, 162, 163)` looks like.

```
.text, #text, p{  
    color:rgb(184, 162, 163)  
}
```

If you want to add a text shadow in that color use the text-shadow property, you can generate a text shadow directly with our [CSS Text Shadow Generator](#).

Here you see how black text with a 4 pixel rgb(184, 162, 163) colored shadow looks like.

```
.shadow{ text-shadow: 4px 4px 2px rgb(184, 162, 163) }
```

Border

The CSS property to change the border of an element to XYZ 39.2984, 38.6754, 40.0442 is called "border". The border property can be set on classes, ids or directly on the HTML element.

This example shows the color as border, it can be applied via the CSS property "border" or "border-color".

```
.border, #border, table{ border:4px solid rgb(184, 162, 163) }
```


If only the border color should be changed use the property `border-color`.

```
.border{ border-color:rgb(184, 162, 163) }
```

If you want to add a box shadow in that color use:

Here you see how a box with a 4 pixel `rgb(184, 162, 163)` colored shadow looks like.

```
.boxshadow{ -moz-box-shadow:4px 4px 4px  
4px rgb(184, 162, 163); -webkit-box-  
shadow:4px 4px 4px 4px rgb(184, 162, 163);  
box-shadow:4px 4px 4px 4px rgb(184, 162,  
163) }
```

Background

The CSS property to change the background color of an element to XYZ 39.2984, 38.6754, 40.0442 is called "background". The background property can be set on classes, ids or directly on the HTML element.

```
.background, #background, body{  
background: rgb(184, 162, 163) }
```

If only the background color should be changed can be used:

```
.background{ background-color: rgb(184,  
162, 163) }
```

This example shows the color as background, it is applied via the CSS property "background".

To optimize and compress your CSS code, you can use our [online CSS compressor and optimizer](#) based on csstidy. If you want to create a linear or radial gradient as background or border, check our [CSS Gradient Generator](#).

Hey! You found this booklet interesting? Support Converting Colors with the new Membership Option!

The pro membership hides all ads, plus gives you double the colors in the color bucket, and more awesome pro features!

[Learn more, Memberships starting at \\$2.50/m!](#)

**Follow me
on Twitter!**

@ConvertingColor