

Converting Colors

XYZ(39.1241, 38.0272, 30.0889)

Have a look what the booklet for
XYZ(39.1241, 38.0272, 30.0889)
contains.

XYZ(39.1241, 38.0272, 30.0889)	3
<i>Conversions</i>	4
<i>Details</i>	6
<i>Harmonies</i>	12
<i>Previews</i>	24
<i>Color Blindness Simulation</i>	28
<i>CSS Examples</i>	31

Color

**XYZ(39.1241, 38.0272,
30.0889)**

Conversions

Conversions Part 1

Format	Color
Hex	C19F8C
RGB	193, 159, 140
RGB Percent	76%, 62%, 55%
CMY	0.2431, 0.3765, 0.4510
CMYK	0.00, 0.18, 0.27, 0.24
HSL	22°, 30%, 65%
HSV	22°, 27%, 76%
XYZ	39.1241, 38.0272, 30.0889
YIQ	167.0000, 26.3630, 1.2990

Conversions

Conversions Part 2

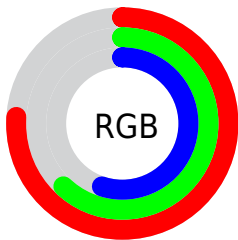
Format	Color
R_{YB}	193, 170, 140
Decimal	12689292
CIE _{Lab}	68.04, 9.70, 14.63
CIE _{LCh}	68, 17.549, 56.464
Yxy	38.0272, 0.3648, 0.3546
Android (android.graphics.Color)	4290879372 (0xFFC19F8C)
YUV	167.0000, -13.3110, 22.8020
Hunter-Lab	61.6662, 5.3334, 14.2369

Details

The XYZ color **39.1241, 38.0272, 30.0889** is a light color, and the websafe version is hex **CC9999**. A complement of this color would be **35.5765, 39.6967, 56.2394**, and the grayscale version is **36.7852, 38.7009, 42.1453**.

A 20% lighter version of the original color is **73.2085, 72.3122, 61.1381**, and **17.8555, 16.9523, 12.0039** is the 20% darker color. If you saturate the color by 10%, you get **35.8008, 33.4617, 22.5651**, and if you desaturate by 10%, it is **42.9123, 43.1225, 38.9999**.

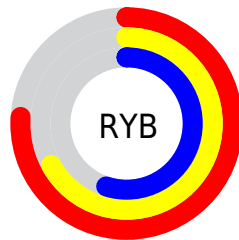
Distribution



Red (76%)

Green (62%)

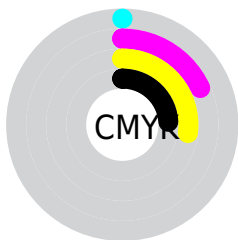
Blue (55%)



Red (76%)

Yellow (67%)

Blue (55%)

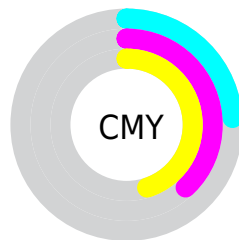


Cyan (0%)

Magenta (18%)

Yellow (27%)

Black (24%)



Cyan (24%)

Magenta (38%)

Yellow (45%)

Brightness & Saturation Gradients

These gradients show how the XYZ color 39.1241, 38.0272, 30.0889 changes by changing the brightness by 10 percent. The first figure shows a shift by +10% for each color and the second figure -10%.

Similar to the brightness gradients but the following saturation gradients show a change of the XYZ color 39.1241, 38.0272, 30.0889 by changing the saturation by 10% instead.

■ 39.1241, 38.0272,
30.0889

■ 39.1241, 38.0272,
30.0889

333.6159,
337.7366, 316.5388

■ 27.0374, 26.0038,
19.6535

■ 73.1207, 72.1498,
60.8654

■ 17.7381, 16.8265,
11.9618

■ 95.7614, 95.0178,
82.0435

■ 10.8607, 10.1109,
6.5955

■ 122.6508,
122.2695, 107.6397

■ 6.0398, 5.4725,
3.1358

154.1542,
154.2893, 138.0723

■ 2.9102, 2.5271,
1.1644

190.6371,
191.4614, 173.7600

■ 1.1064, 0.8902,
0.0000

232.4648,

■ 0.0305, 0.0000,

234.1705, 215.1213

0.0000

280.0026,
282.8007, 262.5747

■ 0.0000, 0.0000,
0.0000

■ 39.1241, 38.0272,
30.0889

■ 39.1241, 38.0272,
30.0889

■ 35.8008, 33.4617,
22.5651

■ 42.9123, 43.1225,
38.9999

■ 32.9201, 29.4031,
16.3556

■ 47.1804, 48.7592,
49.3616

■ 30.4623, 25.8344,
11.3839

■ 51.9465, 54.9551,
61.2360

■ 28.4047, 22.7354,
7.5648

■ 57.2268, 61.7253,
74.6811

■ 26.7222, 20.0847,
4.8023

■ 63.0367, 69.0848,
89.7518

■ 25.3864, 17.8583,
2.9842

■ 69.2616, 76.9958,
105.8189

■ 24.3591, 16.0279,
1.9506

■ 72.8957, 84.2642,
107.0303

■ 24.1330, 15.6188,
1.7428

■ 75.8024, 90.0775,
107.9992

Harmonies

Analogous

The Analogous color harmony consists of three colors that are next to each other on the color wheel.



41.0530, 38.0272, 35.0565



39.1241, 38.0272, 30.0889



36.4687, 38.0272, 28.1319

Triad

The Triadic color harmony groups three colors that are evenly spaced from another and form a triangle on the color wheel.



39.1241, 38.0272, 30.0889



31.1503, 38.0272, 40.4841



38.5354, 38.0272, 56.3855

Complementary

The Complementary color scheme is a pair of colors which are on the opposite of each other on the color wheel.



39.1241, 38.0272, 30.0889



35.5765, 39.6967, 56.2394

Split Complementary

Split-complementary colors differ from the complementary color scheme. The scheme consists of three colors, the original color and two neighbors of the complement color.



35.8207, 38.0272, 58.3085



39.1241, 38.0272, 30.0889



31.6423, 38.0272, 48.4774

Square

The Square scheme is like the rectangle color scheme, but the four colors are evenly spaced on the color wheel.



39.1241, 38.0272, 30.0889



31.9397, 38.0272, 33.6377



33.3187, 38.0272, 55.2531



40.7013, 38.0272, 50.2848

Rectangle

The Rectangle color scheme consists of four colors that form a rectangle on the color wheel.



39.1241, 38.0272, 30.0889



34.6754, 38.0272, 28.5889



33.3187, 38.0272, 55.2531



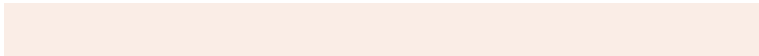
37.6529, 38.0272, 57.5726

Sweetspot

The Sweet Spot groups the original color and five complimentary colors.



39.1251, 38.0290, 30.0897



83.9648, 86.6262, 87.0903



39.0547, 33.1677, 44.6187



17.7539, 18.2437, 18.0481



92.9021, 97.7402, 106.4391



19.4759, 20.4902, 22.3138

Same Dimension

The Same Dimension uses a secret algorithm to generate beautiful new colors.



39.1251, 38.0290, 30.0897



66.3706, 63.0453, 45.4403



44.0856, 47.9500, 31.7432



10.3622, 10.6558, 10.5725



16.1206, 10.5270, 1.1823



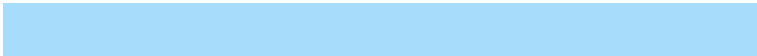
0.7621, 0.5860, 0.0729

Inverse Universe

The Inverse Universe completely reimagines the original color for something new.



35.5765, 39.6967, 56.2394



58.9476, 66.5185, 100.0928



31.0234, 30.5903, 54.7217



10.0549, 10.8012, 12.8397



11.2571, 12.2706, 35.3318



0.5497, 0.6567, 1.5477

Previews

White Background



This preview shows how the XYZ color 39.1241, 38.0272, 30.0889 looks on a white background.

Color Contrast Check

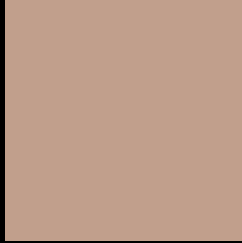
Large Text (above 18pt) WCAG AA × Fail

Any Text WCAG AA × Fail

Large Text (above 18pt) WCAG AAA × Fail

Any Text WCAG AAA × Fail

Black Background



This preview shows how the XYZ color 39.1241, 38.0272, 30.0889 looks on a black background.

Color Contrast Check

Large Text (above 18pt) WCAG AA ✓ Pass

Any Text WCAG AA ✓ Pass

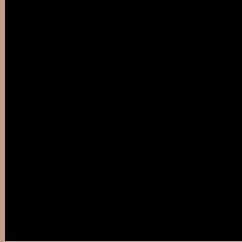
Large Text (above 18pt) WCAG AAA ✓ Pass

Any Text WCAG AAA ✓ Pass

If you want to check with other color combinations, try the [Color Contrast Checker](#).

XYZ 39.1241, 38.0272, 30.0889

Background



This preview shows how black text looks on a background with the XYZ color 39.1241, 38.0272, 30.0889.



This preview shows how white text looks on a background with the XYZ color 39.1241, 38.0272,

Color Blindness Simulation

Color vision deficiency is a very complex topic, and I could not describe the different causes any better than Wikipedia does, so if you want to learn more, you should check out their [article about color blindness](#).

Dichromacy



Original Color

39.1241, 38.0272, 30.0889

Protanopia

36.0497, 38.2543, 31.4704

Deuteranopia

38.7903, 38.1114, 30.1227



Tritanopia

41.4613, 37.9685, 41.7026

Trichromacy



Original Color

39.1241, 38.0272, 30.0889

Protanomaly

37.0357, 37.9711, 30.9684

Deuteranomaly

39.0427, 38.2415, 30.1345

Tritanomaly

40.4799, 37.8134, 37.0635

Monochromacy



Original Color

39.1241, 38.0272, 30.0889

Achromatopsia

36.7301, 38.6429, 42.0822

Achromatomaly

37.2658, 38.2153, 37.3105

CSS Examples

Text

The CSS property to change the color of the text to XYZ 39.1241, 38.0272, 30.0889 is called "color". The color property can be set on classes, ids or directly on the HTML element.

This example shows how text in the color `rgb(193, 159, 140)` looks like.

```
.text, #text, p{  
    color:rgb(193, 159, 140)  
}
```

If you want to add a text shadow in that color use the text-shadow property, you can generate a text shadow directly with our [CSS Text Shadow Generator](#).

Here you see how black text with a 4 pixel rgb(193, 159, 140) colored shadow looks like.

```
.shadow{ text-shadow: 4px 4px 2px rgb(193, 159, 140) }
```

Border

The CSS property to change the border of an element to XYZ 39.1241, 38.0272, 30.0889 is called "border". The border property can be set on classes, ids or directly on the HTML element.

This example shows the color as border, it can be applied via the CSS property "border" or "border-color".

```
.border, #border, table{ border:4px solid rgb(193, 159, 140) }
```


If only the border color should be changed use the property `border-color`.

```
.border{ border-color:rgb(193, 159, 140) }
```

If you want to add a box shadow in that color use:

Here you see how a box with a 4 pixel `rgb(193, 159, 140)` colored shadow looks like.

```
.boxshadow{ -moz-box-shadow:4px 4px 4px  
4px rgb(193, 159, 140); -webkit-box-  
shadow:4px 4px 4px 4px rgb(193, 159, 140);  
box-shadow:4px 4px 4px 4px rgb(193, 159,  
140) }
```

Background

The CSS property to change the background color of an element to XYZ 39.1241, 38.0272, 30.0889 is called "background". The background property can be set on classes, ids or directly on the HTML element.

```
.background, #background, body{  
background: rgb(193, 159, 140) }
```

If only the background color should be changed can be used:

```
.background{ background-color: rgb(193,  
159, 140) }
```

This example shows the color as background, it is applied via the CSS property "background".

To optimize and compress your CSS code, you can use our [online CSS compressor and optimizer](#) based on csstidy. If you want to create a linear or radial gradient as background or border, check our [CSS Gradient Generator](#).

Hey! You found this booklet interesting? Support Converting Colors with the new Membership Option!

The pro membership hides all ads, plus gives you double the colors in the color bucket, and more awesome pro features!

[Learn more, Memberships starting at \\$2.50/m!](#)

**Follow me
on Twitter!**

@ConvertingColor