

Converting Colors

XYZ(39.1557, 39.0039, 45.8348)

Have a look what the booklet for
XYZ(39.1557, 39.0039, 45.8348)
contains.

| | |
|--|----|
| XYZ(39.1448, 38.9932, 46.0207) | 3 |
| <i>Conversions</i> | 4 |
| <i>Details</i> | 6 |
| <i>Harmonies</i> | 12 |
| <i>Previews</i> | 24 |
| <i>Color Blindness Simulation</i> | 28 |
| <i>CSS Examples</i> | 31 |

Color

**XYZ(39.1448, 38.9932,
46.0207)**

Conversions

Conversions Part 1

| Format | Color |
|-------------|---------------------------|
| Hex | B1A4AF |
| RGB | 177, 164, 175 |
| RGB Percent | 69%, 64%, 69% |
| CMY | 0.3059, 0.3568, 0.3137 |
| CMYK | 0.00, 0.07, 0.01, 0.31 |
| HSL | 309°, 8%, 67% |
| HSV | 309°, 7%, 69% |
| XYZ | 39.1448, 38.9932, 46.0207 |
| YIQ | 169.1410, 4.2170, 6.1770 |

Conversions

Conversions Part 2

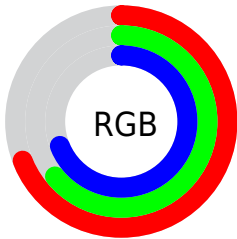
| Format | Color |
|-------------------------------------|-----------------------------|
| RYB | 177, 164, 175 |
| Decimal | 11642031 |
| CIELab | 68.75, 6.72, -3.98 |
| CIElCh | 69, 7.809, 329.367 |
| Yxy | 38.9932, 0.3153, 0.3141 |
| Android (android.graphics.Color) | 4289832111 (0xFFB1A4AF) |
| YUV | 169.1410, 2.8885, 6.8923 |
| Hunter-Lab | 62.4445, 2.6189, 0.0153 |

Details

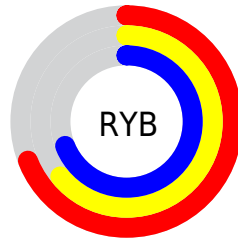
The XYZ color **39.1448, 38.9932, 46.0207** is a light color, and the websafe version is hex **999999**. A complement of this color would be **37.9164, 42.0911, 42.2045**, and the grayscale version is **37.7675, 39.7343, 43.2707**.

A 20% lighter version of the original color is **73.2187, 73.6998, 85.2294**, and **17.6815, 17.3035, 21.1469** is the 20% darker color. If you saturate the color by 10%, you get **35.9306, 32.9881, 43.6430**, and if you desaturate by 10%, it is **42.8075, 45.8855, 48.5754**.

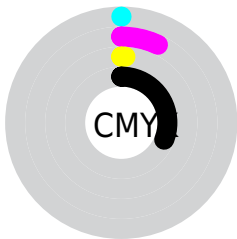
Distribution



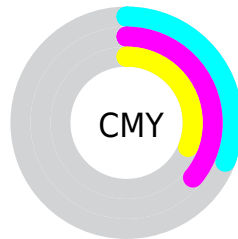
- Red (69%)
- Green (64%)
- Blue (69%)



- Red (69%)
- Yellow (64%)
- Blue (69%)



- Cyan (0%)
- Magenta (7%)
- Yellow (1%)
- Black (31%)



- Cyan (31%)
- Magenta (36%)
- Yellow (31%)

Brightness & Saturation Gradients

These gradients show how the XYZ color 39.1448, 38.9932, 46.0207 changes by changing the brightness by 10 percent. The first figure shows a shift by +10% for each color and the second figure -10%.

Similar to the brightness gradients but the following saturation gradients show a change of the XYZ color 39.1448, 38.9932, 46.0207 by changing the saturation by 10% instead.

■ 39.1448, 38.9932,
46.0207

■ 39.1448, 38.9932,
46.0207

333.7023,
341.8616, 387.1719

■ 27.0536, 26.7544,
31.9134

■ 73.1521, 73.6279,
85.5846

■ 17.7503, 17.3889,
21.0311

■ 95.7990, 96.7927,
111.8782

■ 10.8695, 10.5121,
12.9553

122.6951,
124.3682, 143.0711

■ 6.0458, 5.7398,
7.2674

154.2059,
156.7390, 179.5816

■ 2.9139, 2.6875,
3.5489

190.6966,
194.2893, 221.8284

■ 1.1084, 0.9709,
1.3813

232.5327,

■ 0.0321, 0.0000,

237.4035, 270.2300

0.1271

280.0795,
286.4662, 325.2050

■ 0.0000, 0.0000,
0.0000

■ 39.1448, 38.9932,
46.0207

■ 39.1448, 38.9932,
46.0207

■ 35.9306, 32.9881,
43.6430

■ 42.8075, 45.8855,
48.5754

■ 33.1434, 27.8290,
41.4337

■ 46.9324, 53.6941,
51.3105

■ 30.7650, 23.4789,
39.3870

■ 51.5368, 62.4530,
54.2324

■ 28.7744, 19.8959,
37.4956

■ 56.6361, 72.1929,
57.3464

■ 27.1488, 17.0347,
35.7520

■ 62.2451, 82.9432,
60.6574

■ 25.8632, 14.8449,
34.1476

■ 63.3337, 84.6440,
62.4891

■ 24.8892, 13.2699,
32.6726

■ 63.6370, 84.7654,
64.0865

■ 24.1935, 12.2435,
31.3161

■ 63.9460, 84.8889,
65.7135

■ 23.7270, 11.6670,
30.0612

■ 64.2606, 85.0148,
67.3702

Harmonies

Analogous

The Analogous color harmony consists of three colors that are next to each other on the color wheel.



38.2397, 38.9932, 48.6698



39.1448, 38.9932, 46.0207



39.4897, 38.9932, 42.5323

Triad

The Triadic color harmony groups three colors that are evenly spaced from another and form a triangle on the color wheel.



39.1448, 38.9932, 46.0207



37.0882, 38.9932, 36.0077



35.0289, 38.9932, 45.8833

Complementary

The Complementary color scheme is a pair of colors which are on the opposite of each other on the color wheel.



39.1448, 38.9932, 46.0207



37.9164, 42.0911, 42.2045

Split Complementary

Split-complementary colors differ from the complementary color scheme. The scheme consists of three colors, the original color and two neighbors of the complement color.



34.7357, 38.9932, 42.3818



39.1448, 38.9932, 46.0207



35.9085, 38.9932, 36.7967

Square

The Square scheme is like the rectangle color scheme, but the four colors are evenly spaced on the color wheel.



39.1448, 38.9932, 46.0207



38.2862, 38.9932, 36.8652



35.0542, 38.9932, 39.0821



35.8639, 38.9932, 48.5874

Rectangle

The Rectangle color scheme consists of four colors that form a rectangle on the color wheel.



39.1448, 38.9932, 46.0207



39.3497, 38.9932, 40.2395



35.0542, 38.9932, 39.0821



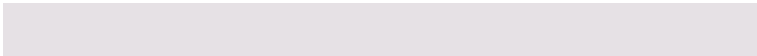
34.8645, 38.9932, 44.7544

Sweetspot

The Sweet Spot groups the original color and five complimentary colors.



39.1459, 38.9949, 46.0215



73.4878, 76.1878, 84.8103



36.9284, 37.8288, 46.9509



15.9418, 16.5409, 18.3908



84.5950, 89.0005, 96.9216



16.2198, 17.0645, 18.5832

Same Dimension

The Same Dimension uses a secret algorithm to generate beautiful new colors.



39.1459, 38.9949, 46.0215



69.0070, 67.7739, 81.6276



38.5275, 38.7475, 42.7650



8.7927, 8.6238, 10.4069



17.1296, 8.3694, 21.6403



0.5541, 0.2694, 0.7606

Inverse Universe

The Inverse Universe completely reimagines the original color for something new.



39.1459, 38.9949, 46.0215



69.0070, 67.7739, 81.6276



38.5230, 42.3337, 45.3987



8.7927, 8.6238, 10.4069



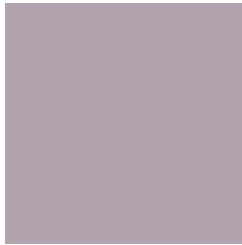
17.1296, 8.3694, 21.6403



0.5541, 0.2694, 0.7606

Previews

White Background



This preview shows how the XYZ color 39.1448, 38.9932, 46.0207 looks on a white background.

Color Contrast Check

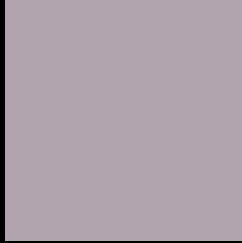
Large Text (above 18pt) WCAG AA × Fail

Any Text WCAG AA × Fail

Large Text (above 18pt) WCAG AAA × Fail

Any Text WCAG AAA × Fail

Black Background



This preview shows how the XYZ color 39.1448, 38.9932, 46.0207 looks on a black background.

Color Contrast Check

Large Text (above 18pt) WCAG AA ✓ Pass

Any Text WCAG AA ✓ Pass

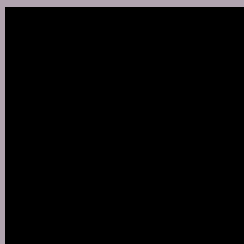
Large Text (above 18pt) WCAG AAA ✓ Pass

Any Text WCAG AAA ✓ Pass

If you want to check with other color combinations, try the [Color Contrast Checker](#).

XYZ 39.1448, 38.9932, 46.0207

Background



This preview shows how black text looks on a background with the XYZ color 39.1448, 38.9932, 46.0207.



This preview shows how white text looks on a background with the XYZ color 39.1448, 38.9932,

Color Blindness Simulation

Color vision deficiency is a very complex topic, and I could not describe the different causes any better than Wikipedia does, so if you want to learn more, you should check out their [article about color blindness](#).

Dichromacy



Original Color

39.1448, 38.9932, 46.0207

Protanopia

37.9030, 39.1366, 47.1514

Deuteranopia

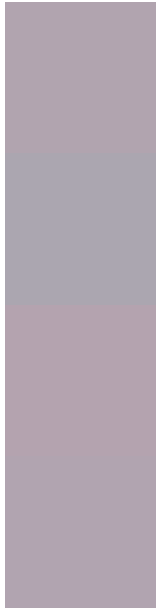
39.8911, 39.1133, 46.0046



Tritanopia

39.3427, 39.0724, 47.0631

Trichromacy



Original Color

39.1448, 38.9932, 46.0207

Protanomaly

38.2673, 39.0650, 46.5977

Deuteranomaly

39.6574, 38.9928, 45.9936

Tritanomaly

39.2434, 39.0326, 46.5400

Monochromacy



Original Color

39.1448, 38.9932, 46.0207

Achromatopsia

37.7116, 39.6755, 43.2066

Achromatomaly

38.1827, 39.3484, 44.1106

CSS Examples

Text

The CSS property to change the color of the text to XYZ 39.1448, 38.9932, 46.0207 is called "color". The color property can be set on classes, ids or directly on the HTML element.

This example shows how text in the color `rgb(177, 164, 175)` looks like.

```
.text, #text, p{  
    color:rgb(177, 164, 175)  
}
```

If you want to add a text shadow in that color use the text-shadow property, you can generate a text shadow directly with our [CSS Text Shadow Generator](#).

Here you see how black text with a 4 pixel rgb(177, 164, 175) colored shadow looks like.

```
.shadow{ text-shadow: 4px 4px 2px rgb(177, 164, 175) }
```

Border

The CSS property to change the border of an element to XYZ 39.1448, 38.9932, 46.0207 is called "border". The border property can be set on classes, ids or directly on the HTML element.

This example shows the color as border, it can be applied via the CSS property "border" or "border-color".

```
.border, #border, table{ border:4px solid rgb(177, 164, 175) }
```


If only the border color should be changed use the property `border-color`.

```
.border{ border-color:rgb(177, 164, 175) }
```

If you want to add a box shadow in that color use:

Here you see how a box with a 4 pixel `rgb(177, 164, 175)` colored shadow looks like.

```
.boxshadow{ -moz-box-shadow:4px 4px 4px  
4px rgb(177, 164, 175); -webkit-box-  
shadow:4px 4px 4px 4px rgb(177, 164, 175);  
box-shadow:4px 4px 4px 4px rgb(177, 164,  
175) }
```

Background

The CSS property to change the background color of an element to XYZ 39.1448, 38.9932, 46.0207 is called "background". The background property can be set on classes, ids or directly on the HTML element.

```
.background, #background, body{  
background: rgb(177, 164, 175) }
```

If only the background color should be changed can be used:

```
.background{ background-color: rgb(177,  
164, 175) }
```

This example shows the color as background, it is applied via the CSS property "background".

To optimize and compress your CSS code, you can use our [online CSS compressor and optimizer](#) based on csstidy. If you want to create a linear or radial gradient as background or border, check our [CSS Gradient Generator](#).

Hey! You found this booklet interesting? Support Converting Colors with the new Membership Option!

The pro membership hides all ads, plus gives you double the colors in the color bucket, and more awesome pro features!

[Learn more, Memberships starting at \\$2.50/m!](#)

**Follow me
on Twitter!**

@ConvertingColor