

Converting Colors

XYZ(39.2221, 38.7463, 34.6048)

Have a look what the booklet for
XYZ(39.2221, 38.7463, 34.6048)
contains.

XYZ(39.2453, 38.7664, 34.6924)	3
<i>Conversions</i>	4
<i>Details</i>	6
<i>Harmonies</i>	12
<i>Previews</i>	24
<i>Color Blindness Simulation</i>	28
<i>CSS Examples</i>	31

Color

**XYZ(39.2453, 38.7664,
34.6924)**

Conversions

Conversions Part 1

Format	Color
Hex	BCA297
RGB	188, 162, 151
RGB Percent	74%, 64%, 59%
CMY	0.2627, 0.3647, 0.4078
CMYK	0.00, 0.14, 0.20, 0.26
HSL	18°, 22%, 66%
HSV	18°, 20%, 74%
XYZ	39.2453, 38.7664, 34.6924
YIQ	168.5200, 19.0270, 2.0910

Conversions

Conversions Part 2

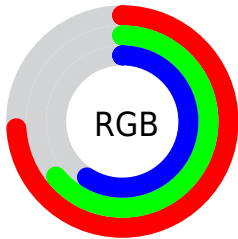
Format	Color
RYB	188, 167, 151
Decimal	12362391
CIELab	68.58, 7.75, 9.23
CIELCh	69, 12.049, 49.992
Yxy	38.7664, 0.3482, 0.3440
Android (android.graphics.Color)	4290552471 (0xFFBCA297)
YUV	168.5200, -8.6374, 17.0840
Hunter-Lab	62.2627, 3.5521, 10.5478

Details

The XYZ color **39.2453, 38.7664, 34.6924** is a light color, and the websafe version is hex **CC9999**. A complement of this color would be **37.5615, 41.6535, 53.6375**, and the grayscale version is **37.5107, 39.4641, 42.9764**.

A 20% lighter version of the original color is **73.4885, 73.4460, 68.0608**, and **17.7077, 17.1403, 14.4317** is the 20% darker color. If you saturate the color by 10%, you get **35.6330, 33.7932, 26.5467**, and if you desaturate by 10%, it is **43.3477, 44.3294, 44.2035**.

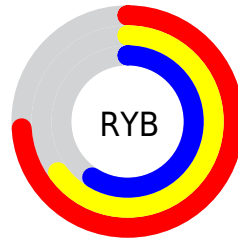
Distribution



Red (74%)

Green (64%)

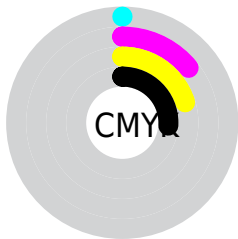
Blue (59%)



Red (74%)

Yellow (65%)

Blue (59%)

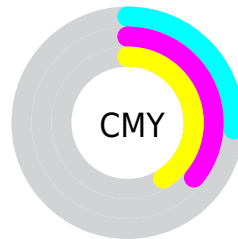


Cyan (0%)

Magenta (14%)

Yellow (20%)

Black (26%)



Cyan (26%)


Magenta (36%)


Yellow (41%)

Brightness & Saturation Gradients


These gradients show how the XYZ color 39.2453, 38.7664, 34.6924 changes by changing the brightness by 10 percent. The first figure shows a shift by +10% for each color and the second figure -10%.


Similar to the brightness gradients but the following saturation gradients show a change of the XYZ color 39.2453, 38.7664, 34.6924 by changing the saturation by 10% instead.


 39.2453, 38.7664,
34.6924


 39.2453, 38.7664,
34.6924


334.1215,
340.8963, 338.0714

 27.1322, 26.5780,
23.1444


 73.3046, 73.2813,
68.1551

 17.8096, 17.2566,
14.4938


 95.9815, 96.3767,
90.9069

 10.9123, 10.4176,
8.3223


122.9103,
123.8765, 118.2303

 6.0747, 5.6767,
4.2111

154.4565,
156.1652, 150.5440

 2.9317, 2.6495,
1.7419

190.9853,
193.6271, 188.2664

 1.1177, 0.9516,
0.3892

232.8622,

 0.0399, 0.0000,

236.6467, 231.8161

0.0000

280.4525,
285.6083, 281.6116

■ 0.0000, 0.0000,
0.0000

■ 39.2453, 38.7664,
34.6924

■ 39.2453, 38.7664,
34.6924

■ 35.6330, 33.7932,
26.5467

■ 43.3477, 44.3294,
44.2035

■ 32.4885, 29.3848,
19.7010

■ 47.9549, 50.4956,
55.1367

■ 29.7926, 25.5224,
14.0877

■ 53.0850, 57.2846,
67.5483

■ 27.5234, 22.1837,
9.6325

■ 58.7542, 64.7133,
81.4908

■ 25.6569, 19.3452,
6.2528

■ 64.9780, 72.7983,
97.0143

■ 24.1665, 16.9811,
3.8547

■ 70.3212, 80.9754,
106.5312

■ 23.0218, 15.0630,
2.3283

■ 74.3797, 89.0924,
107.8841

■ 22.1728, 13.5534,
1.4647

■ 74.5492, 89.4314,
107.9406

■ 22.1490, 13.5111,
1.4405

Harmonies

Analogous

The Analogous color harmony consists of three colors that are next to each other on the color wheel.



40.3873, 38.7664, 38.7330



39.2453, 38.7664, 34.6924



37.4849, 38.7664, 32.7219

Triad

The Triadic color harmony groups three colors that are evenly spaced from another and form a triangle on the color wheel.



39.2453, 38.7664, 34.6924



33.3644, 38.7664, 40.4176



38.1095, 38.7664, 52.8257

Complementary

The Complementary color scheme is a pair of colors which are on the opposite of each other on the color wheel.



39.2453, 38.7664, 34.6924



37.5615, 41.6535, 53.6375

Split Complementary

Split-complementary colors differ from the complementary color scheme. The scheme consists of three colors, the original color and two neighbors of the complement color.



36.2150, 38.7664, 53.3749



39.2453, 38.7664, 34.6924



33.5186, 38.7664, 45.8891

Square

The Square scheme is like the rectangle color scheme, but the four colors are evenly spaced on the color wheel.



39.2453, 38.7664, 34.6924



34.1182, 38.7664, 35.8344



34.5471, 38.7664, 50.7420



39.7160, 38.7664, 49.3003

Rectangle

The Rectangle color scheme consists of four colors that form a rectangle on the color wheel.



39.2453, 38.7664, 34.6924



36.2160, 38.7664, 32.7215



34.5471, 38.7664, 50.7420



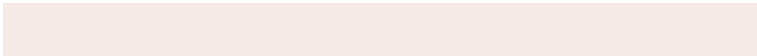
37.4838, 38.7664, 53.3755

Sweetspot

The Sweet Spot groups the original color and five complimentary colors.



39.2463, 38.7682, 34.6932



81.4448, 84.2154, 86.9080



39.7935, 36.0201, 46.7211



17.3998, 17.9565, 18.4184



90.7827, 95.5105, 104.0109



18.6292, 19.5994, 21.3438

Same Dimension

The Same Dimension uses a secret algorithm to generate beautiful new colors.



39.2463, 38.7682, 34.6932



67.9335, 65.8819, 55.6171



42.6432, 45.5619, 35.8255



9.7552, 9.9865, 9.9901



15.1375, 9.3137, 0.9999



0.6519, 0.4827, 0.0588

Inverse Universe

The Inverse Universe completely reimagines the original color for something new.



37.5615, 41.6535, 53.6375



64.2710, 72.1430, 96.7637



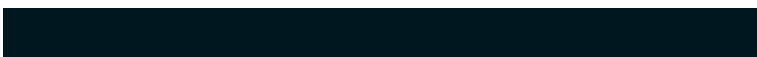
34.2411, 35.0127, 52.5307



9.5625, 10.3173, 12.1596



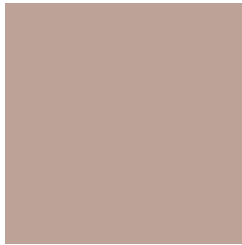
11.8736, 13.8589, 34.4421



0.5195, 0.6517, 1.3673

Previews

White Background



This preview shows how the XYZ color 39.2453, 38.7664, 34.6924 looks on a white background.

Color Contrast Check

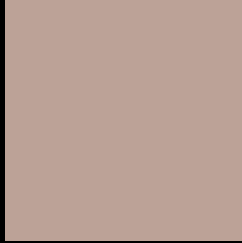
Large Text (above 18pt) WCAG AA × Fail

Any Text WCAG AA × Fail

Large Text (above 18pt) WCAG AAA × Fail

Any Text WCAG AAA × Fail

Black Background



This preview shows how the XYZ color 39.2453, 38.7664, 34.6924 looks on a black background.

Color Contrast Check

Large Text (above 18pt) WCAG AA ✓ Pass

Any Text WCAG AA ✓ Pass

Large Text (above 18pt) WCAG AAA ✓ Pass

Any Text WCAG AAA ✓ Pass

If you want to check with other color combinations, try the [Color Contrast Checker](#).

XYZ 39.2453, 38.7664, 34.6924

Background



This preview shows how black text looks on a background with the XYZ color 39.2453, 38.7664, 34.6924.



This preview shows how white text looks on a background with the XYZ color 39.2453, 38.7664,

Color Blindness Simulation

Color vision deficiency is a very complex topic, and I could not describe the different causes any better than Wikipedia does, so if you want to learn more, you should check out their [article about color blindness](#).

Dichromacy



Original Color

39.2453, 38.7664, 34.6924

Protanopia

37.1070, 38.9692, 36.1379

Deuteranopia

39.5660, 38.6713, 34.6571



Tritanopia

41.2347, 38.8129, 43.8464

Trichromacy



Original Color

39.2453, 38.7664, 34.6924

Protanomaly

37.7953, 38.7939, 35.6329

Deuteranomaly

39.3170, 38.5429, 34.6455

Tritanomaly

40.5069, 38.7691, 40.4702

Monochromacy



Original Color

39.2453, 38.7664, 34.6924

Achromatopsia

37.7116, 39.6755, 43.2066

Achromatomaly

38.0623, 39.1112, 39.7255

CSS Examples

Text

The CSS property to change the color of the text to XYZ 39.2453, 38.7664, 34.6924 is called "color". The color property can be set on classes, ids or directly on the HTML element.

This example shows how text in the color `rgb(188, 162, 151)` looks like.

```
.text, #text, p{  
    color:rgb(188, 162, 151)  
}
```

If you want to add a text shadow in that color use the text-shadow property, you can generate a text shadow directly with our [CSS Text Shadow Generator](#).

Here you see how black text with a 4 pixel rgb(188, 162, 151) colored shadow looks like.

```
.shadow{ text-shadow: 4px 4px 2px rgb(188, 162, 151) }
```

Border

The CSS property to change the border of an element to XYZ 39.2453, 38.7664, 34.6924 is called "border". The border property can be set on classes, ids or directly on the HTML element.

This example shows the color as border, it can be applied via the CSS property "border" or "border-color".

```
.border, #border, table{ border:4px solid rgb(188, 162, 151) }
```


If only the border color should be changed use the property `border-color`.

```
.border{ border-color:rgb(188, 162, 151) }
```

If you want to add a box shadow in that color use:

Here you see how a box with a 4 pixel `rgb(188, 162, 151)` colored shadow looks like.

```
.boxshadow{ -moz-box-shadow:4px 4px 4px  
4px rgb(188, 162, 151); -webkit-box-  
shadow:4px 4px 4px 4px rgb(188, 162, 151);  
box-shadow:4px 4px 4px 4px rgb(188, 162,  
151) }
```

Background

The CSS property to change the background color of an element to XYZ 39.2453, 38.7664, 34.6924 is called "background". The background property can be set on classes, ids or directly on the HTML element.

```
.background, #background, body{  
background: rgb(188, 162, 151) }
```

If only the background color should be changed can be used:

```
.background{ background-color: rgb(188,  
162, 151) }
```

This example shows the color as background, it is applied via the CSS property "background".

To optimize and compress your CSS code, you can use our [online CSS compressor and optimizer](#) based on csstidy. If you want to create a linear or radial gradient as background or border, check our [CSS Gradient Generator](#).

Hey! You found this booklet interesting? Support Converting Colors with the new Membership Option!

The pro membership hides all ads, plus gives you double the colors in the color bucket, and more awesome pro features!

[Learn more, Memberships starting at \\$2.50/m!](#)

**Follow me
on Twitter!**

@ConvertingColor