

Converting Colors

XYZ(39.2532, 36.2362, 34.1683)

Have a look what the booklet for
XYZ(39.2532, 36.2362, 34.1683)
contains.

XYZ(39.3198, 36.2929, 34.2110)	3
<i>Conversions</i>	4
<i>Details</i>	6
<i>Harmonies</i>	12
<i>Previews</i>	24
<i>Color Blindness Simulation</i>	28
<i>CSS Examples</i>	31

Color

**XYZ(39.3198, 36.2929,
34.2110)**

Conversions

Conversions Part 1

Format	Color
Hex	C39897
RGB	195, 152, 151
RGB Percent	76%, 60%, 59%
CMY	0.2353, 0.4039, 0.4078
CMYK	0.00, 0.22, 0.23, 0.24
HSL	1°, 27%, 68%
HSV	1°, 23%, 76%
XYZ	39.3198, 36.2929, 34.2110
YIQ	164.7430, 25.9490, 8.8050

Conversions

Conversions Part 2

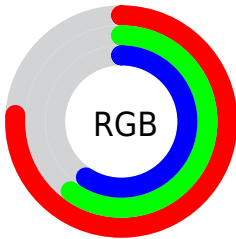
Format	Color
RYB	195, 152, 151
Decimal	12818583
CIELab	66.74, 15.91, 6.69
CIELCh	67, 17.258, 22.823
Yxy	36.2929, 0.3580, 0.3305
Android (android.graphics.Color)	4291008663 (0xFFC39897)
YUV	164.7430, -6.7753, 26.5354
Hunter-Lab	60.2436, 11.0771, 8.5010

Details

The XYZ color **39.3198, 36.2929, 34.2110** is a light color, and the websafe version is hex **CC9999**. A complement of this color would be **41.9041, 49.1017, 58.8990**, and the grayscale version is **35.6646, 37.5219, 40.8614**.

A 20% lighter version of the original color is **73.2356, 69.2458, 67.2635**, and **17.9384, 15.8902, 14.1782** is the 20% darker color. If you saturate the color by 10%, you get **35.0172, 30.0157, 25.5992**, and if you desaturate by 10%, it is **44.3832, 43.6719, 44.3695**.

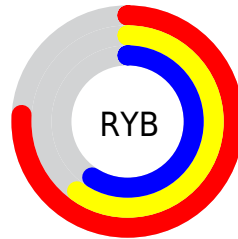
Distribution



Red (76%)

Green (60%)

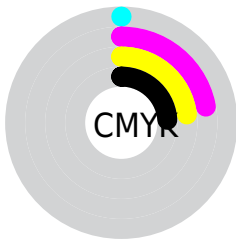
Blue (59%)



Red (76%)

Yellow (60%)

Blue (59%)

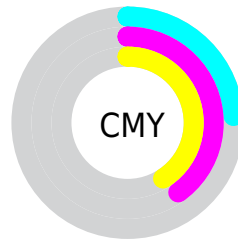


Cyan (0%)

Magenta (22%)

Yellow (23%)

Black (24%)



Cyan (24%)


Magenta (40%)


Yellow (41%)

Brightness & Saturation Gradients


These gradients show how the XYZ color 39.3198, 36.2929, 34.2110 changes by changing the brightness by 10 percent. The first figure shows a shift by +10% for each color and the second figure -10%.


Similar to the brightness gradients but the following saturation gradients show a change of the XYZ color 39.3198, 36.2929, 34.2110 by changing the saturation by 10% instead.


 39.3198, 36.2929,
34.2110


 39.3198, 36.2929,
34.2110

334.4320,
330.2389, 335.8697

 27.1904, 24.6605,
22.7771


 73.4176, 69.4839,
67.3993

 17.8536, 15.8243,
14.2252


 96.1167, 91.8113,
89.9907

 10.9440, 9.3999,
8.1369

123.0697,
118.4725, 117.1385

 6.0962, 5.0029,
4.0937

154.6421,
149.8518, 149.2610

 2.9449, 2.2490,
1.6769

191.1992,
186.3338, 186.7768

 1.1247, 0.7465,
0.3448

233.1063,

 0.0456, 0.0000,

228.3027, 230.1045

0.0000

280.7288,
276.1429, 279.6626

■ 0.0000, 0.0000,
0.0000

■ 39.3198, 36.2929,
34.2110

■ 39.3198, 36.2929,
34.2110

■ 35.0172, 30.0157,
25.5992

■ 44.3832, 43.6719,
44.3695

■ 31.4359, 24.7828,
18.4562

■ 50.2386, 52.1968,
56.1430

■ 28.5372, 20.5391,
12.7008

■ 56.9189, 61.9151,
69.5983

■ 26.2780, 17.2223,
8.2427

■ 64.4543, 72.8704,
84.7980

■ 24.6097, 14.7633,
4.9814

■ 72.8737, 85.1041,
101.8011

■ 23.4772, 13.0831,
2.8013

■ 76.3158, 90.3422,
108.0233

■ 22.8149, 12.0882,
1.5643

■ 22.5541, 11.6987,
1.0693

Harmonies

Analogous

The Analogous color harmony consists of three colors that are next to each other on the color wheel.



39.7060, 36.2929, 41.3359



39.3198, 36.2929, 34.2110



37.6107, 36.2929, 29.1560

Triad

The Triadic color harmony groups three colors that are evenly spaced from another and form a triangle on the color wheel.



39.3198, 36.2929, 34.2110



30.6573, 36.2929, 31.4686



33.8734, 36.2929, 55.5220

Complementary

The Complementary color scheme is a pair of colors which are on the opposite of each other on the color wheel.



39.3198, 36.2929, 34.2110



41.9041, 49.1017, 58.8990

Split Complementary

Split-complementary colors differ from the complementary color scheme. The scheme consists of three colors, the original color and two neighbors of the complement color.



31.5569, 36.2929, 52.0804



39.3198, 36.2929, 34.2110



29.7617, 36.2929, 37.7519

Square

The Square scheme is like the rectangle color scheme, but the four colors are evenly spaced on the color wheel.



39.3198, 36.2929, 34.2110



32.5892, 36.2929, 27.7173



30.0825, 36.2929, 45.3446



36.4743, 36.2929, 54.2641

Rectangle

The Rectangle color scheme consists of four colors that form a rectangle on the color wheel.



39.3198, 36.2929, 34.2110



35.9955, 36.2929, 27.3377



30.0825, 36.2929, 45.3446



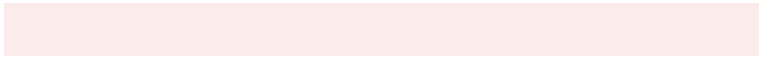
33.0374, 36.2929, 54.8631

Sweetspot

The Sweet Spot groups the original color and five complimentary colors.



39.3208, 36.2946, 34.2117



85.0318, 86.2856, 90.6027



43.3402, 37.6428, 56.1778



18.4791, 18.6890, 19.5556



0.0000, 0.0000, 0.0000



20.3446, 21.4041, 23.3091

Same Dimension

The Same Dimension uses a secret algorithm to generate beautiful new colors.



39.3208, 36.2946, 34.2117



66.5160, 59.3042, 53.4472



43.1765, 44.0060, 35.4970



10.0912, 10.1139, 10.4822



14.6673, 7.6203, 0.6978



0.6402, 0.3422, 0.0323

Inverse Universe

The Inverse Universe completely reimagines the original color for something new.



41.9041, 49.1017, 58.8990



71.9429, 86.2118, 105.3185



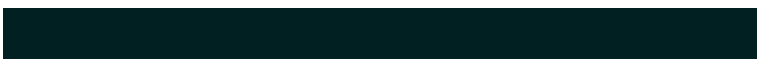
37.4165, 40.1265, 57.4031



10.3482, 11.3877, 12.9375



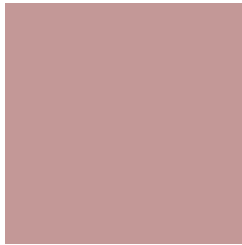
18.4567, 26.6699, 37.7317



0.8038, 1.1650, 1.6324

Previews

White Background



This preview shows how the XYZ color 39.3198, 36.2929, 34.2110 looks on a white background.

Color Contrast Check

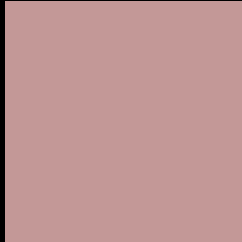
Large Text (above 18pt) WCAG AA × Fail

Any Text WCAG AA × Fail

Large Text (above 18pt) WCAG AAA × Fail

Any Text WCAG AAA × Fail

Black Background



This preview shows how the XYZ color 39.3198, 36.2929, 34.2110 looks on a black background.

Color Contrast Check

Large Text (above 18pt) WCAG AA ✓ Pass

Any Text WCAG AA ✓ Pass

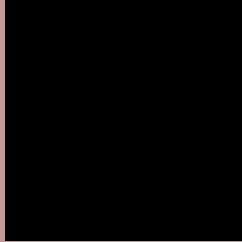
Large Text (above 18pt) WCAG AAA ✓ Pass

Any Text WCAG AAA ✓ Pass

If you want to check with other color combinations, try the [Color Contrast Checker](#).

XYZ 39.3198, 36.2929, 34.2110

Background



This preview shows how black text looks on a background with the XYZ color 39.3198, 36.2929, 34.2110.



This preview shows how white text looks on a background with the XYZ color 39.3198, 36.2929,

Color Blindness Simulation

Color vision deficiency is a very complex topic, and I could not describe the different causes any better than Wikipedia does, so if you want to learn more, you should check out their [article about color blindness](#).

Dichromacy



Original Color

39.3198, 36.2929, 34.2110

Protanopia

34.8574, 36.4565, 36.6521

Deuteranopia

37.0904, 36.3832, 33.9220



Tritanopia

40.1929, 36.1571, 39.0430

Trichromacy



Original Color

39.3198, 36.2929, 34.2110

Protanomaly

36.1911, 36.1339, 35.6389

Deuteranomaly

37.7199, 36.2095, 33.8552

Tritanomaly

40.0031, 36.3376, 37.2532

Monochromacy



Original Color

39.3198, 36.2929, 34.2110

Achromatopsia

35.7637, 37.6262, 40.9749

Achromatomaly

36.8205, 36.9098, 38.4414

CSS Examples

Text

The CSS property to change the color of the text to XYZ 39.3198, 36.2929, 34.2110 is called "color". The color property can be set on classes, ids or directly on the HTML element.

This example shows how text in the color `rgb(195, 152, 151)` looks like.

```
.text, #text, p{  
    color:rgb(195, 152, 151)  
}
```

If you want to add a text shadow in that color use the text-shadow property, you can generate a text shadow directly with our [CSS Text Shadow Generator](#).

Here you see how black text with a 4 pixel rgb(195, 152, 151) colored shadow looks like.

```
.shadow{ text-shadow: 4px 4px 2px rgb(195, 152, 151) }
```

Border

The CSS property to change the border of an element to XYZ 39.3198, 36.2929, 34.2110 is called "border". The border property can be set on classes, ids or directly on the HTML element.

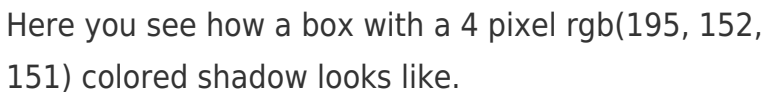
This example shows the color as border, it can be applied via the CSS property "border" or "border-color".

```
.border, #border, table{ border:4px solid rgb(195, 152, 151) }
```


If only the border color should be changed use the property `border-color`.

```
.border{ border-color:rgb(195, 152, 151) }
```

If you want to add a box shadow in that color use:



Here you see how a box with a 4 pixel `rgb(195, 152, 151)` colored shadow looks like.

```
.boxshadow{ -moz-box-shadow:4px 4px 4px  
4px rgb(195, 152, 151); -webkit-box-  
shadow:4px 4px 4px 4px rgb(195, 152, 151);  
box-shadow:4px 4px 4px 4px rgb(195, 152,  
151) }
```

Background

The CSS property to change the background color of an element to XYZ 39.3198, 36.2929, 34.2110 is called "background". The background property can be set on classes, ids or directly on the HTML element.

```
.background, #background, body{  
background: rgb(195, 152, 151) }
```

If only the background color should be changed can be used:

```
.background{ background-color: rgb(195,  
152, 151) }
```

This example shows the color as background, it is applied via the CSS property "background".

To optimize and compress your CSS code, you can use our [online CSS compressor and optimizer](#) based on csstidy. If you want to create a linear or radial gradient as background or border, check our [CSS Gradient Generator](#).

Hey! You found this booklet interesting? Support Converting Colors with the new Membership Option!

The pro membership hides all ads, plus gives you double the colors in the color bucket, and more awesome pro features!

[Learn more, Memberships starting at \\$2.50/m!](#)

**Follow me
on Twitter!**

@ConvertingColor