

Converting Colors

XYZ(39.2597, 36.0524, 34.9082)

Have a look what the booklet for
XYZ(39.2597, 36.0524, 34.9082)
contains.

XYZ(39.3221, 36.0352, 35.0200)	3
<i>Conversions</i>	4
<i>Details</i>	6
<i>Harmonies</i>	12
<i>Previews</i>	24
<i>Color Blindness Simulation</i>	28
<i>CSS Examples</i>	31

Color

**XYZ(39.3221, 36.0352,
35.0200)**

Conversions

Conversions Part 1

Format	Color
Hex	C39799
RGB	195, 151, 153
RGB Percent	76%, 59%, 60%
CMY	0.2353, 0.4078, 0.4000
CMYK	0.00, 0.23, 0.22, 0.24
HSL	357°, 27%, 68%
HSV	357°, 23%, 76%
XYZ	39.3221, 36.0352, 35.0200
YIQ	164.3840, 25.5820, 9.9500

Conversions

Conversions Part 2

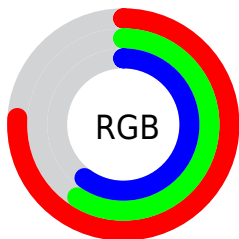
Format	Color
RYB	195, 151, 153
Decimal	12818329
CIELab	66.55, 16.76, 5.29
CIElCh	67, 17.576, 17.524
Yxy	36.0352, 0.3563, 0.3265
Android (android.graphics.Color)	4291008409 (0xFFC39799)
YUV	164.3840, -5.6123, 26.8502
Hunter-Lab	60.0293, 11.8748, 7.4318

Details

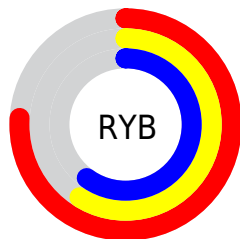
The XYZ color **39.3221, 36.0352, 35.0200** is a light color, and the websafe version is hex **CC9999**. A complement of this color would be **41.9047, 49.4607, 57.7928**, and the grayscale version is **35.4877, 37.3359, 40.6588**.

A 20% lighter version of the original color is **73.2387, 68.8631, 68.4633**, and **17.9399, 15.7364, 14.6623** is the 20% darker color. If you saturate the color by 10%, you get **35.0202, 29.7027, 26.5831**, and if you desaturate by 10%, it is **44.3850, 43.5051, 44.8948**.

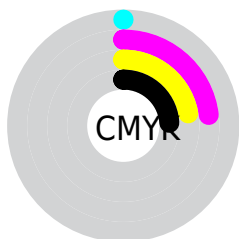
Distribution



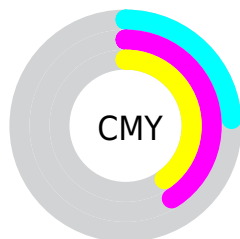
- Red (76%)
- Green (59%)
- Blue (60%)



- Red (76%)
- Yellow (59%)
- Blue (60%)



- Cyan (0%)
- Magenta (23%)
- Yellow (22%)
- Black (24%)





- Cyan (24%)
- Magenta (41%)
- Yellow (40%)

Brightness & Saturation Gradients


These gradients show how the XYZ color 39.3221, 36.0352, 35.0200 changes by changing the brightness by 10 percent. The first figure shows a shift by +10% for each color and the second figure -10%.


Similar to the brightness gradients but the following saturation gradients show a change of the XYZ color 39.3221, 36.0352, 35.0200 by changing the saturation by 10% instead.


 39.3221, 36.0352,
35.0200


 39.3221, 36.0352,
35.0200

334.4416,
329.1144, 339.5635

 27.1922, 24.4614,
23.3946


 73.4210, 69.0864,
68.6687

 17.8550, 15.6762,
14.6771

 96.1208, 91.3326,
91.5290

 10.9450, 9.2953,
8.4490


123.0747,
117.9050, 118.9715

 6.0969, 4.9343,
4.2917

154.6479,
149.1880, 151.4145

 2.9453, 2.2088,
1.7867

191.2058,
185.5661, 189.2767

 1.1249, 0.7248,
0.4192

233.1138,

 0.0458, 0.0000,

227.4235, 232.9766

0.0000

280.7373,
275.1449, 282.9327

■ 0.0000, 0.0000,
0.0000

■ 39.3221, 36.0352,
35.0200

■ 39.3221, 36.0352,
35.0200

■ 35.0202, 29.7027,
26.5831

■ 44.3850, 43.5051,
44.8948

■ 31.4396, 24.4472,
19.5149

■ 50.2400, 52.1590,
56.2677

■ 28.5418, 20.2102,
13.7440

■ 56.9200, 62.0471,
69.1984

■ 26.2833, 16.9257,
9.1914

■ 64.4555, 73.2151,
83.7425

■ 24.6157, 14.5201,
5.7699

■ 72.8751, 85.7065,
99.9529

■ 23.4837, 12.9088,
3.3802

■ 76.3159, 90.3422,
108.0233

■ 22.8214, 11.9907,
1.9063

■ 22.5544, 11.6216,
1.3086

Harmonies

Analogous

The Analogous color harmony consists of three colors that are next to each other on the color wheel.



39.4491, 36.0352, 42.4611



39.3221, 36.0352, 35.0200



37.7935, 36.0352, 29.4617

Triad

The Triadic color harmony groups three colors that are evenly spaced from another and form a triangle on the color wheel.



39.3221, 36.0352, 35.0200



30.6415, 36.0352, 30.2159



33.1655, 36.0352, 55.2095

Complementary

The Complementary color scheme is a pair of colors which are on the opposite of each other on the color wheel.



39.3221, 36.0352, 35.0200



41.9047, 49.4607, 57.7928

Split Complementary

Split-complementary colors differ from the complementary color scheme. The scheme consists of three colors, the original color and two neighbors of the complement color.



30.9359, 36.0352, 50.9639



39.3221, 36.0352, 35.0200



29.5297, 36.0352, 36.1789

Square

The Square scheme is like the rectangle color scheme, but the four colors are evenly spaced on the color wheel.



39.3221, 36.0352, 35.0200



32.7447, 36.0352, 26.9427



29.6346, 36.0352, 43.7779



35.8015, 36.0352, 54.7945

Rectangle

The Rectangle color scheme consists of four colors that form a rectangle on the color wheel.



39.3221, 36.0352, 35.0200



36.2277, 36.0352, 27.2785



29.6346, 36.0352, 43.7779



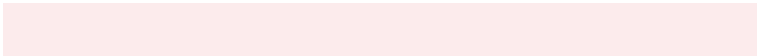
32.3464, 36.0352, 54.2595

Sweetspot

The Sweet Spot groups the original color and five complimentary colors.



39.3231, 36.0369, 35.0207



85.0324, 86.1012, 91.1752



42.8594, 37.3862, 56.5875



18.4793, 18.6455, 19.6907



0.0000, 0.0000, 0.0000



20.3446, 21.4041, 23.3091

Same Dimension

The Same Dimension uses a secret algorithm to generate beautiful new colors.



39.3231, 36.0369, 35.0207



66.5191, 58.7848, 55.0688



42.6179, 42.8881, 35.3122



10.0913, 10.0851, 10.5714



14.6674, 7.5567, 0.8949



0.6403, 0.3291, 0.0730

Inverse Universe

The Inverse Universe completely reimagines the original color for something new.



39.3231, 36.0369, 35.0207



66.5191, 58.7848, 55.0688



37.9832, 41.2587, 57.5920



10.0913, 10.0851, 10.5714



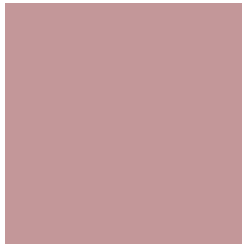
14.6674, 7.5567, 0.8949



0.6403, 0.3291, 0.0730

Previews

White Background



This preview shows how the XYZ color 39.3221, 36.0352, 35.0200 looks on a white background.

Color Contrast Check

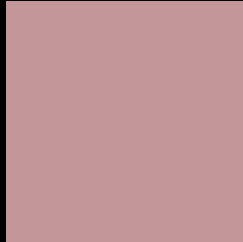
Large Text (above 18pt) WCAG AA × Fail

Any Text WCAG AA × Fail

Large Text (above 18pt) WCAG AAA × Fail

Any Text WCAG AAA × Fail

Black Background



This preview shows how the XYZ color 39.3221, 36.0352, 35.0200 looks on a black background.

Color Contrast Check

Large Text (above 18pt) WCAG AA ✓ Pass

Any Text WCAG AA ✓ Pass

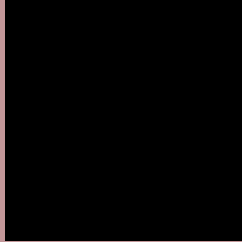
Large Text (above 18pt) WCAG AAA ✓ Pass

Any Text WCAG AAA ✓ Pass

If you want to check with other color combinations, try the [Color Contrast Checker](#).

XYZ 39.3221, 36.0352, 35.0200

Background



This preview shows how black text looks on a background with the XYZ color 39.3221, 36.0352, 35.0200.



This preview shows how white text looks on a background with the XYZ color 39.3221, 36.0352,

35.0200.

Color Blindness Simulation

Color vision deficiency is a very complex topic, and I could not describe the different causes any better than Wikipedia does, so if you want to learn more, you should check out their [article about color blindness](#).

Dichromacy



Original Color

39.3221, 36.0352, 35.0200

Protanopia

34.7288, 36.0999, 37.9385

Deuteranopia

37.0159, 36.3260, 34.7664



Tritanopia

40.1043, 36.1217, 38.5767

Trichromacy



Original Color

39.3221, 36.0352, 35.0200

Protanomaly

36.2742, 35.8954, 36.9149

Deuteranomaly

37.8824, 36.2745, 34.7108

Tritanomaly

39.8429, 36.0171, 37.1998

Monochromacy



Original Color

39.3221, 36.0352, 35.0200

Achromatopsia

35.2861, 37.1238, 40.4278

Achromatomaly

36.4225, 36.4483, 38.3733

CSS Examples

Text

The CSS property to change the color of the text to XYZ 39.3221, 36.0352, 35.0200 is called "color". The color property can be set on classes, ids or directly on the HTML element.

This example shows how text in the color `rgb(195, 151, 153)` looks like.

```
.text, #text, p{  
    color:rgb(195, 151, 153)  
}
```

If you want to add a text shadow in that color use the text-shadow property, you can generate a text shadow directly with our [CSS Text Shadow Generator](#).

Here you see how black text with a 4 pixel rgb(195, 151, 153) colored shadow looks like.

```
.shadow{ text-shadow: 4px 4px 2px rgb(195, 151, 153) }
```

Border

The CSS property to change the border of an element to XYZ 39.3221, 36.0352, 35.0200 is called "border". The border property can be set on classes, ids or directly on the HTML element.

This example shows the color as border, it can be applied via the CSS property "border" or "border-color".

```
.border, #border, table{ border:4px solid rgb(195, 151, 153) }
```


If only the border color should be changed use the property `border-color`.

```
.border{ border-color:rgb(195, 151, 153) }
```

If you want to add a box shadow in that color use:

Here you see how a box with a 4 pixel `rgb(195, 151, 153)` colored shadow looks like.

```
.boxshadow{ -moz-box-shadow:4px 4px 4px  
4px rgb(195, 151, 153); -webkit-box-  
shadow:4px 4px 4px 4px rgb(195, 151, 153);  
box-shadow:4px 4px 4px 4px rgb(195, 151,  
153) }
```

Background

The CSS property to change the background color of an element to XYZ 39.3221, 36.0352, 35.0200 is called "background". The background property can be set on classes, ids or directly on the HTML element.

```
.background, #background, body{  
background: rgb(195, 151, 153) }
```

If only the background color should be changed can be used:

```
.background{ background-color: rgb(195,  
151, 153) }
```

This example shows the color as background, it is applied via the CSS property "background".

To optimize and compress your CSS code, you can use our [online CSS compressor and optimizer](#) based on csstidy. If you want to create a linear or radial gradient as background or border, check our [CSS Gradient Generator](#).

Hey! You found this booklet interesting? Support Converting Colors with the new Membership Option!

The pro membership hides all ads, plus gives you double the colors in the color bucket, and more awesome pro features!

[Learn more, Memberships starting at \\$2.50/m!](#)

**Follow me
on Twitter!**

@ConvertingColor