

Converting Colors

XYZ(39.4421, 37.4456, 36.2646)

Have a look what the booklet for
XYZ(39.4421, 37.4456, 36.2646)
contains.

XYZ(39.4592, 37.5569, 36.1798)	3
<i>Conversions</i>	4
<i>Details</i>	6
<i>Harmonies</i>	12
<i>Previews</i>	24
<i>Color Blindness Simulation</i>	28
<i>CSS Examples</i>	31

Color

**XYZ(39.4592, 37.5569,
36.1798)**

Conversions

Conversions Part 1

Format	Color
Hex	BF9D9B
RGB	191, 157, 155
RGB Percent	75%, 62%, 61%
CMY	0.2510, 0.3843, 0.3922
CMYK	0.00, 0.18, 0.19, 0.25
HSL	3°, 22%, 68%
HSV	3°, 19%, 75%
XYZ	39.4592, 37.5569, 36.1798
YIQ	166.9380, 20.9060, 6.5860

Conversions

Conversions Part 2

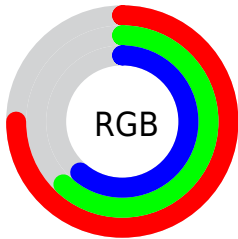
Format	Color
R_{YB}	191, 157, 155
Decimal	12557723
CIE _{Lab}	67.69, 12.25, 5.77
CIE _{LCh}	68, 13.545, 25.221
Yxy	37.5569, 0.3486, 0.3318
Android (android.graphics.Color)	4290747803 (0xFFBF9D9B)
YUV	166.9380, -5.8854, 21.1024
Hunter-Lab	61.2837, 7.6857, 7.8958

Details

The XYZ color **39.4592, 37.5569, 36.1798** is a light color, and the websafe version is hex **CC9999**. A complement of this color would be **41.1186, 47.1240, 56.2191**, and the grayscale version is **36.7219, 38.6343, 42.0727**.

A 20% lighter version of the original color is **73.7635, 71.6469, 70.2631**, and **17.9693, 16.6259, 15.3587** is the 20% darker color. If you saturate the color by 10%, you get **35.1508, 31.3071, 27.4459**, and if you desaturate by 10%, it is **44.4739, 44.8126, 46.4018**.

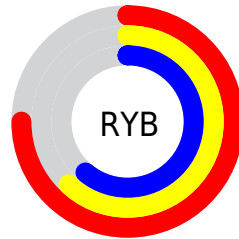
Distribution



Red (75%)

Green (62%)

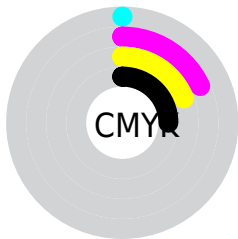
Blue (61%)



Red (75%)

Yellow (62%)

Blue (61%)

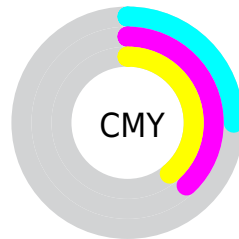


Cyan (0%)

Magenta (18%)

Yellow (19%)

Black (25%)



Cyan (25%)


Magenta (38%)


Yellow (39%)

Brightness & Saturation Gradients


These gradients show how the XYZ color 39.4592, 37.5569, 36.1798 changes by changing the brightness by 10 percent. The first figure shows a shift by +10% for each color and the second figure -10%.


Similar to the brightness gradients but the following saturation gradients show a change of the XYZ color 39.4592, 37.5569, 36.1798 by changing the saturation by 10% instead.


 39.4592, 37.5569,
36.1798


 39.4592, 37.5569,
36.1798


335.0125,
335.7153, 344.8069

 27.2995, 25.6390,
24.2823


 73.6289, 71.4285,
70.4817

 17.9360, 16.5537,
15.3290


 96.3696, 94.1509,
93.7231

 11.0035, 9.9168,
8.9014


123.3679,
121.2436, 121.5829

 6.1365, 5.3439,
4.5810

154.9893,
153.0910, 154.4797

 2.9697, 2.4504,
1.9492

191.5991,
190.0775, 192.8319

 1.1378, 0.8516,
0.5238

233.5627,

 0.0564, 0.0000,

232.5875, 237.0582

0.0000

281.2454,
281.0053, 287.5770

■ 0.0000, 0.0000,
0.0000

■ 39.4592, 37.5569,
36.1798

■ 39.4592, 37.5569,
36.1798

■ 35.1508, 31.3071,
27.4459

■ 44.4739, 44.8126,
46.4018

■ 31.5141, 26.0141,
20.1286

■ 50.2214, 53.1104,
58.1742

■ 28.5162, 21.6321,
14.1538

■ 56.7306, 62.4911,
71.5587

■ 26.1200, 18.1097,
9.4401

■ 64.0280, 72.9916,
86.6129

■ 24.2849, 15.3904,
5.8968

■ 72.1387, 84.6474,
103.3916

■ 22.9651, 13.4109,
3.4216

■ 75.2959, 89.8164,
107.9755

■ 22.1075, 12.0985,
1.8942

■ 21.6382, 11.3617,
1.1158

■ 21.6014, 11.3074,
1.0440

Harmonies

Analogous

The Analogous color harmony consists of three colors that are next to each other on the color wheel.



39.8554, 37.5569, 41.8599



39.4592, 37.5569, 36.1798



38.0397, 37.5569, 32.1452

Triad

The Triadic color harmony groups three colors that are evenly spaced from another and form a triangle on the color wheel.



39.4592, 37.5569, 36.1798



32.4949, 37.5569, 34.6700



35.3628, 37.5569, 53.4754

Complementary

The Complementary color scheme is a pair of colors which are on the opposite of each other on the color wheel.



39.4592, 37.5569, 36.1798



41.1186, 47.1240, 56.2191

Split Complementary

Split-complementary colors differ from the complementary color scheme. The scheme consists of three colors, the original color and two neighbors of the complement color.



33.4520, 37.5569, 51.0994



39.4592, 37.5569, 36.1798



31.8379, 37.5569, 39.9413

Square

The Square scheme is like the rectangle color scheme, but the four colors are evenly spaced on the color wheel.



39.4592, 37.5569, 36.1798



34.0106, 37.5569, 31.3350



32.1813, 37.5569, 45.9989



37.4376, 37.5569, 52.2204

Rectangle

The Rectangle color scheme consists of four colors that form a rectangle on the color wheel.



39.4592, 37.5569, 36.1798



36.7322, 37.5569, 30.7386



32.1813, 37.5569, 45.9989



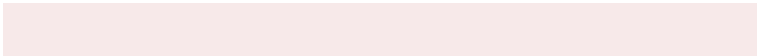
34.6808, 37.5569, 53.0687

Sweetspot

The Sweet Spot groups the original color and five complimentary colors.



39.4602, 37.5586, 36.1806



82.3531, 84.1608, 88.6277



42.4146, 38.2023, 53.3965



17.9397, 18.2724, 19.1665



92.9021, 97.7402, 106.4391



19.4759, 20.4902, 22.3138

Same Dimension

The Same Dimension uses a secret algorithm to generate beautiful new colors.



39.4602, 37.5586, 36.1806



67.0346, 61.9931, 57.4117



42.6936, 44.0254, 37.2584



9.5716, 9.6193, 9.9289



14.2157, 7.4703, 0.6927



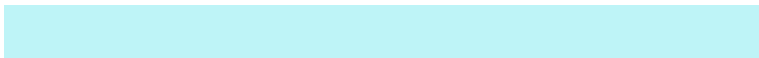
0.5716, 0.3221, 0.0320

Inverse Universe

The Inverse Universe completely reimagines the original color for something new.



41.1186, 47.1240, 56.2191



70.5986, 82.5552, 100.4929



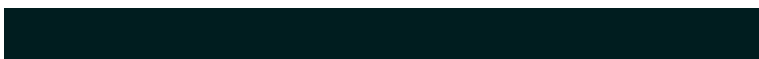
37.5226, 39.9320, 55.0204



9.7619, 10.7161, 12.2261



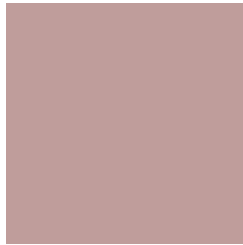
16.9751, 24.0620, 36.1426



0.6789, 0.9705, 1.4204

Previews

White Background



This preview shows how the XYZ color 39.4592, 37.5569, 36.1798 looks on a white background.

Color Contrast Check

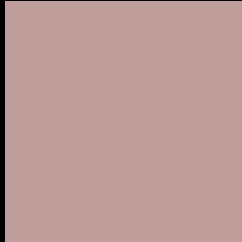
Large Text (above 18pt) WCAG AA × Fail

Any Text WCAG AA × Fail

Large Text (above 18pt) WCAG AAA × Fail

Any Text WCAG AAA × Fail

Black Background



This preview shows how the XYZ color 39.4592, 37.5569, 36.1798 looks on a black background.

Color Contrast Check

Large Text (above 18pt) WCAG AA ✓ Pass

Any Text WCAG AA ✓ Pass

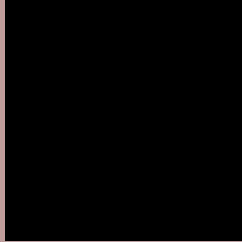
Large Text (above 18pt) WCAG AAA ✓ Pass

Any Text WCAG AAA ✓ Pass

If you want to check with other color combinations, try the [Color Contrast Checker](#).

XYZ 39.4592, 37.5569, 36.1798

Background



This preview shows how black text looks on a background with the XYZ color 39.4592, 37.5569, 36.1798.



This preview shows how white text looks on a background with the XYZ color 39.4592, 37.5569,

Color Blindness Simulation

Color vision deficiency is a very complex topic, and I could not describe the different causes any better than Wikipedia does, so if you want to learn more, you should check out their [article about color blindness](#).

Dichromacy



Original Color

39.4592, 37.5569, 36.1798

Protanopia

35.8957, 37.4891, 38.1451

Deuteranopia

38.3221, 37.4771, 36.2244



Tritanopia

40.4346, 37.4392, 41.6546

Trichromacy



Original Color

39.4592, 37.5569, 36.1798

Protanomaly

37.0479, 37.3055, 37.5958

Deuteranomaly

38.6368, 37.3851, 36.1900

Tritanomaly

40.2376, 37.6277, 39.7925

Monochromacy



Original Color

39.4592, 37.5569, 36.1798

Achromatopsia

36.7301, 38.6429, 42.0822

Achromatomaly

37.6125, 38.0688, 40.0160

CSS Examples

Text

The CSS property to change the color of the text to XYZ 39.4592, 37.5569, 36.1798 is called "color". The color property can be set on classes, ids or directly on the HTML element.

This example shows how text in the color `rgb(191, 157, 155)` looks like.

```
.text, #text, p{  
    color:rgb(191, 157, 155)  
}
```

If you want to add a text shadow in that color use the text-shadow property, you can generate a text shadow directly with our [CSS Text Shadow Generator](#).

Here you see how black text with a 4 pixel rgb(191, 157, 155) colored shadow looks like.

```
.shadow{ text-shadow: 4px 4px 2px rgb(191, 157, 155) }
```

Border

The CSS property to change the border of an element to XYZ 39.4592, 37.5569, 36.1798 is called "border". The border property can be set on classes, ids or directly on the HTML element.

This example shows the color as border, it can be applied via the CSS property "border" or "border-color".

```
.border, #border, table{ border:4px solid rgb(191, 157, 155) }
```


If only the border color should be changed use the property `border-color`.

```
.border{ border-color:rgb(191, 157, 155) }
```

If you want to add a box shadow in that color use:

Here you see how a box with a 4 pixel `rgb(191, 157, 155)` colored shadow looks like.

```
.boxshadow{ -moz-box-shadow:4px 4px 4px  
4px rgb(191, 157, 155); -webkit-box-  
shadow:4px 4px 4px 4px rgb(191, 157, 155);  
box-shadow:4px 4px 4px 4px rgb(191, 157,  
155) }
```

Background

The CSS property to change the background color of an element to XYZ 39.4592, 37.5569, 36.1798 is called "background". The background property can be set on classes, ids or directly on the HTML element.

```
.background, #background, body{  
background: rgb(191, 157, 155) }
```

If only the background color should be changed can be used:

```
.background{ background-color: rgb(191,  
157, 155) }
```

This example shows the color as background, it is applied via the CSS property "background".

To optimize and compress your CSS code, you can use our [online CSS compressor and optimizer](#) based on csstidy. If you want to create a linear or radial gradient as background or border, check our [CSS Gradient Generator](#).

Hey! You found this booklet interesting? Support Converting Colors with the new Membership Option!

The pro membership hides all ads, plus gives you double the colors in the color bucket, and more awesome pro features!

[Learn more, Memberships starting at \\$2.50/m!](#)

**Follow me
on Twitter!**

@ConvertingColor