

Converting Colors

XYZ(39.5025, 38.0054, 39.9041)

Have a look what the booklet for
XYZ(39.5025, 38.0054, 39.9041)
contains.

XYZ(39.5025, 38.0054, 39.9041)	3
<i>Conversions</i>	4
<i>Details</i>	6
<i>Harmonies</i>	12
<i>Previews</i>	24
<i>Color Blindness Simulation</i>	28
<i>CSS Examples</i>	31

Color

**XYZ(39.5025, 38.0054,
39.9041)**

Conversions

Conversions Part 1

Format	Color
Hex	BB9FA3
RGB	187, 159, 163
RGB Percent	73%, 62%, 64%
CMY	0.2667, 0.3765, 0.3608
CMYK	0.00, 0.15, 0.13, 0.27
HSL	351°, 17%, 68%
HSV	351°, 15%, 73%
XYZ	39.5025, 38.0054, 39.9041
YIQ	167.8280, 15.4040, 7.1800

Conversions

Conversions Part 2

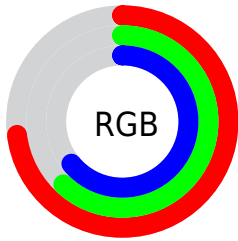
Format	Color
RYB	187, 159, 163
Decimal	12296099
CIELab	68.02, 10.96, 1.74
CIELCh	68, 11.098, 9.046
Yxy	38.0054, 0.3364, 0.3237
Android (android.graphics.Color)	4290486179 (0xFFBB9FA3)
YUV	167.8280, -2.3802, 16.8138
Hunter-Lab	61.6485, 6.4925, 4.7765

Details

The XYZ color **39.5025, 38.0054, 39.9041** is a light color, and the websafe version is hex **CC9999**. A complement of this color would be **40.6171, 46.3314, 51.6041**, and the grayscale version is **37.1420, 39.0762, 42.5540**.

A 20% lighter version of the original color is **73.6636, 72.2098, 76.3851**, and **18.0633, 16.9412, 17.3569** is the 20% darker color. If you saturate the color by 10%, you get **35.1805, 31.5158, 31.8206**, and if you desaturate by 10%, it is **44.4953, 45.5442, 49.1104**.

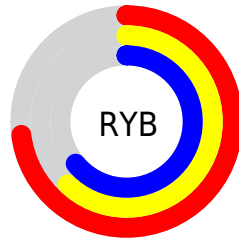
Distribution



Red (73%)

Green (62%)

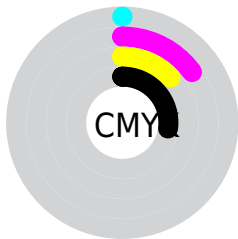
Blue (64%)



Red (73%)

Yellow (62%)

Blue (64%)

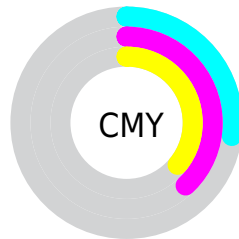


Cyan (0%)

Magenta (15%)

Yellow (13%)

Black (27%)



Cyan (27%)


Magenta (38%)


Yellow (36%)

Brightness & Saturation Gradients


These gradients show how the XYZ color 39.5025, 38.0054, 39.9041 changes by changing the brightness by 10 percent. The first figure shows a shift by +10% for each color and the second figure -10%.


Similar to the brightness gradients but the following saturation gradients show a change of the XYZ color 39.5025, 38.0054, 39.9041 by changing the saturation by 10% instead.


 39.5025, 38.0054,
39.9041


 39.5025, 38.0054,
39.9041


335.1927,
337.6431, 361.2593

 27.3333, 25.9869,
27.1506


 73.6945, 72.1164,
76.2529

 17.9616, 16.8138,
17.4529


 96.4481, 94.9777,
100.6853

 11.0220, 10.1018,
10.3926


123.4605,
122.2220, 129.8478

 6.1490, 5.4665,
5.5510

155.0971,
154.2338, 164.1588

 2.9774, 2.5235,
2.5097

191.7233,
191.3974, 204.0369

 1.1418, 0.8884,
0.8453

233.7044,

 0.0597, 0.0000,

234.0972, 249.9006

0.0000

281.4057,
282.7177, 302.1686

■ 0.0000, 0.0000,
0.0000

■ 39.5025, 38.0054,
39.9041

■ 39.5025, 38.0054,
39.9041

■ 35.1805, 31.5158,
31.8206

■ 44.4953, 45.5442,
49.1104

■ 31.4974, 26.0241,
24.8145

■ 50.1824, 54.1705,
59.4777

■ 28.4237, 21.4821,
18.8407

■ 56.5903, 63.9269,
71.0455

■ 25.9262, 17.8358,
13.8503

■ 63.7431, 74.8523,
83.8506

■ 23.9685, 15.0258,
9.7900

■ 71.6638, 86.9836,
97.9283

■ 22.5101, 12.9854,
6.6016

■ 74.3037, 89.3049,
107.9291

■ 21.5043, 11.6375,
4.2203

■ 20.8955, 10.8889,
2.5717

■ 20.6880, 10.6426,
1.9824

Harmonies

Analogous

The Analogous color harmony consists of three colors that are next to each other on the color wheel.



39.3136, 38.0054, 44.8763



39.5025, 38.0054, 39.9041



38.7637, 38.0054, 35.6751

Triad

The Triadic color harmony groups three colors that are evenly spaced from another and form a triangle on the color wheel.



39.5025, 38.0054, 39.9041



34.0713, 38.0054, 34.4264



34.9485, 38.0054, 50.9129

Complementary

The Complementary color scheme is a pair of colors which are on the opposite of each other on the color wheel.



39.5025, 38.0054, 39.9041



40.6171, 46.3314, 51.6041

Split Complementary

Split-complementary colors differ from the complementary color scheme. The scheme consists of three colors, the original color and two neighbors of the complement color.



33.6050, 38.0054, 47.6659



39.5025, 38.0054, 39.9041



33.1099, 38.0054, 38.0729

Square

The Square scheme is like the rectangle color scheme, but the four colors are evenly spaced on the color wheel.



39.5025, 38.0054, 39.9041



35.6034, 38.0054, 32.6824



32.9419, 38.0054, 42.8948



36.6476, 38.0054, 51.5014

Rectangle

The Rectangle color scheme consists of four colors that form a rectangle on the color wheel.



39.5025, 38.0054, 39.9041



37.8580, 38.0054, 33.7499



32.9419, 38.0054, 42.8948



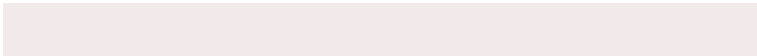
34.4418, 38.0054, 50.0844

Sweetspot

The Sweet Spot groups the original color and five complimentary colors.



39.5036, 38.0071, 39.9049



80.5615, 82.8878, 89.5521



40.8498, 38.4286, 52.2786



17.5804, 18.0102, 19.4268



90.7827, 95.5105, 104.0109



18.6292, 19.5994, 21.3438

Same Dimension

The Same Dimension uses a secret algorithm to generate beautiful new colors.



39.5036, 38.0071, 39.9049



68.0494, 64.0067, 66.4432



40.9035, 41.3710, 38.6325



9.5842, 9.5580, 10.1993



14.2706, 7.3394, 1.4527



0.5770, 0.2947, 0.1519

Inverse Universe

The Inverse Universe completely reimagines the original color for something new.



39.5036, 38.0071, 39.9049



68.0494, 64.0067, 66.4432



39.0308, 42.4834, 53.1571



9.5842, 9.5580, 10.1993



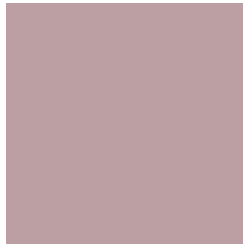
14.2706, 7.3394, 1.4527



0.5770, 0.2947, 0.1519

Previews

White Background



This preview shows how the XYZ color 39.5025, 38.0054, 39.9041 looks on a white background.

Color Contrast Check

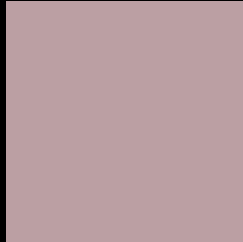
Large Text (above 18pt) WCAG AA × Fail

Any Text WCAG AA × Fail

Large Text (above 18pt) WCAG AAA × Fail

Any Text WCAG AAA × Fail

Black Background



This preview shows how the XYZ color 39.5025, 38.0054, 39.9041 looks on a black background.

Color Contrast Check

Large Text (above 18pt) WCAG AA ✓ Pass

Any Text WCAG AA ✓ Pass

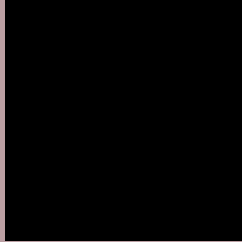
Large Text (above 18pt) WCAG AAA ✓ Pass

Any Text WCAG AAA ✓ Pass

If you want to check with other color combinations, try the [Color Contrast Checker](#).

XYZ 39.5025, 38.0054, 39.9041

Background



This preview shows how black text looks on a background with the XYZ color 39.5025, 38.0054, 39.9041.



This preview shows how white text looks on a background with the XYZ color 39.5025, 38.0054,

Color Blindness Simulation

Color vision deficiency is a very complex topic, and I could not describe the different causes any better than Wikipedia does, so if you want to learn more, you should check out their [article about color blindness](#).

Dichromacy



Original Color

39.5025, 38.0054, 39.9041

Protanopia

36.7003, 38.0985, 41.4958

Deuteranopia

38.8842, 38.2014, 39.9745



Tritanopia

40.2216, 38.0474, 43.2542

Trichromacy



Original Color

39.5025, 38.0054, 39.9041

Protanomaly

37.7932, 38.1411, 40.9674

Deuteranomaly

38.9488, 37.9763, 39.9277

Tritanomaly

39.9409, 37.9351, 41.7763

Monochromacy



Original Color

39.5025, 38.0054, 39.9041

Achromatopsia

37.2190, 39.1572, 42.6422

Achromatomaly

38.0173, 38.7774, 41.5575

CSS Examples

Text

The CSS property to change the color of the text to XYZ 39.5025, 38.0054, 39.9041 is called "color". The color property can be set on classes, ids or directly on the HTML element.

This example shows how text in the color `rgb(187, 159, 163)` looks like.

```
.text, #text, p{  
    color:rgb(187, 159, 163)  
}
```

If you want to add a text shadow in that color use the text-shadow property, you can generate a text shadow directly with our [CSS Text Shadow Generator](#).

Here you see how black text with a 4 pixel rgb(187, 159, 163) colored shadow looks like.

```
.shadow{ text-shadow: 4px 4px 2px rgb(187, 159, 163) }
```

Border

The CSS property to change the border of an element to XYZ 39.5025, 38.0054, 39.9041 is called "border". The border property can be set on classes, ids or directly on the HTML element.

This example shows the color as border, it can be applied via the CSS property "border" or "border-color".

```
.border, #border, table{ border:4px solid rgb(187, 159, 163) }
```


If only the border color should be changed use the property `border-color`.

```
.border{ border-color:rgb(187, 159, 163) }
```

If you want to add a box shadow in that color use:

Here you see how a box with a 4 pixel `rgb(187, 159, 163)` colored shadow looks like.

```
.boxshadow{ -moz-box-shadow:4px 4px 4px  
4px rgb(187, 159, 163); -webkit-box-  
shadow:4px 4px 4px 4px rgb(187, 159, 163);  
box-shadow:4px 4px 4px 4px rgb(187, 159,  
163) }
```

Background

The CSS property to change the background color of an element to XYZ 39.5025, 38.0054, 39.9041 is called "background". The background property can be set on classes, ids or directly on the HTML element.

```
.background, #background, body{  
background: rgb(187, 159, 163) }
```

If only the background color should be changed can be used:

```
.background{ background-color: rgb(187,  
159, 163) }
```

This example shows the color as background, it is applied via the CSS property "background".

To optimize and compress your CSS code, you can use our [online CSS compressor and optimizer](#) based on csstidy. If you want to create a linear or radial gradient as background or border, check our [CSS Gradient Generator](#).

Hey! You found this booklet interesting? Support Converting Colors with the new Membership Option!

The pro membership hides all ads, plus gives you double the colors in the color bucket, and more awesome pro features!

[Learn more, Memberships starting at \\$2.50/m!](#)

**Follow me
on Twitter!**

@ConvertingColor