

Converting Colors

XYZ(39.5738, 36.8150, 35.4041)

Have a look what the booklet for
XYZ(39.5738, 36.8150, 35.4041)
contains.

XYZ(39.6365, 36.9136, 35.6078)	3
<i>Conversions</i>	4
<i>Details</i>	6
<i>Harmonies</i>	12
<i>Previews</i>	24
<i>Color Blindness Simulation</i>	28
<i>CSS Examples</i>	31

Color

**XYZ(39.6365, 36.9136,
35.6078)**

Conversions

Conversions Part 1

Format	Color
Hex	C29A9A
RGB	194, 154, 154
RGB Percent	76%, 60%, 60%
CMY	0.2392, 0.3961, 0.3961
CMYK	0.00, 0.21, 0.21, 0.24
HSL	0°, 25%, 68%
HSV	0°, 21%, 76%
XYZ	39.6365, 36.9136, 35.6078
YIQ	165.9600, 23.8400, 8.4800

Conversions

Conversions Part 2

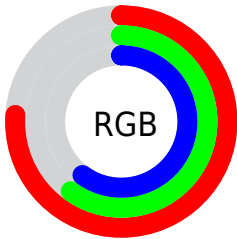
Format	Color
RYB	194, 154, 154
Decimal	12753562
CIELab	67.21, 14.88, 5.68
CIELCh	67, 15.929, 20.879
Yxy	36.9136, 0.3534, 0.3291
Android (android.graphics.Color)	4290943642 (0xFFC29A9A)
YUV	165.9600, -5.8963, 24.5911
Hunter-Lab	60.7566, 10.1262, 7.7813

Details

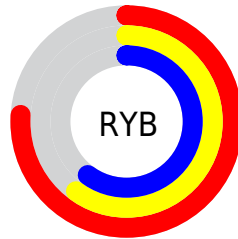
The XYZ color **39.6365, 36.9136, 35.6078** is a light color, and the websafe version is hex **CC9999**. A complement of this color would be **42.3555, 49.3475, 58.3320**, and the grayscale version is **36.2465, 38.1342, 41.5281**.

A 20% lighter version of the original color is **73.9693, 70.6642, 69.4155**, and **18.1136, 16.2552, 15.0148** is the 20% darker color. If you saturate the color by 10%, you get **35.2026, 30.4258, 26.7920**, and if you desaturate by 10%, it is **44.8510, 44.5440, 45.9730**.

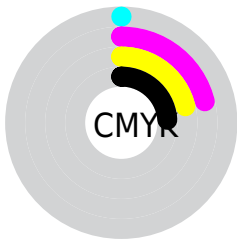
Distribution



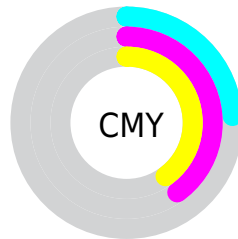
- Red (76%)
- Green (60%)
- Blue (60%)



- Red (76%)
- Yellow (60%)
- Blue (60%)



- Cyan (0%)
- Magenta (21%)
- Yellow (21%)
- Black (24%)



- Cyan (24%)
- Magenta (40%)
- Yellow (40%)

Brightness & Saturation Gradients


These gradients show how the XYZ color 39.6365, 36.9136, 35.6078 changes by changing the brightness by 10 percent. The first figure shows a shift by +10% for each color and the second figure -10%.


Similar to the brightness gradients but the following saturation gradients show a change of the XYZ color 39.6365, 36.9136, 35.6078 by changing the saturation by 10% instead.


 39.6365, 36.9136,
35.6078


 39.6365, 36.9136,
35.6078

335.7498,
332.9363, 342.2285

 27.4382, 25.1406,
23.8442


 73.8975, 70.4399,
69.5885

 18.0409, 16.1818,
15.0069

 96.6910, 92.9620,
92.6426

 11.0792, 9.6529,
8.6776


123.7468,
119.8358, 120.2973

 6.1878, 5.1694,
4.4375

155.4305,
151.4459, 152.9712

 3.0014, 2.3470,
1.8683

192.1072,
188.1766, 191.0827

 1.1545, 0.7984,
0.4725

234.1425,

 0.0700, 0.0000,

230.4123, 235.0503

0.0000

281.9016,
278.5374, 285.2928

■ 0.0000, 0.0000,
0.0000

■ 39.6365, 36.9136,
35.6078

■ 39.6365, 36.9136,
35.6078

■ 35.2026, 30.4258,
26.7920

■ 44.8510, 44.5440,
45.9730

■ 31.5089, 25.0208,
19.4491

■ 50.8779, 53.3630,
57.9544

■ 28.5160, 20.6413,
13.4995

■ 57.7508, 63.4199,
71.6181

■ 26.1797, 17.2225,
8.8552

■ 65.5008, 74.7602,
87.0253

■ 24.4506, 14.6924,
5.4182

■ 74.1572, 87.4267,
104.2345

■ 23.2726, 12.9685,
3.0767

■ 76.0583, 90.2094,
108.0112

■ 22.5790, 11.9534,
1.6981

■ 22.2485, 11.4698,
1.0413

Harmonies

Analogous

The Analogous color harmony consists of three colors that are next to each other on the color wheel.



39.9059, 36.9136, 42.3524



39.6365, 36.9136, 35.6078



38.1181, 36.9136, 30.6755

Triad

The Triadic color harmony groups three colors that are evenly spaced from another and form a triangle on the color wheel.



39.6365, 36.9136, 35.6078



31.5823, 36.9136, 32.3237



34.3495, 36.9136, 54.9125

Complementary

The Complementary color scheme is a pair of colors which are on the opposite of each other on the color wheel.



39.6365, 36.9136, 35.6078



42.3555, 49.3475, 58.3320

Split Complementary

Split-complementary colors differ from the complementary color scheme. The scheme consists of three colors, the original color and two neighbors of the complement color.



32.2177, 36.9136, 51.4989



39.6365, 36.9136, 35.6078



30.6694, 36.9136, 38.1076

Square

The Square scheme is like the rectangle color scheme, but the four colors are evenly spaced on the color wheel.



39.6365, 36.9136, 35.6078



33.4456, 36.9136, 28.9371



30.8965, 36.9136, 45.1550



36.7777, 36.9136, 54.0432

Rectangle

The Rectangle color scheme consists of four colors that form a rectangle on the color wheel.



39.6365, 36.9136, 35.6078



36.6388, 36.9136, 28.8244



30.8965, 36.9136, 45.1550



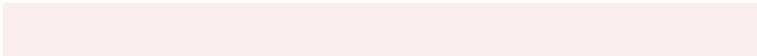
33.5762, 36.9136, 54.2145

Sweetspot

The Sweet Spot groups the original color and five complimentary colors.



39.6375, 36.9153, 35.6086



86.0108, 87.6565, 92.7392



43.5418, 38.4761, 56.1711



18.6778, 18.9651, 19.9954



0.0000, 0.0000, 0.0000



20.3446, 21.4041, 23.3091

Same Dimension

The Same Dimension uses a secret algorithm to generate beautiful new colors.



39.6375, 36.9153, 35.6086



67.8015, 61.0113, 56.5393



43.2174, 44.0750, 36.8019



10.0733, 10.0780, 10.4762



14.6277, 7.5411, 0.6846



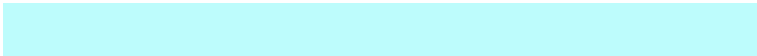
0.6320, 0.3259, 0.0296

Inverse Universe

The Inverse Universe completely reimagines the original color for something new.



42.3555, 49.3475, 58.3320



73.6623, 87.8192, 105.5382



38.2005, 41.0377, 56.9470



10.3685, 11.4283, 12.9442



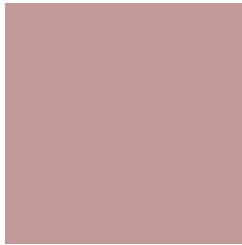
19.0835, 27.9235, 37.9406



0.8246, 1.2065, 1.6393

Previews

White Background



This preview shows how the XYZ color 39.6365, 36.9136, 35.6078 looks on a white background.

Color Contrast Check

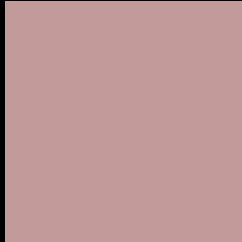
Large Text (above 18pt) WCAG AA × Fail

Any Text WCAG AA × Fail

Large Text (above 18pt) WCAG AAA × Fail

Any Text WCAG AAA × Fail

Black Background



This preview shows how the XYZ color 39.6365, 36.9136, 35.6078 looks on a black background.

Color Contrast Check

Large Text (above 18pt) WCAG AA ✓ Pass

Any Text WCAG AA ✓ Pass

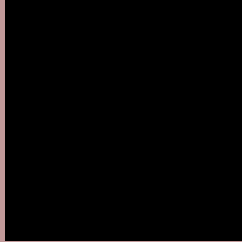
Large Text (above 18pt) WCAG AAA ✓ Pass

Any Text WCAG AAA ✓ Pass

If you want to check with other color combinations, try the [Color Contrast Checker](#).

XYZ 39.6365, 36.9136, 35.6078

Background



This preview shows how black text looks on a background with the XYZ color 39.6365, 36.9136, 35.6078.



This preview shows how white text looks on a background with the XYZ color 39.6365, 36.9136,

35.6078.

Color Blindness Simulation

Color vision deficiency is a very complex topic, and I could not describe the different causes any better than Wikipedia does, so if you want to learn more, you should check out their [article about color blindness](#).

Dichromacy



Original Color

39.6365, 36.9136, 35.6078

Protanopia

35.5037, 37.0224, 38.0757

Deuteranopia

37.7438, 36.9440, 35.2786



Tritanopia

40.4348, 36.7389, 40.0821

Trichromacy



Original Color

39.6365, 36.9136, 35.6078

Protanomaly

36.7881, 36.9230, 37.0862

Deuteranomaly

38.5458, 37.1052, 35.2674

Tritanomaly

40.2421, 36.9226, 38.2635

Monochromacy



Original Color

39.6365, 36.9136, 35.6078

Achromatopsia

36.2450, 38.1326, 41.5264

Achromatomaly

37.3464, 37.6794, 39.4869

CSS Examples

Text

The CSS property to change the color of the text to XYZ 39.6365, 36.9136, 35.6078 is called "color". The color property can be set on classes, ids or directly on the HTML element.

This example shows how text in the color `rgb(194, 154, 154)` looks like.

```
.text, #text, p{  
    color:rgb(194, 154, 154)  
}
```

If you want to add a text shadow in that color use the text-shadow property, you can generate a text shadow directly with our [CSS Text Shadow Generator](#).

Here you see how black text with a 4 pixel rgb(194, 154, 154) colored shadow looks like.

```
.shadow{ text-shadow: 4px 4px 2px rgb(194, 154, 154) }
```

Border

The CSS property to change the border of an element to XYZ 39.6365, 36.9136, 35.6078 is called "border". The border property can be set on classes, ids or directly on the HTML element.

This example shows the color as border, it can be applied via the CSS property "border" or "border-color".

```
.border, #border, table{ border:4px solid rgb(194, 154, 154) }
```


If only the border color should be changed use the property `border-color`.

```
.border{ border-color:rgb(194, 154, 154) }
```

If you want to add a box shadow in that color use:

Here you see how a box with a 4 pixel `rgb(194, 154, 154)` colored shadow looks like.

```
.boxshadow{ -moz-box-shadow:4px 4px 4px  
4px rgb(194, 154, 154); -webkit-box-  
shadow:4px 4px 4px 4px rgb(194, 154, 154);  
box-shadow:4px 4px 4px 4px rgb(194, 154,  
154) }
```

Background

The CSS property to change the background color of an element to XYZ 39.6365, 36.9136, 35.6078 is called "background". The background property can be set on classes, ids or directly on the HTML element.

```
.background, #background, body{  
background: rgb(194, 154, 154) }
```

If only the background color should be changed can be used:

```
.background{ background-color: rgb(194,  
154, 154) }
```

This example shows the color as background, it is applied via the CSS property "background".

To optimize and compress your CSS code, you can use our [online CSS compressor and optimizer](#) based on csstidy. If you want to create a linear or radial gradient as background or border, check our [CSS Gradient Generator](#).

Hey! You found this booklet interesting? Support Converting Colors with the new Membership Option!

The pro membership hides all ads, plus gives you double the colors in the color bucket, and more awesome pro features!

[Learn more, Memberships starting at \\$2.50/m!](#)

**Follow me
on Twitter!**

@ConvertingColor