

# Converting Colors

XYZ(39.5775, 37.5889, 33.4436)

Have a look what the booklet for  
XYZ(39.5775, 37.5889, 33.4436)  
contains.

<b>XYZ(39.7299, 37.7532, 33.6269)</b> .....	3
<b><i>Conversions</i></b> .....	4
<b><i>Details</i></b> .....	6
<b><i>Harmonies</i></b> .....	12
<b><i>Previews</i></b> .....	24
<b><i>Color Blindness Simulation</i></b> .....	28
<b><i>CSS Examples</i></b> .....	31

# Color

**XYZ(39.7299, 37.7532,  
33.6269)**

# Conversions

## Conversions Part 1

<b>Format</b>	<b>Color</b>
Hex	C29D95
RGB	194, 157, 149
RGB Percent	76%, 62%, 58%
CMY	0.2392, 0.3843, 0.4157
CMYK	0.00, 0.19, 0.23, 0.24
HSL	11°, 27%, 67%
HSV	11°, 23%, 76%
XYZ	39.7299, 37.7532, 33.6269
YIQ	167.1510, 24.6200, 5.3560

# Conversions

## Conversions Part 2

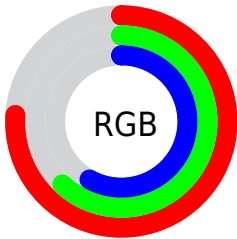
Format	Color
<a href="#">RYB</a>	<a href="#">194, 159, 149</a>
Decimal	<a href="#">12754325</a>
CIELab	<a href="#">67.84, 12.48, 9.36</a>
CIELCh	<a href="#">68, 15.598, 36.878</a>
Yxy	<a href="#">37.7532, 0.3576, 0.3398</a>
Android (android.graphics.Color)	<a href="#">4290944405</a> ( <a href="#">0xFFC29D95</a> )
YUV	<a href="#">167.1510, -8.9484, 23.5466</a>
Hunter-Lab	<a href="#">61.4436, 7.8930, 10.5623</a>

# Details

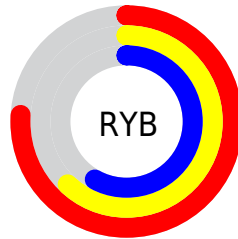
The XYZ color **39.7299, 37.7532, 33.6269** is a light color, and the websafe version is hex **CC9999**. A complement of this color would be **39.6905, 45.4011, 57.7105**, and the grayscale version is **36.8389, 38.7573, 42.2067**.

A 20% lighter version of the original color is **74.1066, 71.9080, 66.4737**, and **18.1739, 16.7654, 13.8334** is the 20% darker color. If you saturate the color by 10%, you get **35.7838, 32.1365, 25.2960**, and if you desaturate by 10%, it is **44.2884, 44.1812, 43.4357**.

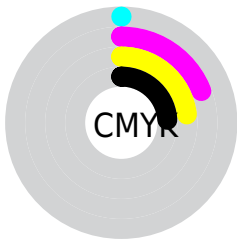
# Distribution



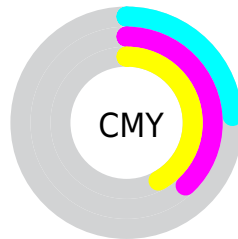
- Red (76%)
- Green (62%)
- Blue (58%)



- Red (76%)
- Yellow (62%)
- Blue (58%)



- Cyan (0%)
- Magenta (19%)
- Yellow (23%)
- Black (24%)




- Cyan (24%)
- Magenta (38%)
- Yellow (42%)


# Brightness & Saturation Gradients

These gradients show how the XYZ color 39.7299, 37.7532, 33.6269 changes by changing the brightness by 10 percent. The first figure shows a shift by +10% for each color and the second figure -10%.


Similar to the brightness gradients but the following saturation gradients show a change of the XYZ color 39.7299, 37.7532, 33.6269 by changing the saturation by 10% instead.





 39.7299, 37.7532,  
33.6269


 39.7299, 37.7532,  
33.6269


336.1378,  
336.5601, 333.1834

 27.5113, 25.7912,  
22.3321


 74.0390, 71.7297,  
66.4803

 18.0962, 16.6675,  
13.9005


 96.8602, 94.5130,  
88.8760

 11.1191, 9.9977,  
7.9135


123.9463,  
121.6722, 115.8090

 6.2149, 5.3974,  
3.9527

155.6627,  
153.5916, 147.6979

 3.0181, 2.4823,  
1.5994

192.3746,  
190.6557, 184.9613

 1.1633, 0.8678,  
0.2904

234.4476,

 0.0771, 0.0000,

233.2489, 228.0176

0.0000

282.2468,  
281.7556, 277.2855

0.0000, 0.0000,  
0.0000

39.7299, 37.7532,  
33.6269

39.7299, 37.7532,  
33.6269

35.7838, 32.1365,  
25.2960

44.2884, 44.1812,  
43.4357

32.4207, 27.2936,  
18.3688

49.4808, 51.4455,  
54.7868

29.6133, 23.1919,  
12.7683

55.3316, 59.5767,  
67.7438

27.3310, 19.7945,  
8.4092

61.8628, 68.6023,  
82.3660

25.5400, 17.0612,  
5.1960

69.0955, 78.5484,  
98.7095

■ 24.2024, 14.9474,  
3.0193

■ 75.3294, 88.7518,  
107.7683

■ 23.2743, 13.4032,  
1.7480

■ 76.0582, 90.2094,  
108.0112

■ 22.8348, 12.6425,  
1.2367

# Harmonies

## Analogous

The Analogous color harmony consists of three colors that are next to each other on the color wheel.



40.6969, 37.7532, 39.5337



39.7299, 37.7532, 33.6269



37.7390, 37.7532, 30.0428

# Triad

The Triadic color harmony groups three colors that are evenly spaced from another and form a triangle on the color wheel.



39.7299, 37.7532, 33.6269



31.7774, 37.7532, 36.0995



36.4426, 37.7532, 55.7842

# Complementary

The Complementary color scheme is a pair of colors which are on the opposite of each other on the color wheel.



39.7299, 37.7532, 33.6269



39.6905, 45.4011, 57.7105

# Split Complementary

Split-complementary colors differ from the complementary color scheme. The scheme consists of three colors, the original color and two neighbors of the complement color.



34.0894, 37.7532, 54.5998



39.7299, 37.7532, 33.6269



31.4651, 37.7532, 42.7212

# Square

The Square scheme is like the rectangle color scheme, but the four colors are evenly spaced on the color wheel.



39.7299, 37.7532, 33.6269



33.1664, 37.7532, 31.3545



32.2933, 37.7532, 49.6210



38.7446, 37.7532, 52.6967



# Rectangle

The Rectangle color scheme consists of four colors that form a rectangle on the color wheel.



39.7299, 37.7532, 33.6269



36.1369, 37.7532, 29.1996



32.2933, 37.7532, 49.6210



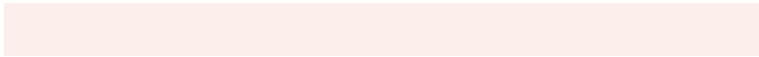
35.6308, 37.7532, 55.8775

# Sweetspot

The Sweet Spot groups the original color and five complimentary colors.



39.7309, 37.7549, 33.6277



85.8232, 87.8683, 90.8665



41.9121, 36.5312, 51.5760



18.6660, 19.0628, 19.6179



0.0000, 0.0000, 0.0000



20.3446, 21.4041, 23.3091



# Same Dimension

The Same Dimension uses a secret algorithm to generate beautiful new colors.



39.7309, 37.7549, 33.6277



68.0939, 62.8807, 52.6764



43.7933, 45.8798, 34.9818



10.2149, 10.3611, 10.5234



15.0565, 8.3987, 0.8276



0.6960, 0.4538, 0.0509

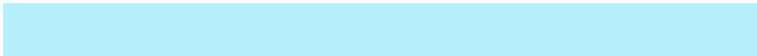


# Inverse Universe

The Inverse Universe completely reimagines the original color for something new.



39.6905, 45.4011, 57.7105



68.0019, 79.2214, 104.1770



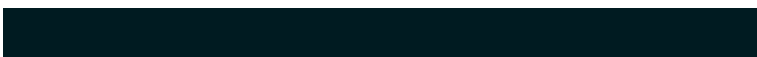
35.4079, 36.8360, 56.2830



10.2113, 11.1138, 12.8918



14.6638, 19.0842, 36.4674

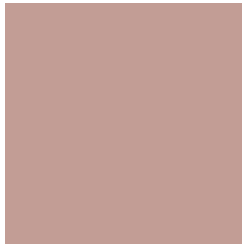


0.6744, 0.9062, 1.5893



# Previews

## White Background



This preview shows how the XYZ color 39.7299, 37.7532, 33.6269 looks on a white background.

## Color Contrast Check

Large Text (above 18pt) WCAG AA × Fail

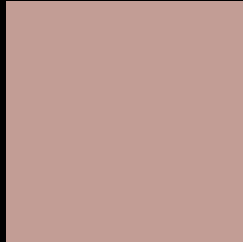
Any Text WCAG AA × Fail

Large Text (above 18pt) WCAG AAA × Fail

Any Text WCAG AAA × Fail



# Black Background



This preview shows how the XYZ color 39.7299, 37.7532, 33.6269 looks on a black background.

## Color Contrast Check

Large Text (above 18pt) WCAG AA ✓ Pass

Any Text WCAG AA ✓ Pass

Large Text (above 18pt) WCAG AAA ✓ Pass

Any Text WCAG AAA ✓ Pass

If you want to check with other color combinations, try the [Color Contrast Checker](#).

**XYZ 39.7299, 37.7532, 33.6269**

## **Background**



This preview shows how black text looks on a background with the XYZ color 39.7299, 37.7532, 33.6269.



This preview shows how white text looks on a background with the XYZ color 39.7299, 37.7532,



# Color Blindness Simulation

Color vision deficiency is a very complex topic, and I could not describe the different causes any better than Wikipedia does, so if you want to learn more, you should check out their [article about color blindness](#).

## Dichromacy



### Original Color

39.7299, 37.7532, 33.6269

### Protanopia

35.9995, 37.8681, 35.5489

### Deuteranopia

38.7347, 38.0029, 33.7275



## Tritanopia

41.2035, 37.6001, 41.1623

# Trichromacy



## Original Color

39.7299, 37.7532, 33.6269

## Protanomaly

37.1782, 37.6914, 35.0214

## Deuteranomaly

39.0582, 37.9133, 33.6932

## Tritanomaly

40.5722, 37.5829, 38.3735

# Monochromacy



## Original Color

39.7299, 37.7532, 33.6269

## Achromatopsia

36.7301, 38.6429, 42.0822

## Achromatomaly

37.5738, 38.0796, 38.6274

# CSS Examples

## Text

The CSS property to change the color of the text to XYZ 39.7299, 37.7532, 33.6269 is called "color". The color property can be set on classes, ids or directly on the HTML element.

This example shows how text in the color `rgb(194, 157, 149)` looks like.

```
.text, #text, p{  
    color:rgb(194, 157, 149)  
}
```

If you want to add a text shadow in that color use the text-shadow property, you can generate a text shadow directly with our [CSS Text Shadow Generator](#).

Here you see how black text with a 4 pixel rgb(194, 157, 149) colored shadow looks like.

```
.shadow{ text-shadow: 4px 4px 2px rgb(194, 157, 149) }
```

## Border

The CSS property to change the border of an element to XYZ 39.7299, 37.7532, 33.6269 is called "border". The border property can be set on classes, ids or directly on the HTML element.

This example shows the color as border, it can be applied via the CSS property "border" or "border-color".

```
.border, #border, table{ border:4px solid rgb(194, 157, 149) }
```



If only the border color should be changed use the property `border-color`.

```
.border{ border-color:rgb(194, 157, 149) }
```

If you want to add a box shadow in that color use:

Here you see how a box with a 4 pixel `rgb(194, 157, 149)` colored shadow looks like.

```
.boxshadow{ -moz-box-shadow:4px 4px 4px  
4px rgb(194, 157, 149); -webkit-box-  
shadow:4px 4px 4px 4px rgb(194, 157, 149);  
box-shadow:4px 4px 4px 4px rgb(194, 157,  
149) }
```

# Background

The CSS property to change the background color of an element to XYZ 39.7299, 37.7532, 33.6269 is called "background". The background property can be set on classes, ids or directly on the HTML element.

```
.background, #background, body{  
background: rgb(194, 157, 149) }
```

If only the background color should be changed can be used:

```
.background{ background-color: rgb(194,  
157, 149) }
```

This example shows the color as background, it is applied via the CSS property "background".

To optimize and compress your CSS code, you can use our [online CSS compressor and optimizer](#) based on csstidy. If you want to create a linear or radial gradient as background or border, check our [CSS Gradient Generator](#).

Hey! You found this booklet interesting? Support Converting Colors with the new Membership Option!

The pro membership hides all ads, plus gives you double the colors in the color bucket, and more awesome pro features!

**[Learn more, Memberships starting at \\$2.50/m!](#)**

**Follow me  
on Twitter!**

@ConvertingColor