

Converting Colors

XYZ(39.6829, 35.4890, 31.7172)

Have a look what the booklet for
XYZ(39.6829, 35.4890, 31.7172)
contains.

XYZ(39.7881, 35.6417, 31.5705)	3
<i>Conversions</i>	4
<i>Details</i>	6
<i>Harmonies</i>	12
<i>Previews</i>	24
<i>Color Blindness Simulation</i>	28
<i>CSS Examples</i>	31

Color

**XYZ(39.7881, 35.6417,
31.5705)**

Conversions

Conversions Part 1

Format	Color
Hex	C99491
RGB	201, 148, 145
RGB Percent	79%, 58%, 57%
CMY	0.2118, 0.4196, 0.4314
CMYK	0.00, 0.26, 0.28, 0.21
HSL	3°, 34%, 68%
HSV	3°, 28%, 79%
XYZ	39.7881, 35.6417, 31.5705
YIQ	163.5050, 32.5510, 10.3030

Conversions

Conversions Part 2

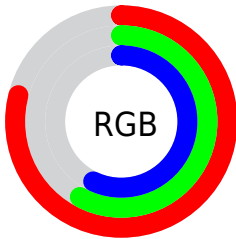
Format	Color
R_{YB}	201, 148, 145
Decimal	13210769
CIE _{Lab}	66.25, 19.53, 9.43
CIE _{LCh}	66, 21.683, 25.773
Yxy	35.6417, 0.3719, 0.3331
Android (android.graphics.Color)	4291400849 (0xFFC99491)
YUV	163.5050, -9.1230, 32.8831
Hunter-Lab	59.7007, 14.4869, 10.4371

Details

The XYZ color **39.7881, 35.6417, 31.5705** is a light color, and the websafe version is hex **CC9999**. A complement of this color would be **42.4129, 50.6231, 62.7942**, and the grayscale version is **35.0835, 36.9106, 40.1956**.

A 20% lighter version of the original color is **72.6693, 67.6246, 63.2556**, and **18.1943, 15.4866, 12.8567** is the 20% darker color. If you saturate the color by 10%, you get **35.6309, 29.5919, 23.2028**, and if you desaturate by 10%, it is **44.7118, 42.7851, 41.5473**.

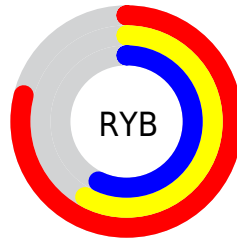
Distribution



Red (79%)

Green (58%)

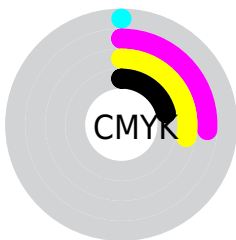
Blue (57%)



Red (79%)

Yellow (58%)

Blue (57%)

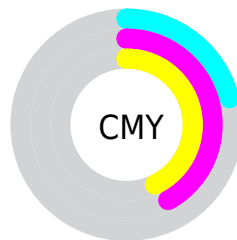


Cyan (0%)

Magenta (26%)

Yellow (28%)

Black (21%)



Cyan (21%)


Magenta (42%)


Yellow (43%)

Brightness & Saturation Gradients

These gradients show how the XYZ color 39.7881, 35.6417, 31.5705 changes by changing the brightness by 10 percent. The first figure shows a shift by +10% for each color and the second figure -10%.


Similar to the brightness gradients but the following saturation gradients show a change of the XYZ color 39.7881, 35.6417, 31.5705 by changing the saturation by 10% instead.


 39.7881, 35.6417,
31.5705


 39.7881, 35.6417,
31.5705


336.3794,
327.3918, 323.5903

 27.5568, 24.1576,
20.7716


 74.1271, 68.4787,
63.2272

 18.1306, 15.4506,
12.7675


 96.9656, 90.6004,
84.9221

 11.1441, 9.1362,
7.1398


124.0705,
117.0367, 111.0860

 6.2318, 4.8301,
3.4699

155.8073,
148.1720, 142.1375

 3.0285, 2.1479,
1.3393

192.5412,
184.3908, 178.4951

 1.1689, 0.6914,
0.0937

234.6376,

 0.0816, 0.0000,

226.0774, 220.5775

0.0000

282.4619,
273.6163, 268.8030

0.0000, 0.0000,
0.0000

39.7881, 35.6417,
31.5705

39.7881, 35.6417,
31.5705

35.6309, 29.5919,
23.2028

44.7118, 42.7851,
41.5473

32.1988, 24.5770,
16.3578

50.4347, 51.0671,
53.2090

29.4512, 20.5406,
10.9447

56.9914, 60.5361,
66.6292

27.3421, 17.4188,
6.8617

64.4131, 71.2364,
81.8764

25.8199, 15.1400,
3.9940

72.7300, 83.2099,
99.0156

■ 24.8249, 13.6221,
2.2071

■ 77.8974, 91.1575,
108.0973

■ 24.2797, 12.7645,
1.3076

■ 24.2046, 12.6519,
1.1663

Harmonies

Analogous

The Analogous color harmony consists of three colors that are next to each other on the color wheel.



40.4614, 35.6417, 40.1349



39.7881, 35.6417, 31.5705



37.4945, 35.6417, 25.8710

Triad

The Triadic color harmony groups three colors that are evenly spaced from another and form a triangle on the color wheel.



39.7881, 35.6417, 31.5705



28.9924, 35.6417, 29.6308



33.4202, 35.6417, 59.4067

Complementary

The Complementary color scheme is a pair of colors which are on the opposite of each other on the color wheel.



39.7881, 35.6417, 31.5705



42.4129, 50.6231, 62.7942

Split Complementary

Split-complementary colors differ from the complementary color scheme. The scheme consists of three colors, the original color and two neighbors of the complement color.



30.4989, 35.6417, 55.4663



39.7881, 35.6417, 31.5705



28.0476, 35.6417, 37.5102

Square

The Square scheme is like the rectangle color scheme, but the four colors are evenly spaced on the color wheel.



39.7881, 35.6417, 31.5705



31.2449, 35.6417, 24.8824



28.5813, 35.6417, 47.0743



36.6516, 35.6417, 57.1482

Rectangle

The Rectangle color scheme consists of four colors that form a rectangle on the color wheel.



39.7881, 35.6417, 31.5705



35.4272, 35.6417, 23.9828



28.5813, 35.6417, 47.0743



32.3715, 35.6417, 58.7482

Sweetspot

The Sweet Spot groups the original color and five complimentary colors.



39.7891, 35.6434, 31.5712



86.0852, 87.0502, 90.5598



44.4291, 36.7551, 58.2999



18.0875, 18.1433, 18.6930



0.0000, 0.0000, 0.0000



20.3446, 21.4041, 23.3091

Same Dimension

The Same Dimension uses a secret algorithm to generate beautiful new colors.



39.7891, 35.6434, 31.5712



63.9774, 54.9967, 45.6966



44.6845, 45.4343, 33.2031



10.6788, 10.7267, 11.0704



15.2403, 7.9977, 0.7405



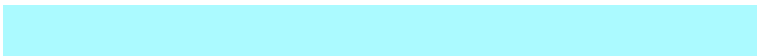
0.7379, 0.4113, 0.0405

Inverse Universe

The Inverse Universe completely reimagines the original color for something new.



42.4129, 50.6231, 62.7942



69.1485, 84.5343, 107.2800



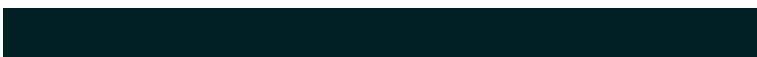
36.6322, 39.0616, 60.8673



10.8961, 11.9663, 13.6529



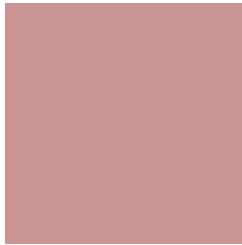
18.2579, 25.9097, 38.7831



0.8798, 1.2573, 1.8415

Previews

White Background



This preview shows how the XYZ color 39.7881, 35.6417, 31.5705 looks on a white background.

Color Contrast Check

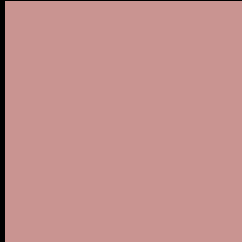
Large Text (above 18pt) WCAG AA × Fail

Any Text WCAG AA × Fail

Large Text (above 18pt) WCAG AAA × Fail

Any Text WCAG AAA × Fail

Black Background



This preview shows how the XYZ color 39.7881, 35.6417, 31.5705 looks on a black background.

Color Contrast Check

Large Text (above 18pt) WCAG AA ✓ Pass

Any Text WCAG AA ✓ Pass

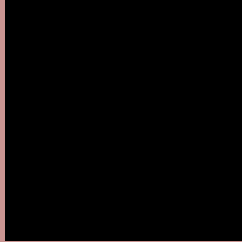
Large Text (above 18pt) WCAG AAA ✓ Pass

Any Text WCAG AAA ✓ Pass

If you want to check with other color combinations, try the [Color Contrast Checker](#).

XYZ 39.7881, 35.6417, 31.5705

Background



This preview shows how black text looks on a background with the XYZ color 39.7881, 35.6417, 31.5705.



This preview shows how white text looks on a background with the XYZ color 39.7881, 35.6417,

Color Blindness Simulation

Color vision deficiency is a very complex topic, and I could not describe the different causes any better than Wikipedia does, so if you want to learn more, you should check out their [article about color blindness](#).

Dichromacy



Original Color

39.7881, 35.6417, 31.5705

Protanopia

34.1383, 35.8637, 34.8289

Deuteranopia

36.2838, 35.5236, 31.3299



Tritanopia

40.7218, 35.5486, 36.6136

Trichromacy



Original Color

39.7881, 35.6417, 31.5705

Protanomaly

35.9037, 35.5306, 33.3995

Deuteranomaly

37.4975, 35.4172, 31.2454

Tritanomaly

40.5406, 35.7239, 34.8957

Monochromacy



Original Color

39.7881, 35.6417, 31.5705

Achromatopsia

35.2861, 37.1238, 40.4278

Achromatomaly

36.4441, 36.2352, 36.9716

CSS Examples

Text

The CSS property to change the color of the text to XYZ 39.7881, 35.6417, 31.5705 is called "color". The color property can be set on classes, ids or directly on the HTML element.

This example shows how text in the color `rgb(201, 148, 145)` looks like.

```
.text, #text, p{  
    color:rgb(201, 148, 145)  
}
```

If you want to add a text shadow in that color use the text-shadow property, you can generate a text shadow directly with our [CSS Text Shadow Generator](#).

Here you see how black text with a 4 pixel rgb(201, 148, 145) colored shadow looks like.

```
.shadow{ text-shadow: 4px 4px 2px rgb(201, 148, 145) }
```

Border

The CSS property to change the border of an element to XYZ 39.7881, 35.6417, 31.5705 is called "border". The border property can be set on classes, ids or directly on the HTML element.

This example shows the color as border, it can be applied via the CSS property "border" or "border-color".

```
.border, #border, table{ border:4px solid rgb(201, 148, 145) }
```


If only the border color should be changed use the property `border-color`.

```
.border{ border-color:rgb(201, 148, 145) }
```

If you want to add a box shadow in that color use:

Here you see how a box with a 4 pixel `rgb(201, 148, 145)` colored shadow looks like.

```
.boxshadow{ -moz-box-shadow:4px 4px 4px  
4px rgb(201, 148, 145); -webkit-box-  
shadow:4px 4px 4px 4px rgb(201, 148, 145);  
box-shadow:4px 4px 4px 4px rgb(201, 148,  
145) }
```

Background

The CSS property to change the background color of an element to XYZ 39.7881, 35.6417, 31.5705 is called "background". The background property can be set on classes, ids or directly on the HTML element.

```
.background, #background, body{  
background: rgb(201, 148, 145) }
```

If only the background color should be changed can be used:

```
.background{ background-color: rgb(201,  
148, 145) }
```

This example shows the color as background, it is applied via the CSS property "background".

To optimize and compress your CSS code, you can use our [online CSS compressor and optimizer](#) based on csstidy. If you want to create a linear or radial gradient as background or border, check our [CSS Gradient Generator](#).

Hey! You found this booklet interesting? Support Converting Colors with the new Membership Option!

The pro membership hides all ads, plus gives you double the colors in the color bucket, and more awesome pro features!

[Learn more, Memberships starting at \\$2.50/m!](#)

**Follow me
on Twitter!**

@ConvertingColor