

Converting Colors

XYZ(39.6949, 37.5078, 30.3417)

Have a look what the booklet for
XYZ(39.6949, 37.5078, 30.3417)
contains.

XYZ(39.7221, 37.5703, 30.3575)	3
<i>Conversions</i>	4
<i>Details</i>	6
<i>Harmonies</i>	12
<i>Previews</i>	24
<i>Color Blindness Simulation</i>	28
<i>CSS Examples</i>	31

Color

**XYZ(39.7221, 37.5703,
30.3575)**

Conversions

Conversions Part 1

Format	Color
Hex	C59C8D
RGB	197, 156, 141
RGB Percent	77%, 61%, 55%
CMY	0.2275, 0.3882, 0.4471
CMYK	0.00, 0.21, 0.28, 0.23
HSL	16°, 33%, 66%
HSV	16°, 28%, 77%
XYZ	39.7221, 37.5703, 30.3575
YIQ	166.5490, 29.2510, 4.0270

Conversions

Conversions Part 2

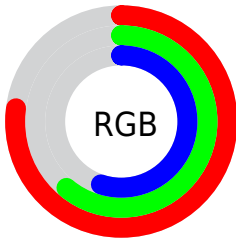
Format	Color
RYB	197, 161, 141
Decimal	12950669
CIELab	67.70, 13.04, 13.66
CIELCh	68, 18.882, 46.333
Yxy	37.5703, 0.3690, 0.3490
Android (android.graphics.Color)	4291140749 (0xFFC59C8D)
YUV	166.5490, -12.5957, 26.7055
Hunter-Lab	61.2946, 8.4117, 13.5416

Details

The XYZ color **39.7221, 37.5703, 30.3575** is a light color, and the websafe version is hex **CC9999**. A complement of this color would be **37.7900, 43.1485, 59.1601**, and the grayscale version is **36.5614, 38.4654, 41.8889**.

A 20% lighter version of the original color is **74.0176, 71.5995, 61.5487**, and **18.0952, 16.6093, 12.1497** is the 20% darker color. If you saturate the color by 10%, you get **36.1068, 32.4804, 22.5525**, and if you desaturate by 10%, it is **43.8875, 43.3427, 39.6331**.

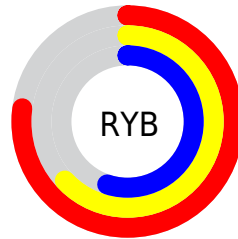
Distribution



Red (77%)

Green (61%)

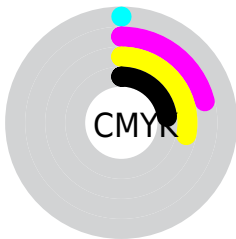
Blue (55%)



Red (77%)

Yellow (63%)

Blue (55%)

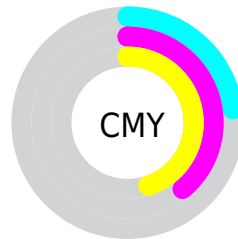


Cyan (0%)

Magenta (21%)

Yellow (28%)

Black (23%)



Cyan (23%)

Magenta (39%)

Yellow (45%)

Brightness & Saturation Gradients

These gradients show how the XYZ color 39.7221, 37.5703, 30.3575 changes by changing the brightness by 10 percent. The first figure shows a shift by +10% for each color and the second figure -10%.

Similar to the brightness gradients but the following saturation gradients show a change of the XYZ color 39.7221, 37.5703, 30.3575 by changing the saturation by 10% instead.

■ 39.7221, 37.5703,
30.3575

■ 39.7221, 37.5703,
30.3575

336.1054,
335.7731, 317.8263

■ 27.5052, 25.6494,
19.8557

■ 74.0272, 71.4490,
61.2948

■ 18.0915, 16.5615,
12.1072

■ 96.8461, 94.1756,
82.5673

■ 11.1158, 9.9224,
6.6933

■ 123.9296,
121.2729, 108.2673

■ 6.2127, 5.3475,
3.1955

155.6433,
153.1252, 138.8131

■ 3.0167, 2.4526,
1.1953

192.3523,
190.1170, 174.6234

■ 1.1626, 0.8527,
0.0000

234.4221,

■ 0.0765, 0.0000,

232.6326, 216.1167

0.0000

282.2180,
281.0565, 263.7115

■ 0.0000, 0.0000,
0.0000

■ 39.7221, 37.5703,
30.3575

■ 39.7221, 37.5703,
30.3575

■ 36.1068, 32.4804,
22.5525

■ 43.8875, 43.3427,
39.6331

■ 33.0147, 28.0422,
16.1395

■ 48.6225, 49.8166,
50.4475

■ 30.4213, 24.2302,
11.0365

■ 53.9488, 57.0166,
62.8675

■ 28.2985, 21.0153,
7.1513

■ 59.8867, 64.9646,
76.9553

■ 26.6152, 18.3656,
4.3799

■ 66.4549, 73.6816,
92.7696

■ 25.3361, 16.2462,
2.6007

■ 72.9878, 82.9140,
106.7649

■ 24.4117, 14.6145,
1.6233

■ 76.8360, 90.6103,
108.0476

■ 24.2892, 14.3967,
1.4987

Harmonies

Analogous

The Analogous color harmony consists of three colors that are next to each other on the color wheel.



41.3644, 37.5703, 36.5564



39.7221, 37.5703, 30.3575



37.0506, 37.5703, 27.2052

Triad

The Triadic color harmony groups three colors that are evenly spaced from another and form a triangle on the color wheel.



39.7221, 37.5703, 30.3575



30.5340, 37.5703, 37.2299



37.3094, 37.5703, 58.3318

Complementary

The Complementary color scheme is a pair of colors which are on the opposite of each other on the color wheel.



39.7221, 37.5703, 30.3575



37.7900, 43.1485, 59.1601

Split Complementary

Split-complementary colors differ from the complementary color scheme. The scheme consists of three colors, the original color and two neighbors of the complement color.



34.4011, 37.5703, 58.5771



39.7221, 37.5703, 30.3575



30.5949, 37.5703, 45.5912

Square

The Square scheme is like the rectangle color scheme, but the four colors are evenly spaced on the color wheel.



39.7221, 37.5703, 30.3575



31.8055, 37.5703, 30.7925



31.9766, 37.5703, 53.6563



39.9204, 37.5703, 53.0259

Rectangle

The Rectangle color scheme consists of four colors that form a rectangle on the color wheel.



39.7221, 37.5703, 30.3575



35.0946, 37.5703, 26.9344



31.9766, 37.5703, 53.6563



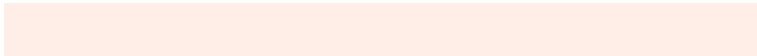
36.3314, 37.5703, 59.0314

Sweetspot

The Sweet Spot groups the original color and five complimentary colors.



39.7231, 37.5720, 30.3583



86.4451, 88.3540, 88.8791



41.0015, 34.3006, 48.7520



18.2230, 18.5304, 18.3796



0.0000, 0.0000, 0.0000



20.3446, 21.4041, 23.3091

Same Dimension

The Same Dimension uses a secret algorithm to generate beautiful new colors.



39.7231, 37.5720, 30.3583



67.0823, 61.5913, 45.5452



44.9605, 48.0469, 32.1041



10.8612, 11.0916, 11.1312



16.0358, 9.5887, 1.0056



0.8209, 0.5773, 0.0682

Inverse Universe

The Inverse Universe completely reimagines the original color for something new.



37.7900, 43.1485, 59.1601



63.0545, 73.1619, 105.4061



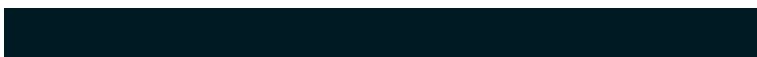
32.6295, 32.8276, 57.4400



10.6971, 11.5682, 13.5866



13.2822, 15.9583, 37.1246



0.6863, 0.8703, 1.7770

Previews

White Background



This preview shows how the XYZ color 39.7221, 37.5703, 30.3575 looks on a white background.

Color Contrast Check

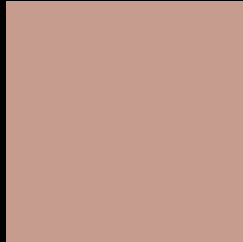
Large Text (above 18pt) WCAG AA × Fail

Any Text WCAG AA × Fail

Large Text (above 18pt) WCAG AAA × Fail

Any Text WCAG AAA × Fail

Black Background



This preview shows how the XYZ color 39.7221, 37.5703, 30.3575 looks on a black background.

Color Contrast Check

Large Text (above 18pt) WCAG AA ✓ Pass

Any Text WCAG AA ✓ Pass

Large Text (above 18pt) WCAG AAA ✓ Pass

Any Text WCAG AAA ✓ Pass

If you want to check with other color combinations, try the [Color Contrast Checker](#).

XYZ 39.7221, 37.5703, 30.3575

Background



This preview shows how black text looks on a background with the XYZ color 39.7221, 37.5703, 30.3575.



This preview shows how white text looks on a background with the XYZ color 39.7221, 37.5703,

30.3575.

Color Blindness Simulation

Color vision deficiency is a very complex topic, and I could not describe the different causes any better than Wikipedia does, so if you want to learn more, you should check out their [article about color blindness](#).

Dichromacy



Original Color

39.7221, 37.5703, 30.3575

Protanopia

35.7995, 37.8388, 32.2049

Deuteranopia

38.3670, 37.6369, 30.0534



Tritanopia

41.9115, 37.7422, 40.1979

Trichromacy



Original Color

39.7221, 37.5703, 30.3575

Protanomaly

37.2458, 37.7994, 31.7185

Deuteranomaly

38.9528, 37.6846, 30.0318

Tritanomaly

41.1095, 37.6536, 36.5537

Monochromacy



Original Color

39.7221, 37.5703, 30.3575

Achromatopsia

36.7301, 38.6429, 42.0822

Achromatomaly

37.6288, 38.1280, 37.7239

CSS Examples

Text

The CSS property to change the color of the text to XYZ 39.7221, 37.5703, 30.3575 is called "color". The color property can be set on classes, ids or directly on the HTML element.

This example shows how text in the color `rgb(197, 156, 141)` looks like.

```
.text, #text, p{  
    color:rgb(197, 156, 141)  
}
```

If you want to add a text shadow in that color use the text-shadow property, you can generate a text shadow directly with our [CSS Text Shadow Generator](#).

Here you see how black text with a 4 pixel rgb(197, 156, 141) colored shadow looks like.

```
.shadow{ text-shadow: 4px 4px 2px rgb(197, 156, 141) }
```

Border

The CSS property to change the border of an element to XYZ 39.7221, 37.5703, 30.3575 is called "border". The border property can be set on classes, ids or directly on the HTML element.

This example shows the color as border, it can be applied via the CSS property "border" or "border-color".

```
.border, #border, table{ border:4px solid rgb(197, 156, 141) }
```


If only the border color should be changed use the property border-color.

```
.border{ border-color:rgb(197, 156, 141) }
```

If you want to add a box shadow in that color use:

Here you see how a box with a 4 pixel rgb(197, 156, 141) colored shadow looks like.

```
.boxshadow{ -moz-box-shadow:4px 4px 4px  
4px rgb(197, 156, 141); -webkit-box-  
shadow:4px 4px 4px 4px rgb(197, 156, 141);  
box-shadow:4px 4px 4px 4px rgb(197, 156,  
141) }
```

Background

The CSS property to change the background color of an element to XYZ 39.7221, 37.5703, 30.3575 is called "background". The background property can be set on classes, ids or directly on the HTML element.

```
.background, #background, body{  
background: rgb(197, 156, 141) }
```

If only the background color should be changed can be used:

```
.background{ background-color: rgb(197,  
156, 141) }
```

This example shows the color as background, it is applied via the CSS property "background".

To optimize and compress your CSS code, you can use our [online CSS compressor and optimizer](#) based on csstidy. If you want to create a linear or radial gradient as background or border, check our [CSS Gradient Generator](#).

Hey! You found this booklet interesting? Support Converting Colors with the new Membership Option!

The pro membership hides all ads, plus gives you double the colors in the color bucket, and more awesome pro features!

[Learn more, Memberships starting at \\$2.50/m!](#)

**Follow me
on Twitter!**

@ConvertingColor