

# Converting Colors

XYZ(39.6975, 39.5192, 39.1796)

Have a look what the booklet for  
XYZ(39.6975, 39.5192, 39.1796)  
contains.

<b>XYZ(39.7161, 39.4384, 39.2373)</b> .....	3
<b><i>Conversions</i></b> .....	4
<b><i>Details</i></b> .....	6
<b><i>Harmonies</i></b> .....	12
<b><i>Previews</i></b> .....	24
<b><i>Color Blindness Simulation</i></b> .....	28
<b><i>CSS Examples</i></b> .....	31

# Color

**XYZ(39.7161, 39.4384,  
39.2373)**

# Conversions

## Conversions Part 1

Format	Color
Hex	B9A4A1
RGB	185, 164, 161
RGB Percent	73%, 64%, 63%
CMY	0.2745, 0.3568, 0.3686
CMYK	0.00, 0.11, 0.13, 0.27
HSL	8°, 15%, 68%
HSV	8°, 13%, 73%
XYZ	39.7161, 39.4384, 39.2373
YIQ	169.9370, 13.4790, 3.5190

# Conversions

## Conversions Part 2

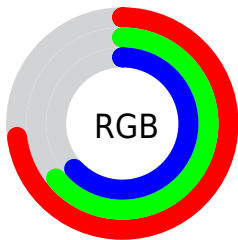
<b>Format</b>	<b>Color</b>
<a href="#">RYB</a>	<a href="#">185, 164, 161</a>
Decimal	<a href="#">12166305</a>
CIELab	<a href="#">69.07, 7.13, 4.34</a>
CIELCh	<a href="#">69, 8.354, 31.340</a>
Yxy	<a href="#">39.4384, 0.3355, 0.3331</a>
Android (android.graphics.Color)	<a href="#">4290356385</a> ( <a href="#">0xFFB9A4A1</a> )
YUV	<a href="#">169.9370, -4.4059, 13.2103</a>
Hunter-Lab	<a href="#">62.8000, 2.9873, 6.9157</a>

# Details

The XYZ color **39.7161, 39.4384, 39.2373** is a light color, and the websafe version is hex **999999**. A complement of this color would be **40.1827, 44.5350, 52.3777**, and the grayscale version is **38.1945, 40.1836, 43.7600**.

A 20% lighter version of the original color is **74.0018, 74.3217, 75.4109**, and **18.1244, 17.6197, 17.1975** is the 20% darker color. If you saturate the color by 10%, you get **35.4896, 33.4057, 30.3663**, and if you desaturate by 10%, it is **44.5548, 46.3085, 49.5042**.

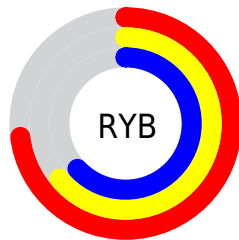
# Distribution



Red (73%)

Green (64%)

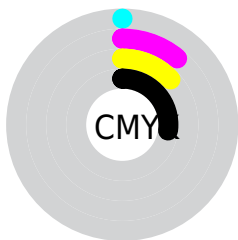
Blue (63%)



Red (73%)

Yellow (64%)

Blue (63%)

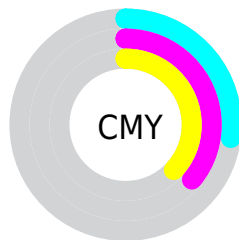


Cyan (0%)

Magenta (11%)

Yellow (13%)

Black (27%)



Cyan (27%)

Magenta (36%)


Yellow (37%)


# Brightness & Saturation Gradients

These gradients show how the XYZ color 39.7161, 39.4384, 39.2373 changes by changing the brightness by 10 percent. The first figure shows a shift by +10% for each color and the second figure -10%.


Similar to the brightness gradients but the following saturation gradients show a change of the XYZ color 39.7161, 39.4384, 39.2373 by changing the saturation by 10% instead.





 39.7161, 39.4384,  
39.2373


 39.7161, 39.4384,  
39.2373


336.0805,  
343.7508, 358.3544

 27.5005, 27.1009,  
26.6351


 74.0181, 74.3076,  
75.2250

 18.0880, 17.6490,  
17.0694


 96.8352, 97.6081,  
99.4477

 11.1132, 10.6983,  
10.1215


123.9168,  
125.3317, 128.3809

 6.2109, 5.8644,  
5.3729

155.6284,  
157.8629, 162.4432

 3.0156, 2.7628,  
2.4051

192.3351,  
195.5860, 202.0532

 1.1620, 1.0092,  
0.7892

234.4025,

 0.0761, 0.0000,

238.8854, 247.6293

0.0000

282.1958,  
288.1455, 299.5902

■ 0.0000, 0.0000,  
0.0000

■ 39.7161, 39.4384,  
39.2373

■ 39.7161, 39.4384,  
39.2373

■ 35.4896, 33.4057,  
30.3663

■ 44.5548, 46.3085,  
49.5042

■ 31.8477, 28.1732,  
22.8285

■ 50.0255, 54.0407,  
61.2212

■ 28.7655, 23.7088,  
16.5601

■ 56.1511, 62.6655,  
74.4423

■ 26.2151, 19.9764,  
11.4911

■ 62.9522, 72.2101,  
89.2184

■ 24.1659, 16.9365,  
7.5447

■ 70.4486, 82.7006,  
105.5978

■ 22.5844, 14.5464,  
4.6351

■ 73.8178, 89.0544,  
107.9064

■ 21.4329, 12.7583,  
2.6641

■ 20.6676, 11.5177,  
1.5146

■ 20.3172, 10.9332,  
1.0395

# Harmonies

## Analogous

The Analogous color harmony consists of three colors that are next to each other on the color wheel.



40.1051, 39.4384, 42.7703



39.7161, 39.4384, 39.2373



38.7273, 39.4384, 36.8196

# Triad

The Triadic color harmony groups three colors that are evenly spaced from another and form a triangle on the color wheel.



39.7161, 39.4384, 39.2373



35.2815, 39.4384, 39.5178



37.5450, 39.4384, 50.7028

# Complementary

The Complementary color scheme is a pair of colors which are on the opposite of each other on the color wheel.



39.7161, 39.4384, 39.2373



40.1827, 44.5350, 52.3777

# Split Complementary

Split-complementary colors differ from the complementary color scheme. The scheme consists of three colors, the original color and two neighbors of the complement color.



36.2696, 39.4384, 49.7074



39.7161, 39.4384, 39.2373



34.9816, 39.4384, 43.1135

# Square

The Square scheme is like the rectangle color scheme, but the four colors are evenly spaced on the color wheel.



39.7161, 39.4384, 39.2373



36.1682, 39.4384, 36.9747



35.3391, 39.4384, 46.8722



38.8334, 39.4384, 49.5184



# Rectangle

The Rectangle color scheme consists of four colors that form a rectangle on the color wheel.



39.7161, 39.4384, 39.2373



37.8721, 39.4384, 36.0886



35.3391, 39.4384, 46.8722



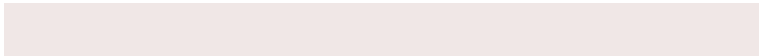
37.1006, 39.4384, 50.6117

# Sweetspot

The Sweet Spot groups the original color and five complimentary colors.



39.7172, 39.4402, 39.2381



78.7953, 81.5188, 86.5271



41.2172, 39.1903, 49.7571



16.8402, 17.3661, 18.3415



88.6918, 93.3107, 101.6153



17.8044, 18.7317, 20.3988



# Same Dimension

The Same Dimension uses a secret algorithm to generate beautiful new colors.



39.7172, 39.4402, 39.2381



68.5238, 66.9198, 64.7784



41.9273, 43.8604, 39.9748



9.0928, 9.1885, 9.4012



13.8642, 7.5047, 0.7178



0.5184, 0.3238, 0.0352



# Inverse Universe

The Inverse Universe completely reimagines the original color for something new.



40.1827, 44.5350, 52.3777



69.5446, 78.0991, 93.6139



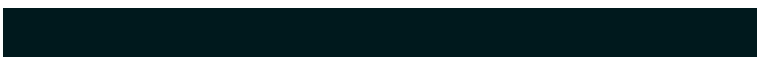
37.8677, 39.9049, 51.6061



9.1682, 10.0137, 11.5290



14.7789, 20.0174, 34.3379

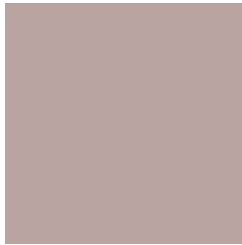


0.5481, 0.7598, 1.2195



# Previews

## White Background



This preview shows how the XYZ color 39.7161, 39.4384, 39.2373 looks on a white background.

## Color Contrast Check

Large Text (above 18pt) WCAG AA × Fail

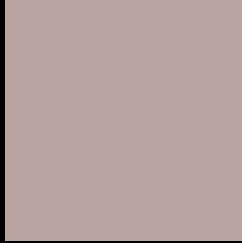
Any Text WCAG AA × Fail

Large Text (above 18pt) WCAG AAA × Fail

Any Text WCAG AAA × Fail



# Black Background



This preview shows how the XYZ color 39.7161, 39.4384, 39.2373 looks on a black background.

## Color Contrast Check

Large Text (above 18pt) WCAG AA ✓ Pass

Any Text WCAG AA ✓ Pass

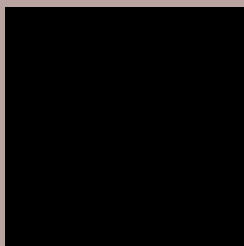
Large Text (above 18pt) WCAG AAA ✓ Pass

Any Text WCAG AAA ✓ Pass

If you want to check with other color combinations, try the [Color Contrast Checker](#).

**XYZ 39.7161, 39.4384, 39.2373**

## **Background**



This preview shows how black text looks on a background with the XYZ color 39.7161, 39.4384, 39.2373.



This preview shows how white text looks on a background with the XYZ color 39.7161, 39.4384,

39.2373.

# Color Blindness Simulation

Color vision deficiency is a very complex topic, and I could not describe the different causes any better than Wikipedia does, so if you want to learn more, you should check out their [article about color blindness](#).

## Dichromacy



### Original Color

39.7161, 39.4384, 39.2373

### Protanopia

37.8471, 39.5338, 40.2864

### Deuteranopia

40.2693, 39.4590, 39.2121



## Tritanopia

41.1517, 39.5006, 46.0129

# Trichromacy



## Original Color

39.7161, 39.4384, 39.2373

## Protanomaly

38.4718, 39.5932, 39.7970

## Deuteranomaly

40.0237, 39.3324, 39.2006

## Tritanomaly

40.6026, 39.5358, 43.5214

# Monochromacy



## Original Color

39.7161, 39.4384, 39.2373

## Achromatopsia

38.2080, 40.1978, 43.7754

## Achromatomaly

38.6569, 39.9092, 42.2250

# CSS Examples

## Text

The CSS property to change the color of the text to XYZ 39.7161, 39.4384, 39.2373 is called "color". The color property can be set on classes, ids or directly on the HTML element.

This example shows how text in the color rgb(185, 164, 161) looks like.

```
.text, #text, p{  
    color:rgb(185, 164, 161)  
}
```

If you want to add a text shadow in that color use the text-shadow property, you can generate a text shadow directly with our [CSS Text Shadow Generator](#).

Here you see how black text with a 4 pixel rgb(185, 164, 161) colored shadow looks like.

```
.shadow{ text-shadow: 4px 4px 2px rgb(185, 164, 161) }
```

## Border

The CSS property to change the border of an element to XYZ 39.7161, 39.4384, 39.2373 is called "border". The border property can be set on classes, ids or directly on the HTML element.

This example shows the color as border, it can be applied via the CSS property "border" or "border-color".

```
.border, #border, table{ border:4px solid rgb(185, 164, 161) }
```



If only the border color should be changed use the property `border-color`.

```
.border{ border-color:rgb(185, 164, 161) }
```

If you want to add a box shadow in that color use:

Here you see how a box with a 4 pixel `rgb(185, 164, 161)` colored shadow looks like.

```
.boxshadow{ -moz-box-shadow:4px 4px 4px  
4px rgb(185, 164, 161); -webkit-box-  
shadow:4px 4px 4px 4px rgb(185, 164, 161);  
box-shadow:4px 4px 4px 4px rgb(185, 164,  
161) }
```

# Background

The CSS property to change the background color of an element to XYZ 39.7161, 39.4384, 39.2373 is called "background". The background property can be set on classes, ids or directly on the HTML element.

```
.background, #background, body{  
background: rgb(185, 164, 161) }
```

If only the background color should be changed can be used:

```
.background{ background-color: rgb(185,  
164, 161) }
```

This example shows the color as background, it is applied via the CSS property "background".

To optimize and compress your CSS code, you can use our [online CSS compressor and optimizer](#) based on csstidy. If you want to create a linear or radial gradient as background or border, check our [CSS Gradient Generator](#).

Hey! You found this booklet interesting? Support Converting Colors with the new Membership Option!

The pro membership hides all ads, plus gives you double the colors in the color bucket, and more awesome pro features!

**[Learn more, Memberships starting at \\$2.50/m!](#)**

**Follow me  
on Twitter!**

@ConvertingColor