

Converting Colors

XYZ(39.7244, 38.4257, 39.2178)

Have a look what the booklet for
XYZ(39.7244, 38.4257, 39.2178)
contains.

XYZ(39.7429, 38.4062, 39.0367)	3
<i>Conversions</i>	4
<i>Details</i>	6
<i>Harmonies</i>	12
<i>Previews</i>	24
<i>Color Blindness Simulation</i>	28
<i>CSS Examples</i>	31

Color

**XYZ(39.7429, 38.4062,
39.0367)**

Conversions

Conversions Part 1

Format	Color
Hex	BCA0A1
RGB	188, 160, 161
RGB Percent	74%, 63%, 63%
CMY	0.2627, 0.3725, 0.3686
CMYK	0.00, 0.15, 0.14, 0.26
HSL	358°, 17%, 68%
HSV	358°, 15%, 74%
XYZ	39.7429, 38.4062, 39.0367
YIQ	168.4860, 16.3670, 6.2470

Conversions

Conversions Part 2

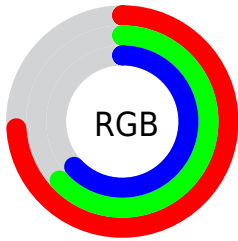
Format	Color
RYB	188, 160, 161
Decimal	12361889
CIELab	68.32, 10.45, 3.30
CIELCh	68, 10.954, 17.517
Yxy	38.4062, 0.3391, 0.3277
Android (android.graphics.Color)	4290551969 (0xFFBCA0A1)
YUV	168.4860, -3.6906, 17.1138
Hunter-Lab	61.9727, 6.0191, 6.0341

Details

The XYZ color **39.7429, 38.4062, 39.0367** is a light color, and the websafe version is hex **CC9999**. A complement of this color would be **41.4516, 47.0289, 53.9088**, and the grayscale version is **37.4712, 39.4227, 42.9313**.

A 20% lighter version of the original color is **74.0033, 72.7918, 75.1156**, and **18.0086, 16.9192, 17.0684** is the 20% darker color. If you saturate the color by 10%, you get **35.2424, 31.7808, 30.2120**, and if you desaturate by 10%, it is **44.9703, 46.1134, 49.2485**.

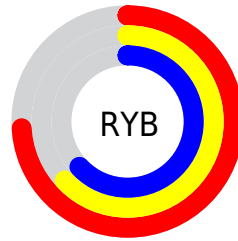
Distribution



Red (74%)

Green (63%)

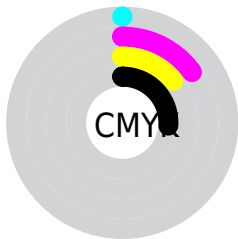
Blue (63%)



Red (74%)

Yellow (63%)

Blue (63%)

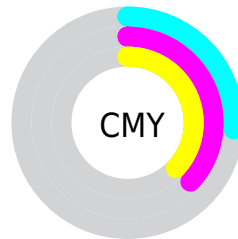


Cyan (0%)

Magenta (15%)

Yellow (14%)

Black (26%)



Cyan (26%)


Magenta (37%)


Yellow (37%)

Brightness & Saturation Gradients


These gradients show how the XYZ color 39.7429, 38.4062, 39.0367 changes by changing the brightness by 10 percent. The first figure shows a shift by +10% for each color and the second figure -10%.


Similar to the brightness gradients but the following saturation gradients show a change of the XYZ color 39.7429, 38.4062, 39.0367 by changing the saturation by 10% instead.


 39.7429, 38.4062,
39.0367


 39.7429, 38.4062,
39.0367

336.1918,
339.3593, 357.4771

 27.5215, 26.2981,
26.4802


 74.0587, 72.7303,
74.9153

 18.1039, 17.0468,
16.9543


 96.8837, 95.7151,
99.0746

 11.1247, 10.2679,
10.0403


123.9740,
123.0943, 127.9385

 6.2187, 5.5769,
5.3197

155.6950,
155.2522, 161.9256

 3.0204, 2.5896,
2.3740

192.4118,
192.5733, 201.4545

 1.1646, 0.9214,
0.7723

234.4900,

 0.0781, 0.0000,

235.4419, 246.9437

0.0000

282.2949,
284.2424, 298.8117

■ 0.0000, 0.0000,
0.0000

■ 39.7429, 38.4062,
39.0367

■ 39.7429, 38.4062,
39.0367

■ 35.2424, 31.7808,
30.2120

■ 44.9703, 46.1134,
49.2485

■ 31.4336, 26.1841,
22.7122

■ 50.9513, 54.9424,
60.9009

■ 28.2831, 21.5659,
16.4742

■ 57.7154, 64.9375,
74.0478

■ 25.7537, 17.8702,
11.4286

■ 65.2893, 76.1387,
88.7393

■ 23.8042, 15.0350,
7.4994

■ 73.6987, 88.5847,
105.0235

■ 22.3886, 12.9907,
4.6019

■ 74.5492, 89.4315,
107.9406

■ 21.4541, 11.6573,
2.6392

■ 20.9367, 10.9372,
1.4960

■ 20.7759, 10.7061,
1.1637

Harmonies

Analogous

The Analogous color harmony consists of three colors that are next to each other on the color wheel.



39.8223, 38.4062, 43.8946



39.7429, 38.4062, 39.0367



38.7788, 38.4062, 35.2268

Triad

The Triadic color harmony groups three colors that are evenly spaced from another and form a triangle on the color wheel.



39.7429, 38.4062, 39.0367



34.1235, 38.4062, 35.7529



35.7951, 38.4062, 51.7429

Complementary

The Complementary color scheme is a pair of colors which are on the opposite of each other on the color wheel.



39.7429, 38.4062, 39.0367



41.4516, 47.0289, 53.9088

Split Complementary

Split-complementary colors differ from the complementary color scheme. The scheme consists of three colors, the original color and two neighbors of the complement color.



34.3198, 38.4062, 49.1836



39.7429, 38.4062, 39.0367



33.3752, 38.4062, 39.8076

Square

The Square scheme is like the rectangle color scheme, but the four colors are evenly spaced on the color wheel.



39.7429, 38.4062, 39.0367



35.5195, 38.4062, 33.4355



33.4459, 38.4062, 44.7280



37.5064, 38.4062, 51.4956

Rectangle

The Rectangle color scheme consists of four colors that form a rectangle on the color wheel.



39.7429, 38.4062, 39.0367



37.7808, 38.4062, 33.6774



33.4459, 38.4062, 44.7280



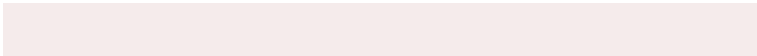
35.2562, 38.4062, 51.1744

Sweetspot

The Sweet Spot groups the original color and five complimentary colors.



39.7440, 38.4079, 39.0375



82.3440, 84.8166, 90.8989



42.0448, 39.2886, 52.9449



17.5419, 17.9948, 19.2240



90.7827, 95.5105, 104.0109



18.6292, 19.5994, 21.3438

Same Dimension

The Same Dimension uses a secret algorithm to generate beautiful new colors.



39.7440, 38.4079, 39.0375



69.1084, 65.3055, 65.0292



41.9523, 42.9648, 39.3417



9.5436, 9.5417, 9.9854



14.1511, 7.2916, 0.8232



0.5591, 0.2875, 0.0573

Inverse Universe

The Inverse Universe completely reimagines the original color for something new.



39.7440, 38.4079, 39.0375



69.1084, 65.3055, 65.0292



38.9837, 41.9218, 53.6145



9.5436, 9.5417, 9.9854



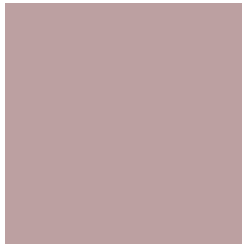
14.1511, 7.2916, 0.8232



0.5591, 0.2875, 0.0573

Previews

White Background



This preview shows how the XYZ color 39.7429, 38.4062, 39.0367 looks on a white background.

Color Contrast Check

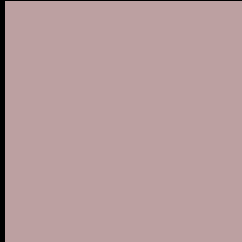
Large Text (above 18pt) WCAG AA × Fail

Any Text WCAG AA × Fail

Large Text (above 18pt) WCAG AAA × Fail

Any Text WCAG AAA × Fail

Black Background



This preview shows how the XYZ color 39.7429, 38.4062, 39.0367 looks on a black background.

Color Contrast Check

Large Text (above 18pt) WCAG AA ✓ Pass

Any Text WCAG AA ✓ Pass

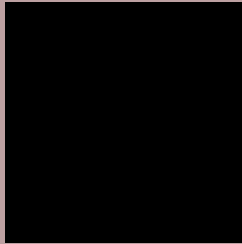
Large Text (above 18pt) WCAG AAA ✓ Pass

Any Text WCAG AAA ✓ Pass

If you want to check with other color combinations, try the [Color Contrast Checker](#).

XYZ 39.7429, 38.4062, 39.0367

Background



This preview shows how black text looks on a background with the XYZ color 39.7429, 38.4062, 39.0367.



This preview shows how white text looks on a background with the XYZ color 39.7429, 38.4062,

Color Blindness Simulation

Color vision deficiency is a very complex topic, and I could not describe the different causes any better than Wikipedia does, so if you want to learn more, you should check out their [article about color blindness](#).

Dichromacy



Original Color

39.7429, 38.4062, 39.0367

Protanopia

36.9146, 38.4988, 40.6074

Deuteranopia

39.1855, 38.3772, 39.0605



Tritanopia

40.5638, 38.2128, 43.7659

Trichromacy



Original Color

39.7429, 38.4062, 39.0367

Protanomaly

38.0178, 38.5424, 40.0860

Deuteranomaly

39.4276, 38.5021, 39.0718

Tritanomaly

40.3595, 38.4051, 41.8450

Monochromacy



Original Color

39.7429, 38.4062, 39.0367

Achromatopsia

37.2190, 39.1572, 42.6422

Achromatomaly

37.9259, 38.7408, 41.0761

CSS Examples

Text

The CSS property to change the color of the text to XYZ 39.7429, 38.4062, 39.0367 is called "color". The color property can be set on classes, ids or directly on the HTML element.

This example shows how text in the color `rgb(188, 160, 161)` looks like.

```
.text, #text, p{  
    color:rgb(188, 160, 161)  
}
```

If you want to add a text shadow in that color use the text-shadow property, you can generate a text shadow directly with our [CSS Text Shadow Generator](#).

Here you see how black text with a 4 pixel rgb(188, 160, 161) colored shadow looks like.

```
.shadow{ text-shadow: 4px 4px 2px rgb(188, 160, 161) }
```

Border

The CSS property to change the border of an element to XYZ 39.7429, 38.4062, 39.0367 is called "border". The border property can be set on classes, ids or directly on the HTML element.

This example shows the color as border, it can be applied via the CSS property "border" or "border-color".

```
.border, #border, table{ border:4px solid rgb(188, 160, 161) }
```


If only the border color should be changed use the property `border-color`.

```
.border{ border-color:rgb(188, 160, 161) }
```

If you want to add a box shadow in that color use:

Here you see how a box with a 4 pixel `rgb(188, 160, 161)` colored shadow looks like.

```
.boxshadow{ -moz-box-shadow:4px 4px 4px  
4px rgb(188, 160, 161); -webkit-box-  
shadow:4px 4px 4px 4px rgb(188, 160, 161);  
box-shadow:4px 4px 4px 4px rgb(188, 160,  
161) }
```

Background

The CSS property to change the background color of an element to XYZ 39.7429, 38.4062, 39.0367 is called "background". The background property can be set on classes, ids or directly on the HTML element.

```
.background, #background, body{  
background: rgb(188, 160, 161) }
```

If only the background color should be changed can be used:

```
.background{ background-color: rgb(188,  
160, 161) }
```

This example shows the color as background, it is applied via the CSS property "background".

To optimize and compress your CSS code, you can use our [online CSS compressor and optimizer](#) based on csstidy. If you want to create a linear or radial gradient as background or border, check our [CSS Gradient Generator](#).

Hey! You found this booklet interesting? Support Converting Colors with the new Membership Option!

The pro membership hides all ads, plus gives you double the colors in the color bucket, and more awesome pro features!

[Learn more, Memberships starting at \\$2.50/m!](#)

**Follow me
on Twitter!**

@ConvertingColor