

# Converting Colors

XYZ(39.9340, 36.6213, 33.6425)

Have a look what the booklet for  
XYZ(39.9340, 36.6213, 33.6425)  
contains.

<b>XYZ(40.0220, 36.6642, 33.8217)</b> .....	3
<i><b>Conversions</b></i> .....	4
<i><b>Details</b></i> .....	6
<i><b>Harmonies</b></i> .....	12
<i><b>Previews</b></i> .....	24
<i><b>Color Blindness Simulation</b></i> .....	28
<i><b>CSS Examples</b></i> .....	31

# Color

**XYZ(40.0220, 36.6642,  
33.8217)**

# Conversions

## Conversions Part 1

<b>Format</b>	<b>Color</b>
Hex	C69896
RGB	198, 152, 150
RGB Percent	78%, 60%, 59%
CMY	0.2235, 0.4039, 0.4118
CMYK	0.00, 0.23, 0.24, 0.22
HSL	3°, 30%, 68%
HSV	3°, 24%, 78%
XYZ	40.0220, 36.6642, 33.8217
YIQ	165.5260, 28.0580, 9.1300

# Conversions

## Conversions Part 2

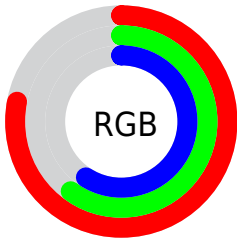
Format	Color
<a href="#">RYB</a>	<a href="#">198, 152, 150</a>
Decimal	<a href="#">13015190</a>
CIELab	<a href="#">67.02, 16.90, 7.70</a>
CIElCh	<a href="#">67, 18.570, 24.486</a>
Yxy	<a href="#">36.6642, 0.3622, 0.3318</a>
Android (android.graphics.Color)	<a href="#">4291205270 (0xFFC69896)</a>
YUV	<a href="#">165.5260, -7.6543, 28.4797</a>
Hunter-Lab	<a href="#">60.5510, 12.0178, 9.2683</a>

# Details

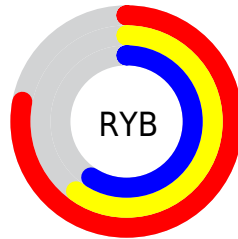
The XYZ color **40.0220, 36.6642, 33.8217** is a light color, and the websafe version is hex **CC9999**. A complement of this color would be **42.5103, 50.0400, 60.8446**, and the grayscale version is **36.0439, 37.9210, 41.2960**.

A 20% lighter version of the original color is **74.2104, 69.7622, 66.6809**, and **18.2335, 16.0479, 13.9409** is the 20% darker color. If you saturate the color by 10%, you get **35.7234, 30.4065, 25.1762**, and if you desaturate by 10%, it is **45.0846, 44.0182, 44.0519**.

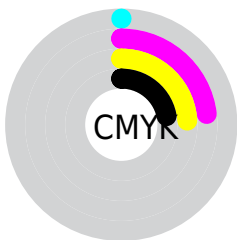
# Distribution



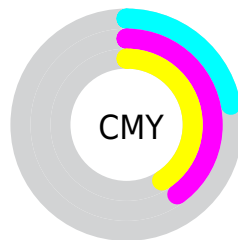
- Red (78%)
- Green (60%)
- Blue (59%)



- Red (78%)
- Yellow (60%)
- Blue (59%)



- Cyan (0%)
- Magenta (23%)
- Yellow (24%)
- Black (22%)




- Cyan (22%)
- Magenta (40%)
- Yellow (41%)


# Brightness & Saturation Gradients

These gradients show how the XYZ color 40.0220, 36.6642, 33.8217 changes by changing the brightness by 10 percent. The first figure shows a shift by +10% for each color and the second figure -10%.


Similar to the brightness gradients but the following saturation gradients show a change of the XYZ color 40.0220, 36.6642, 33.8217 by changing the saturation by 10% instead.





 40.0220, 36.6642,  
33.8217


 40.0220, 36.6642,  
33.8217


337.3491,  
331.8544, 334.0811

 27.7400, 24.9476,  
22.4804


 74.4811, 70.0560,  
66.7870

 18.2692, 16.0380,  
14.0086


 97.3890, 92.5000,  
89.2481

 11.2443, 9.5511,  
7.9879


124.5695,  
119.2886, 116.2529

 6.2999, 5.1023,  
3.9995

156.3880,  
150.8062, 148.2200

 3.0707, 2.3074,  
1.6251

193.2098,  
187.4372, 185.5678

 1.1912, 0.7776,  
0.3086

235.4004,

 0.0994, 0.0000,

229.5660, 228.7149

0.0000

283.3250,  
277.5769, 278.0798

■ 0.0000, 0.0000,  
0.0000

■ 40.0220, 36.6642,  
33.8217

■ 40.0220, 36.6642,  
33.8217

■ 35.7234, 30.4065,  
25.1762

■ 45.0846, 44.0182,  
44.0519

■ 32.1490, 25.1880,  
18.0339

■ 50.9427, 52.5122,  
55.9380

■ 29.2598, 20.9538,  
12.3099

■ 57.6295, 62.1936,  
69.5497

■ 27.0119, 17.6423,  
7.9094

■ 65.1756, 73.1056,  
84.9520

■ 25.3563, 15.1847,  
4.7266

■ 73.6099, 85.2893,  
102.2066

■ 24.2372, 13.5025,  
2.6390

■ 77.0989, 90.7459,  
108.0599

■ 23.5877, 12.5031,  
1.4990

■ 23.3786, 12.1853,  
1.1198

# Harmonies

## Analogous

The Analogous color harmony consists of three colors that are next to each other on the color wheel.



40.5317, 36.6642, 41.4326



40.0220, 36.6642, 33.8217



38.0955, 36.6642, 28.5632

# Triad

The Triadic color harmony groups three colors that are evenly spaced from another and form a triangle on the color wheel.



40.0220, 36.6642, 33.8217



30.6164, 36.6642, 31.5590



34.3296, 36.6642, 57.4684

# Complementary

The Complementary color scheme is a pair of colors which are on the opposite of each other on the color wheel.



40.0220, 36.6642, 33.8217



42.5103, 50.0400, 60.8446

# Split Complementary

Split-complementary colors differ from the complementary color scheme. The scheme consists of three colors, the original color and two neighbors of the complement color.



31.7909, 36.6642, 53.9497



40.0220, 36.6642, 33.8217



29.7226, 36.6642, 38.4468

# Square

The Square scheme is like the rectangle color scheme, but the four colors are evenly spaced on the color wheel.



40.0220, 36.6642, 33.8217



32.6478, 36.6642, 27.3855



30.1407, 36.6642, 46.7129



37.1454, 36.6642, 55.7951



# Rectangle

The Rectangle color scheme consists of four colors that form a rectangle on the color wheel.



40.0220, 36.6642, 33.8217



36.3195, 36.6642, 26.7440



30.1407, 36.6642, 46.7129



33.4173, 36.6642, 56.8407

# Sweetspot

The Sweet Spot groups the original color and five complimentary colors.



40.0230, 36.6659, 33.8225



87.0920, 88.4712, 92.7221



44.2049, 37.8227, 57.4347



18.5018, 18.7343, 19.5632



0.0000, 0.0000, 0.0000



20.3446, 21.4041, 23.3091



# Same Dimension

The Same Dimension uses a secret algorithm to generate beautiful new colors.



40.0230, 36.6659, 33.8225



66.7545, 58.9360, 51.6004



44.2412, 45.1023, 35.2285



10.6688, 10.7067, 11.0671



15.2192, 7.9555, 0.7334



0.7333, 0.4020, 0.0390



# Inverse Universe

The Inverse Universe completely reimagines the original color for something new.



42.5103, 50.0400, 60.8446



71.9010, 86.6162, 107.5368



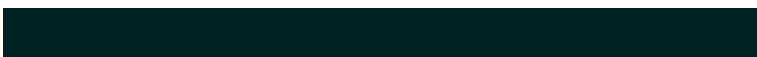
37.6000, 40.2193, 59.2079



10.9073, 11.9887, 13.6567



18.5825, 26.5589, 38.8913

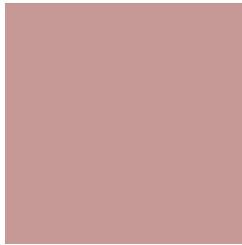


0.8919, 1.2816, 1.8455



# Previews

## White Background



This preview shows how the XYZ color 40.0220, 36.6642, 33.8217 looks on a white background.

## Color Contrast Check

Large Text (above 18pt) WCAG AA × Fail

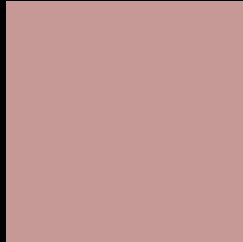
Any Text WCAG AA × Fail

Large Text (above 18pt) WCAG AAA × Fail

Any Text WCAG AAA × Fail



# Black Background



This preview shows how the XYZ color 40.0220, 36.6642, 33.8217 looks on a black background.

## Color Contrast Check

Large Text (above 18pt) WCAG AA ✓ Pass

Any Text WCAG AA ✓ Pass

Large Text (above 18pt) WCAG AAA ✓ Pass

Any Text WCAG AAA ✓ Pass

If you want to check with other color combinations, try the [Color Contrast Checker](#).

**XYZ 40.0220, 36.6642, 33.8217**

## **Background**



This preview shows how black text looks on a background with the XYZ color 40.0220, 36.6642, 33.8217.



This preview shows how white text looks on a background with the XYZ color 40.0220, 36.6642,



# Color Blindness Simulation

Color vision deficiency is a very complex topic, and I could not describe the different causes any better than Wikipedia does, so if you want to learn more, you should check out their [article about color blindness](#).

## Dichromacy



### Original Color

40.0220, 36.6642, 33.8217

### Protanopia

35.2464, 36.9195, 36.7210

### Deuteranopia

37.4188, 36.8140, 33.5674



## Tritanopia

40.9811, 36.5634, 39.0799

# Trichromacy



## Original Color

40.0220, 36.6642, 33.8217

## Protanomaly

36.8213, 36.7131, 35.7175

## Deuteranomaly

38.2995, 36.7657, 33.5117

## Tritanomaly

40.7914, 36.7440, 37.2901

# Monochromacy



## Original Color

40.0220, 36.6642, 33.8217

## Achromatopsia

36.2450, 38.1326, 41.5264

## Achromatomaly

37.4501, 37.4928, 38.5207

# CSS Examples

## Text

The CSS property to change the color of the text to XYZ 40.0220, 36.6642, 33.8217 is called "color". The color property can be set on classes, ids or directly on the HTML element.

This example shows how text in the color `rgb(198, 152, 150)` looks like.

```
.text, #text, p{  
    color:rgb(198, 152, 150)  
}
```

If you want to add a text shadow in that color use the text-shadow property, you can generate a text shadow directly with our [CSS Text Shadow Generator](#).

Here you see how black text with a 4 pixel rgb(198, 152, 150) colored shadow looks like.

```
.shadow{ text-shadow: 4px 4px 2px rgb(198, 152, 150) }
```

## Border

The CSS property to change the border of an element to XYZ 40.0220, 36.6642, 33.8217 is called "border". The border property can be set on classes, ids or directly on the HTML element.

This example shows the color as border, it can be applied via the CSS property "border" or "border-color".

```
.border, #border, table{ border:4px solid rgb(198, 152, 150) }
```



If only the border color should be changed use the property `border-color`.

```
.border{ border-color:rgb(198, 152, 150) }
```

If you want to add a box shadow in that color use:

Here you see how a box with a 4 pixel `rgb(198, 152, 150)` colored shadow looks like.

```
.boxshadow{ -moz-box-shadow:4px 4px 4px  
4px rgb(198, 152, 150); -webkit-box-  
shadow:4px 4px 4px 4px rgb(198, 152, 150);  
box-shadow:4px 4px 4px 4px rgb(198, 152,  
150) }
```

# Background

The CSS property to change the background color of an element to XYZ 40.0220, 36.6642, 33.8217 is called "background". The background property can be set on classes, ids or directly on the HTML element.

```
.background, #background, body{  
background: rgb(198, 152, 150) }
```

If only the background color should be changed can be used:

```
.background{ background-color: rgb(198,  
152, 150) }
```

This example shows the color as background, it is applied via the CSS property "background".

To optimize and compress your CSS code, you can use our [online CSS compressor and optimizer](#) based on csstidy. If you want to create a linear or radial gradient as background or border, check our [CSS Gradient Generator](#).

Hey! You found this booklet interesting? Support Converting Colors with the new Membership Option!

The pro membership hides all ads, plus gives you double the colors in the color bucket, and more awesome pro features!

**[Learn more, Memberships starting at \\$2.50/m!](#)**

**Follow me  
on Twitter!**

@ConvertingColor