

Converting Colors

XYZ(39.9680, 37.4316, 31.1051)

Have a look what the booklet for
XYZ(39.9680, 37.4316, 31.1051)
contains.

XYZ(39.9680, 37.4316, 31.1051)	3
<i>Conversions</i>	4
<i>Details</i>	6
<i>Harmonies</i>	12
<i>Previews</i>	24
<i>Color Blindness Simulation</i>	28
<i>CSS Examples</i>	31

Color

**XYZ(39.9680, 37.4316,
31.1051)**

Conversions

Conversions Part 1

Format	Color
Hex	C69B8F
RGB	198, 155, 143
RGB Percent	78%, 61%, 56%
CMY	0.2235, 0.3921, 0.4392
CMYK	0.00, 0.22, 0.28, 0.22
HSL	13°, 33%, 67%
HSV	13°, 28%, 78%
XYZ	39.9680, 37.4316, 31.1051
YIQ	166.4890, 29.4800, 5.3840

Conversions

Conversions Part 2

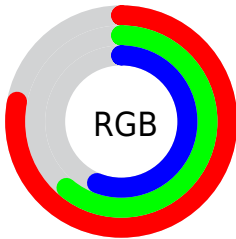
Format	Color
R_{YB}	198, 158, 143
Decimal	13015951
CIE _{Lab}	67.60, 14.25, 12.42
CIE _{LCh}	68, 18.902, 41.064
Yxy	37.4316, 0.3684, 0.3450
Android (android.graphics.Color)	4291206031 (0xFFC69B8F)
YUV	166.4890, -11.5801, 27.6351
Hunter-Lab	61.1814, 9.5414, 12.6834

Details

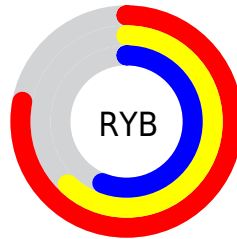
The XYZ color **39.9680, 37.4316, 31.1051** is a light color, and the websafe version is hex **CC9999**. A complement of this color would be **39.0793, 45.0335, 60.0590**, and the grayscale version is **36.5274, 38.4297, 41.8500**.

A 20% lighter version of the original color is **74.3646, 71.3844, 62.6825**, and **18.2538, 16.5306, 12.5846** is the 20% darker color. If you saturate the color by 10%, you get **36.1856, 32.0589, 23.0858**, and if you desaturate by 10%, it is **44.3474, 43.5741, 40.6304**.

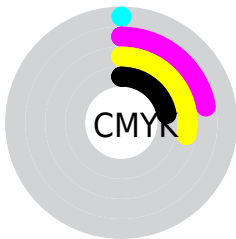
Distribution



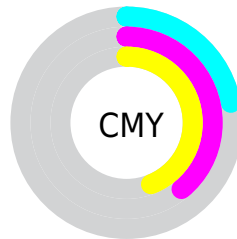
- Red (78%)
- Green (61%)
- Blue (56%)



- Red (78%)
- Yellow (62%)
- Blue (56%)



- Cyan (0%)
- Magenta (22%)
- Yellow (28%)
- Black (22%)



- Cyan (22%)
- Magenta (39%)
- Yellow (44%)

Brightness & Saturation Gradients

These gradients show how the XYZ color 39.9680, 37.4316, 31.1051 changes by changing the brightness by 10 percent. The first figure shows a shift by +10% for each color and the second figure -10%.

Similar to the brightness gradients but the following saturation gradients show a change of the XYZ color 39.9680, 37.4316, 31.1051 by changing the saturation by 10% instead.

■ 39.9680, 37.4316,
31.1051

■ 39.9680, 37.4316,
31.1051

337.1254,
335.1754, 321.3884

■ 27.6977, 25.5418,
20.4198

■ 74.3994, 71.2361,
62.4870

■ 18.2372, 16.4812,
12.5134

■ 97.2913, 93.9196,
84.0207

■ 11.2211, 9.8653,
6.9676

124.4543,
120.9698, 110.0075

■ 6.2842, 5.3097,
3.3637

156.2540,
152.7712, 140.8661

■ 3.0609, 2.4301,
1.2832

193.0555,
189.7080, 177.0149

■ 1.1861, 0.8413,
0.0480

235.2244,

■ 0.0953, 0.0000,

232.1647, 218.8725

0.0000

283.1259,
280.5257, 266.8575

■ 0.0000, 0.0000,
0.0000

■ 39.9680, 37.4316,
31.1051

■ 39.9680, 37.4316,
31.1051

■ 36.1856, 32.0589,
23.0858

■ 44.3474, 43.5741,
40.6304

■ 32.9708, 27.4204,
16.4927

■ 49.3456, 50.5100,
51.7311

■ 30.2962, 23.4852,
11.2421

■ 54.9867, 58.2683,
64.4754

■ 28.1308, 20.2183,
7.2407

■ 61.2928, 66.8748,
78.9265

■ 26.4403, 17.5814,
4.3830

■ 68.2849, 76.3544,
95.1445

■ 25.1856, 15.5323,
2.5458

■ 74.8684, 86.2850,
107.3164

■ 24.3157, 14.0210,
1.5511

■ 77.0988, 90.7458,
108.0599

■ 24.1605, 13.7492,
1.3805

Harmonies

Analogous

The Analogous color harmony consists of three colors that are next to each other on the color wheel.



41.3599, 37.4316, 37.7564



39.9680, 37.4316, 31.1051



37.4255, 37.4316, 27.3937

Triad

The Triadic color harmony groups three colors that are evenly spaced from another and form a triangle on the color wheel.



39.9680, 37.4316, 31.1051



30.5404, 37.4316, 35.7717



36.6629, 37.4316, 58.6048

Complementary

The Complementary color scheme is a pair of colors which are on the opposite of each other on the color wheel.



39.9680, 37.4316, 31.1051



39.0793, 45.0335, 60.0590

Split Complementary

Split-complementary colors differ from the complementary color scheme. The scheme consists of three colors, the original color and two neighbors of the complement color.



33.7915, 37.4316, 57.8820



39.9680, 37.4316, 31.1051



30.3610, 37.4316, 43.9118

Square

The Square scheme is like the rectangle color scheme, but the four colors are evenly spaced on the color wheel.



39.9680, 37.4316, 31.1051



32.0251, 37.4316, 29.8233



31.5211, 37.4316, 52.2229



39.3836, 37.4316, 54.0807

Rectangle

The Rectangle color scheme consists of four colors that form a rectangle on the color wheel.



39.9680, 37.4316, 31.1051



35.4737, 37.4316, 26.7354



31.5211, 37.4316, 52.2229



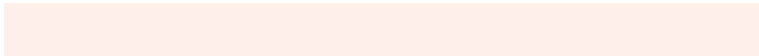
35.6817, 37.4316, 58.9818

Sweetspot

The Sweet Spot groups the original color and five complimentary colors.



39.9690, 37.4333, 31.1059



87.0595, 88.9987, 90.8845



41.9833, 35.1999, 51.0827



18.3307, 18.6296, 18.7741



0.0000, 0.0000, 0.0000



20.3446, 21.4041, 23.3091

Same Dimension

The Same Dimension uses a secret algorithm to generate beautiful new colors.



39.9690, 37.4333, 31.1059



66.8204, 60.6826, 46.6443



45.0604, 47.6161, 32.8030



10.8184, 11.0060, 11.1169



15.7646, 9.0464, 0.9152



0.8017, 0.5388, 0.0618

Inverse Universe

The Inverse Universe completely reimagines the original color for something new.



39.0793, 45.0335, 60.0590



64.9903, 76.2179, 105.8939



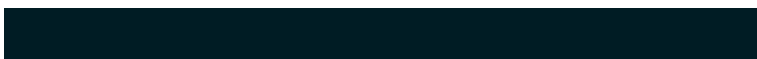
33.8478, 34.5706, 58.3152



10.7427, 11.6595, 13.6018



14.2935, 17.9809, 37.4617



0.7270, 0.9517, 1.7905

Previews

White Background



This preview shows how the XYZ color 39.9680, 37.4316, 31.1051 looks on a white background.

Color Contrast Check

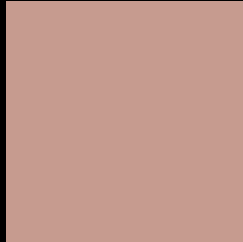
Large Text (above 18pt) WCAG AA × Fail

Any Text WCAG AA × Fail

Large Text (above 18pt) WCAG AAA × Fail

Any Text WCAG AAA × Fail

Black Background



This preview shows how the XYZ color 39.9680, 37.4316, 31.1051 looks on a black background.

Color Contrast Check

Large Text (above 18pt) WCAG AA ✓ Pass

Any Text WCAG AA ✓ Pass

Large Text (above 18pt) WCAG AAA ✓ Pass

Any Text WCAG AAA ✓ Pass

If you want to check with other color combinations, try the [Color Contrast Checker](#).

XYZ 39.9680, 37.4316, 31.1051

Background



This preview shows how black text looks on a background with the XYZ color 39.9680, 37.4316, 31.1051.



This preview shows how white text looks on a background with the XYZ color 39.9680, 37.4316,

Color Blindness Simulation

Color vision deficiency is a very complex topic, and I could not describe the different causes any better than Wikipedia does, so if you want to learn more, you should check out their [article about color blindness](#).

Dichromacy



Original Color

39.9680, 37.4316, 31.1051

Protanopia

35.6340, 37.4597, 33.3693

Deuteranopia

38.2669, 37.5681, 30.8257



Tritanopia

41.7485, 37.4162, 40.1436

Trichromacy



Original Color

39.9680, 37.4316, 31.1051

Protanomaly

36.9892, 37.3888, 32.4613

Deuteranomaly

38.8476, 37.6132, 30.8038

Tritanomaly

40.9452, 37.3249, 36.4989

Monochromacy



Original Color

39.9680, 37.4316, 31.1051

Achromatopsia

36.2450, 38.1326, 41.5264

Achromatomaly

37.4520, 37.7743, 37.6650

CSS Examples

Text

The CSS property to change the color of the text to XYZ 39.9680, 37.4316, 31.1051 is called "color". The color property can be set on classes, ids or directly on the HTML element.

This example shows how text in the color `rgb(198, 155, 143)` looks like.

```
.text, #text, p{  
    color:rgb(198, 155, 143)  
}
```

If you want to add a text shadow in that color use the text-shadow property, you can generate a text shadow directly with our [CSS Text Shadow Generator](#).

Here you see how black text with a 4 pixel rgb(198, 155, 143) colored shadow looks like.

```
.shadow{ text-shadow: 4px 4px 2px rgb(198, 155, 143) }
```

Border

The CSS property to change the border of an element to XYZ 39.9680, 37.4316, 31.1051 is called "border". The border property can be set on classes, ids or directly on the HTML element.

This example shows the color as border, it can be applied via the CSS property "border" or "border-color".

```
.border, #border, table{ border:4px solid rgb(198, 155, 143) }
```


If only the border color should be changed use the property `border-color`.

```
.border{ border-color:rgb(198, 155, 143) }
```

If you want to add a box shadow in that color use:

Here you see how a box with a 4 pixel `rgb(198, 155, 143)` colored shadow looks like.

```
.boxshadow{ -moz-box-shadow:4px 4px 4px  
4px rgb(198, 155, 143); -webkit-box-  
shadow:4px 4px 4px 4px rgb(198, 155, 143);  
box-shadow:4px 4px 4px 4px rgb(198, 155,  
143) }
```

Background

The CSS property to change the background color of an element to XYZ 39.9680, 37.4316, 31.1051 is called "background". The background property can be set on classes, ids or directly on the HTML element.

```
.background, #background, body{  
background: rgb(198, 155, 143) }
```

If only the background color should be changed can be used:

```
.background{ background-color: rgb(198,  
155, 143) }
```

This example shows the color as background, it is applied via the CSS property "background".

To optimize and compress your CSS code, you can use our [online CSS compressor and optimizer](#) based on csstidy. If you want to create a linear or radial gradient as background or border, check our [CSS Gradient Generator](#).

Hey! You found this booklet interesting? Support Converting Colors with the new Membership Option!

The pro membership hides all ads, plus gives you double the colors in the color bucket, and more awesome pro features!

[Learn more, Memberships starting at \\$2.50/m!](#)

**Follow me
on Twitter!**

@ConvertingColor