

Converting Colors

XYZ(4.7633, 3.7286, 3.3744)

Have a look what the booklet for
XYZ(4.7633, 3.7286, 3.3744)
contains.

XYZ(4.7633, 3.7286, 3.3744)	3
<i>Conversions</i>	4
<i>Details</i>	6
<i>Harmonies</i>	12
<i>Previews</i>	24
<i>Color Blindness Simulation</i>	27
<i>CSS Examples</i>	30

Color

XYZ(4.7633, 3.7286, 3.3744)

Conversions

Conversions Part 1

Format	Color
Hex	502C31
RGB	80, 44, 49
RGB Percent	31%, 17%, 19%
CMY	0.6863, 0.8274, 0.8078
CMYK	0.00, 0.45, 0.39, 0.69
HSL	352°, 29%, 24%
HSV	352°, 45%, 31%
XYZ	4.7633, 3.7286, 3.3744
YIQ	55.3340, 19.8510, 9.1870

Conversions

Conversions Part 2

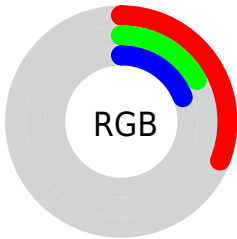
Format	Color
R_{YB}	80, 44, 49
Decimal	5254193
CIE _{Lab}	22.75, 17.30, 3.99
CIE _{LCh}	23, 17.759, 12.998
Yxy	3.7286, 0.4014, 0.3142
Android (android.graphics.Color)	4283444273 (0xFF502C31)
YUV	55.3340, -3.1227, 21.6321
Hunter-Lab	19.3096, 10.2407, 3.1556

Details

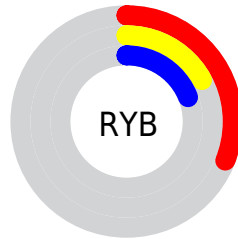
The XYZ color **4.7633, 3.7286, 3.3744** is a dark color, and the websafe version is hex **663333**. A complement of this color would be **5.1775, 6.7808, 7.6928**, and the grayscale version is **3.6759, 3.8673, 4.2115**.

A 20% lighter version of the original color is **15.0818, 12.9638, 12.5338**, and **0.7684, 0.3955, 0.0646** is the 20% darker color. If you saturate the color by 10%, you get **4.3591, 3.1353, 2.5764**, and if you desaturate by 10%, it is **5.2475, 4.4461, 4.3089**.

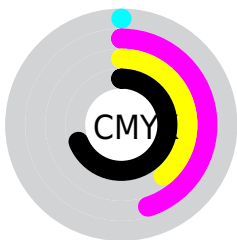
Distribution



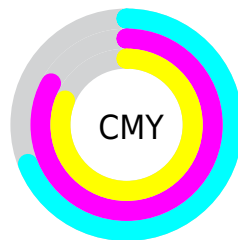
- Red (31%)
- Green (17%)
- Blue (19%)



- Red (31%)
- Yellow (17%)
- Blue (19%)



- Cyan (0%)
- Magenta (45%)
- Yellow (39%)
- Black (69%)



- Cyan (69%)
- Magenta (83%)
- Yellow (81%)

Brightness & Saturation Gradients

These gradients show how the XYZ color 4.7633, 3.7286, 3.3744 changes by changing the brightness by 10 percent. The first figure shows a shift by +10% for each color and the second figure -10%.

Similar to the brightness gradients but the following saturation gradients show a change of the XYZ color 4.7633, 3.7286, 3.3744 by changing the saturation by 10% instead.

■ 4.7633, 3.7286,
3.3744

■ 4.7633, 3.7286,
3.3744

142.5084,
136.7412, 140.9950

■ 2.1424, 1.5229,
1.2888

■ 15.0581, 12.9933,
12.5391

■ 0.7121, 0.3048,
0.0526

■ 23.4627, 20.8211,
20.4553

■ 0.0000, 0.0000,
0.0000

■ 34.5259, 31.2917,
31.1522

■ 48.6131, 44.7896,
45.0482

■ 66.0895, 61.6990,
62.5620

■ 87.3207, 82.4045,

84.1120

112.6718,
107.2904, 110.1168

4.7633, 3.7286,
3.3744

4.7633, 3.7286,
3.3744

4.3591, 3.1353,
2.5764

5.2475, 4.4461,
4.3089

4.0302, 2.6588,
1.9082

5.8153, 5.2939,
5.3856

3.7720, 2.2913,
1.3631

6.4706, 6.2780,
6.6104

3.5792, 2.0243,
0.9333

7.2168, 7.4043,
7.9884

3.4348, 1.8256,
0.6068

8.0574, 8.6780,
9.5247

■ 3.3692, 1.7299,
0.4762

■ 8.9954, 10.1041,
11.2242

■ 10.0338, 11.6875,
13.0915

■ 11.1755, 13.4329,
15.1310

■ 12.4233, 15.3446,
17.3470

Harmonies

Analogous

The Analogous color harmony consists of three colors that are next to each other on the color wheel.



4.7384, 3.7286, 5.0818



4.7633, 3.7286, 3.3744



4.4366, 3.7286, 2.2282

Triad

The Triadic color harmony groups three colors that are evenly spaced from another and form a triangle on the color wheel.



4.7633, 3.7286, 3.3744



2.8276, 3.7286, 2.1227



3.2236, 3.7286, 8.0089

Complementary

The Complementary color scheme is a pair of colors which are on the opposite of each other on the color wheel.



4.7633, 3.7286, 3.3744



5.1775, 6.7808, 7.6928

Split Complementary

Split-complementary colors differ from the complementary color scheme. The scheme consists of three colors, the original color and two neighbors of the complement color.



2.7799, 3.7286, 6.6917



4.7633, 3.7286, 3.3744



2.5692, 3.7286, 3.1849

Square

The Square scheme is like the rectangle color scheme, but the four colors are evenly spaced on the color wheel.



4.7633, 3.7286, 3.3744



3.2957, 3.7286, 1.6520



2.5527, 3.7286, 4.8323



3.8043, 3.7286, 8.1014

Rectangle

The Rectangle color scheme consists of four colors that form a rectangle on the color wheel.



4.7633, 3.7286, 3.3744



4.0823, 3.7286, 1.8047



2.5527, 3.7286, 4.8323



3.0551, 3.7286, 7.6810

Sweetspot

The Sweet Spot groups the original color and five complimentary colors.



4.7634, 3.7288, 3.3745



11.4795, 11.2387, 11.8844



5.2192, 3.8605, 8.0594



2.9315, 2.8459, 2.9973



43.9474, 46.2361, 50.3512



3.4509, 3.6306, 3.9538

Same Dimension

The Same Dimension uses a secret algorithm to generate beautiful new colors.



4.7634, 3.7288, 3.3745



7.5459, 5.3825, 4.3738



5.2064, 4.7743, 3.0303



1.8978, 1.9085, 2.0423



5.8558, 3.0092, 0.7063



33.5586, 17.2696, 2.9467

Inverse Universe

The Inverse Universe completely reimagines the original color for something new.



4.7634, 3.7288, 3.3745



7.5459, 5.3825, 4.3738



4.5178, 5.1768, 8.3504



1.8978, 1.9085, 2.0423



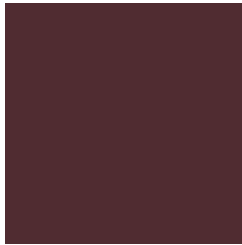
5.8558, 3.0092, 0.7063



33.5586, 17.2696, 2.9467

Previews

White Background



This preview shows how the XYZ color 4.7633, 3.7286, 3.3744 looks on a white background.

Color Contrast Check

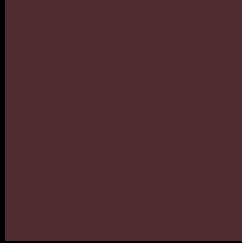
Large Text (above 18pt) WCAG AA ✓ Pass

Any Text WCAG AA ✓ Pass

Large Text (above 18pt) WCAG AAA ✓ Pass

Any Text WCAG AAA ✓ Pass

Black Background



This preview shows how the XYZ color 4.7633, 3.7286, 3.3744 looks on a black background.

Color Contrast Check

Large Text (above 18pt) WCAG AA × Fail

Any Text WCAG AA × Fail

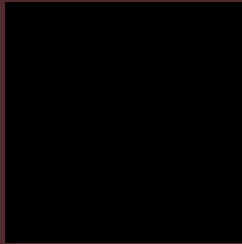
Large Text (above 18pt) WCAG AAA × Fail

Any Text WCAG AAA × Fail

If you want to check with other color combinations, try the [Color Contrast Checker](#).

XYZ 4.7633, 3.7286, 3.3744

Background



This preview shows how black text looks on a background with the XYZ color 4.7633, 3.7286, 3.3744.

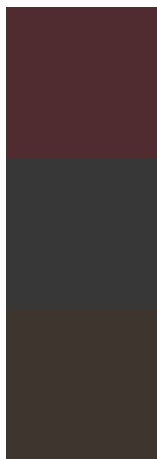


This preview shows how white text looks on a background with the XYZ color 4.7633, 3.7286, 3.3744.

Color Blindness Simulation

Color vision deficiency is a very complex topic, and I could not describe the different causes any better than Wikipedia does, so if you want to learn more, you should check out their [article about color blindness](#).

Dichromacy



Original Color

4.7633, 3.7286, 3.3744

Protanopia

3.6867, 3.8490, 4.1630

Deuteranopia

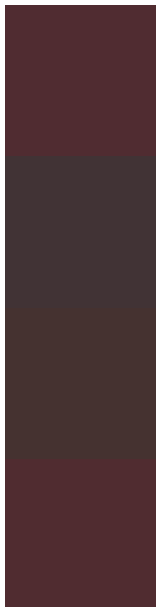
3.8361, 3.8082, 3.2222



Tritanopia

4.7220, 3.7121, 3.1569

Trichromacy



Original Color

4.7633, 3.7286, 3.3744

Protanomaly

4.0064, 3.7485, 3.8805

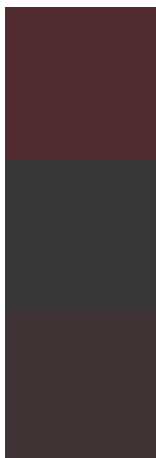
Deuteranomaly

4.1283, 3.7598, 3.3044

Tritanomaly

4.7424, 3.7202, 3.2644

Monochromacy



Original Color

4.7633, 3.7286, 3.3744

Achromatopsia

3.6313, 3.8204, 4.1605

Achromatomaly

3.9408, 3.7147, 3.8775

CSS Examples

Text

The CSS property to change the color of the text to XYZ 4.7633, 3.7286, 3.3744 is called "color". The color property can be set on classes, ids or directly on the HTML element.

This example shows how text in the color rgb(80, 44, 49) looks like.

```
.text, #text, p{  
    color:rgb(80, 44, 49)  
}
```

If you want to add a text shadow in that color use the text-shadow property, you can generate a text shadow directly with our [CSS Text Shadow Generator](#).

Here you see how black text with a 4 pixel rgb(80, 44, 49) colored shadow looks like.

```
.shadow{ text-shadow: 4px 4px 2px rgb(80, 44, 49) }
```

Border

The CSS property to change the border of an element to XYZ 4.7633, 3.7286, 3.3744 is called "border". The border property can be set on classes, ids or directly on the HTML element.

This example shows the color as border, it can be applied via the CSS property "border" or "border-color".

```
.border, #border, table{ border:4px solid rgb(80, 44, 49) }
```

If only the border color should be changed use the property `border-color`.

```
.border{ border-color:rgb(80, 44, 49) }
```

If you want to add a box shadow in that color use:

Here you see how a box with a 4 pixel `rgb(80, 44, 49)` colored shadow looks like.

```
.boxshadow{ -moz-box-shadow:4px 4px 4px  
4px rgb(80, 44, 49); -webkit-box-  
shadow:4px 4px 4px 4px rgb(80, 44, 49);  
box-shadow:4px 4px 4px 4px rgb(80, 44, 49)  
}
```


Background

The CSS property to change the background color of an element to XYZ 4.7633, 3.7286, 3.3744 is called "background". The background property can be set on classes, ids or directly on the HTML element.

```
.background, #background, body{  
background: rgb(80, 44, 49) }
```

If only the background color should be changed can be used:

```
.background{ background-color: rgb(80, 44,  
49) }
```

This example shows the color as background, it is applied via the CSS property "background".

To optimize and compress your CSS code, you can use our [online CSS compressor and optimizer](#) based on csstidy. If you want to create a linear or radial gradient as background or border, check our [CSS Gradient Generator](#).

Hey! You found this booklet interesting? Support Converting Colors with the new Membership Option!

The pro membership hides all ads, plus gives you double the colors in the color bucket, and more awesome pro features!

[Learn more, Memberships starting at \\$2.50/m!](#)

**Follow me
on Twitter!**

@ConvertingColor