

Converting Colors

XYZ(40.1783, 36.7247, 34.6717)

Have a look what the booklet for
XYZ(40.1783, 36.7247, 34.6717)
contains.

XYZ(40.1844, 36.7292, 34.6773)	3
<i>Conversions</i>	4
<i>Details</i>	6
<i>Harmonies</i>	12
<i>Previews</i>	24
<i>Color Blindness Simulation</i>	28
<i>CSS Examples</i>	31

Color

**XYZ(40.1844, 36.7292,
34.6773)**

Conversions

Conversions Part 1

Format	Color
Hex	C69898
RGB	198, 152, 152
RGB Percent	78%, 60%, 60%
CMY	0.2235, 0.4039, 0.4039
CMYK	0.00, 0.23, 0.23, 0.22
HSL	0°, 29%, 69%
HSV	0°, 23%, 78%
XYZ	40.1844, 36.7292, 34.6773
YIQ	165.7540, 27.4160, 9.7520

Conversions

Conversions Part 2

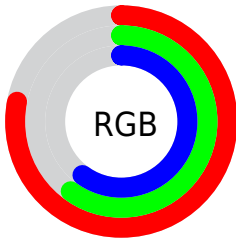
Format	Color
RYB	198, 152, 152
Decimal	13015192
CIELab	67.07, 17.19, 6.65
CIElCh	67, 18.435, 21.140
Yxy	36.7292, 0.3601, 0.3291
Android (android.graphics.Color)	4291205272 (0xFFC69898)
YUV	165.7540, -6.7807, 28.2797
Hunter-Lab	60.6046, 12.2978, 8.4981

Details

The XYZ color **40.1844, 36.7292, 34.6773** is a light color, and the websafe version is hex **CC9999**. A complement of this color would be **43.3355, 51.1394, 61.0131**, and the grayscale version is **36.1500, 38.0326, 41.4175**.

A 20% lighter version of the original color is **74.4519, 69.8588, 67.9526**, and **18.3303, 16.0866, 14.4508** is the 20% darker color. If you saturate the color by 10%, you get **35.7467, 30.2358, 25.8541**, and if you desaturate by 10%, it is **45.4312, 44.4070, 45.1066**.

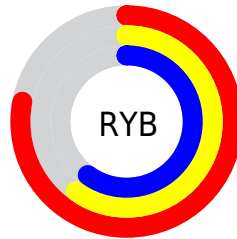
Distribution



Red (78%)

Green (60%)

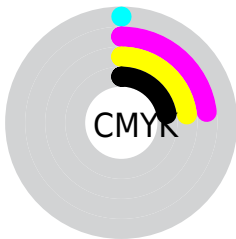
Blue (60%)



Red (78%)

Yellow (60%)

Blue (60%)

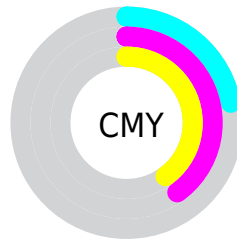


Cyan (0%)

Magenta (23%)

Yellow (23%)

Black (22%)



Cyan (22%)


Magenta (40%)

Yellow (40%)

Brightness & Saturation Gradients


These gradients show how the XYZ color 40.1844, 36.7292, 34.6773 changes by changing the brightness by 10 percent. The first figure shows a shift by +10% for each color and the second figure -10%.


Similar to the brightness gradients but the following saturation gradients show a change of the XYZ color 40.1844, 36.7292, 34.6773 by changing the saturation by 10% instead.

 40.1844, 36.7292,
34.6773


 40.1844, 36.7292,
34.6773


338.0213,
332.1366, 338.0025

 27.8672, 24.9979,
23.1328


 74.7268, 70.1561,
68.1314

 18.3655, 16.0755,
14.4854


 97.6827, 92.6205,
90.8782

 11.3140, 9.5776,
8.3164


124.9155,
119.4313, 118.1961

 6.3473, 5.1198,
4.2074

156.7907,
150.9731, 150.5038

 3.1000, 2.3177,
1.7398

193.6734,
187.6301, 188.2198

 1.2069, 0.7831,
0.3878

235.9292,

 0.1118, 0.0000,

229.7867, 231.7625

0.0000

283.9234,
277.8274, 281.5506

0.0000, 0.0000,
0.0000

40.1844, 36.7292,
34.6773

40.1844, 36.7292,
34.6773

35.7467, 30.2358,
25.8541

45.4312, 44.4070,
45.1066

32.0751, 24.8632,
18.5551

51.5214, 53.3186,
57.2139

29.1271, 20.5494,
12.6948

58.4909, 63.5168,
71.0693

26.8549, 17.2245,
8.1781

66.3726, 75.0498,
86.7383

25.2051, 14.8102,
4.8985

75.1979, 87.9635,
104.2832

■ 24.1159, 13.2164,
2.7336

■ 77.0988, 90.7458,
108.0599

■ 23.5133, 12.3345,
1.5360

■ 23.2890, 12.0061,
1.0900

Harmonies

Analogous

The Analogous color harmony consists of three colors that are next to each other on the color wheel.



40.5132, 36.7292, 42.4178



40.1844, 36.7292, 34.6773



38.4035, 36.7292, 29.1324

Triad

The Triadic color harmony groups three colors that are evenly spaced from another and form a triangle on the color wheel.



40.1844, 36.7292, 34.6773



30.8775, 36.7292, 31.0645



34.0861, 36.7292, 57.2722

Complementary

The Complementary color scheme is a pair of colors which are on the opposite of each other on the color wheel.



40.1844, 36.7292, 34.6773



43.3355, 51.1394, 61.0131

Split Complementary

Split-complementary colors differ from the complementary color scheme. The scheme consists of three colors, the original color and two neighbors of the complement color.



31.6351, 36.7292, 53.2616



40.1844, 36.7292, 34.6773



29.8489, 36.7292, 37.6602

Square

The Square scheme is like the rectangle color scheme, but the four colors are evenly spaced on the color wheel.



40.1844, 36.7292, 34.6773



33.0013, 36.7292, 27.2489



30.1186, 36.7292, 45.8234



36.8909, 36.7292, 56.1929

Rectangle

The Rectangle color scheme consists of four colors that form a rectangle on the color wheel.



40.1844, 36.7292, 34.6773



36.6822, 36.7292, 27.0865



30.1186, 36.7292, 45.8234



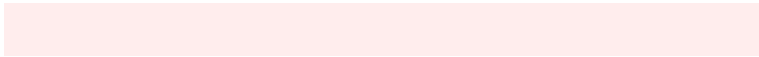
33.1959, 36.7292, 56.4569

Sweetspot

The Sweet Spot groups the original color and five complimentary colors.



40.1854, 36.7309, 34.6781



86.8760, 88.0393, 92.6501



44.7103, 38.5399, 58.5087



18.4520, 18.6347, 19.5466



0.0000, 0.0000, 0.0000



20.3446, 21.4041, 23.3091

Same Dimension

The Same Dimension uses a secret algorithm to generate beautiful new colors.



40.1854, 36.7309, 34.6781



66.9085, 58.8213, 52.9551



44.2865, 44.9331, 36.0451



10.6340, 10.6371, 11.0555



15.1454, 7.8079, 0.7088



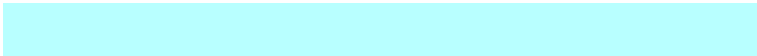
0.7172, 0.3698, 0.0336

Inverse Universe

The Inverse Universe completely reimagines the original color for something new.



43.3355, 51.1394, 61.0131



73.4797, 88.8774, 107.8900



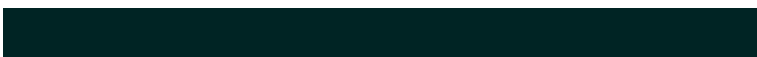
38.4723, 41.4130, 59.3921



10.9467, 12.0674, 13.6698



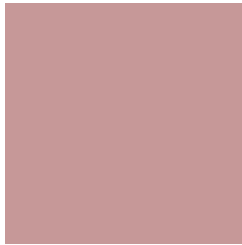
19.7592, 28.9124, 39.2836



0.9356, 1.3690, 1.8601

Previews

White Background



This preview shows how the XYZ color 40.1844, 36.7292, 34.6773 looks on a white background.

Color Contrast Check

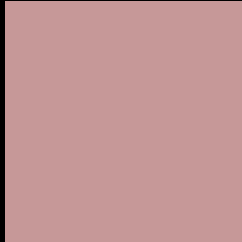
Large Text (above 18pt) WCAG AA × Fail

Any Text WCAG AA × Fail

Large Text (above 18pt) WCAG AAA × Fail

Any Text WCAG AAA × Fail

Black Background



This preview shows how the XYZ color 40.1844, 36.7292, 34.6773 looks on a black background.

Color Contrast Check

Large Text (above 18pt) WCAG AA ✓ Pass

Any Text WCAG AA ✓ Pass

Large Text (above 18pt) WCAG AAA ✓ Pass

Any Text WCAG AAA ✓ Pass

If you want to check with other color combinations, try the [Color Contrast Checker](#).

XYZ 40.1844, 36.7292, 34.6773

Background



This preview shows how black text looks on a background with the XYZ color 40.1844, 36.7292, 34.6773.



This preview shows how white text looks on a background with the XYZ color 40.1844, 36.7292, 34.6773.

Color Blindness Simulation

Color vision deficiency is a very complex topic, and I could not describe the different causes any better than Wikipedia does, so if you want to learn more, you should check out their [article about color blindness](#).

Dichromacy



Original Color

40.1844, 36.7292, 34.6773

Protanopia

35.4172, 36.9878, 37.6204

Deuteranopia

37.5799, 36.8784, 34.4157



Tritanopia

40.9811, 36.5634, 39.0799

Trichromacy



Original Color

40.1844, 36.7292, 34.6773

Protanomaly

36.9893, 36.7803, 36.6022

Deuteranomaly

38.4606, 36.8301, 34.3600

Tritanomaly

40.7914, 36.7440, 37.2901

Monochromacy



Original Color

40.1844, 36.7292, 34.6773

Achromatopsia

36.2450, 38.1326, 41.5264

Achromatomaly

37.5380, 37.5279, 38.9834

CSS Examples

Text

The CSS property to change the color of the text to XYZ 40.1844, 36.7292, 34.6773 is called "color". The color property can be set on classes, ids or directly on the HTML element.

This example shows how text in the color `rgb(198, 152, 152)` looks like.

```
.text, #text, p{  
    color:rgb(198, 152, 152)  
}
```

If you want to add a text shadow in that color use the text-shadow property, you can generate a text shadow directly with our [CSS Text Shadow Generator](#).

Here you see how black text with a 4 pixel rgb(198, 152, 152) colored shadow looks like.

```
.shadow{ text-shadow: 4px 4px 2px rgb(198, 152, 152) }
```

Border

The CSS property to change the border of an element to XYZ 40.1844, 36.7292, 34.6773 is called "border". The border property can be set on classes, ids or directly on the HTML element.

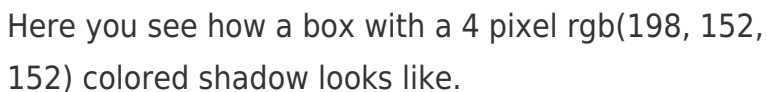
This example shows the color as border, it can be applied via the CSS property "border" or "border-color".

```
.border, #border, table{ border:4px solid rgb(198, 152, 152) }
```


If only the border color should be changed use the property `border-color`.

```
.border{ border-color:rgb(198, 152, 152) }
```

If you want to add a box shadow in that color use:



Here you see how a box with a 4 pixel `rgb(198, 152, 152)` colored shadow looks like.

```
.boxshadow{ -moz-box-shadow:4px 4px 4px 4px rgb(198, 152, 152); -webkit-box-shadow:4px 4px 4px 4px rgb(198, 152, 152); box-shadow:4px 4px 4px 4px rgb(198, 152, 152) }
```

Background

The CSS property to change the background color of an element to XYZ 40.1844, 36.7292, 34.6773 is called "background". The background property can be set on classes, ids or directly on the HTML element.

```
.background, #background, body{  
background: rgb(198, 152, 152) }
```

If only the background color should be changed can be used:

```
.background{ background-color: rgb(198,  
152, 152) }
```

This example shows the color as background, it is applied via the CSS property "background".

To optimize and compress your CSS code, you can use our [online CSS compressor and optimizer](#) based on csstidy. If you want to create a linear or radial gradient as background or border, check our [CSS Gradient Generator](#).

Hey! You found this booklet interesting? Support Converting Colors with the new Membership Option!

The pro membership hides all ads, plus gives you double the colors in the color bucket, and more awesome pro features!

[Learn more, Memberships starting at \\$2.50/m!](#)

**Follow me
on Twitter!**

@ConvertingColor