

Converting Colors

XYZ(40.2968, 36.9624, 30.2157)

Have a look what the booklet for
XYZ(40.2968, 36.9624, 30.2157)
contains.

XYZ(40.1233, 36.7971, 30.1871)	3
<i>Conversions</i>	4
<i>Details</i>	6
<i>Harmonies</i>	12
<i>Previews</i>	24
<i>Color Blindness Simulation</i>	28
<i>CSS Examples</i>	31

Color

**XYZ(40.1233, 36.7971,
30.1871)**

Conversions

Conversions Part 1

Format	Color
Hex	C9988D
RGB	201, 152, 141
RGB Percent	79%, 60%, 55%
CMY	0.2118, 0.4039, 0.4471
CMYK	0.00, 0.24, 0.30, 0.21
HSL	11°, 36%, 67%
HSV	11°, 30%, 79%
XYZ	40.1233, 36.7971, 30.1871
YIQ	165.3970, 32.7350, 6.9670

Conversions

Conversions Part 2

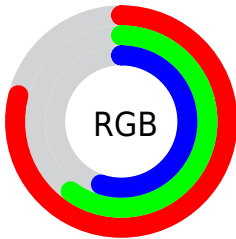
Format	Color
R_{YB}	201, 154, 141
Decimal	13211789
CIE _{Lab}	67.12, 16.78, 12.91
CIE _{LCh}	67, 21.172, 37.560
Yxy	36.7971, 0.3746, 0.3436
Android (android.graphics.Color)	4291401869 (0xFFC9988D)
YUV	165.3970, -12.0277, 31.2238
Hunter-Lab	60.6606, 11.9108, 12.9574

Details

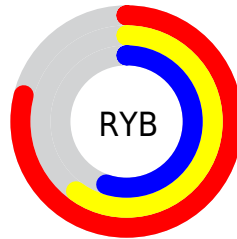
The XYZ color **40.1233, 36.7971, 30.1871** is a light color, and the websafe version is hex **CC9999**. A complement of this color would be **39.9398, 46.7049, 62.1682**, and the grayscale version is **36.0007, 37.8755, 41.2464**.

A 20% lighter version of the original color is **73.1616, 69.3427, 61.1582**, and **18.3961, 16.1737, 12.0498** is the 20% darker color. If you saturate the color by 10%, you get **36.2793, 31.2891, 22.1847**, and if you desaturate by 10%, it is **44.6094, 43.1544, 39.7435**.

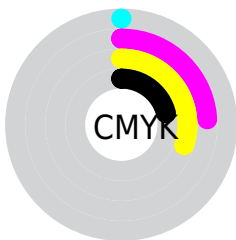
Distribution



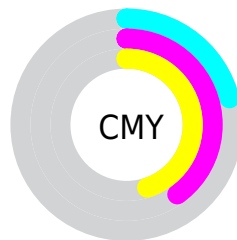
- Red (79%)
- Green (60%)
- Blue (55%)



- Red (79%)
- Yellow (60%)
- Blue (55%)



- Cyan (0%)
- Magenta (24%)
- Yellow (30%)
- Black (21%)





- Cyan (21%)
- Magenta (40%)
- Yellow (45%)

Brightness & Saturation Gradients


These gradients show how the XYZ color 40.1233, 36.7971, 30.1871 changes by changing the brightness by 10 percent. The first figure shows a shift by +10% for each color and the second figure -10%.


Similar to the brightness gradients but the following saturation gradients show a change of the XYZ color 40.1233, 36.7971, 30.1871 by changing the saturation by 10% instead.


 40.1233, 36.7971,
30.1871


 40.1233, 36.7971,
30.1871

337.7685,
332.4312, 317.0100


 27.8193, 25.0504,
19.7274


 74.6344, 70.2606,
61.0224

 18.3293, 16.1146,
12.0149


 97.5722, 92.7463,
82.2351

 11.2878, 9.6053,
6.6312


 124.7854,
119.5803, 107.8693

 6.3295, 5.1381,
3.1576

156.6392,
151.1473, 138.3433

 3.0890, 2.3285,
1.1757

193.4991,
187.8314, 174.0759

 1.2010, 0.7887,
0.0000

235.7303,

 0.1072, 0.0000,

230.0172, 215.4855

0.0000

283.6984,
278.0890, 262.9907

■ 0.0000, 0.0000,
0.0000

■ 40.1233, 36.7971,
30.1871

■ 40.1233, 36.7971,
30.1871

■ 36.2793, 31.2891,
22.1847

■ 44.6094, 43.1544,
39.7435

■ 33.0447, 26.5893,
15.6515

■ 49.7624, 50.3898,
50.9278

■ 30.3883, 22.6609,
10.4983

■ 55.6095, 58.5367,
63.8120

■ 28.2749, 19.4620,
6.6250

■ 62.1752, 67.6257,
78.4632

■ 26.6652, 16.9467,
3.9181

■ 69.4831, 77.6855,
94.9447

■ 25.5144, 15.0637,
2.2435

■ 76.4743, 88.3114,
107.6229

■ 24.7540, 13.7482,
1.3576

■ 77.8974, 91.1575,
108.0973

■ 24.7447, 13.7322,
1.3464

Harmonies

Analogous

The Analogous color harmony consists of three colors that are next to each other on the color wheel.



41.4878, 36.7971, 37.7749



40.1233, 36.7971, 30.1871



37.3950, 36.7971, 25.7927

Triad

The Triadic color harmony groups three colors that are evenly spaced from another and form a triangle on the color wheel.



40.1233, 36.7971, 30.1871



29.5512, 36.7971, 33.6627



35.7966, 36.7971, 60.3716

Complementary

The Complementary color scheme is a pair of colors which are on the opposite of each other on the color wheel.



40.1233, 36.7971, 30.1871



39.9398, 46.7049, 62.1682

Split Complementary

Split-complementary colors differ from the complementary color scheme. The scheme consists of three colors, the original color and two neighbors of the complement color.



32.6608, 36.7971, 58.8207



40.1233, 36.7971, 30.1871



29.1813, 36.7971, 42.4475

Square

The Square scheme is like the rectangle color scheme, but the four colors are evenly spaced on the color wheel.



40.1233, 36.7971, 30.1871



31.3296, 36.7971, 27.5738



30.2862, 36.7971, 51.8940



38.8918, 36.7971, 55.8545

Rectangle

The Rectangle color scheme consists of four colors that form a rectangle on the color wheel.



40.1233, 36.7971, 30.1871



35.2392, 36.7971, 24.8149



30.2862, 36.7971, 51.8940



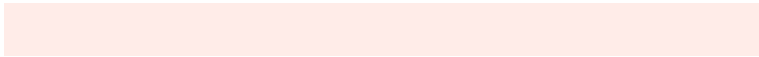
34.7112, 36.7971, 60.5535

Sweetspot

The Sweet Spot groups the original color and five complimentary colors.



40.1243, 36.7988, 30.1878



85.8827, 87.2293, 88.6916



42.9067, 35.1853, 53.2453



18.0854, 18.2552, 18.3338



0.0000, 0.0000, 0.0000



20.3446, 21.4041, 23.3091

Same Dimension

The Same Dimension uses a secret algorithm to generate beautiful new colors.



40.1243, 36.7988, 30.1878



64.1975, 56.5689, 42.2797



45.6232, 47.7966, 32.0208



10.7886, 10.9464, 11.1070



15.6078, 8.7328, 0.8630



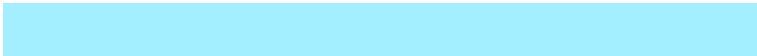
0.7882, 0.5118, 0.0573

Inverse Universe

The Inverse Universe completely reimagines the original color for something new.



39.9398, 46.7049, 62.1682



63.8173, 76.2718, 105.9661



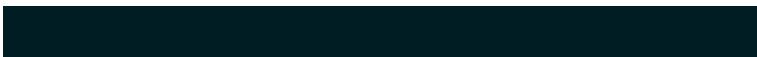
34.0982, 35.0217, 60.2210



10.7749, 11.7239, 13.6125



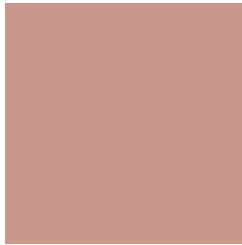
15.0531, 19.5000, 37.7149



0.7570, 1.0118, 1.8005

Previews

White Background



This preview shows how the XYZ color 40.1233, 36.7971, 30.1871 looks on a white background.

Color Contrast Check

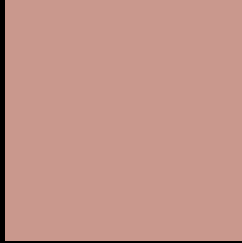
Large Text (above 18pt) WCAG AA × Fail

Any Text WCAG AA × Fail

Large Text (above 18pt) WCAG AAA × Fail

Any Text WCAG AAA × Fail

Black Background



This preview shows how the XYZ color 40.1233, 36.7971, 30.1871 looks on a black background.

Color Contrast Check

Large Text (above 18pt) WCAG AA ✓ Pass

Any Text WCAG AA ✓ Pass

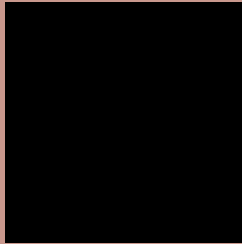
Large Text (above 18pt) WCAG AAA ✓ Pass

Any Text WCAG AAA ✓ Pass

If you want to check with other color combinations, try the [Color Contrast Checker](#).

XYZ 40.1233, 36.7971, 30.1871

Background



This preview shows how black text looks on a background with the XYZ color 40.1233, 36.7971, 30.1871.



This preview shows how white text looks on a background with the XYZ color 40.1233, 36.7971,

Color Blindness Simulation

Color vision deficiency is a very complex topic, and I could not describe the different causes any better than Wikipedia does, so if you want to learn more, you should check out their [article about color blindness](#).

Dichromacy



Original Color

40.1233, 36.7971, 30.1871

Protanopia

35.1582, 36.9589, 32.8845

Deuteranopia

37.6995, 37.0385, 29.9731



Tritanopia

41.8091, 36.7646, 38.6109

Trichromacy



Original Color

40.1233, 36.7971, 30.1871

Protanomaly

36.8004, 36.7857, 31.9488

Deuteranomaly

38.6144, 37.0078, 29.9190

Tritanomaly

41.0962, 36.7023, 35.4901

Monochromacy



Original Color

40.1233, 36.7971, 30.1871

Achromatopsia

35.7637, 37.6262, 40.9749

Achromatomaly

36.9317, 37.0069, 36.6490

CSS Examples

Text

The CSS property to change the color of the text to XYZ 40.1233, 36.7971, 30.1871 is called "color". The color property can be set on classes, ids or directly on the HTML element.

This example shows how text in the color `rgb(201, 152, 141)` looks like.

```
.text, #text, p{  
    color:rgb(201, 152, 141)  
}
```

If you want to add a text shadow in that color use the text-shadow property, you can generate a text shadow directly with our [CSS Text Shadow Generator](#).

Here you see how black text with a 4 pixel rgb(201, 152, 141) colored shadow looks like.

```
.shadow{ text-shadow: 4px 4px 2px rgb(201, 152, 141) }
```

Border

The CSS property to change the border of an element to XYZ 40.1233, 36.7971, 30.1871 is called "border". The border property can be set on classes, ids or directly on the HTML element.

This example shows the color as border, it can be applied via the CSS property "border" or "border-color".

```
.border, #border, table{ border:4px solid rgb(201, 152, 141) }
```


If only the border color should be changed use the property `border-color`.

```
.border{ border-color:rgb(201, 152, 141) }
```

If you want to add a box shadow in that color use:

Here you see how a box with a 4 pixel `rgb(201, 152, 141)` colored shadow looks like.

```
.boxshadow{ -moz-box-shadow:4px 4px 4px  
4px rgb(201, 152, 141); -webkit-box-  
shadow:4px 4px 4px 4px rgb(201, 152, 141);  
box-shadow:4px 4px 4px 4px rgb(201, 152,  
141) }
```

Background

The CSS property to change the background color of an element to XYZ 40.1233, 36.7971, 30.1871 is called "background". The background property can be set on classes, ids or directly on the HTML element.

```
.background, #background, body{  
background: rgb(201, 152, 141) }
```

If only the background color should be changed can be used:

```
.background{ background-color: rgb(201,  
152, 141) }
```

This example shows the color as background, it is applied via the CSS property "background".

To optimize and compress your CSS code, you can use our [online CSS compressor and optimizer](#) based on csstidy. If you want to create a linear or radial gradient as background or border, check our [CSS Gradient Generator](#).

Hey! You found this booklet interesting? Support Converting Colors with the new Membership Option!

The pro membership hides all ads, plus gives you double the colors in the color bucket, and more awesome pro features!

[Learn more, Memberships starting at \\$2.50/m!](#)

**Follow me
on Twitter!**

@ConvertingColor