

# Converting Colors

XYZ(40.3188, 26.5415, 18.2976)

Have a look what the booklet for  
XYZ(40.3188, 26.5415, 18.2976)  
contains.

<b>XYZ(40.2956, 26.5101, 18.3224)</b> .....	3
<i><b>Conversions</b></i> .....	4
<i><b>Details</b></i> .....	6
<i><b>Harmonies</b></i> .....	12
<i><b>Previews</b></i> .....	24
<i><b>Color Blindness Simulation</b></i> .....	28
<i><b>CSS Examples</b></i> .....	31

# Color

**XYZ(40.2956, 26.5101,  
18.3224)**

# Conversions

## Conversions Part 1

<b>Format</b>	<b>Color</b>
Hex	E85F70
RGB	232, 95, 112
RGB Percent	91%, 37%, 44%
CMY	0.0902, 0.6274, 0.5608
CMYK	0.00, 0.59, 0.52, 0.09
HSL	353°, 75%, 64%
HSV	353°, 59%, 91%
XYZ	40.2956, 26.5101, 18.3224
YIQ	137.9010, 76.1950, 34.3310

# Conversions

## Conversions Part 2

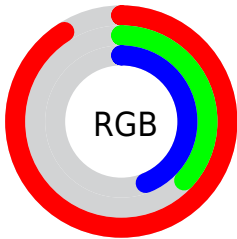
<b>Format</b>	<b>Color</b>
<b>R<sub>YB</sub></b>	232, 95, 112
Decimal	15228784
CIE Lab	58.52, 54.42, 18.06
CIE LCh	59, 57.336, 18.362
Yxy	26.5101, 0.4734, 0.3114
Android (android.graphics.Color)	4293418864 (0xFFE85F70)
YUV	137.9010, -12.7692, 82.5248
Hunter-Lab	51.4880, 49.5941, 14.9428

# Details

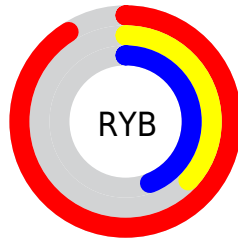
The XYZ color **40.2956, 26.5101, 18.3224** is a dark color, and the websafe version is hex **FF6666**. The color can be described as middle muted rose. A complement of this color would be **45.8434, 65.0531, 74.4352**, and the grayscale version is **24.1476, 25.4051, 27.6662**.

A 20% lighter version of the original color is **58.8472, 45.7530, 40.8516**, and **18.4103, 10.3627, 6.0309** is the 20% darker color. If you saturate the color by 10%, you get **37.5014, 22.5328, 12.4244**, and if you desaturate by 10%, it is **43.9686, 31.8365, 25.7735**.

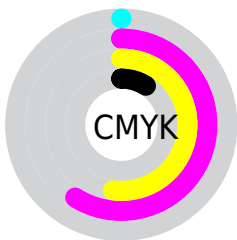
# Distribution



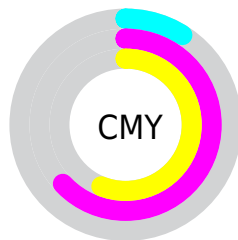
- Red (91%)
- Green (37%)
- Blue (44%)



- Red (91%)
- Yellow (37%)
- Blue (44%)



- Cyan (0%)
- Magenta (59%)
- Yellow (52%)
- Black (9%)



- Cyan (9%)
- Magenta (63%)
- Yellow (56%)

# Brightness & Saturation Gradients

These gradients show how the XYZ color 40.2956, 26.5101, 18.3224 changes by changing the brightness by 10 percent. The first figure shows a shift by +10% for each color and the second figure -10%.

Similar to the brightness gradients but the following saturation gradients show a change of the XYZ color 40.2956, 26.5101, 18.3224 by changing the saturation by 10% instead.



40.2956, 26.5101,  
18.3224

40.2956, 26.5101,  
18.3224

338.4810,  
285.2772, 254.9789

27.9543, 17.2056,  
11.0099

74.8949, 54.0967,  
41.4073

18.4315, 10.3812,  
5.9592

97.8837, 73.1477,  
58.0167

11.3618, 5.6524,  
2.7519

125.1523, 96.2163,  
78.5621

6.3798, 2.6349,  
0.9694

157.0662,  
123.6868, 103.4621

3.1202, 0.9442,  
0.0000

193.9906,  
155.9438, 133.1353

1.2177, 0.0000,  
0.0000

236.2910,

0.1202, 0.0000,

193.3716, 168.0001

0.0000

284.3327,  
236.3546, 208.4751

■ 0.0000, 0.0000,  
0.0000

■ 40.2956, 26.5101,  
18.3224

■ 40.2956, 26.5101,  
18.3224

■ 37.5014, 22.5328,  
12.4244

■ 43.9686, 31.8365,  
25.7735

■ 35.5094, 19.7793,  
7.9676

■ 48.5843, 38.6143,  
34.8762

■ 34.2334, 18.1079,  
4.8268

■ 54.2029, 46.9408,  
45.7223

■ 33.5461, 17.3011,  
2.8479

■ 60.8789, 56.9035,  
58.3965

■ 33.4977, 17.2434,  
2.7108

■ 68.6630, 68.5836,  
72.9778

■ 77.6026, 82.0567,  
89.5408

■ 86.9691, 95.8480,  
107.8981

■ 87.0886, 95.8958,  
108.5274

# Harmonies

## Analogous

The Analogous color harmony consists of three colors that are next to each other on the color wheel.



40.8584, 26.5101, 37.3833



40.2956, 26.5101, 18.3224



35.2677, 26.5101, 8.5454

# Triad

The Triadic color harmony groups three colors that are evenly spaced from another and form a triangle on the color wheel.



40.2956, 26.5101, 18.3224



16.3981, 26.5101, 10.0497



22.5719, 26.5101, 85.6689

# Complementary

The Complementary color scheme is a pair of colors which are on the opposite of each other on the color wheel.



40.2956, 26.5101, 18.3224



45.8434, 65.0531, 74.4352

# Split Complementary

Split-complementary colors differ from the complementary color scheme. The scheme consists of three colors, the original color and two neighbors of the complement color.



17.2530, 26.5101, 68.4494



40.2956, 26.5101, 18.3224



14.1570, 26.5101, 21.7503

# Square

The Square scheme is like the rectangle color scheme, but the four colors are evenly spaced on the color wheel.



40.2956, 26.5101, 18.3224



21.1809, 26.5101, 5.5294



14.4377, 26.5101, 42.8305



29.6913, 26.5101, 83.2687



# Rectangle

The Rectangle color scheme consists of four colors that form a rectangle on the color wheel.



40.2956, 26.5101, 18.3224



30.5073, 26.5101, 5.7842



14.4377, 26.5101, 42.8305



20.5418, 26.5101, 81.7471

# Sweetspot

The Sweet Spot groups the original color and five complimentary colors.



40.2963, 26.5115, 18.3229



76.3042, 71.8057, 73.9891



46.3125, 28.2683, 79.3591



15.7763, 14.5376, 14.7879



0.0000, 0.0000, 0.0000



20.3446, 21.4041, 23.3091



# Same Dimension

The Same Dimension uses a secret algorithm to generate beautiful new colors.



40.2963, 26.5115, 18.3229



45.8156, 27.0029, 13.9623



45.5065, 38.3059, 15.8238



14.4494, 14.3969, 15.3008



18.6212, 9.5827, 1.6344



1.3999, 0.7177, 0.2464



# Inverse Universe

The Inverse Universe completely reimagines the original color for something new.



40.2963, 26.5115, 18.3229



45.8156, 27.0029, 13.9623



35.9664, 41.6211, 82.4818



14.4494, 14.3969, 15.3008



18.6212, 9.5827, 1.6344



1.3999, 0.7177, 0.2464



# Previews

## White Background



This preview shows how the XYZ color 40.2956, 26.5101, 18.3224 looks on a white background.

## Color Contrast Check

Large Text (above 18pt) WCAG AA ✓ Pass

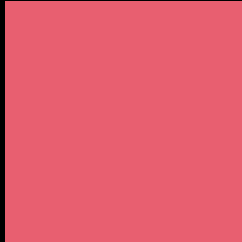
Any Text WCAG AA × Fail

Large Text (above 18pt) WCAG AAA × Fail

Any Text WCAG AAA × Fail



# Black Background



This preview shows how the XYZ color 40.2956, 26.5101, 18.3224 looks on a black background.

## Color Contrast Check

Large Text (above 18pt) WCAG AA ✓ Pass

Any Text WCAG AA ✓ Pass

Large Text (above 18pt) WCAG AAA ✓ Pass

Any Text WCAG AAA × Fail

If you want to check with other color combinations, try the [Color Contrast Checker](#).

**XYZ 40.2956, 26.5101, 18.3224**

## **Background**



This preview shows how black text looks on a background with the XYZ color 40.2956, 26.5101, 18.3224.



This preview shows how white text looks on a background with the XYZ color 40.2956, 26.5101,



# Color Blindness Simulation

Color vision deficiency is a very complex topic, and I could not describe the different causes any better than Wikipedia does, so if you want to learn more, you should check out their [article about color blindness](#).

## Dichromacy



### Original Color

40.2956, 26.5101, 18.3224

### Protanopia

25.5751, 26.8188, 26.7503

### Deuteranopia

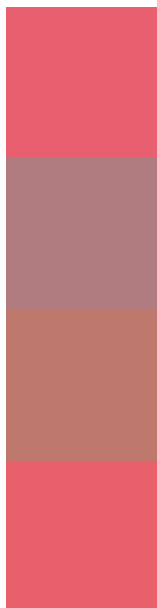
26.9914, 26.4755, 17.3234



## Tritanopia

39.6779, 26.5176, 15.8591

# Trichromacy



## Original Color

40.2956, 26.5101, 18.3224

## Protanomaly

29.1699, 25.2947, 23.4236

## Deuteranomaly

30.6584, 25.4628, 17.4863

## Tritanomaly

39.7394, 26.3953, 16.6360

# Monochromacy



## Original Color

40.2956, 26.5101, 18.3224

## Achromatopsia

24.1572, 25.4152, 27.6772

## Achromatomaly

27.9352, 24.2747, 23.9820

# CSS Examples

## Text

The CSS property to change the color of the text to XYZ 40.2956, 26.5101, 18.3224 is called "color". The color property can be set on classes, ids or directly on the HTML element.

This example shows how text in the color `rgb(232, 95, 112)` looks like.

```
.text, #text, p{  
    color:rgb(232, 95, 112)  
}
```

If you want to add a text shadow in that color use the text-shadow property, you can generate a text shadow directly with our [CSS Text Shadow Generator](#).

Here you see how black text with a 4 pixel rgb(232, 95, 112) colored shadow looks like.

```
.shadow{ text-shadow: 4px 4px 2px rgb(232, 95, 112) }
```

## Border

The CSS property to change the border of an element to XYZ 40.2956, 26.5101, 18.3224 is called "border". The border property can be set on classes, ids or directly on the HTML element.

This example shows the color as border, it can be applied via the CSS property "border" or "border-color".

```
.border, #border, table{ border:4px solid rgb(232, 95, 112) }
```



If only the border color should be changed use the property `border-color`.

```
.border{ border-color:rgb(232, 95, 112) }
```

If you want to add a box shadow in that color use:

Here you see how a box with a 4 pixel `rgb(232, 95, 112)` colored shadow looks like.

```
.boxshadow{ -moz-box-shadow:4px 4px 4px  
4px rgb(232, 95, 112); -webkit-box-  
shadow:4px 4px 4px 4px rgb(232, 95, 112);  
box-shadow:4px 4px 4px 4px rgb(232, 95,  
112) }
```

# Background

The CSS property to change the background color of an element to XYZ 40.2956, 26.5101, 18.3224 is called "background". The background property can be set on classes, ids or directly on the HTML element.

```
.background, #background, body{  
background: rgb(232, 95, 112) }
```

If only the background color should be changed can be used:

```
.background{ background-color: rgb(232, 95,  
112) }
```

This example shows the color as background, it is applied via the CSS property "background".

To optimize and compress your CSS code, you can use our [online CSS compressor and optimizer](#) based on csstidy. If you want to create a linear or radial gradient as background or border, check our [CSS Gradient Generator](#).

Hey! You found this booklet interesting? Support Converting Colors with the new Membership Option!

The pro membership hides all ads, plus gives you double the colors in the color bucket, and more awesome pro features!

**[Learn more, Memberships starting at \\$2.50/m!](#)**

**Follow me  
on Twitter!**

@ConvertingColor