

Converting Colors

XYZ(40.4744, 36.1705, 32.1867)

Have a look what the booklet for
XYZ(40.4744, 36.1705, 32.1867)
contains.

XYZ(40.5644, 36.2667, 32.0563)	3
<i>Conversions</i>	4
<i>Details</i>	6
<i>Harmonies</i>	12
<i>Previews</i>	24
<i>Color Blindness Simulation</i>	28
<i>CSS Examples</i>	31

Color

**XYZ(40.5644, 36.2667,
32.0563)**

Conversions

Conversions Part 1

Format	Color
Hex	CB9592
RGB	203, 149, 146
RGB Percent	80%, 58%, 57%
CMY	0.2039, 0.4157, 0.4274
CMYK	0.00, 0.27, 0.28, 0.20
HSL	3°, 35%, 68%
HSV	3°, 28%, 80%
XYZ	40.5644, 36.2667, 32.0563
YIQ	164.8040, 33.1470, 10.5150

Conversions

Conversions Part 2

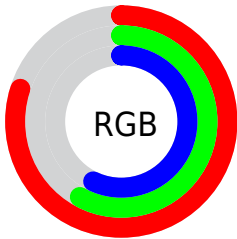
Format	Color
RYB	203, 149, 146
Decimal	13342098
CIELab	66.72, 19.88, 9.58
CIElCh	67, 22.069, 25.717
Yxy	36.2667, 0.3725, 0.3331
Android (android.graphics.Color)	4291532178 (0xFFCB9592)
YUV	164.8040, -9.2704, 33.4979
Hunter-Lab	60.2218, 14.8463, 10.5950

Details

The XYZ color **40.5644, 36.2667, 32.0563** is a light color, and the websafe version is hex **CC9999**. A complement of this color would be **43.2873, 51.7299, 64.2037**, and the grayscale version is **35.7030, 37.5623, 40.9053**.

A 20% lighter version of the original color is **73.0213, 68.1420, 63.9477**, and **18.6917, 15.8758, 13.1455** is the 20% darker color. If you saturate the color by 10%, you get **36.3281, 30.1006, 23.5330**, and if you desaturate by 10%, it is **45.5854, 43.5530, 42.2253**.

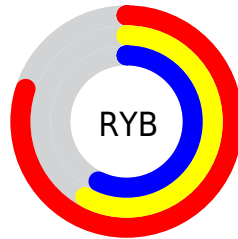
Distribution



Red (80%)

Green (58%)

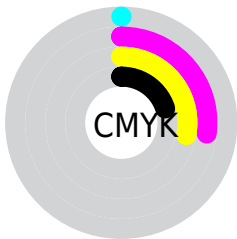
Blue (57%)



Red (80%)

Yellow (58%)

Blue (57%)

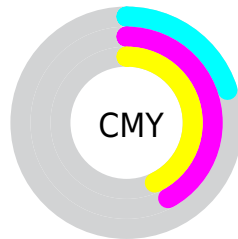


Cyan (0%)

Magenta (27%)

Yellow (28%)

Black (20%)



Cyan (20%)


Magenta (42%)


Yellow (43%)

Brightness & Saturation Gradients


These gradients show how the XYZ color 40.5644, 36.2667, 32.0563 changes by changing the brightness by 10 percent. The first figure shows a shift by +10% for each color and the second figure -10%.


Similar to the brightness gradients but the following saturation gradients show a change of the XYZ color 40.5644, 36.2667, 32.0563 by changing the saturation by 10% instead.


 40.5644, 36.2667,
32.0563


 40.5644, 36.2667,
32.0563

339.5905,
330.1247, 325.8763

 28.1650, 24.6402,
21.1393

 75.3011, 69.4435,
63.9983

 18.5912, 15.8092,
13.0337


 98.3691, 91.7627,
85.8604

 11.4775, 9.3893,
7.3207


125.7241,
118.4148, 112.2079

 6.4586, 4.9959,
3.5820

157.7314,
149.7844, 143.4594

 3.1692, 2.2449,
1.3990

194.7563,
186.2558, 180.0335

 1.2439, 0.7443,
0.1409

237.1642,

 0.1406, 0.0000,

228.2134, 222.3486

0.0000

285.3205,
276.0416, 270.8234

■ 0.0000, 0.0000,
0.0000

■ 40.5644, 36.2667,
32.0563

■ 40.5644, 36.2667,
32.0563

■ 36.3281, 30.1006,
23.5330

■ 45.5854, 43.5530,
42.2253

■ 32.8341, 24.9945,
16.5668

■ 51.4250, 52.0058,
54.1179

■ 30.0405, 20.8901,
11.0642

■ 58.1183, 61.6751,
67.8095

■ 27.8999, 17.7215,
6.9209

■ 65.6979, 72.6062,
83.3705

■ 26.3593, 15.4151,
4.0187

■ 74.1944, 84.8423,
100.8676

■ 25.3570, 13.8860,
2.2189

■ 78.4388, 91.4366,
108.1226

■ 24.8125, 13.0299,
1.3193

■ 24.7450, 12.9291,
1.1914

Harmonies

Analogous

The Analogous color harmony consists of three colors that are next to each other on the color wheel.



41.2550, 36.2667, 40.8731



40.5644, 36.2667, 32.0563



38.2028, 36.2667, 26.1964

Triad

The Triadic color harmony groups three colors that are evenly spaced from another and form a triangle on the color wheel.



40.5644, 36.2667, 32.0563



29.4478, 36.2667, 30.0369



33.9946, 36.2667, 60.7330

Complementary

The Complementary color scheme is a pair of colors which are on the opposite of each other on the color wheel.



40.5644, 36.2667, 32.0563



43.2873, 51.7299, 64.2037

Split Complementary

Split-complementary colors differ from the complementary color scheme. The scheme consists of three colors, the original color and two neighbors of the complement color.



30.9894, 36.2667, 56.6530



40.5644, 36.2667, 32.0563



28.4737, 36.2667, 38.1351

Square

The Square scheme is like the rectangle color scheme, but the four colors are evenly spaced on the color wheel.



40.5644, 36.2667, 32.0563



31.7670, 36.2667, 25.1688



29.0195, 36.2667, 47.9884



37.3230, 36.2667, 58.4122

Rectangle

The Rectangle color scheme consists of four colors that form a rectangle on the color wheel.



40.5644, 36.2667, 32.0563



36.0737, 36.2667, 24.2550



29.0195, 36.2667, 47.9884



32.9154, 36.2667, 60.0489

Sweetspot

The Sweet Spot groups the original color and five complimentary colors.



40.5654, 36.2684, 32.0570



86.0796, 87.0390, 90.5579



45.3507, 37.4319, 59.5707



18.0862, 18.1405, 18.6926



0.0000, 0.0000, 0.0000



20.3446, 21.4041, 23.3091

Same Dimension

The Same Dimension uses a secret algorithm to generate beautiful new colors.



40.5654, 36.2684, 32.0570



63.2544, 53.9353, 44.2692



45.6087, 46.3550, 33.7381



11.2590, 11.3069, 11.6685



15.7683, 8.2696, 0.7651



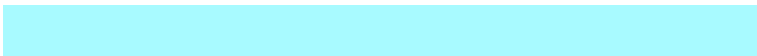
0.8305, 0.4606, 0.0451

Inverse Universe

The Inverse Universe completely reimagines the original color for something new.



43.2873, 51.7299, 64.2037



68.5821, 84.2171, 107.2486



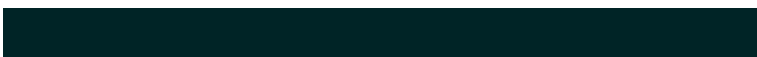
37.3200, 39.7952, 62.2145



11.4907, 12.6218, 14.4010



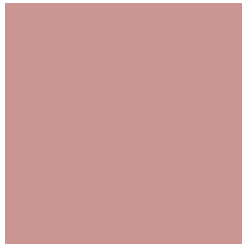
18.9195, 26.8630, 40.1442



0.9919, 1.4175, 2.0763

Previews

White Background



This preview shows how the XYZ color 40.5644, 36.2667, 32.0563 looks on a white background.

Color Contrast Check

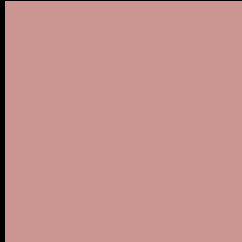
Large Text (above 18pt) WCAG AA × Fail

Any Text WCAG AA × Fail

Large Text (above 18pt) WCAG AAA × Fail

Any Text WCAG AAA × Fail

Black Background



This preview shows how the XYZ color 40.5644, 36.2667, 32.0563 looks on a black background.

Color Contrast Check

Large Text (above 18pt) WCAG AA ✓ Pass

Any Text WCAG AA ✓ Pass

Large Text (above 18pt) WCAG AAA ✓ Pass

Any Text WCAG AAA ✓ Pass

If you want to check with other color combinations, try the [Color Contrast Checker](#).

XYZ 40.5644, 36.2667, 32.0563

Background



This preview shows how black text looks on a background with the XYZ color 40.5644, 36.2667, 32.0563.



This preview shows how white text looks on a background with the XYZ color 40.5644, 36.2667,

Color Blindness Simulation

Color vision deficiency is a very complex topic, and I could not describe the different causes any better than Wikipedia does, so if you want to learn more, you should check out their [article about color blindness](#).

Dichromacy



Original Color

40.5644, 36.2667, 32.0563

Protanopia

34.8185, 36.4654, 35.3404

Deuteranopia

37.1754, 36.4726, 31.8686



Tritanopia

41.5071, 36.1734, 37.1423

Trichromacy



Original Color

40.5644, 36.2667, 32.0563

Protanomaly

36.6180, 36.1397, 33.8998

Deuteranomaly

38.4047, 36.3620, 31.7825

Tritanomaly

41.3245, 36.3503, 35.4101

Monochromacy



Original Color

40.5644, 36.2667, 32.0563

Achromatopsia

35.7637, 37.6262, 40.9749

Achromatomaly

37.1601, 36.8486, 37.5017

CSS Examples

Text

The CSS property to change the color of the text to XYZ 40.5644, 36.2667, 32.0563 is called "color". The color property can be set on classes, ids or directly on the HTML element.

This example shows how text in the color `rgb(203, 149, 146)` looks like.

```
.text, #text, p{  
    color:rgb(203, 149, 146)  
}
```

If you want to add a text shadow in that color use the text-shadow property, you can generate a text shadow directly with our [CSS Text Shadow Generator](#).

Here you see how black text with a 4 pixel rgb(203, 149, 146) colored shadow looks like.

```
.shadow{ text-shadow: 4px 4px 2px rgb(203, 149, 146) }
```

Border

The CSS property to change the border of an element to XYZ 40.5644, 36.2667, 32.0563 is called "border". The border property can be set on classes, ids or directly on the HTML element.

This example shows the color as border, it can be applied via the CSS property "border" or "border-color".

```
.border, #border, table{ border:4px solid rgb(203, 149, 146) }
```


If only the border color should be changed use the property `border-color`.

```
.border{ border-color:rgb(203, 149, 146) }
```

If you want to add a box shadow in that color use:

Here you see how a box with a 4 pixel `rgb(203, 149, 146)` colored shadow looks like.

```
.boxshadow{ -moz-box-shadow:4px 4px 4px 4px rgb(203, 149, 146); -webkit-box-shadow:4px 4px 4px 4px rgb(203, 149, 146); box-shadow:4px 4px 4px 4px rgb(203, 149, 146) }
```

Background

The CSS property to change the background color of an element to XYZ 40.5644, 36.2667, 32.0563 is called "background". The background property can be set on classes, ids or directly on the HTML element.

```
.background, #background, body{  
background: rgb(203, 149, 146) }
```

If only the background color should be changed can be used:

```
.background{ background-color: rgb(203,  
149, 146) }
```

This example shows the color as background, it is applied via the CSS property "background".

To optimize and compress your CSS code, you can use our [online CSS compressor and optimizer](#) based on csstidy. If you want to create a linear or radial gradient as background or border, check our [CSS Gradient Generator](#).

Hey! You found this booklet interesting? Support Converting Colors with the new Membership Option!

The pro membership hides all ads, plus gives you double the colors in the color bucket, and more awesome pro features!

[Learn more, Memberships starting at \\$2.50/m!](#)

**Follow me
on Twitter!**

@ConvertingColor