

Converting Colors

XYZ(40.5777, 39.3856, 37.8113)

Have a look what the booklet for
XYZ(40.5777, 39.3856, 37.8113)
contains.

XYZ(40.5777, 39.3856, 37.8113)	3
<i>Conversions</i>	4
<i>Details</i>	6
<i>Harmonies</i>	12
<i>Previews</i>	24
<i>Color Blindness Simulation</i>	28
<i>CSS Examples</i>	31

Color

**XYZ(40.5777, 39.3856,
37.8113)**

Conversions

Conversions Part 1

Format	Color
Hex	BFA29E
RGB	191, 162, 158
RGB Percent	75%, 64%, 62%
CMY	0.2510, 0.3647, 0.3804
CMYK	0.00, 0.15, 0.17, 0.25
HSL	7°, 20%, 68%
HSV	7°, 17%, 75%
XYZ	40.5777, 39.3856, 37.8113
YIQ	170.2150, 18.5680, 4.9040

Conversions

Conversions Part 2

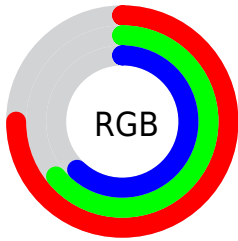
Format	Color
R_{YB}	191, 163, 158
Decimal	12559006
CIE _{Lab}	69.03, 9.98, 6.02
CIE _{LCh}	69, 11.660, 31.113
Yxy	39.3856, 0.3445, 0.3344
Android (android.graphics.Color)	4290749086 (0xFFBFA29E)
YUV	170.2150, -6.0220, 18.2284
Hunter-Lab	62.7579, 5.5872, 8.2087

Details

The XYZ color **40.5777, 39.3856, 37.8113** is a light color, and the websafe version is hex **CC9999**. A complement of this color would be **41.2745, 46.5703, 56.1040**, and the grayscale version is **38.3392, 40.3358, 43.9257**.

A 20% lighter version of the original color is **75.5345, 74.3863, 73.3277**, and **18.5463, 17.5318, 16.3164** is the 20% darker color. If you saturate the color by 10%, you get **36.2983, 33.2562, 28.8943**, and if you desaturate by 10%, it is **45.5094, 46.4099, 48.2073**.

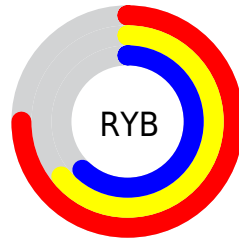
Distribution



Red (75%)

Green (64%)

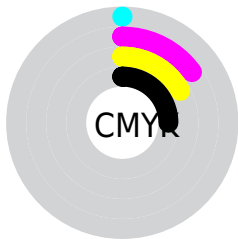
Blue (62%)



Red (75%)

Yellow (64%)

Blue (62%)

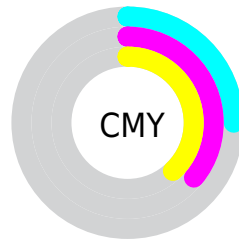


Cyan (0%)

Magenta (15%)

Yellow (17%)

Black (25%)



Cyan (25%)

Magenta (36%)

Yellow (38%)

Brightness & Saturation Gradients


These gradients show how the XYZ color 40.5777, 39.3856, 37.8113 changes by changing the brightness by 10 percent. The first figure shows a shift by +10% for each color and the second figure -10%.

Similar to the brightness gradients but the following saturation gradients show a change of the XYZ color 40.5777, 39.3856, 37.8113 by changing the saturation by 10% instead.


 40.5777, 39.3856,
37.8113


 40.5777, 39.3856,
37.8113


339.6453,
343.5271, 352.0837

 28.1755, 27.0598,
25.5356

 75.3212, 74.2270,
73.0190

 18.5991, 17.6182,
16.2539


 98.3931, 97.5115,
96.7881

 11.4832, 10.6762,
9.5477


125.7524,
125.2176, 125.2254

 6.4625, 5.8495,
4.9984

157.7643,
157.7298, 158.7494

 3.1716, 2.7538,
2.1876

194.7941,
195.4324, 197.7787

 1.2452, 1.0046,
0.6672

237.2074,

 0.1416, 0.0000,

238.7099, 242.7318

0.0000

285.3693,
287.9467, 294.0273

■ 0.0000, 0.0000,
0.0000

■ 40.5777, 39.3856,
37.8113

■ 40.5777, 39.3856,
37.8113

■ 36.2983, 33.2562,
28.8943

■ 45.5094, 46.4099,
48.2073

■ 32.6406, 27.9807,
21.3866

■ 51.1159, 54.3575,
60.1428

■ 29.5766, 23.5227,
15.2168

■ 57.4224, 63.2621,
73.6776

■ 27.0746, 19.8411,
10.3060

■ 64.4520, 73.1541,
88.8678

■ 25.1001, 16.8913,
6.5673

■ 72.2268, 84.0627,
105.7669

■ 23.6146, 14.6242,
3.9024

■ 75.2960, 89.8164,
107.9755

■ 22.5743, 12.9843,
2.1971

■ 21.9236, 11.9061,
1.2920

■ 21.7958, 11.6960,
1.1088

Harmonies

Analogous

The Analogous color harmony consists of three colors that are next to each other on the color wheel.



41.1217, 39.3856, 42.6857



40.5777, 39.3856, 37.8113



39.1874, 39.3856, 34.5346

Triad

The Triadic color harmony groups three colors that are evenly spaced from another and form a triangle on the color wheel.



40.5777, 39.3856, 37.8113



34.3929, 39.3856, 38.1288



37.5043, 39.3856, 53.9494

Complementary

The Complementary color scheme is a pair of colors which are on the opposite of each other on the color wheel.



40.5777, 39.3856, 37.8113



41.2745, 46.5703, 56.1040

Split Complementary

Split-complementary colors differ from the complementary color scheme. The scheme consists of three colors, the original color and two neighbors of the complement color.



35.7353, 39.3856, 52.4815



40.5777, 39.3856, 37.8113



33.9752, 39.3856, 43.0833

Square

The Square scheme is like the rectangle color scheme, but the four colors are evenly spaced on the color wheel.



40.5777, 39.3856, 37.8113



35.6189, 39.3856, 34.7070



34.4586, 39.3856, 48.3917



39.3115, 39.3856, 52.2544

Rectangle

The Rectangle color scheme consists of four colors that form a rectangle on the color wheel.



40.5777, 39.3856, 37.8113



37.9895, 39.3856, 33.5485



34.4586, 39.3856, 48.3917



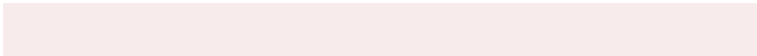
36.8856, 39.3856, 53.8086

Sweetspot

The Sweet Spot groups the original color and five complimentary colors.



40.5788, 39.3874, 37.8121



83.6089, 86.1043, 90.7971



42.6988, 39.1249, 52.3996



18.2089, 18.6937, 19.6181



92.9021, 97.7402, 106.4391



19.4759, 20.4902, 22.3138

Same Dimension

The Same Dimension uses a secret algorithm to generate beautiful new colors.



40.5788, 39.3874, 37.8121



69.4298, 65.9006, 60.9318



43.6479, 45.5257, 38.8352



9.6209, 9.7179, 9.9453



14.3562, 7.7511, 0.7395



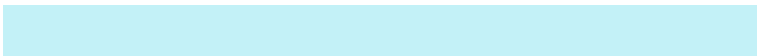
0.5934, 0.3657, 0.0393

Inverse Universe

The Inverse Universe completely reimagines the original color for something new.



41.2745, 46.5703, 56.1040



70.9231, 81.3326, 100.2399



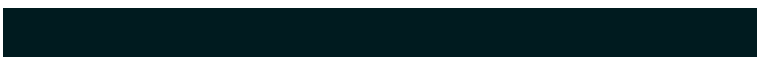
38.0019, 40.0250, 55.0132



9.7071, 10.6066, 12.2079



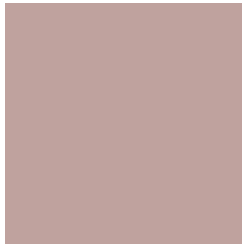
15.4012, 20.9142, 35.6180



0.6314, 0.8756, 1.4046

Previews

White Background



This preview shows how the XYZ color 40.5777, 39.3856, 37.8113 looks on a white background.

Color Contrast Check

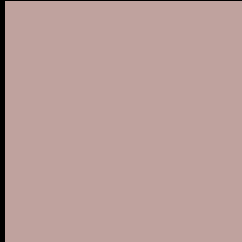
Large Text (above 18pt) WCAG AA × Fail

Any Text WCAG AA × Fail

Large Text (above 18pt) WCAG AAA × Fail

Any Text WCAG AAA × Fail

Black Background



This preview shows how the XYZ color 40.5777, 39.3856, 37.8113 looks on a black background.

Color Contrast Check

Large Text (above 18pt) WCAG AA ✓ Pass

Any Text WCAG AA ✓ Pass

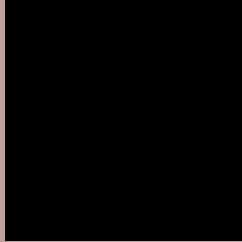
Large Text (above 18pt) WCAG AAA ✓ Pass

Any Text WCAG AAA ✓ Pass

If you want to check with other color combinations, try the [Color Contrast Checker](#).

XYZ 40.5777, 39.3856, 37.8113

Background



This preview shows how black text looks on a background with the XYZ color 40.5777, 39.3856, 37.8113.



This preview shows how white text looks on a background with the XYZ color 40.5777, 39.3856,

Color Blindness Simulation

Color vision deficiency is a very complex topic, and I could not describe the different causes any better than Wikipedia does, so if you want to learn more, you should check out their [article about color blindness](#).

Dichromacy



Original Color

40.5777, 39.3856, 37.8113

Protanopia

37.6692, 39.4627, 39.3499

Deuteranopia

40.2550, 39.4818, 37.8468



Tritanopia

42.0095, 39.4576, 44.4317

Trichromacy



Original Color

40.5777, 39.3856, 37.8113

Protanomaly

38.8038, 39.5138, 38.8395

Deuteranomaly

40.5040, 39.6102, 37.8585

Tritanomaly

41.4581, 39.4862, 41.9957

Monochromacy



Original Color

40.5777, 39.3856, 37.8113

Achromatopsia

38.2080, 40.1978, 43.7754

Achromatomaly

39.0617, 39.8556, 41.7105

CSS Examples

Text

The CSS property to change the color of the text to XYZ 40.5777, 39.3856, 37.8113 is called "color". The color property can be set on classes, ids or directly on the HTML element.

This example shows how text in the color `rgb(191, 162, 158)` looks like.

```
.text, #text, p{  
    color:rgb(191, 162, 158)  
}
```

If you want to add a text shadow in that color use the text-shadow property, you can generate a text shadow directly with our [CSS Text Shadow Generator](#).

Here you see how black text with a 4 pixel rgb(191, 162, 158) colored shadow looks like.

```
.shadow{ text-shadow: 4px 4px 2px rgb(191, 162, 158) }
```

Border

The CSS property to change the border of an element to XYZ 40.5777, 39.3856, 37.8113 is called "border". The border property can be set on classes, ids or directly on the HTML element.

This example shows the color as border, it can be applied via the CSS property "border" or "border-color".

```
.border, #border, table{ border:4px solid rgb(191, 162, 158) }
```


If only the border color should be changed use the property `border-color`.

```
.border{ border-color:rgb(191, 162, 158) }
```

If you want to add a box shadow in that color use:

Here you see how a box with a 4 pixel `rgb(191, 162, 158)` colored shadow looks like.

```
.boxshadow{ -moz-box-shadow:4px 4px 4px  
4px rgb(191, 162, 158); -webkit-box-  
shadow:4px 4px 4px 4px rgb(191, 162, 158);  
box-shadow:4px 4px 4px 4px rgb(191, 162,  
158) }
```

Background

The CSS property to change the background color of an element to XYZ 40.5777, 39.3856, 37.8113 is called "background". The background property can be set on classes, ids or directly on the HTML element.

```
.background, #background, body{  
background: rgb(191, 162, 158) }
```

If only the background color should be changed can be used:

```
.background{ background-color: rgb(191,  
162, 158) }
```

This example shows the color as background, it is applied via the CSS property "background".

To optimize and compress your CSS code, you can use our [online CSS compressor and optimizer](#) based on csstidy. If you want to create a linear or radial gradient as background or border, check our [CSS Gradient Generator](#).

Hey! You found this booklet interesting? Support Converting Colors with the new Membership Option!

The pro membership hides all ads, plus gives you double the colors in the color bucket, and more awesome pro features!

[Learn more, Memberships starting at \\$2.50/m!](#)

**Follow me
on Twitter!**

@ConvertingColor