

# Converting Colors

XYZ(40.6535, 36.0465, 30.3998)

Have a look what the booklet for  
XYZ(40.6535, 36.0465, 30.3998)  
contains.

<b>XYZ(40.6492, 36.1119, 30.4190)</b> .....	3
<i><b>Conversions</b></i> .....	4
<i><b>Details</b></i> .....	6
<i><b>Harmonies</b></i> .....	12
<i><b>Previews</b></i> .....	24
<i><b>Color Blindness Simulation</b></i> .....	28
<i><b>CSS Examples</b></i> .....	31

# Color

**XYZ(40.6492, 36.1119,  
30.4190)**

# Conversions

## Conversions Part 1

<b>Format</b>	<b>Color</b>
Hex	CD948E
RGB	205, 148, 142
RGB Percent	80%, 58%, 56%
CMY	0.1961, 0.4196, 0.4431
CMYK	0.00, 0.28, 0.31, 0.20
HSL	6°, 39%, 68%
HSV	6°, 31%, 80%
XYZ	40.6492, 36.1119, 30.4190
YIQ	164.3590, 35.8980, 10.2180

# Conversions

## Conversions Part 2

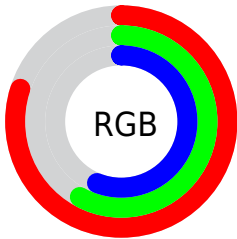
Format	Color
R <sub>Y</sub> B	205, 149, 142
Decimal	13472910
CIE Lab	66.61, 20.65, 11.68
CIE LCh	67, 23.726, 29.485
Yxy	36.1119, 0.3793, 0.3369
Android (android.graphics.Color)	4291662990 (0xFFCD948E)
YUV	164.3590, -11.0230, 35.6422
Hunter-Lab	60.0932, 15.5808, 12.0528

# Details

The XYZ color **40.6492, 36.1119, 30.4190** is a light color, and the websafe version is hex **CC9999**. A complement of this color would be **42.5975, 51.0037, 65.3573**, and the grayscale version is **35.4973, 37.3460, 40.6698**.

A 20% lighter version of the original color is **72.3243, 67.4866, 61.4389**, and **18.6009, 15.7117, 12.1775** is the 20% darker color. If you saturate the color by 10%, you get **36.5697, 30.1936, 22.1512**, and if you desaturate by 10%, it is **45.4798, 43.0790, 40.3344**.

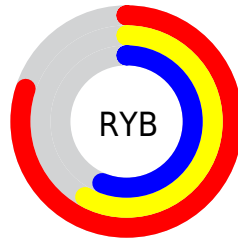
# Distribution



Red (80%)

Green (58%)

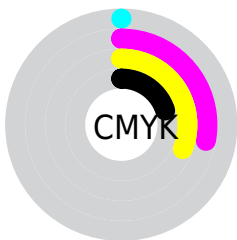
Blue (56%)



Red (80%)

Yellow (58%)

Blue (56%)

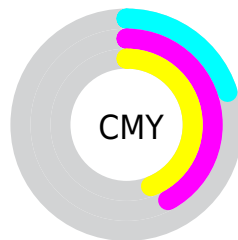


Cyan (0%)

Magenta (28%)

Yellow (31%)

Black (20%)



Cyan (20%)

Magenta (42%)


Yellow (44%)


# Brightness & Saturation Gradients

These gradients show how the XYZ color 40.6492, 36.1119, 30.4190 changes by changing the brightness by 10 percent. The first figure shows a shift by +10% for each color and the second figure -10%.


Similar to the brightness gradients but the following saturation gradients show a change of the XYZ color 40.6492, 36.1119, 30.4190 by changing the saturation by 10% instead.





 40.6492, 36.1119,  
30.4190


 40.6492, 36.1119,  
30.4190


339.9400,  
329.4494, 318.1205


 28.2315, 24.5206,  
19.9021


 75.4292, 69.2047,  
61.3930

 18.6416, 15.7203,  
12.1405


 98.5222, 91.4751,  
82.6872

 11.5141, 9.3264,  
6.7158


 125.9043,  
118.0740, 108.4108

 6.4836, 4.9547,  
3.2092

157.9410,  
149.3857, 138.9825

 3.1847, 2.2207,  
1.2024

194.9976,  
185.7947, 174.8208

 1.2522, 0.7313,  
0.0000

237.4393,

 0.1470, 0.0000,

227.6854, 216.3442

0.0000

285.6317,  
275.4422, 263.9713

0.0000, 0.0000,  
0.0000

40.6492, 36.1119,  
30.4190

40.6492, 36.1119,  
30.4190

36.5697, 30.1936,  
22.1512

45.4798, 43.0790,  
40.3344

33.2008, 25.2686,  
15.4396

51.0936, 51.1369,  
51.9778

30.5024, 21.2837,  
10.1873

57.5245, 60.3316,  
65.4268

28.4293, 18.1790,  
6.2856

64.8034, 70.7047,  
80.7537

26.9307, 15.8874,  
3.6104

72.9596, 82.2960,  
98.0268

■ 25.9476, 14.3324,  
2.0150

■ 78.9869, 91.7192,  
108.1483

■ 25.4190, 13.4633,  
1.2589

# Harmonies

## Analogous

The Analogous color harmony consists of three colors that are next to each other on the color wheel.



41.6518, 36.1119, 39.4965



40.6492, 36.1119, 30.4190



37.9264, 36.1119, 24.7040

# Triad

The Triadic color harmony groups three colors that are evenly spaced from another and form a triangle on the color wheel.



40.6492, 36.1119, 30.4190



28.7450, 36.1119, 30.1621



34.2617, 36.1119, 62.4247

# Complementary

The Complementary color scheme is a pair of colors which are on the opposite of each other on the color wheel.



40.6492, 36.1119, 30.4190



42.5975, 51.0037, 65.3573

# Split Complementary

Split-complementary colors differ from the complementary color scheme. The scheme consists of three colors, the original color and two neighbors of the complement color.



30.9559, 36.1119, 58.7946



40.6492, 36.1119, 30.4190



27.9091, 36.1119, 39.1435

# Square

The Square scheme is like the rectangle color scheme, but the four colors are evenly spaced on the color wheel.



40.6492, 36.1119, 30.4190



31.0556, 36.1119, 24.5748



28.6903, 36.1119, 49.8066



37.8125, 36.1119, 59.0257



# Rectangle

The Rectangle color scheme consists of four colors that form a rectangle on the color wheel.



40.6492, 36.1119, 30.4190



35.5907, 36.1119, 22.9908



28.6903, 36.1119, 49.8066



33.0863, 36.1119, 61.9778

# Sweetspot

The Sweet Spot groups the original color and five complimentary colors.



40.6502, 36.1136, 30.4197



85.3030, 86.0698, 88.4984



45.2462, 36.4839, 59.1480



17.9438, 17.9720, 18.2866



0.0000, 0.0000, 0.0000



20.3446, 21.4041, 23.3091



# Same Dimension

The Same Dimension uses a secret algorithm to generate beautiful new colors.



40.6502, 36.1136, 30.4197



61.9499, 52.4363, 40.4127



46.1296, 47.0725, 32.2462



11.2969, 11.3827, 11.6811



15.8558, 8.4446, 0.7943



0.8481, 0.4960, 0.0510



# Inverse Universe

The Inverse Universe completely reimagines the original color for something new.



42.5975, 51.0037, 65.3573



65.6357, 80.6772, 106.7206



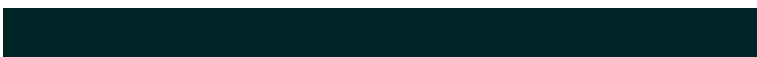
36.2239, 38.2566, 63.2328



11.4483, 12.5371, 14.3869



17.7589, 24.5418, 39.7573

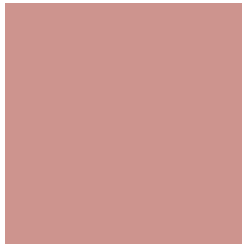


0.9434, 1.3205, 2.0601



# Previews

## White Background



This preview shows how the XYZ color 40.6492, 36.1119, 30.4190 looks on a white background.

## Color Contrast Check

Large Text (above 18pt) WCAG AA × Fail

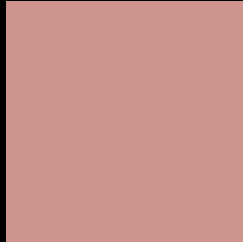
Any Text WCAG AA × Fail

Large Text (above 18pt) WCAG AAA × Fail

Any Text WCAG AAA × Fail



# Black Background



This preview shows how the XYZ color 40.6492, 36.1119, 30.4190 looks on a black background.

## Color Contrast Check

Large Text (above 18pt) WCAG AA ✓ Pass

Any Text WCAG AA ✓ Pass

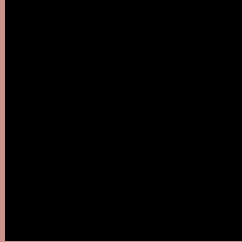
Large Text (above 18pt) WCAG AAA ✓ Pass

Any Text WCAG AAA ✓ Pass

If you want to check with other color combinations, try the [Color Contrast Checker](#).

**XYZ 40.6492, 36.1119, 30.4190**

## **Background**



This preview shows how black text looks on a background with the XYZ color 40.6492, 36.1119, 30.4190.



This preview shows how white text looks on a background with the XYZ color 40.6492, 36.1119,

30.4190.

# Color Blindness Simulation

Color vision deficiency is a very complex topic, and I could not describe the different causes any better than Wikipedia does, so if you want to learn more, you should check out their [article about color blindness](#).

## Dichromacy



### Original Color

40.6492, 36.1119, 30.4190

### Protanopia

34.4936, 36.3354, 33.6292

### Deuteranopia

36.8718, 36.1095, 29.8374



## Tritanopia

42.0968, 36.2575, 36.6779

# Trichromacy



## Original Color

40.6492, 36.1119, 30.4190

## Protanomaly

36.3013, 36.0130, 32.2321

## Deuteranomaly

38.1913, 36.0430, 30.1434

## Tritanomaly

41.5548, 36.2562, 34.5137

# Monochromacy



## Original Color

40.6492, 36.1119, 30.4190

## Achromatopsia

35.2861, 37.1238, 40.4278

## Achromatomaly

36.8180, 36.4377, 36.5452

# CSS Examples

## Text

The CSS property to change the color of the text to XYZ 40.6492, 36.1119, 30.4190 is called "color". The color property can be set on classes, ids or directly on the HTML element.

This example shows how text in the color `rgb(205, 148, 142)` looks like.

```
.text, #text, p{  
    color:rgb(205, 148, 142)  
}
```

If you want to add a text shadow in that color use the text-shadow property, you can generate a text shadow directly with our [CSS Text Shadow Generator](#).

Here you see how black text with a 4 pixel rgb(205, 148, 142) colored shadow looks like.

```
.shadow{ text-shadow: 4px 4px 2px rgb(205, 148, 142) }
```

## Border

The CSS property to change the border of an element to XYZ 40.6492, 36.1119, 30.4190 is called "border". The border property can be set on classes, ids or directly on the HTML element.

This example shows the color as border, it can be applied via the CSS property "border" or "border-color".

```
.border, #border, table{ border:4px solid rgb(205, 148, 142) }
```



If only the border color should be changed use the property `border-color`.

```
.border{ border-color:rgb(205, 148, 142) }
```

If you want to add a box shadow in that color use:

Here you see how a box with a 4 pixel `rgb(205, 148, 142)` colored shadow looks like.

```
.boxshadow{ -moz-box-shadow:4px 4px 4px  
4px rgb(205, 148, 142); -webkit-box-  
shadow:4px 4px 4px 4px rgb(205, 148, 142);  
box-shadow:4px 4px 4px 4px rgb(205, 148,  
142) }
```

# Background

The CSS property to change the background color of an element to XYZ 40.6492, 36.1119, 30.4190 is called "background". The background property can be set on classes, ids or directly on the HTML element.

```
.background, #background, body{  
background: rgb(205, 148, 142) }
```

If only the background color should be changed can be used:

```
.background{ background-color: rgb(205,  
148, 142) }
```

This example shows the color as background, it is applied via the CSS property "background".

To optimize and compress your CSS code, you can use our [online CSS compressor and optimizer](#) based on csstidy. If you want to create a linear or radial gradient as background or border, check our [CSS Gradient Generator](#).

Hey! You found this booklet interesting? Support Converting Colors with the new Membership Option!

The pro membership hides all ads, plus gives you double the colors in the color bucket, and more awesome pro features!

**[Learn more, Memberships starting at \\$2.50/m!](#)**

**Follow me  
on Twitter!**

@ConvertingColor