

Converting Colors

XYZ(40.7041, 39.9486, 39.8428)

Have a look what the booklet for
XYZ(40.7041, 39.9486, 39.8428)
contains.

XYZ(40.7833, 39.9784, 39.7495)	3
<i>Conversions</i>	4
<i>Details</i>	6
<i>Harmonies</i>	12
<i>Previews</i>	24
<i>Color Blindness Simulation</i>	28
<i>CSS Examples</i>	31

Color

**XYZ(40.7833, 39.9784,
39.7495)**

Conversions

Conversions Part 1

Format	Color
Hex	BDA4A2
RGB	189, 164, 162
RGB Percent	74%, 64%, 64%
CMY	0.2588, 0.3568, 0.3647
CMYK	0.00, 0.13, 0.14, 0.26
HSL	4°, 17%, 69%
HSV	4°, 14%, 74%
XYZ	40.7833, 39.9784, 39.7495
YIQ	171.2470, 15.5420, 4.6780

Conversions

Conversions Part 2

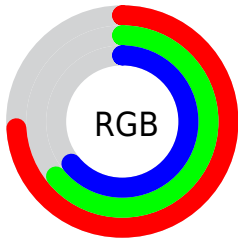
Format	Color
RYB	189, 164, 162
Decimal	12428450
CIELab	69.45, 8.79, 4.39
CIELCh	69, 9.825, 26.570
Yxy	39.9784, 0.3384, 0.3317
Android (android.graphics.Color)	4290618530 (0xFFBDA4A2)
YUV	171.2470, -4.5588, 15.5694
Hunter-Lab	63.2285, 4.4853, 6.9864

Details

The XYZ color **40.7833, 39.9784, 39.7495** is a light color, and the websafe version is hex **CC9999**. A complement of this color would be **41.8556, 46.8950, 54.9900**, and the grayscale version is **38.8505, 40.8737, 44.5115**.

A 20% lighter version of the original color is **75.5121, 75.0853, 76.1586**, and **18.6003, 17.8650, 17.2198** is the 20% darker color. If you saturate the color by 10%, you get **36.3092, 33.5196, 30.5830**, and if you desaturate by 10%, it is **45.9430, 47.4034, 50.3913**.

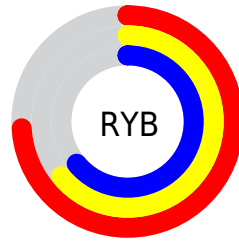
Distribution



Red (74%)

Green (64%)

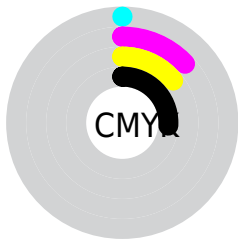
Blue (64%)



Red (74%)

Yellow (64%)

Blue (64%)

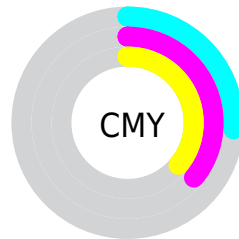


Cyan (0%)

Magenta (13%)

Yellow (14%)

Black (26%)



Cyan (26%)

Magenta (36%)

Yellow (36%)

Brightness & Saturation Gradients

These gradients show how the XYZ color 40.7833, 39.9784, 39.7495 changes by changing the brightness by 10 percent. The first figure shows a shift by +10% for each color and the second figure -10%.

Similar to the brightness gradients but the following saturation gradients show a change of the XYZ color 40.7833, 39.9784, 39.7495 by changing the saturation by 10% instead.

■ 40.7833, 39.9784,
39.7495

■ 40.7833, 39.9784,
39.7495

340.4922,
346.0325, 360.5873

■ 28.3367, 27.5217,
27.0310

■ 75.6316, 75.1306,
76.0148

■ 18.7214, 17.9654,
17.3639

■ 98.7641, 98.5949,
100.3987

■ 11.5719, 10.9252,
10.3296

126.1892,
126.4972, 129.5081

■ 6.5230, 6.0165,
5.5096

158.2723,
159.2219, 163.7616

■ 3.2093, 2.8551,
2.4853

195.3788,
197.1534, 203.5778

■ 1.2654, 1.0566,
0.8324

237.8741,

■ 0.1571, 0.0000,

240.6761, 249.3751

0.0000

286.1234,
290.1743, 301.5720

0.0000, 0.0000,
0.0000

40.7833, 39.9784,
39.7495

40.7833, 39.9784,
39.7495

36.3092, 33.5196,
30.5830

45.9430, 47.4034,
50.3913

32.4888, 27.9823,
22.8243

51.8119, 55.8265,
62.5667

29.2922, 23.3260,
16.4044

58.4168, 65.2846,
76.3342

26.6863, 19.5053,
11.2474

65.7818, 75.8112,
91.7482

24.6348, 16.4706,
7.2701

73.6876, 87.3413,
107.5825

■ 23.0974, 14.1672,
4.3789

■ 74.7964, 89.5589,
107.9521

■ 22.0281, 12.5333,
2.4665

■ 21.3728, 11.4969,
1.4032

■ 21.1438, 11.1336,
1.0346

Harmonies

Analogous

The Analogous color harmony consists of three colors that are next to each other on the color wheel.



41.1151, 39.9784, 44.0528



40.7833, 39.9784, 39.7495



39.6982, 39.9784, 36.6589

Triad

The Triadic color harmony groups three colors that are evenly spaced from another and form a triangle on the color wheel.



40.7833, 39.9784, 39.7495



35.5167, 39.9784, 38.9061



37.8166, 39.9784, 52.8141

Complementary

The Complementary color scheme is a pair of colors which are on the opposite of each other on the color wheel.



40.7833, 39.9784, 39.7495



41.8556, 46.8950, 54.9900

Split Complementary

Split-complementary colors differ from the complementary color scheme. The scheme consists of three colors, the original color and two neighbors of the complement color.



36.3475, 39.9784, 51.2094



40.7833, 39.9784, 39.7495



35.0431, 39.9784, 43.0107

Square

The Square scheme is like the rectangle color scheme, but the four colors are evenly spaced on the color wheel.



40.7833, 39.9784, 39.7495



36.6543, 39.9784, 36.1962



35.3430, 39.9784, 47.5422



39.3747, 39.9784, 51.7923

Rectangle

The Rectangle color scheme consists of four colors that form a rectangle on the color wheel.



40.7833, 39.9784, 39.7495



38.7089, 39.9784, 35.5968



35.3430, 39.9784, 47.5422



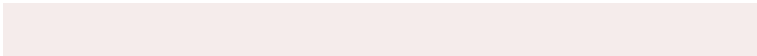
37.2964, 39.9784, 52.5613

Sweetspot

The Sweet Spot groups the original color and five complimentary colors.



40.7844, 39.9802, 39.7503



82.5021, 85.2134, 90.7028



42.8981, 40.2564, 52.6357



17.5819, 18.0950, 19.1745



90.7827, 95.5105, 104.0109



18.6292, 19.5994, 21.3438

Same Dimension

The Same Dimension uses a secret algorithm to generate beautiful new colors.



40.7844, 39.9802, 39.7503



70.5248, 67.9709, 66.0176



43.2897, 44.9908, 40.5855



9.5855, 9.6470, 9.9335



14.2485, 7.5357, 0.7036



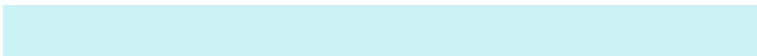
0.5777, 0.3344, 0.0341

Inverse Universe

The Inverse Universe completely reimagines the original color for something new.



41.8556, 46.8950, 54.9900



72.7961, 82.6355, 98.3397



39.1642, 41.5123, 54.0929



9.7464, 10.6850, 12.2209



16.5158, 23.1434, 35.9895



0.6652, 0.9430, 1.4158

Previews

White Background



This preview shows how the XYZ color 40.7833, 39.9784, 39.7495 looks on a white background.

Color Contrast Check

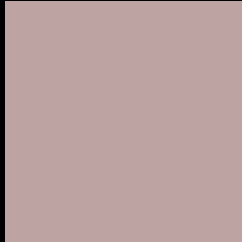
Large Text (above 18pt) WCAG AA × Fail

Any Text WCAG AA × Fail

Large Text (above 18pt) WCAG AAA × Fail

Any Text WCAG AAA × Fail

Black Background



This preview shows how the XYZ color 40.7833, 39.9784, 39.7495 looks on a black background.

Color Contrast Check

Large Text (above 18pt) WCAG AA ✓ Pass

Any Text WCAG AA ✓ Pass

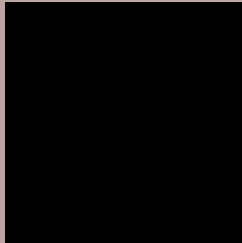
Large Text (above 18pt) WCAG AAA ✓ Pass

Any Text WCAG AAA ✓ Pass

If you want to check with other color combinations, try the [Color Contrast Checker](#).

XYZ 40.7833, 39.9784, 39.7495

Background



This preview shows how black text looks on a background with the XYZ color 40.7833, 39.9784, 39.7495.



This preview shows how white text looks on a background with the XYZ color 40.7833, 39.9784,

Color Blindness Simulation

Color vision deficiency is a very complex topic, and I could not describe the different causes any better than Wikipedia does, so if you want to learn more, you should check out their [article about color blindness](#).

Dichromacy



Original Color

40.7833, 39.9784, 39.7495

Protanopia

38.4351, 40.0912, 41.3099

Deuteranopia

40.7833, 39.9784, 39.7495



Tritanopia

42.1441, 40.0122, 46.0593

Trichromacy



Original Color

40.7833, 39.9784, 39.7495

Protanomaly

39.1100, 39.9015, 40.7624

Deuteranomaly

40.7833, 39.9784, 39.7495

Tritanomaly

41.5881, 40.0438, 43.5675

Monochromacy



Original Color

40.7833, 39.9784, 39.7495

Achromatopsia

38.7082, 40.7240, 44.3485

Achromatomaly

39.4306, 40.2974, 42.7457

CSS Examples

Text

The CSS property to change the color of the text to XYZ 40.7833, 39.9784, 39.7495 is called "color". The color property can be set on classes, ids or directly on the HTML element.

This example shows how text in the color `rgb(189, 164, 162)` looks like.

```
.text, #text, p{  
    color:rgb(189, 164, 162)  
}
```

If you want to add a text shadow in that color use the text-shadow property, you can generate a text shadow directly with our [CSS Text Shadow Generator](#).

Here you see how black text with a 4 pixel rgb(189, 164, 162) colored shadow looks like.

```
.shadow{ text-shadow: 4px 4px 2px rgb(189, 164, 162) }
```

Border

The CSS property to change the border of an element to XYZ 40.7833, 39.9784, 39.7495 is called "border". The border property can be set on classes, ids or directly on the HTML element.

This example shows the color as border, it can be applied via the CSS property "border" or "border-color".

```
.border, #border, table{ border:4px solid rgb(189, 164, 162) }
```


If only the border color should be changed use the property `border-color`.

```
.border{ border-color:rgb(189, 164, 162) }
```

If you want to add a box shadow in that color use:

Here you see how a box with a 4 pixel `rgb(189, 164, 162)` colored shadow looks like.

```
.boxshadow{ -moz-box-shadow:4px 4px 4px  
4px rgb(189, 164, 162); -webkit-box-  
shadow:4px 4px 4px 4px rgb(189, 164, 162);  
box-shadow:4px 4px 4px 4px rgb(189, 164,  
162) }
```

Background

The CSS property to change the background color of an element to XYZ 40.7833, 39.9784, 39.7495 is called "background". The background property can be set on classes, ids or directly on the HTML element.

```
.background, #background, body{  
background: rgb(189, 164, 162) }
```

If only the background color should be changed can be used:

```
.background{ background-color: rgb(189,  
164, 162) }
```

This example shows the color as background, it is applied via the CSS property "background".

To optimize and compress your CSS code, you can use our [online CSS compressor and optimizer](#) based on csstidy. If you want to create a linear or radial gradient as background or border, check our [CSS Gradient Generator](#).

Hey! You found this booklet interesting? Support Converting Colors with the new Membership Option!

The pro membership hides all ads, plus gives you double the colors in the color bucket, and more awesome pro features!

[Learn more, Memberships starting at \\$2.50/m!](#)

**Follow me
on Twitter!**

@ConvertingColor